

TECHNICAL MANUAL

ORGANIZATIONAL AND DIRECT SUPPORT MAINTENANCE  
REPAIR PARTS AND SPECIAL TOOLS LIST  
FOR

RADIO CONTROL SET AN/GRA-39  
(NSN 5820-00-889-3860),  
AN/GRA-39A (NSN 5820-00-082-3998),  
AN/GRA-39B (NSN 5820-00-949-9909),  
AND  
AN/GRA-39C (NSN 5820-01-196-0204)

Distribution authorized to the Department of Defense and DOD contractors only for official use or for administration or operational purposes. This determination was made on 15 March 1988. Other requests for this document will be referred to Commander, US Army Communications-Electronics Command and Fort Monmouth, ATTN: AMSEL-ME-P, Fort Monmouth, NJ 07703-5000.

DESTRUCTION NOTICE—Destroy by any method that will prevent disclosure of contents or reconstruction of the document.



TECHNICAL MANUAL }  
 NO. 11-5820-477-23P }

HEADQUARTERS  
 DEPARTMENT OF THE ARMY  
 WASHINGTON, DC, 1 July 1988

ORGANIZATIONAL AND DIRECT SUPPORT MAINTENANCE  
 REPAIR PARTS AND SPECIAL TOOLS LIST  
 FOR

RADIO CONTROL SET AN/GRA-39 (NSN 5820-00-889-3860),  
 AN/GRA-39A (NSN 5820-00-082-3398),  
 AN/GRA-39B (NSN 5820-00-949-9909),  
 AND  
 AN/GRA-39C (NSN 5820-01-1 96-0204)

Current as of 1 April 1988

**REPORTING ERRORS AND RECOMMENDING IMPROVEMENTS**

You can help improve this manual. If you find any mistakes or if you know of a way to improve the procedures, please let us know. Mail your letter, DA Form 2028 (Recommended Changes to Publications and Blank Forms), or DA Form 2028-2 located in back of this manual direct to Commander, US Army Communications-Electronics Command and Fort Monmouth, ATTN: AMSEL-ME-MP, Fort Monmouth, New Jersey 07703-5000. In either case, a reply will be furnished direct to you.

Table of Contents

	Page	Illus Figure
SECTION I. Introduction .....	1	
II. Repair Parts List .....	1-1	
GROUP 00 Radio Control Set Group AN/GRA-39, AN/GRA-39A, AN/GRA-39B, and AN/GRA-39C .....	1-1	1
01 Radio Control Set C-2328/GRA-39 .....	2-1	2
Radio Control Set C-2328A/GRA-39, C-2328B/GRA-39, and C-2328C/GRA-39 .....	3-1	3
0101 Chassis Assembly .....	4-1	4
0102 Panel Assembly (AN/GRA-39) .....	5-1	5
0102 Panel Assembly (AN/GRA-39A, B, and C) .....	6-1	6
02 Radio Control Set C-2329/GRA-39.. ..	7-1	7
Radio Control Set C-2329A/GRA-39, C-2329B/GRA-39, and C-2329C/GRA-39 .....	8-1	8
0201 Chassis Assembly .....	9-1	9
0202 Panel Assembly (AN/GRA-39) .....	10-1	10
0202 Panel Assembly (AN/GRA-39A, B, and C) .....	11-1	11
SECTION III. Special Tools List (Not applicable)		
IV. Cross-Reference Indexes		
National Stock Number Index.....	I-1	
Part Number Index .....	I-4	
Figure and Item Number Index.....	I-10	

\*This manual supersedes TM 11-5820-477-20P, 15 August 1978 and TM 11-5820-477-34P, 29 August 1978.



# SECTION I

## INTRODUCTION

---

### 1. Scope

This manual lists and authorizes spares and repair parts; special tools; special test, measurement, and diagnostic equipment (TMDE); and other special support equipment required for performance of organizational and direct support maintenance of the AN/GRA-39, A, B, and C. It authorizes the requisitioning, issue, and disposition of spares, repair parts and special tools as indicated by the source, maintenance and recoverability (SMR) codes.

### 2. General

This Repair Parts and Special Tools List is divided into the following sections:

a. *Section II. Repair Parts List.* A list of spares and repair parts authorized by this RPSTL for use in the performance of maintenance. The list also includes parts which must be removed for replacement of the authorized parts. Parts lists are composed of functional groups in ascending numeric sequence, with the parts in each group listed in ascending item number sequence. Figure numbers are listed directly beneath the group header.

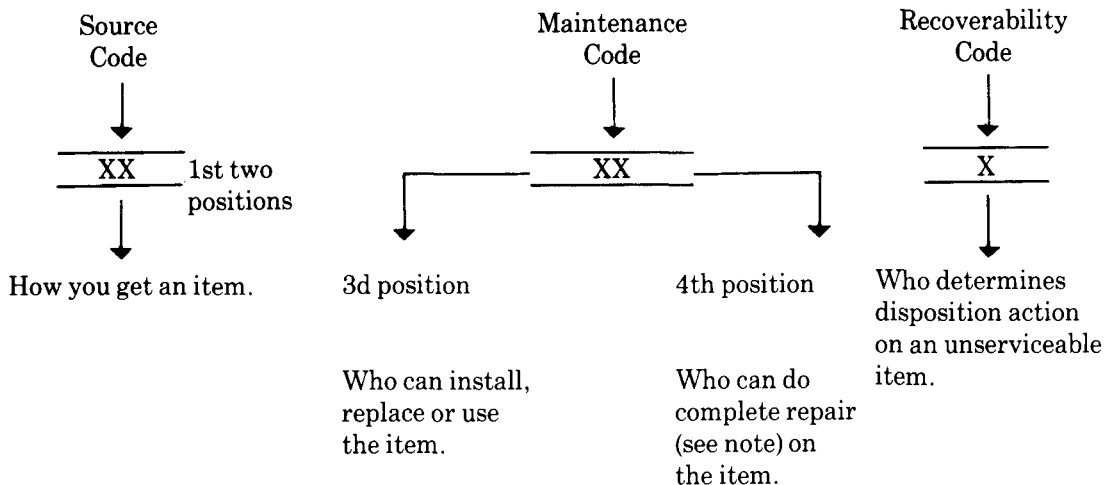
b. *Section III. Special Tools List.* Not applicable.

c. *Section IV. Cross Reference Indexes.* A list, in National item identification number (NIIN) sequence, of all National stock numbered items appearing in the listing, followed by a list in alphameric sequence of all part numbers appearing in the listings. National stock numbers and part numbers are cross-referenced to each illustration figure and item number appearance. The figure number and item number index lists figure and item numbers in numeric sequence and cross-references National stock number, Federal Supply Code for Manufacturer and part numbers.

### 3. Explanation of Columns (Section II and III)

a. *Item No. (Column (1)).* Indicates the number used to identify items called out in the illustration.

b. *SMR Code (Column (2)).* The source, maintenance, and recoverability (SMR) code is a five-position code containing supply/requisitioning information, maintenance category authorization criteria, and disposition instruction, as shown in the following breakout:



#### NOTE

Complete repair: Maintenance capacity, capability, and authority to perform all corrective maintenance tasks of the "Repair" function in a use/user environment in order to restore serviceability to a failed item.

(1) *Source code.* The source code tells you how to get an item needed for maintenance, repair, or overhaul of an end item/equipment. Explanations of source codes follows:

<i>Code</i>	<i>Explanation</i>
<div style="border: 1px solid black; padding: 5px; display: inline-block;">                     PA PB PC PD PE PF PG                 </div>	<p>Stocked items; use the applicable NSN to request/requisition items with these source codes. They are authorized to the category indicated by the code entered in the third position of the SMR code.</p>

**NOTE**

Items coded PC are subject to deterioration.

<div style="border: 1px solid black; padding: 5px; display: inline-block;">                     KD KF KB                 </div>	<p>Items with these codes are not to be requested/requisitioned individually. They are part of a kit which is authorized to the maintenance category indicated in the third position of the SMR code. The complete kit must be requisitioned and applied.</p>
---	---

<div style="border: 1px solid black; padding: 5px; display: inline-block;">                     MO— Made at org/AVUM category MF— Made at DS/AVIM category MH— Made at GS category ML— Made at Special- ized Repair Activity (SRA) MD— Made at Depot                 </div>	<p>Items with these codes are not to be requested/requisitioned individually. They must be made from bulk material which is identified by the part number in the description and usable on code (UOC) column and listed in the Bulk Material group of the repair parts list. If the item is authorized to you by the third position code of the SMR code, but the source code indicates it is made at a higher category, order the item from the higher category of maintenance.</p>
---	--

<div style="border: 1px solid black; padding: 5px; display: inline-block;">                     AO— Assembled by org/AVUM category AF— Assembled by DS/AVIM category AH— Assembled by GS category AL— Assembled by SRA AD— Assembled by Depot                 </div>	<p>Items with these codes are not to be requested/requisitioned individually. The parts that make up the assembled item must be requisitioned or fabricated and assembled at the category of maintenance indicated by the source code. If the third position code of the SMR code authorizes you to replace the item, but the source code indicates the item is assembled at a higher category,</p>
--	---

XA—Do not requisition an “XA” coded item. Order its next higher assembly.

XB—If an “XB” item is not available from salvage, order it using the FSCM and part number given.

XC—Installation drawing, diagram, instruction sheet, field service drawing, that is identified by manufacturers part number.

XD—Item is not stocked. Order an “XD” coded item through normal supply channels using the FSCM and part number given, if no NSN is available.

**NOTE**

Cannibalization or controlled exchange, when authorized, may be used as a source of supply for items with the above source codes, except for those source coded "XA" or those aircraft support items restricted by requirements of AR 750-1.

(2) *Maintenance code.* Maintenance codes tell you the category of maintenance authorized to USE and REPAIR support items. The maintenance codes are entered in the third and fourth positions of the SMR code as follows:

(a) The maintenance code entered in the third position tells you the lowest maintenance category authorized to remove, replace, and use an item. The maintenance code entered in the third position will indicate authorization to one of the following categories of maintenance.

<i>Code</i>	<i>Application/Explanation</i>
-------------	--------------------------------

C—Crew or operator maintenance done within organizational or aviation maintenance.

O—Organizational or aviation unit category can remove, replace, and use the item.

F—Direct support or aviation intermediate category can remove, replace, and use the item.

H—General support category can remove, replace, and use the item.

L—Specialized repair activity can remove, replace, and use the item.

D—Depot category can remove, replace, and use the item.

(b) The maintenance code entered in the fourth position tells whether or not the item is to be repaired and identifies the lowest maintenance category with the capability to do complete repair (i.e., perform all authorized repair functions). This position will contain one of the following maintenance codes.

**NOTE**

Some limited repair may be done on the item at a lower category of maintenance, if authorized by the Maintenance Allocation Chart (MAC) and SMR codes.

<i>Code</i>	<i>Application/Explanation</i>
-------------	--------------------------------

O—Organizational or aviation unit is the lowest category that can do complete repair of the item.

F—Direct support or aviation intermediate is the lowest category that can do complete repair of the item.

H—General support is the lowest category that can do complete repair of the item.

L—Specialized repair activity (designate the specialized repair activity) is the lowest category that can do complete repair of the item.

D—Depot is the lowest category that can do complete repair of the item.

Z— Nonreparable. No repair is authorized.

B—No repair is authorized. (No parts or special tools are authorized for the maintenance of a "B" coded item). However, the item may be reconditioned by adjusting, lubricating, etc., at the user category.

(3) *Recoverability code.* Recoverability codes are assigned to items to indicate the disposition action on unserviceable items. The recoverability code is entered in the fifth position of the SMR Code as follows:

<i>Recoverability codes</i>	<i>Application/Explanation</i>
-----------------------------	--------------------------------

Z—Nonreparable Item. When unserviceable, condemn and dispose of the item at the category of maintenance shown in the third position of SMR Code.

O—Reparable item. When uneconomically repairable, condemn and dispose of the item at organizational or aviation unit category.

F—Reparable item. When uneconomically repairable, condemn and dispose of the item at direct support or aviation intermediate category.

H—Reparable item. When uneconomically repairable, condemn and dispose of the item at general support category.

D—Reparable item. When beyond lower category repair capability, return to depot. Condemnation and disposal of item not authorized below depot category.

Recoverability  
codes

Application/Explanation

L—Reparable item. Condemnation and disposal not authorized below specialized repair activity (SRA).  
A—Item requires special handling or condemnation procedures because of specific reasons (e.g., precious metal content, high dollar value, critical material, or hazardous material). Refer to appropriate manuals/directives for specific instructions.

c. *FSCM (Column (3))*. The Federal Supply Code for Manufacturer (FSCM) is a 5-digit numeric code which is used to identify the manufacturer, distributor, or Government agency, etc., that supplies the item.

d. *Part Number (Column (4))*. Indicates the primary number used by the manufacturer (individual, company, firm, corporation, or Government activity), which controls the design and characteristics of the item by means of its engineering drawings, specifications, standards, and inspection requirements to identify an item or range of items.

#### NOTE

When you use a NSN to requisition an item, the item you receive may have a different part number from the part ordered.

e. *Description and Usable on Code (UOC) (Column (5))*. This column includes the following information.

(1) The Federal item name and, when required, a minimum description to identify the item.

(2) Usable on code, when applicable (para 5).

(3) The statement "END OF FIGURE" appears just below the last item description in Column (5) for a given figure in both section II and section III.

f. *Qty (Column (6))*. Indicates the quantity of the item used in the breakout shown on the illustration figure, which is prepared for a functional group, subfunctional group, or an assembly. A "V" appearing in this column in lieu of a quantity indicates that the quantity is variable and the quantity may vary from application to application.

#### 4. Explanation of Columns (Section IV)

a. *National Stock Number (NSN) Index*.

(1) *Stock number column*. This column lists the NSN by National item identification number (NIIN) sequence. The NIIN consists of the last nine digits of the NSN. When using this column to locate an item, ignore the first four digits of the NSN. When requisitioning items use the complete NSN (13 digits).

(2) *Fig. column*. This column lists the number of the figure where the item is identified/located. The illustrations are in numerical sequence in sections II and III.

(3) *Item column*. The item number identifies the item associated with the figure listed in the adjacent Fig. column. This item is also identified by the NSN listed on the same line.

b. *Part Number Index*. Part numbers in this index are listed by part number in ascending alphameric sequence.

(1) *FSCM column*. This column lists the Federal supply code for manufacturer (FSCM).

(2) *Part number column*. This column indicates the part number assigned to the item.

(3) *Stock number column*. This column lists the National stock number for the associated part number and manufacturer identified in the part number and FSCM columns to the left.

(4) *Fig. column*. This column lists the number of the figure where the item is identified/located in sections II and III.

(5) *Item column*. The item number is that number assigned to the item as it appears in the figure referenced in the adjacent figure number column.

c. *Figure and Item Number Index*.

(1) *Fig. column*. This column lists the number of the figure where the item is identified/located in sections II and III.

(2) *Item column*. The item number is that number assigned to the item as it appears in the figure referenced in the adjacent figure number column,

(3) *Stock number column*. This column lists the National stock number for the item.

(4) *FSCM column*. The Federal supply code for manufacturer (FSCM) is a 5-digit numeric code used to identify the manufacturer, distributor, or Government agency, etc., that supplies the item.



(5) *Part number column.* Indicates the primary number used by the manufacturer (individual, firm, corporation, or Government activity), which controls the design and characteristics of the item by means of its engineering drawings, specifications, standards, and inspection requirements to identify an item or range of items.

## 5. Special Information

*a. Usable on Code.* The usable on code appears in the lower left corner of the description column heading. Usable on codes are shown as "UOC: " in the description column (justified left) on the first line applicable item description nomenclature. Uncoded items are applicable to all models. Identification of the usable on codes used in this RPSTL are:

<i>Code</i>	<i>Used on</i>
3KP	AN/GRA-39
3KM	AN/GRA-39A
AVZ	AN/GRA-39B
HDQ	AN/GRA-39C

*b. Associated Publications.* The publications listed below pertain to the AN/GRA-39, AN/GRA-39A, AN/GRA-39B and AN/GRA-39C and their components:

TM 11-5820-477-12, Radio Set Control Groups AN/GRA-39, 39A, B and C

TM 11-5820-477-35, Radio Set Control Groups AN/GRA-39, 39A, B and C

*c. National Stock Numbers.* National stock numbers (NSN's) that are missing from P source coded items have been applied for and will be added to this TM by future change/revision when they are entered in the Army Master Data File (AMDF). Until the NSN's are established and published, submit exception requisitions to: Commander, US Army Communications-Electronics Command and Fort Monmouth, ATTN: AMSEL-MM, Fort Monmouth, NJ 07703-5000 for the part required to support your equipment.

## 6. How to Locate Repair Parts

*a. When National stock number or part number is not known.*

(1) *First.* Using the table of contents, determine the assembly group or subassembly group to which the item belongs. This is necessary since figures are prepared for assembly groups and subassembly groups, and listings are divided into the same groups.

(2) *Second.* Find the figure covering the assembly group or subassembly group to which the item belongs.

(3) *Third.* Identify the item on the figure and note the item number.

(4) *Fourth.* Refer to the Repair Parts List for the figure to find the part number for the item number noted on the figure.

(5) *Fifth.* Refer to the Part Number Index to find the NSN, if assigned.

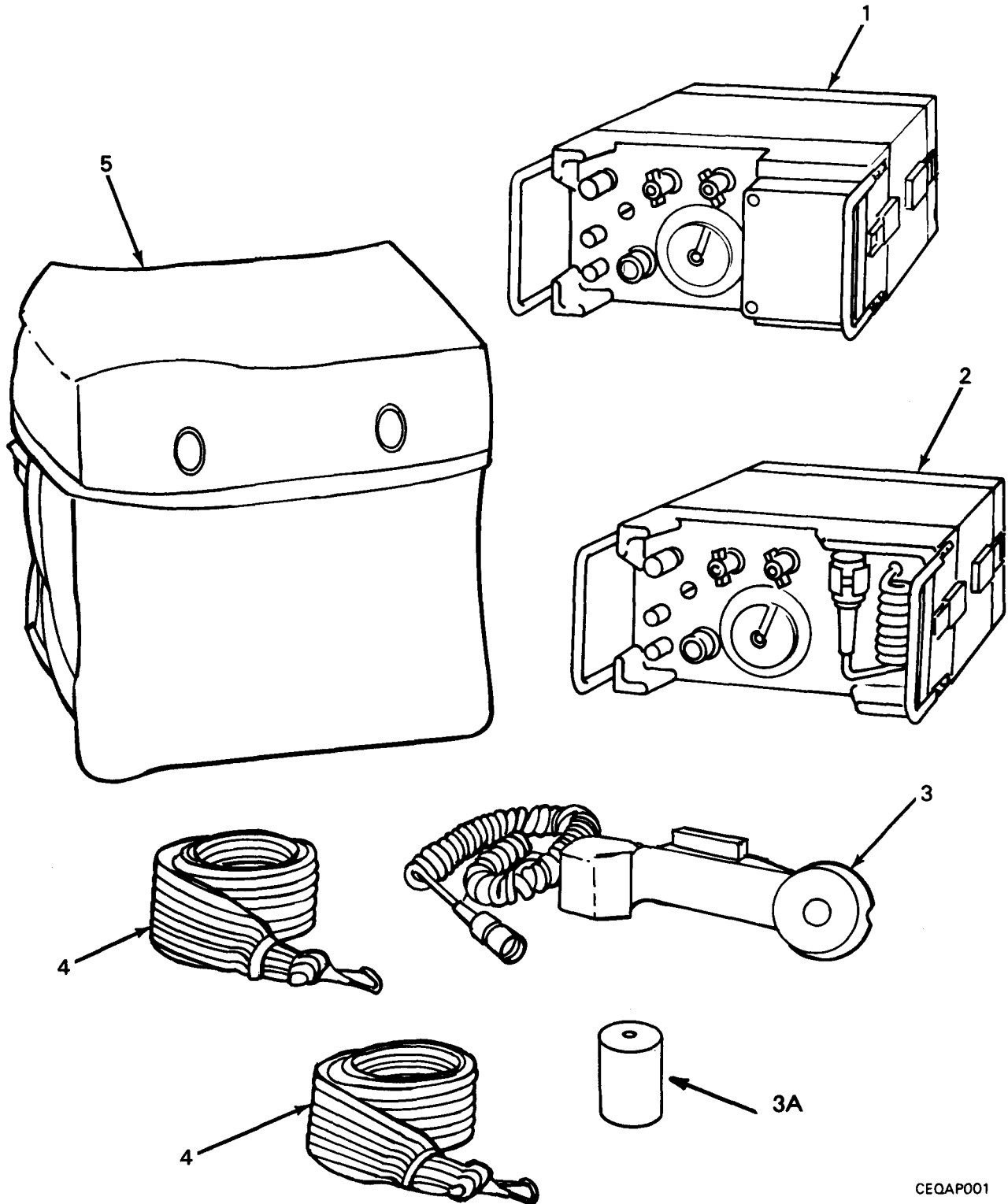
*b. When National stock number or part number is known.*

(1) *First.* Using the index of National stock numbers and part numbers, find the pertinent National stock number or part number. The NSN index is in National item identification number (NIIN) sequence (para 4a(1)). The part numbers in the part number index are listed in ascending alphameric sequence (para 4b). Both indexes cross-reference you to the illustration figure and item number of the item you are looking for.

(2) *Second.* After finding the figure and item number, verify that the item is the one you're looking for, then locate the item number in the repair parts list for the figure.

## 7. Abbreviations

Not applicable.



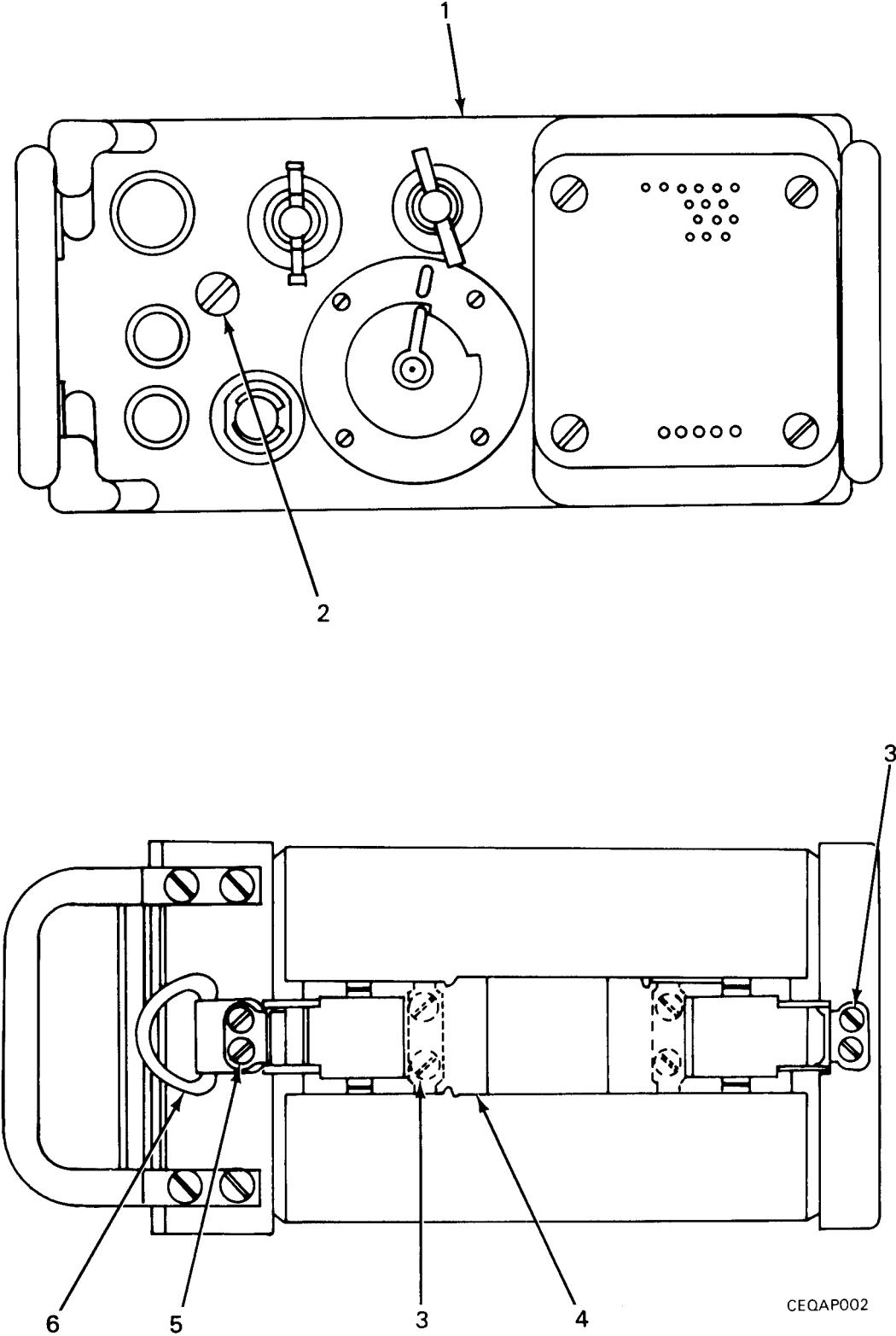
CEQAP001

Figure 1. Radio Control Set Group AN/GRA-39, AN/GRA-39A, AN/GRA-39B, and AN/GRA-39C

(1) ITEM NO	(2) SMR CODE	(3) FSCM	(4) PART NUMBER	(5) DESCRIPTION AND USABLE ON CODE (UOC)	(6) QTY
GROUP 00 RADIO CONTROL SET GROUP AN/ GRA-39, AN/GRA-39 B, AN/GRA-39C					
FIGURE 1					
1	PAOFF	80058	C-2328/GRA-39	CONTROL, RADIO SET (SEE FIGURE 2 FOR BREAKDOWN) UOC: 3KP	1
1	PAOFF	80058	C-2328A/GRA-39	CONTROL, RADIO SET (SEE FIGURE 3 FOR BREAKDOWN) UOC: 3KM	1
1	PAOFF	80058	C-2328B/GRA-39	CONTROL, RADIO SET (SEE FIGURE 3 FOR BREAKDOWN) UOC: AVZ	1
1	PAOFF	80058	C-2328C/GRA-39	CONTROL, RADIO SET (SEE FIGURE 3 FOR BREAKDOWN) UOC: HDQ	1
2	PAOFF	80058	C-2329/GRA-39	CONTROL, RADIO SET (SEE FIGURE 7 FOR BREAKDOWN) UOC: 3KP	1
2	PAOFF	80058	C-2329A/GRA-39	CONTROL, RADIO SET (SEE FIGURE 8 FOR BREAKDOWN) UOC: 3KM	1
2	PAOFF	80058	C-2329B/GRA-39	CONTROL, RADIO SET (SEE FIGURE 8 FOR BREAKDOWN) UOC: AVZ	1
2	PAOFF	80058	C-2329C/GRA-39	CONTROL, RADIO SET (SEE FIGURE 8 FOR BREAKDOWN) UOC: HDQ	1
3	PAFZZ	80058	H-250A/U	HANDSET UOC: 3KP	1
3	PAOZZ	80058	H-250A/U	HANDSET UOC: 3KM	1
3	PAOZZ	80058	H-250A/U	HANDSET UOC: AVZ, HDQ	1
3A	PCOZZ	80058	BA3030/U	BATTERY, NONCHARGE	12
4	PAFZZ	80063	SM-C-456309	STRAP, WEBBING UOC: 3KP	2
4	PAFZZ	80063	SM-C-456309	STRAP, WEBBING UOC: 3KM	2
4	PAFZZ	80063	SM-C-456309	STRAP, WEBBING UOC: AVZ, HDQ	2
5	PAOZZ	80058	CW-598/GRA-39	CASE, RADIO SET CONT	1

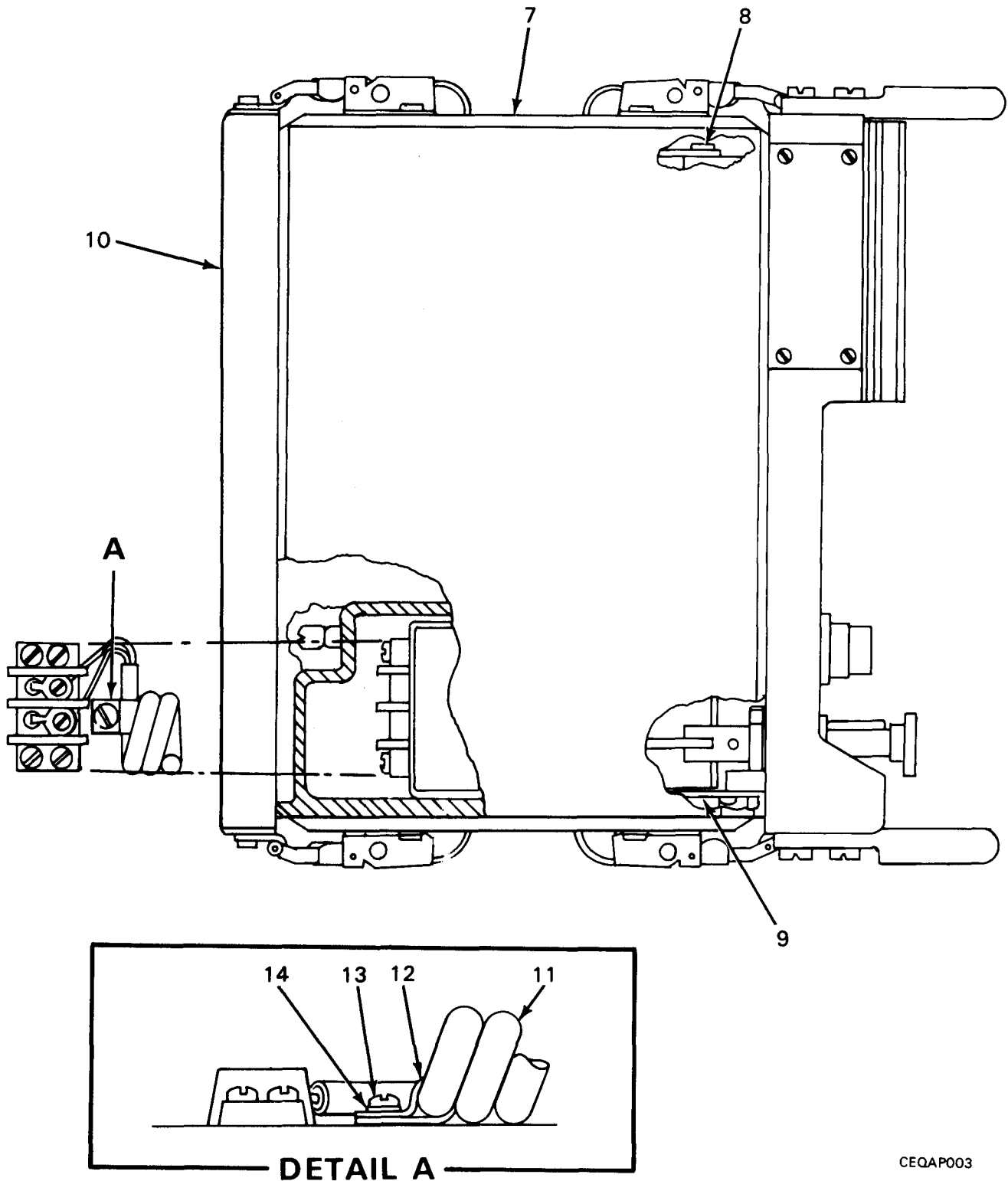
END OF FIGURE





CEQAP002

Figure 2. Radio Control Set C-2328/GRA-39 (Sheet 1 of 2)



CEQAP003

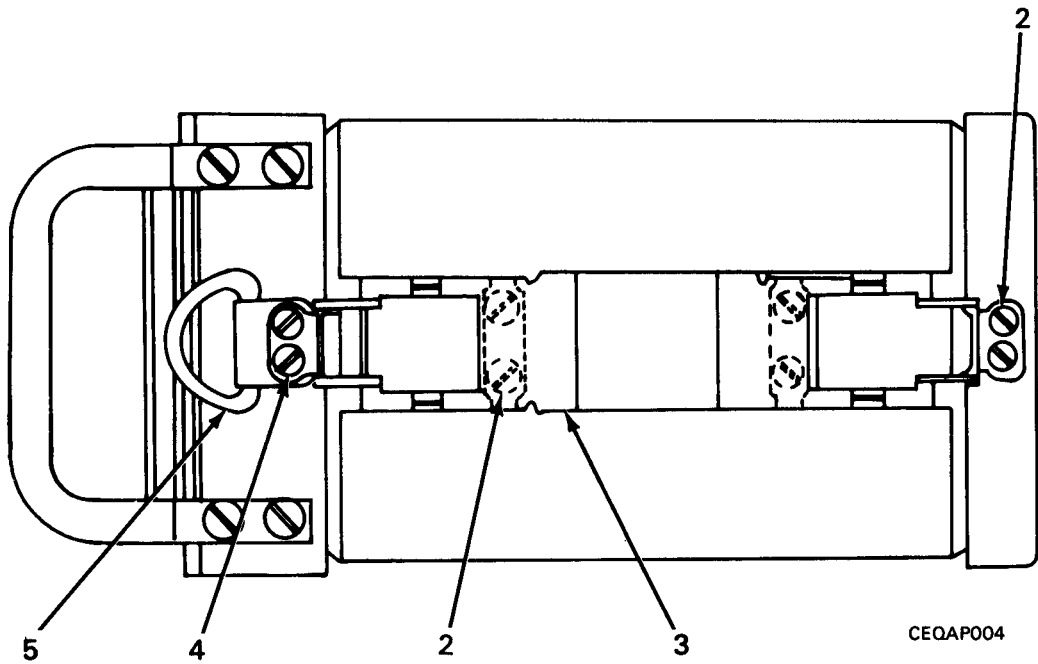
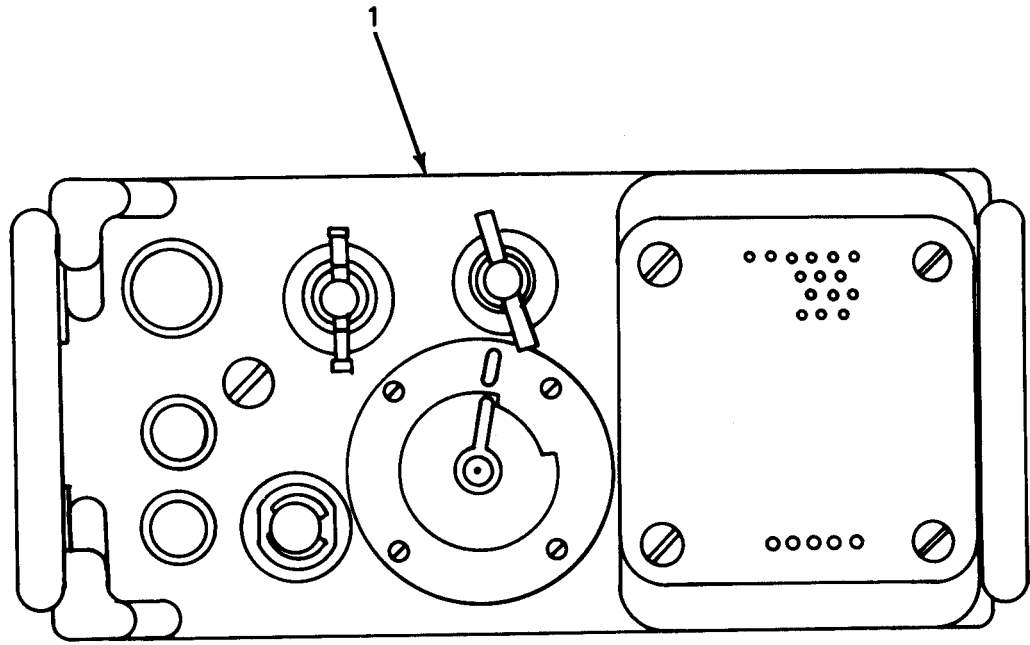
Figure 2. Radio Control Set C-2328/GRA-39 (Sheet 2 of 2)

(1) ITEM NO	(2) SMR CODE	(3) FSCM	(4) PART NUMBER	(5) DESCRIPTION AND USABLE ON CODE (UOC)	(6) QTY
				GROUP 01 RADIO CONTROL SET C-2328/GR A-39	
				FIGURE 2	
1	XBFFF	80063	SM-D-456244	PANEL ASSEMBLY (SEE FIGURE 5 FOR BREAKDOWN) UOC: 3KP	1
2	XBFZZ	80063	SM-D-456203-2	PLUG, PIPE UOC: 3KP	1
3	PAFZZ	89016	F36237-22	SCREW, MACHINE UOC: 3KP	12
4	PAFZZ	88240	SC-B-83314-42CE	CATCH, CLAMPING UOC: 3KP	4
5	PAFZZ	89016	F36237-20	SCREW, MACHINE UOC: 3KP	4
6	PAFZZ	80063	SM-B-456297	RING, DEE UOC: 3KP	2
7	PAFZZ	80063	SM-D-456235	CASE ASSY UOC: 3KP	1
8	PAFZZ	81348	MS51957-27	SCREW, MACHINE UOC: 3KP	6
9	XBFFF	80063	SM-D-456226	CHASSIS ASSEMBLY (SEE FIGURE 4 FOR BREAKDOWN) UOC: 3KP	1
10	PAFZZ	80063	SM-C-456215	COVER, BATTERY BOX UOC: 3KP	1
11	XBFZZ	80063	SM-D-456293	WIRING ASSEMBLY UOC: 3KP	1
12	PAFZZ	71785	1066	STRAP, RETAINING UOC: 3KP	1
13	PAFZZ	96906	MS35233-25	SCREW, MACHINE UOC: 3KP	1
14	PAFZZ	96906	MS35338-136	WASHER, LOCK UOC: 3KP	1

END OF FIGURE

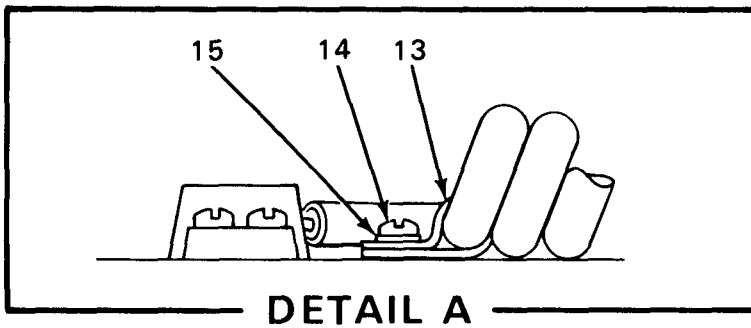
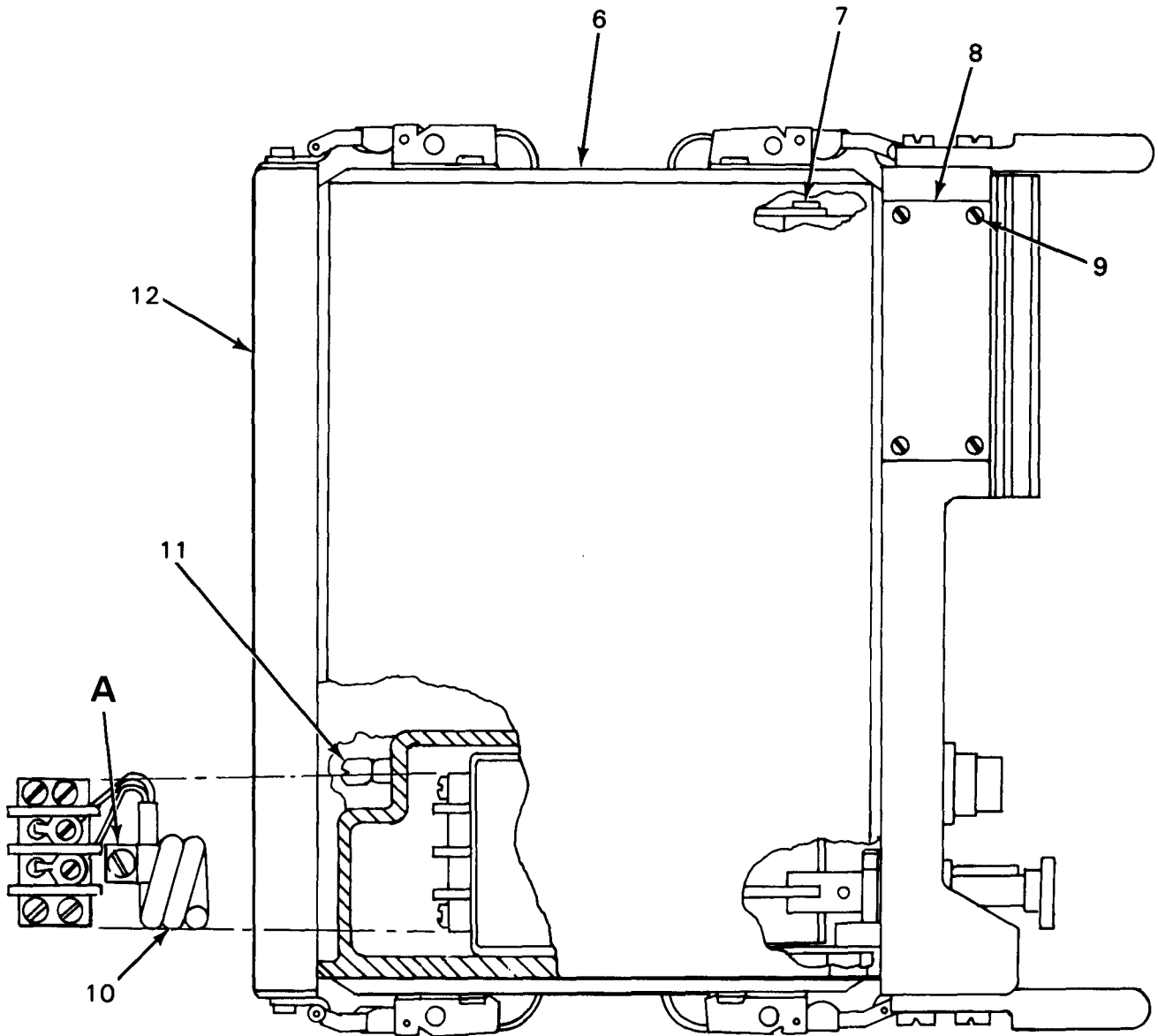






CEQAP004

Figure 3. Radio Control Set C-2328A/GRA-39, C-2328B/GRA-39, and C-2328C/GRA-39  
(Sheet 1 of 2)



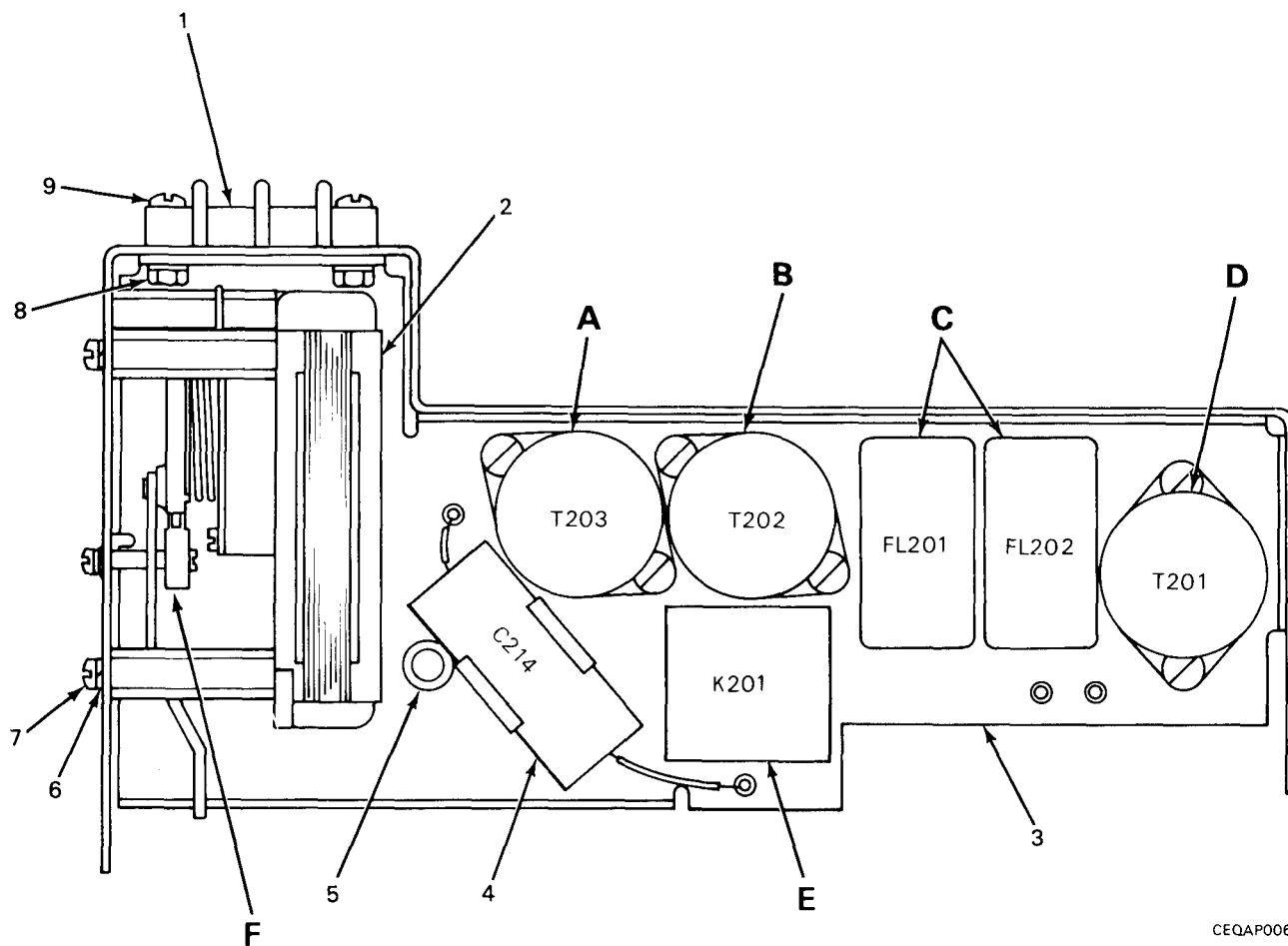
CEQAP005

Figure 3. Radio Control Set C-2328A/GRA-39, C-2328B/GRA-39, and C-2328C/GRA-39  
(Sheet 2 of 2)

(1) ITEM NO	(2) SMR CODE	(3) FSCM	(4) PART NUMBER	(5) DESCRIPTION AND USABLE ON CODE (UOC)	(6) QTY
				GROUP 01 RADIO CONTROL SET C-2328A/ GRA-39,C-2328B/GRA-39 C-2328C/GRA-39	
				FIGURE 3	
1	PAFFF	80063	SM-D-450173	PANEL ASSEMBLY (SEE FIGURE 6 FOR BREAKDOWN) UOC:AVZ,HDQ,3KM	1
2	PAFZZ	89016	F36237-22	SCREW,MACHINE UOC:AVZ,HDQ,3KM	12
3	PAFZZ	88240	SC-B-83314-42CE	CATCH,CLAMPING UOC:AVZ,HDQ,3KM	4
4	PAFZZ	89016	F36237-20	SCREW,MACHINE UOC:AVZ,HDQ,3KM	4
5	PAFZZ	80063	SM-B-456297	RING,DEE UOC:AVZ,HDQ,3KM	2
6	PAFZZ	80063	SM-D-450187	CASE,RECEIVER-TRANS UOC:AVZ,HDQ,3KM	1
7	PAFZZ	81348	MS51957-27	SCREW,MACHINE UOC:AVZ,HDQ,3KM	6
8	MDOZZ	80063	SM-C-334390	PLATE,IDENTIFICATIO FOR INSTRUCTIONS SEE SB 11-631 UOC:AVZ,HDQ,3KM	1
9	PAFZZ	96906	MS21318-2	SCREW,DRIVE UOC:AVZ,HDQ,3KM	4
10	XBFZZ	80063	SM-D-450178-10	WIRING ASSEMBLY UOC:AVZ,HDQ,3KM	1
11	XBFZZ	80063	SM-B-450161	PLUG,PIPE UOC:AVZ,HDQ,3KM	1
12	PAFZZ	80063	SM-C-456215	COVER,BATTERY BOX UOC:AVZ,HDQ,3KM	1
13	PAFZZ	71785	1066	STRAP,RETAINING UOC:AVZ,HDQ,3KM	1
14	PAFZZ	96906	MS35233-25	SCREW,MACHINE UOC:AVZ,HDQ,3KM	1
15	PAFZZ	96906	MS35338-136	WASHER,LOCK UOC:AVZ,HDQ,3KM	1

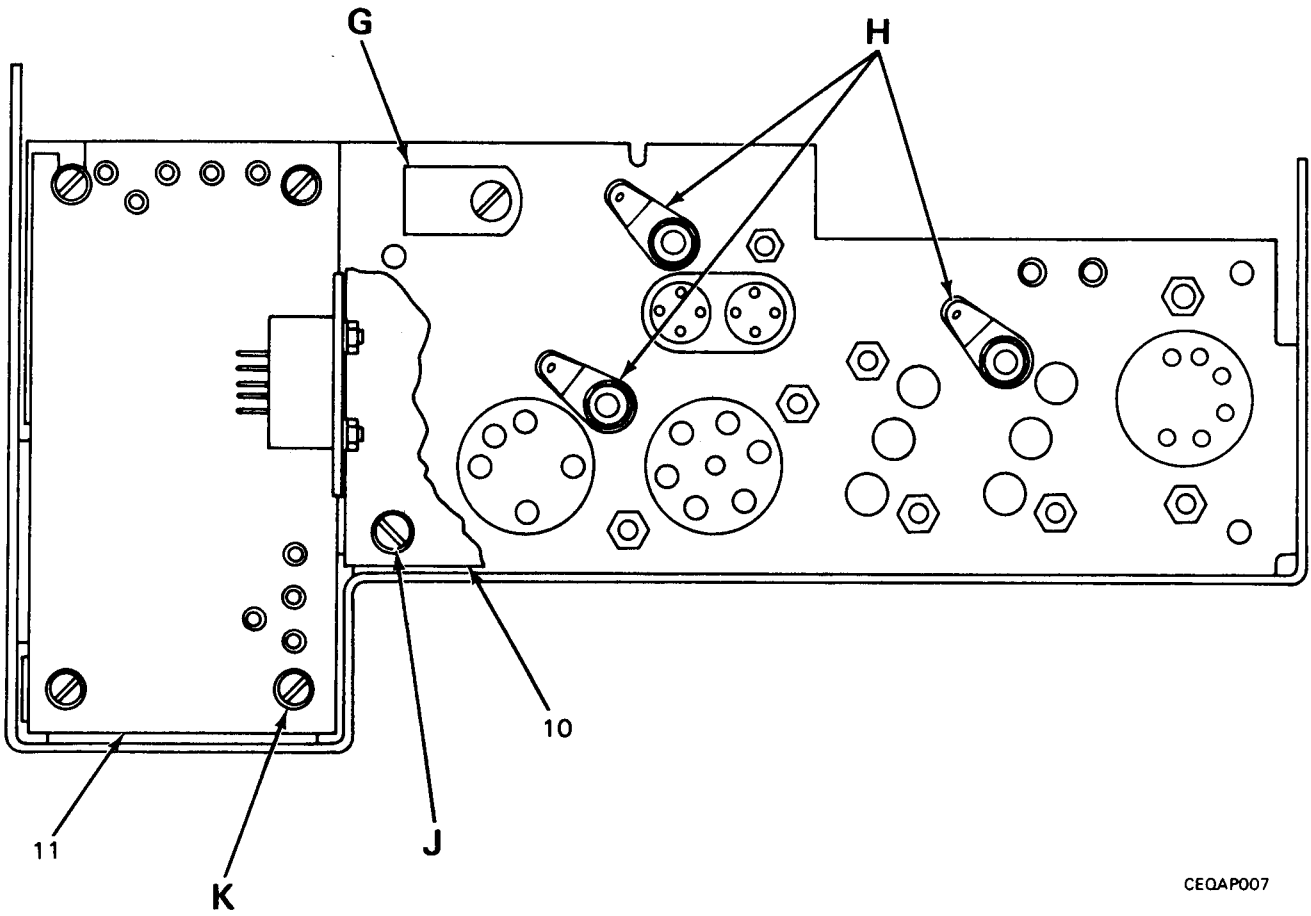
END OF FIGURE





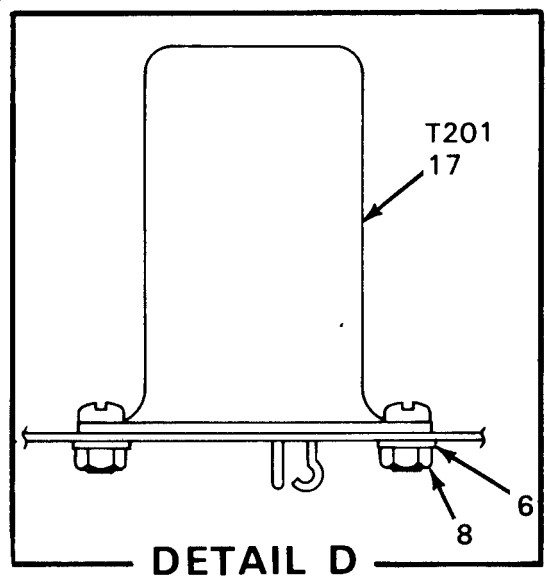
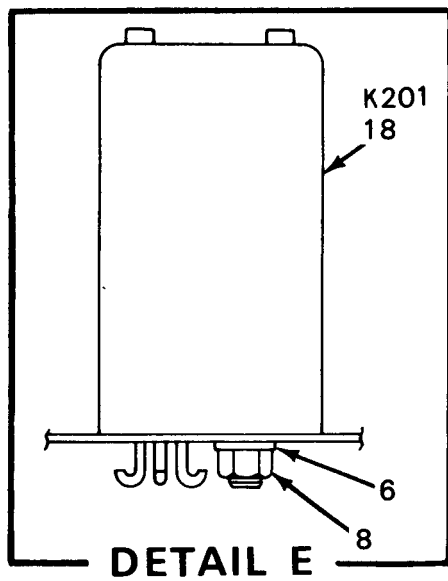
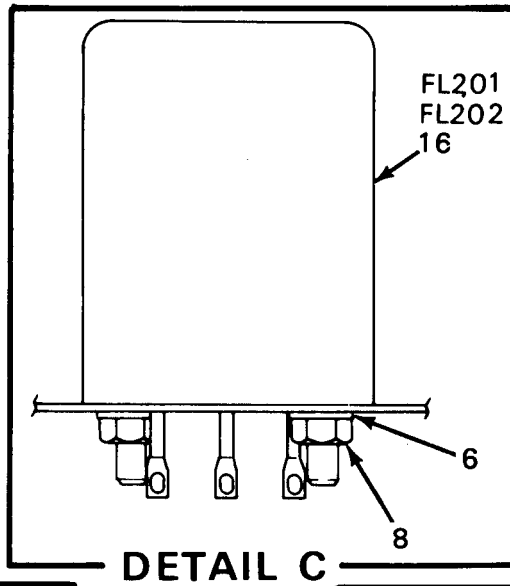
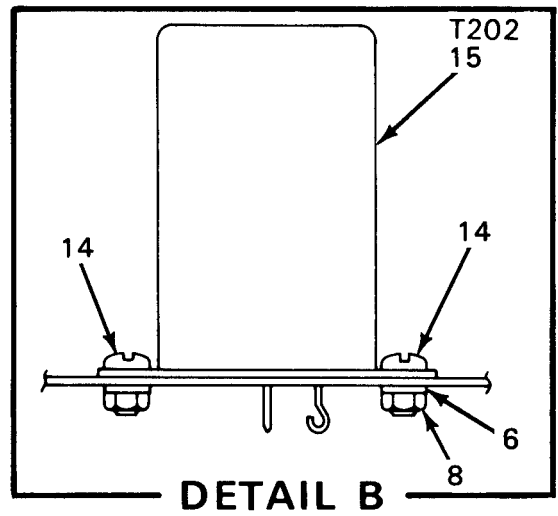
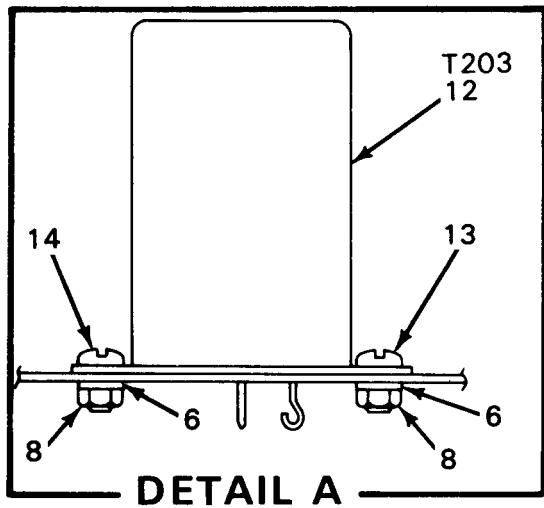
CEQAP006

Figure 4. Chassis Assembly (Sheet 1 of 4)



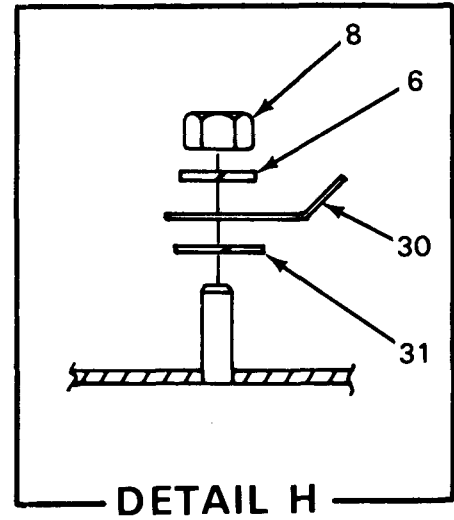
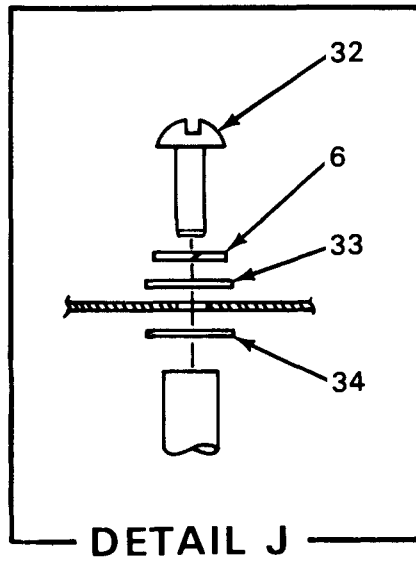
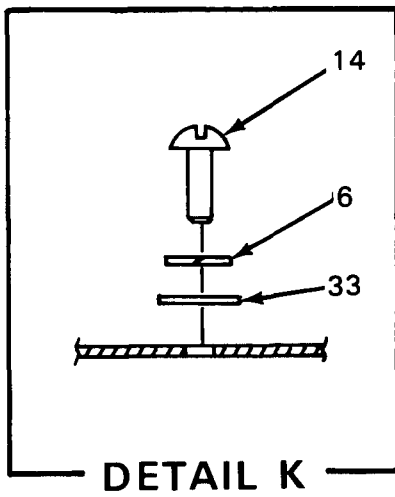
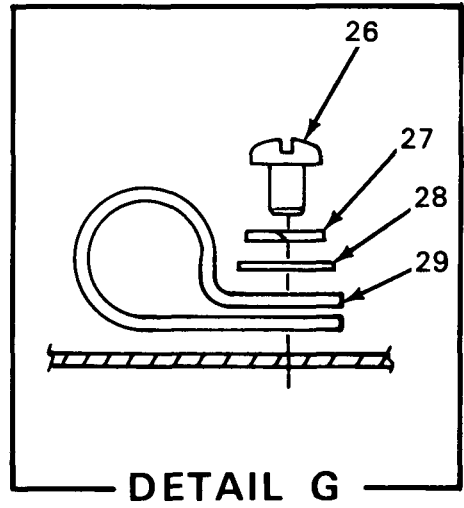
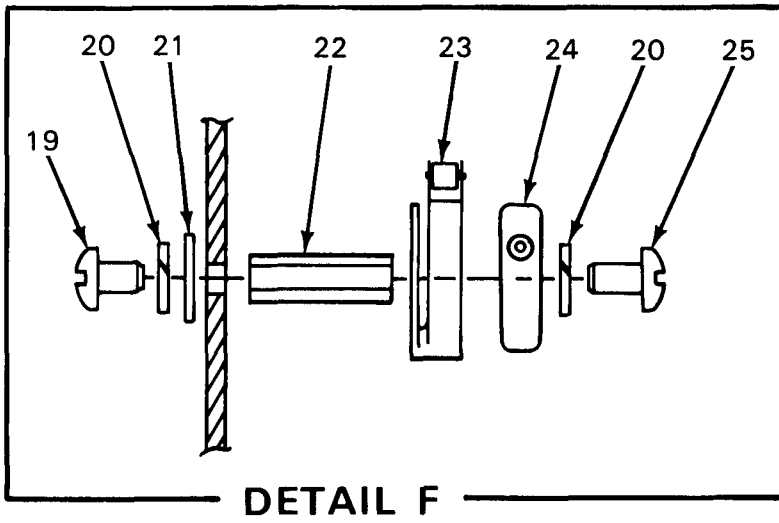
CEQAP007

Figure 4. Chassis Assembly (Sheet 2 of 4)



CEQAP008

Figure 4. Chassis Assembly (Sheet 3 of 4)



CEQAP009

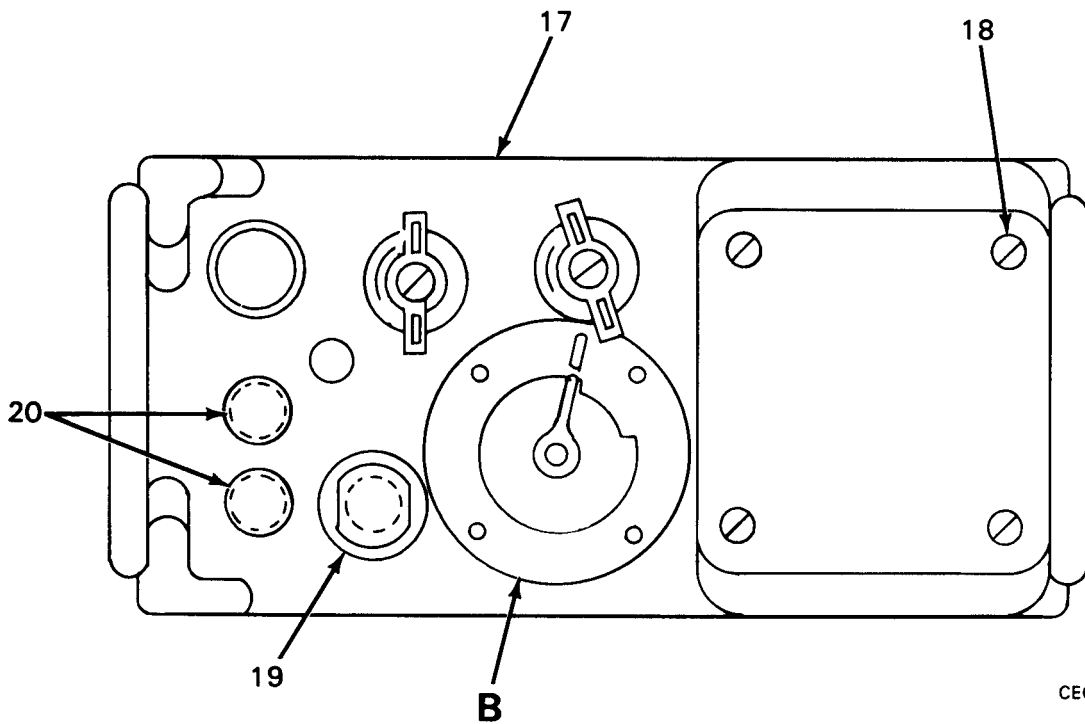
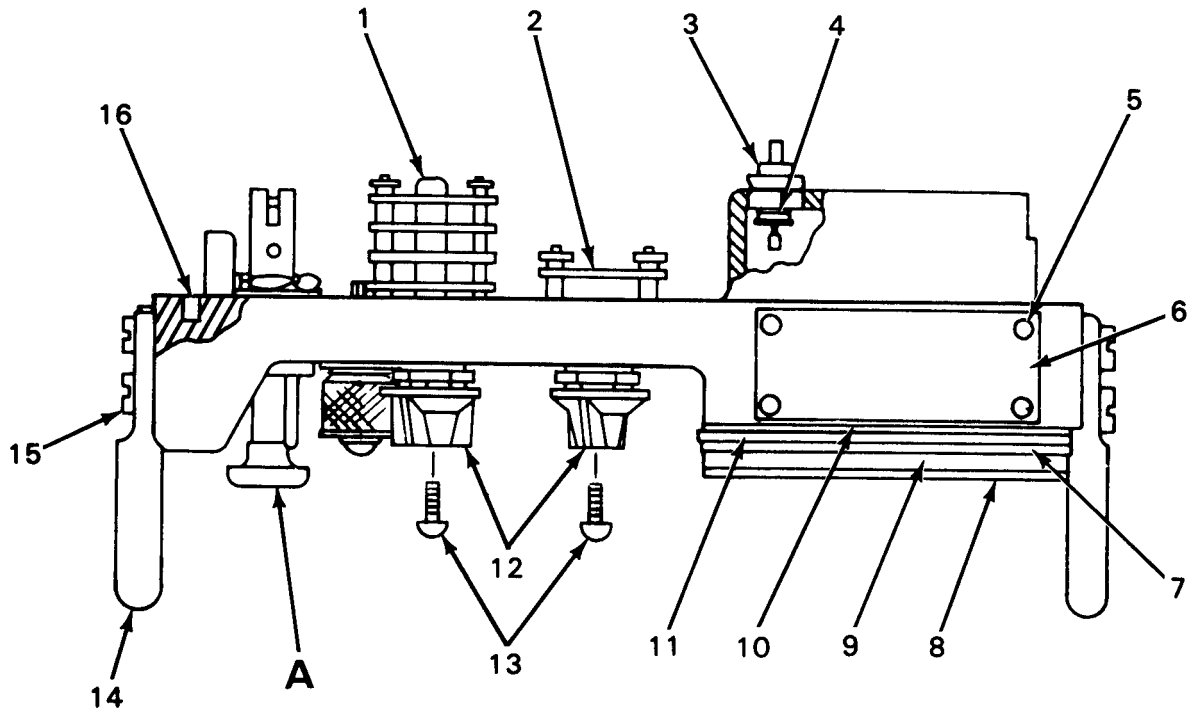
Figure 4. Chassis Assembly (Sheet 4 of 4)



(1) ITEM NO	(2) SMR CODE	(3) FSCM	(4) PART NUMBER	(5) DESCRIPTION AND USABLE ON CODE (UOC)	(6) QTY
GROUP 0101 CHASSIS ASSEMBLY					
FIGURE 4					
1	XBFZZ	75382	600C-Y-2	TERMINAL BLOCK	1
2	PAFZZ	80063	SM-C-456248	CONTROL SUBASSEMBLY	1
3	XBFZZ	80063	SM-C-456227	CHASSIS ASSEMBLY	1
4	PAFZZ	00656	P123ZN913	CAPACITOR, FIXED, MET	1
5	PAFZZ	14370	3055	GROMMET, NONMETALLIC	1
6	PAFZZ	96906	MS-35338-135	WASHER, LOCK	28
7	PAFZZ	81348	MS51957-15	SCREW, MACHINE	4
8	PAFZZ	96906	MS35649- 44 2	NUT, PLAIN, HEXAGON	16
9	PAFZZ	96906	MS-51957-17	SCREW, MACHINE	4
10	XBFZZ	80063	SM-D-456281	PRINTED CKT ASSY	1
11	PAFZZ	80063	SM-D-456286	CONTROL SUBASSEMBLY	1
12	PAFZZ	08715	W-5317	TRANSFORMER, AUDIO F	1
13	PAFZZ	96906	MS-51957-14	SCREW, MACHINE	1
14	PAFZZ	96906	MS51957-13	SCREW, MACHINE	9
15	PAFZZ	08715	W5316	TRANSFORMER, AUDIO F	1
16	PAFZZ	08715	R-1602	FILTER, LOW PASS	2
17	PAFZZ	08715	W-5315	TRANSFORMER, AUDIO F	1
18	PAFZZ	80063	SM-C-456330	RELAY, ELECTROMAGNET	1
19	PAFZZ	96906	MS51957-2	SCREW, MACHINE	2
20	PAFZZ	81349	MS35338-134	WASHER, LOCK	4
21	PAFZZ	88044	AN960C2L	WASHER, FLAT	2
22	PAFZZ	80063	SM-B-456240	NUT, PLAIN, HEXAGON	2
23	PAFZZ	91929	JS-70	ACTUATOR	1
24	PAFZZ	91929	11SM1	SWITCH, SENSITIVE	1

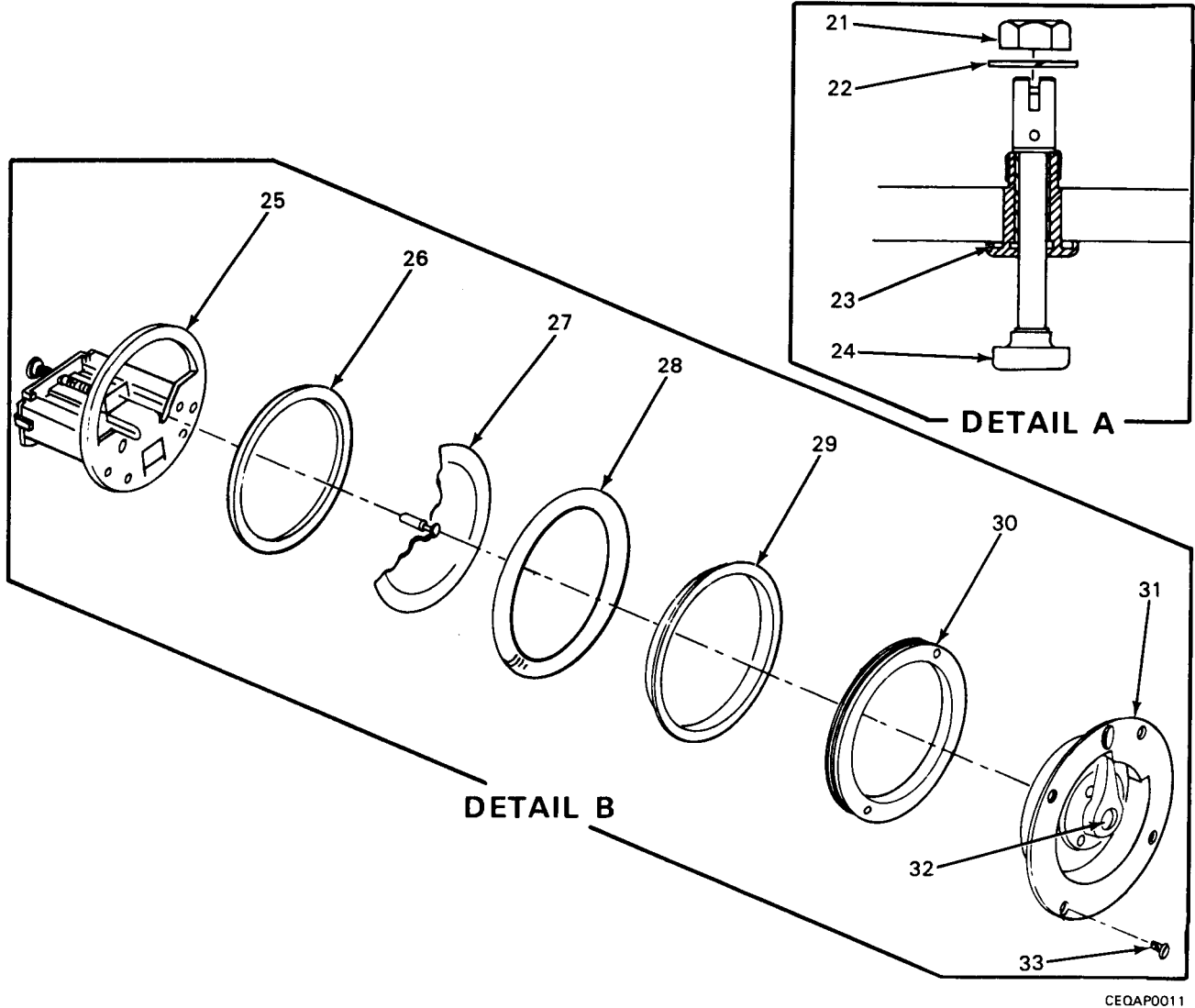
(1) ITEM NO	(2) SMR CODE	(3) FSCM	(4) PART NUMBER	(5) DESCRIPTION AND USABLE ON CODE (UOC)	(6) QTY
25	PAFZZ	96906	MS51957-6	SCREW,MACHINE	2
26	PAFZZ	96906	MS51957-28	SCREW,MACHINE	1
27	PAFZZ	96906	MS35338-136	WASHER, LOCK	1
28	PAFZZ	88044	AN960-C6	WASHER, FLAT	1
29	PAFZZ	09922	HP-6N	CLAMP, LOOP	1
30	PAFZZ	96906	MS77068-1	TERMINAL, LUG	3
31	PAFZZ	96906	MS35333-87	WASHER, LOCK	3
32	PAFZZ	80063	SM-B-456249	SCREW, EXTERNALLY RE	4
33	PAFZZ	80063	SM-B-456300	WASHER, FLAT	8
34	PAFZZ	80063	SM-B-456344	NUT, PLAIN, ROUND	4

END OF FIGURE



CEQAP0010

Figure 5. Panel Assembly (AN/GRA-39) (Sheet 1 of 2)



CEQAP0011

Figure 5. Panel Assembly (AN/GRA-39) (Sheet 2 of 2)

(1) ITEM NO	(2) SMR CODE	(3) FSCM	(4) PART NUMBER	(5) DESCRIPTION AND USABLE ON CODE (UOC)	(6) QTY
GROUP 0102 PANEL ASSEMBLY (AN/GRA-39)					
FIGURE 5					
1	PAFZZ	80063	SM-C-456337	SWITCH,ROTARY UOC: 3KP	1
2	PAFZZ	71590	BAS842-004	RESISTOR, VARIABLE,N UOC: 3KP	1
3	XBFZZ	71289	X-1990	TERMINAL, STUD UOC: 3KP	2
4	PAFZZ	96906	MS28775-010	PACKING, PREFORMED UOC: 3KP	2
5	PAFZZ	80063	SM-D-456244-4	SCREW, DRIVE UOC: 3KP	4
6	MDOZZ	80063	SM-B-456343	PLATE, IDENTIFICATIO FOR INSTRUCTIONS SEE SB 11-631.) UOC: 3KP	1
7	PAFZZ	80063	SM-B-456237	GASKET UOC: 3KP	1
8	XBFZZ	80063	SM-B-456234	COVER UOC: 3KP	1
9	PAFZZ	81349	M12606-01	LOUDSPEAKER, PERMANE UOC: 3KP	1
10	PAFZZ	80063	SM-B-456236	GASKET UOC: 3KP	1
11	PAFZZ	80063	SM-B-456238	SPACER, PLATE UOC: 3KP	1
12	PAOZZ	80063	SM-B-456374	KNOB UOC: 3KP	2
13	PAOZZ	96906	MS51957-11	SCREW, MACHINE UOC: 3KP	2
14	PAFZZ	80063	SM-B-456232	HANDLE BAIL UOC: 3KP	2
15	PAFZZ	96906	MS51957-63	SCREW, MACHINE UOC: 3KP	8
16	XBFZZ	80063	SM-B-456245	GASKET UOC: 3KP	1
17	XBFZZ	80063	SM-C-456218	PANEL, MARKED UOC: 3KP	1
18	PAFZZ	96906	MS51959-47	SCREW, MACHINE UOC: 3KP	4
19	PAFZZ	80058	U-183/U	CONNECTOR, RECEPTACL UOC: 3KP	1
20	PAFZZ	81349	PB08NA01	POST BINDING ELECTR UOC: 3KP	2
21	PAFZZ	80063	SM-B-456301	NUT, HEXAGON UOC: 3KP	1
22	PAFZZ	78189	1224-06-00-0542B	WASHER, LOCK UOC: 3KP	1
23	PAFZZ	96906	MS9021-016	PACKING, PREFORMED UOC: 3KP	1

(1) ITEM NO	(2) SMR CODE	(3) FSCM	(4) PART NUMBER	(5) DESCRIPTION AND USABLE ON CODE (UOC)	(6) QTY
24	PAFZZ	80063	SM-B-456264	PLUNGER ASSEMBLY UOC:3KP	1
25	PAFZZ	80063	SM-C-168992	BUZZER UOC:3KP	1
26	PAFZZ	80063	SM-B-169019	SPACER, RING UOC:3KP	1
27	PAFZZ	80063	SM-B-169007	DIAPHRAGM, EARPHONE UOC:3KP	1
28	PAFZZ	81321	62309-14	PACKING, PREFORMED UOC:3KP	1
29	PAFZZ	80063	SM-B-169020	RING, RETAINING UOC:3KP	1
30	PAFZZ	80063	SM-B-169018	NUT, PLAIN, ROUND UOC:3KP	1
31	PAFZZ	80063	SM-C-168986	COVER, MICROPHONE UOC:3KP	1
32	PAFZZ	88044	AN526C632-5	SCREW, MACHINE UOC:3KP	1
33	PAFZZ	96906	MS35190-292	SCREW, MACHINE UOC:3KP	4

END OF FIGURE

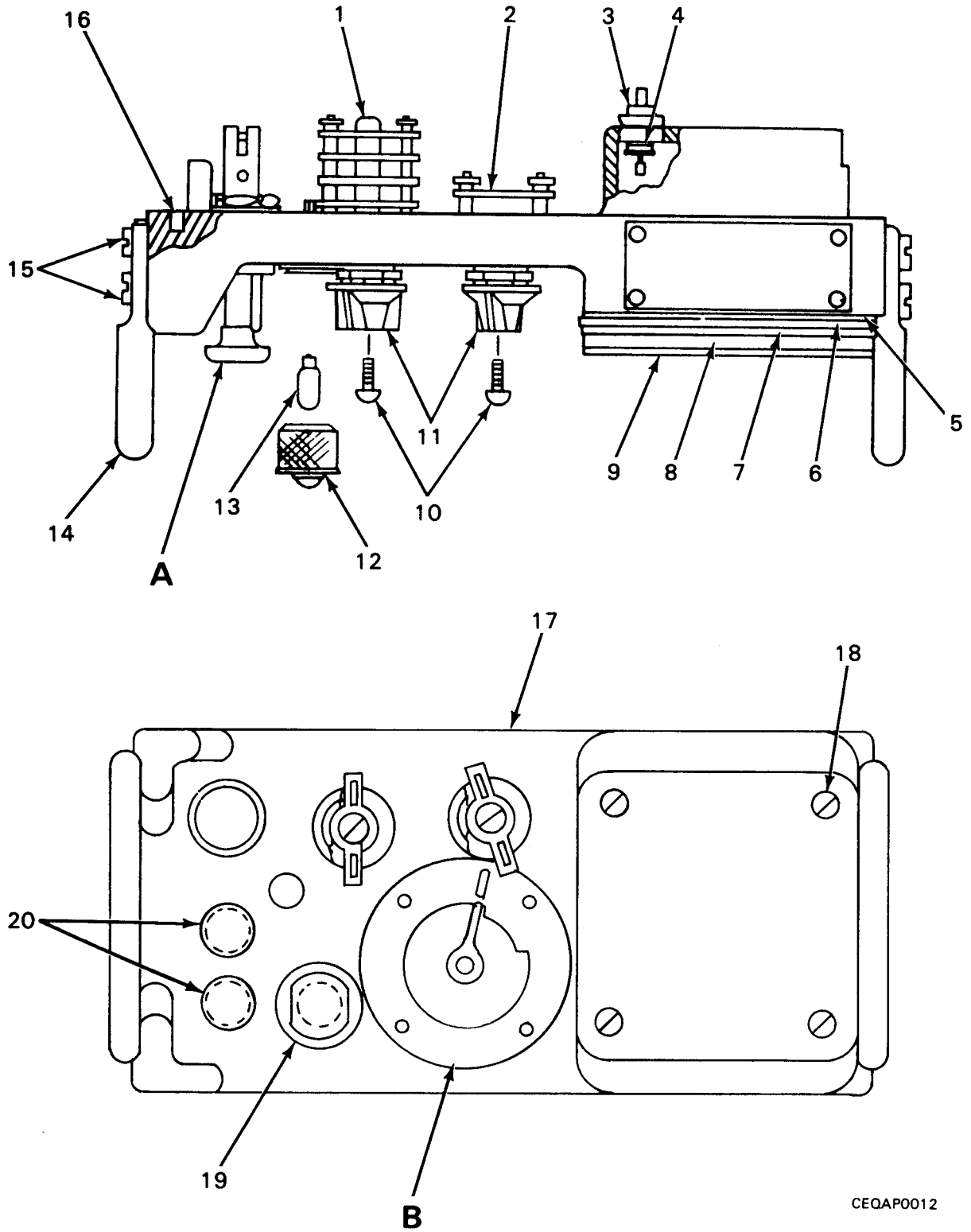


Figure 6. Panel Assembly (AN/GRA-39A, B, and C) (Sheet 1 of 2)

CEQAP0012

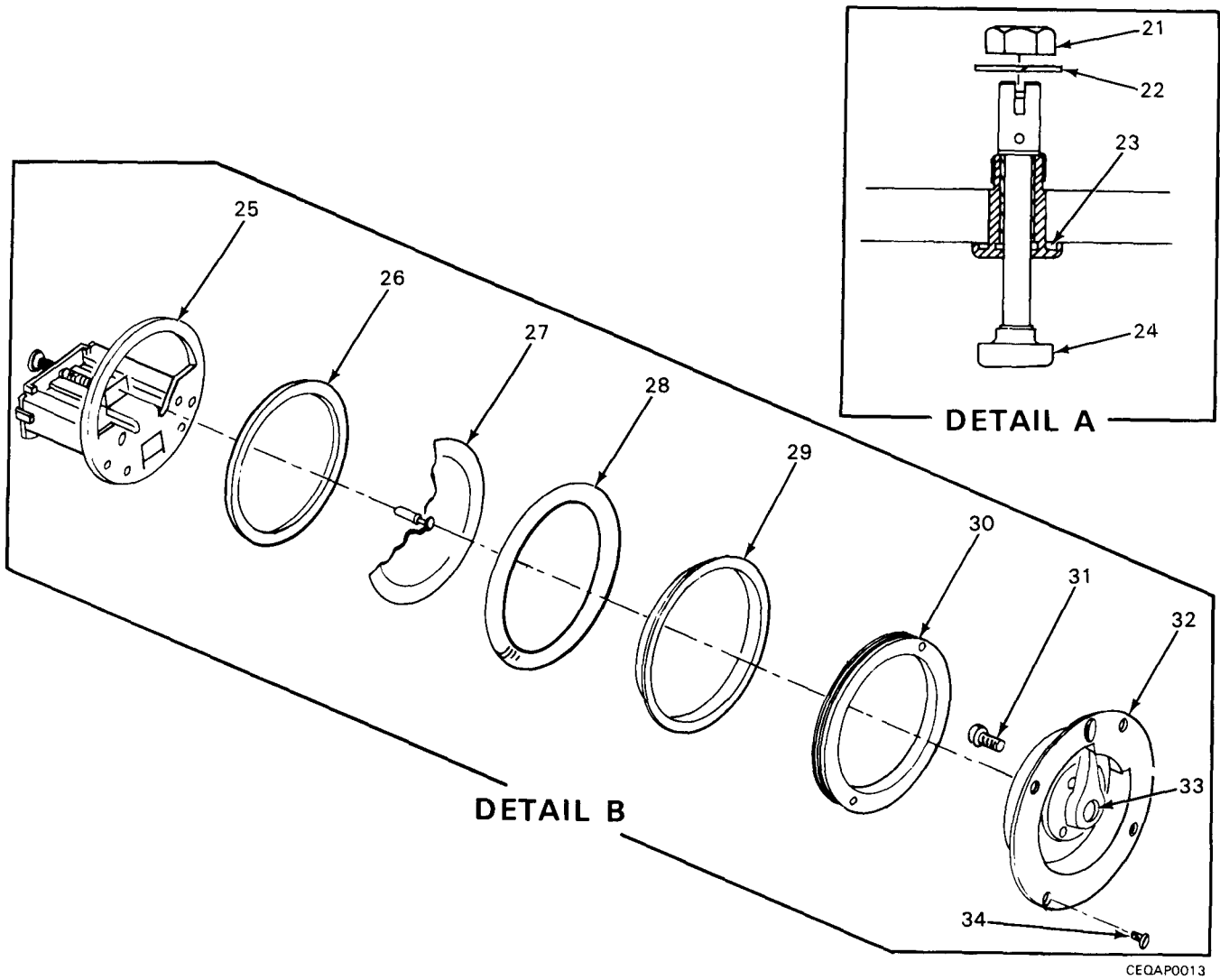


Figure 6. Panel Assembly (AN/GRA-39A, B, and C) (Sheet 2 of 2)



(1) ITEM NO	(2) SMR CODE	(3) FSCM	(4) PART NUMBER	(5) DESCRIPTION AND USABLE ON CODE (UOC)	(6) QTY
				GROUP 0102 PANEL ASSEMBLY (AN/GRA-39A, B, AND C)	
				FIGURE 6	
1	PAFZZ	80063	SM-C-456337	SWITCH, ROTARY UOC: AVZ, HDQ, 3KM	1
2	PAFZZ	71590	BAS842-004	RESISTOR, VARIABLE, N UOC: AVZ, HDQ, 3KM	1
3	PAFZZ	71279	570-1990-01-05-0 0	TERMINAL, FEEDTHRU UOC: AVZ, HDQ, 3KM	2
4	PAFZZ	96906	MS28775-010	PACKING, PREFORMED UOC: AVZ, HDQ, 3KM	2
5	PAFZZ	80063	SM-B-456236	GASKET UOC: AVZ, HDQ, 3KM	1
6	PAFZZ	80063	SM-B-456238	SPACER, PLATE UOC: AVZ, HDQ, 3KM	1
7	PAFZZ	80063	SM-B-456237	GASKET UOC: AVZ, HDQ, 3KM	1
8	PAFZZ	81349	M12606-01	LOUDSPEAKER, PERMANE UOC: AVZ, HDQ, 3KM	1
9	PAFZZ	80063	SM-B-454823	COVER, LOUDSPEAKER UOC: AVZ, HDQ, 3KM	1
10	PAOZZ	89016	F36237-22	SCREW, MACHINE UOC: AVZ, HDQ, 3KM	2
11	PAOZZ	80063	SM-B-456374	KNOB UOC: AVZ, HDQ, 3KM	2
12	PAOZZ	80063	SM-B-450166	HOUSING LAMP ASSY UOC: AVZ, HDQ, 3KM	1
13	PAOZZ	96906	MS25237-328	LAMP, INCANDESCENT UOC: AVZ, HDQ, 3KM	1
14	PAFZZ	80063	SM-B-456232	HANDLE BAIL UOC: AVZ, HDQ, 3KM	2
15	PAFZZ	96906	MS51957-46	SCREW, MACHINE UOC: AVZ, HDQ, 3KM	8
16	XDFZZ	80063	SM-B-456245	GASKET UOC: AVZ, HDQ, 3KM	1
17	XAFZZ	80063	SM-C-450188	PANEL, BLANK UOC: AVZ, HDQ, 3KM	1
18	PAFZZ	96906	MS51959-47	SCREW, MACHINE UOC: AVZ, HDQ, 3KM	4
19	PAFZZ	80063	SM-C-415681	CONNECTOR, RECEPACL UOC: AVZ, HDQ, 3KM	1
20	PAFZZ	81349	PB08NA01	POST, BINDING, ELECTR UOC: AVZ, HDQ, 3KM	2
21	PAFZZ	80063	SM-B-456301	NUT, HEXAGON UOC: AVZ, HDQ, 3KM	1
22	PAFZZ	78189	1224-06-00-0542B	WASHER, LOCK UOC: AVZ, HDQ, 3KM	1
23	PAFZZ	96906	MS9021-016	PACKING, PREFORMED UOC: AVZ, HDQ, 3KM	1
24	PAFZZ	80063	SM-B-456264	PLUNGER ASSEMBLY	1

(1) ITEM NO	(2) SMR CODE	(3) FSCM	(4) PART NUMBER	(5) DESCRIPTION AND USABLE ON CODE (UOC)	(6) QTY
25	XBFZZ	80063	SM-C-189369	UOC:AVZ,HDQ,3KM BUZZER ASSEMBLY	1
26	PAFZZ	80063	SM-B-169019	UOC:AVZ,HDQ,3KM SPACER,RING	1
27	PAFZZ	80063	SM-B-169007	UOC:AVZ,HDQ,3KM DIAPHRAGM,EARPHONE	1
28	PAFZZ	81321	62309-14	UOC:AVZ,HDQ,3KM PACKING,PREFORMED	1
29	PAFZZ	80063	SM-B-169020	UOC:AVZ,HDQ,3KM RING,RETAINING	1
30	PAFZZ	80063	SM-B-169018	UOC:AVZ,HDQ,3KM NUT,PLAIN,ROUND	1
31	PAFZZ	96906	MS51021-10	UOC:AVZ,HDQ,3KM SETSCREW	1
32	PAFZZ	80063	SM-C-168986	UOC:AVZ,HDQ,3KM COVER,MICROPHONE	1
33	PAFZZ	96906	MS-51957-14	UOC:AVZ,HDQ,3KM SCREW,MACHINE	1
34	PAFZZ	96906	MS35190-210	UOC:AVZ,HDQ,3KM SCREW,MACHINE	4

END OF FIGURE

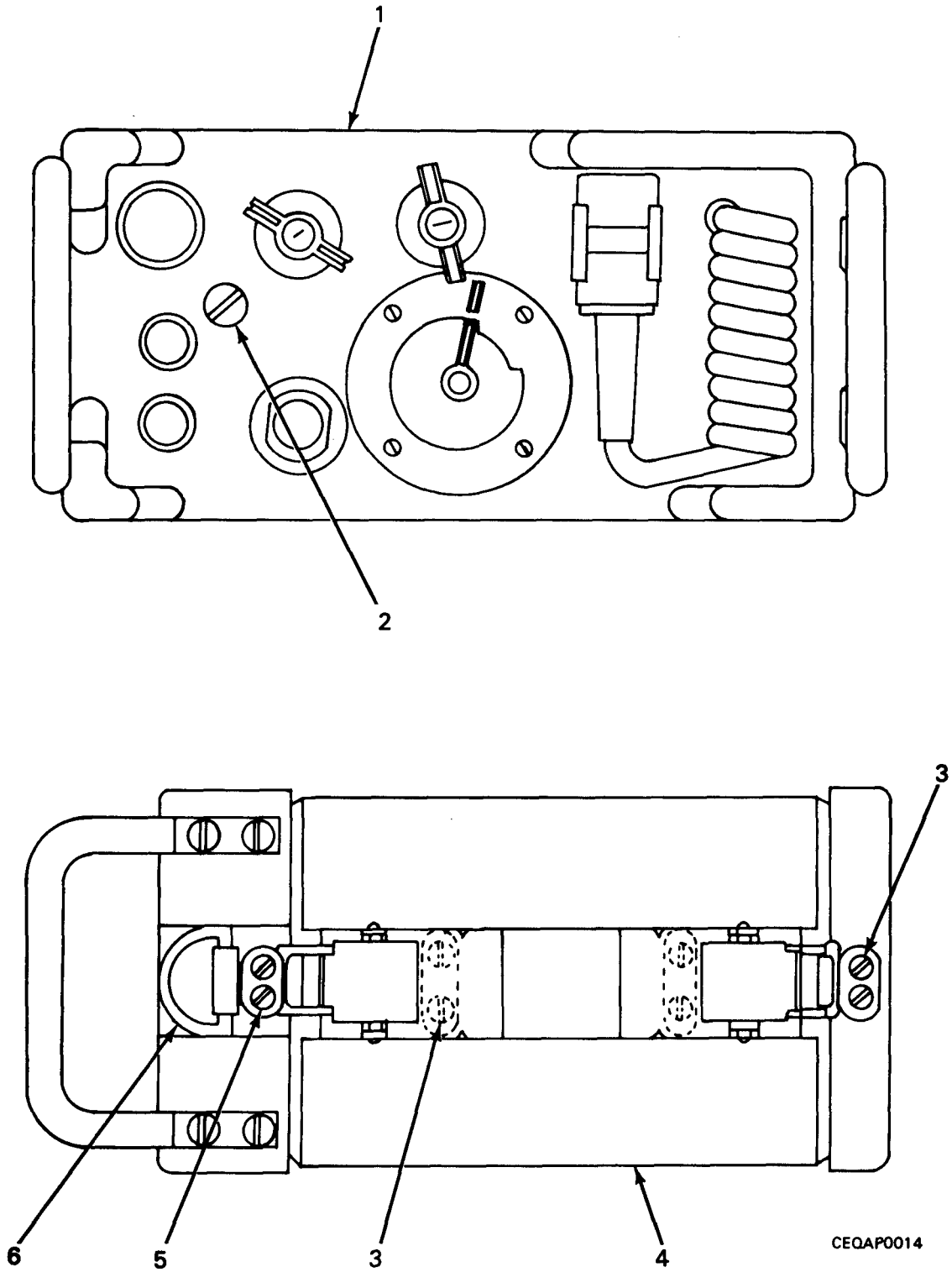


Figure 7. Radio Control Set C-2329/GRA-39 (Sheet 1 of 2)

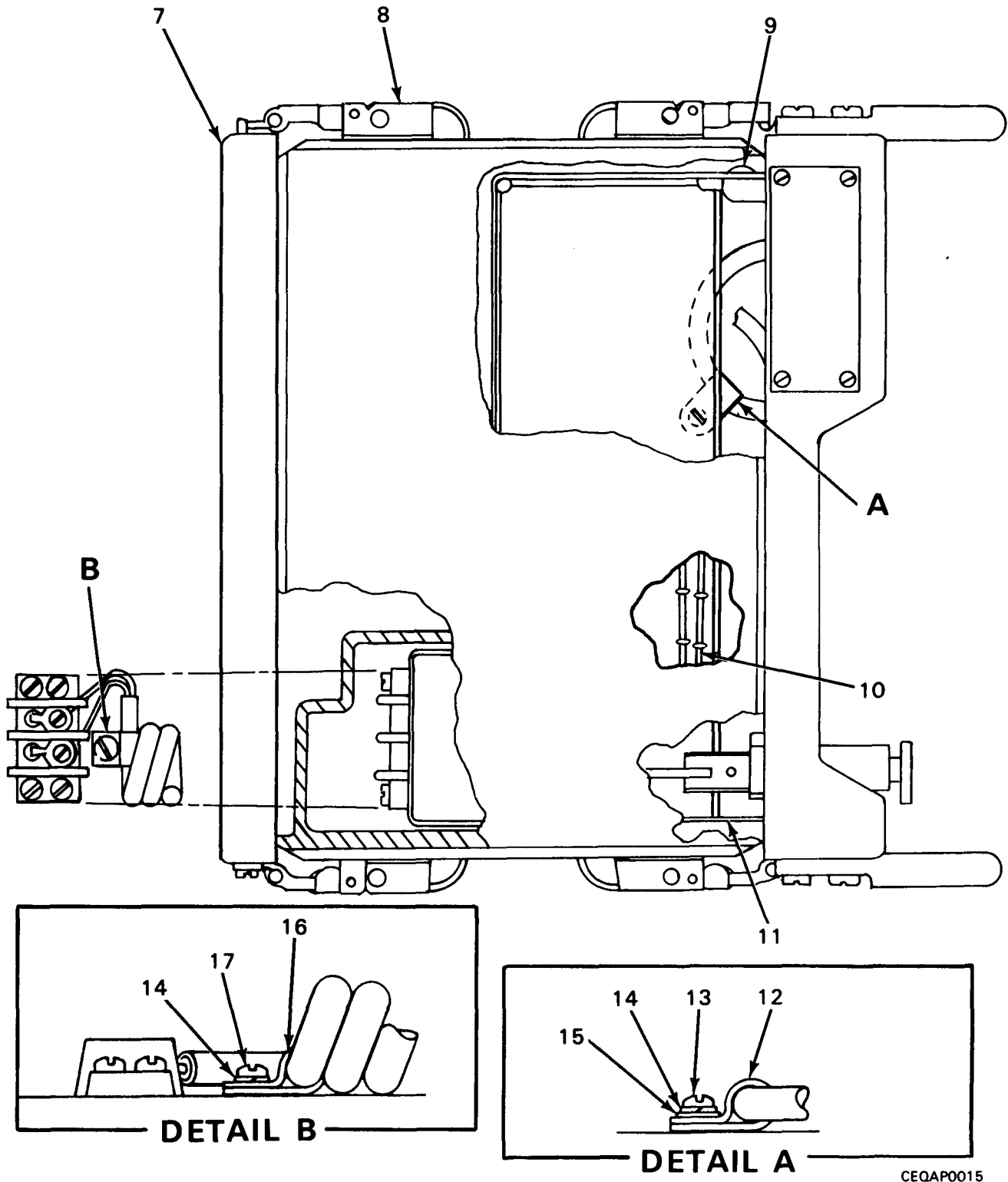


Figure 7. Radio Control Set C-2329/GRA-39 (Sheet 2 of 2)

CEQAP0015

(1) ITEM NO	(2) SMR CODE	(3) FSCM	(4) PART NUMBER	(5) DESCRIPTION AND USABLE ON CODE (UOC)	(6) QTY
GROUP 02 RADIO CONTROL SET C-2329/GR A-39					
FIGURE 7					
1	PAFFF	80063	SM-D-450174	PANEL ASSEMBLY (SEE FIGURE 10 FOR BREAKDOWN) UOC: 3KP	1
2	PAFZZ	80063	SM-D-456202-3	PLUG, PIPE UOC: 3KP	1
3	PAFZZ	89016	F36237-22	SCREW, MACHINE UOC: 3KP	12
4	PAFZZ	80063	SM-D-456235	CASE ASSY UOC: 3KP	1
5	PAFZZ	89016	F36237-20	SCREW, MACHINE UOC: 3KP	4
6	PAFZZ	80063	SM-B-456297	RING, DEE UOC: 3KP	2
7	PAFZZ	80063	SM-C-456215	COVER, BATTERY BOX UOC: 3KP	1
8	PAFZZ	88240	SC-B-83314-42CE	CATCH, CLAMPING UOC: 3KP	4
9	PAFZZ	81348	MS51957-27	SCREW, MACHINE UOC: 3KP	6
10	PAFZZ	80063	SM-D-456294	WIRING ASSEMBLY UOC: 3KP	1
11	XBFFF	80063	SM-D-456220	CHASSIS ASSEMBLY (SEE FIGURE 9 FOR BREAKDOWN) UOC: 3KP	1
12	PAFZZ	09922	HP-4N	CLAMP, LOOP UOC: 3KP	1
13	PAFZZ	96906	MS51957-28	SCREW, MACHINE UOC: 3KP	1
14	PAFZZ	96906	MS35338-136	WASHER, LOCK UOC: 3KP	2
15	PAFZZ	88044	AN960-C6	WASHER, FLAT UOC: 3KP	1
16	PAFZZ	80063	SM-D-456202-2	CLAMP UOC: 3KP	1
17	PAFZZ	96906	MS35233-25	SCREW, MACHINE UOC: 3KP	1

END OF FIGURE



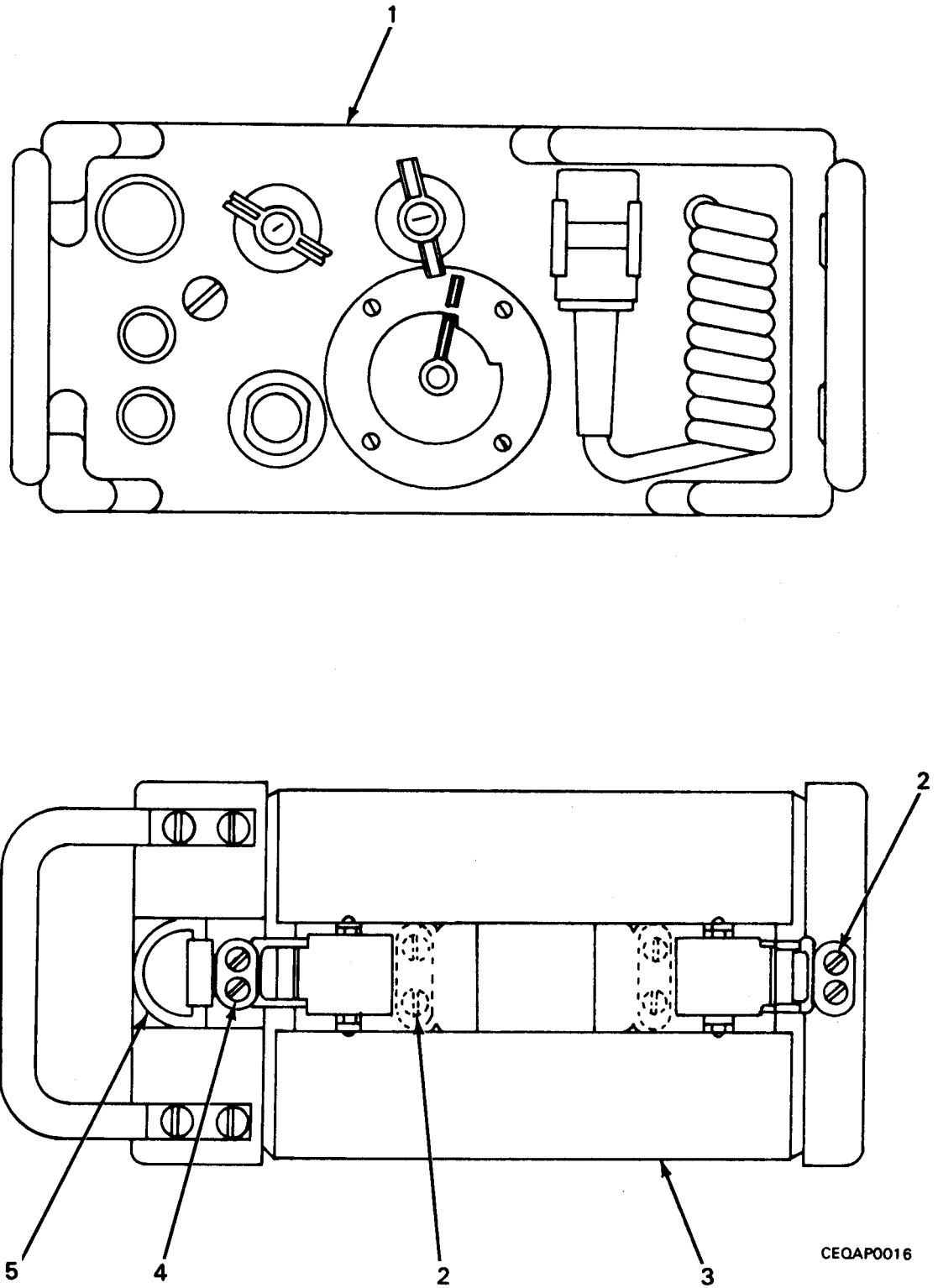


Figure 8. Radio Control Set C-2329A/GRA-39, C-2329B/GRA-39, and C-2329C/GRA-39  
(Sheet 1 of 2)

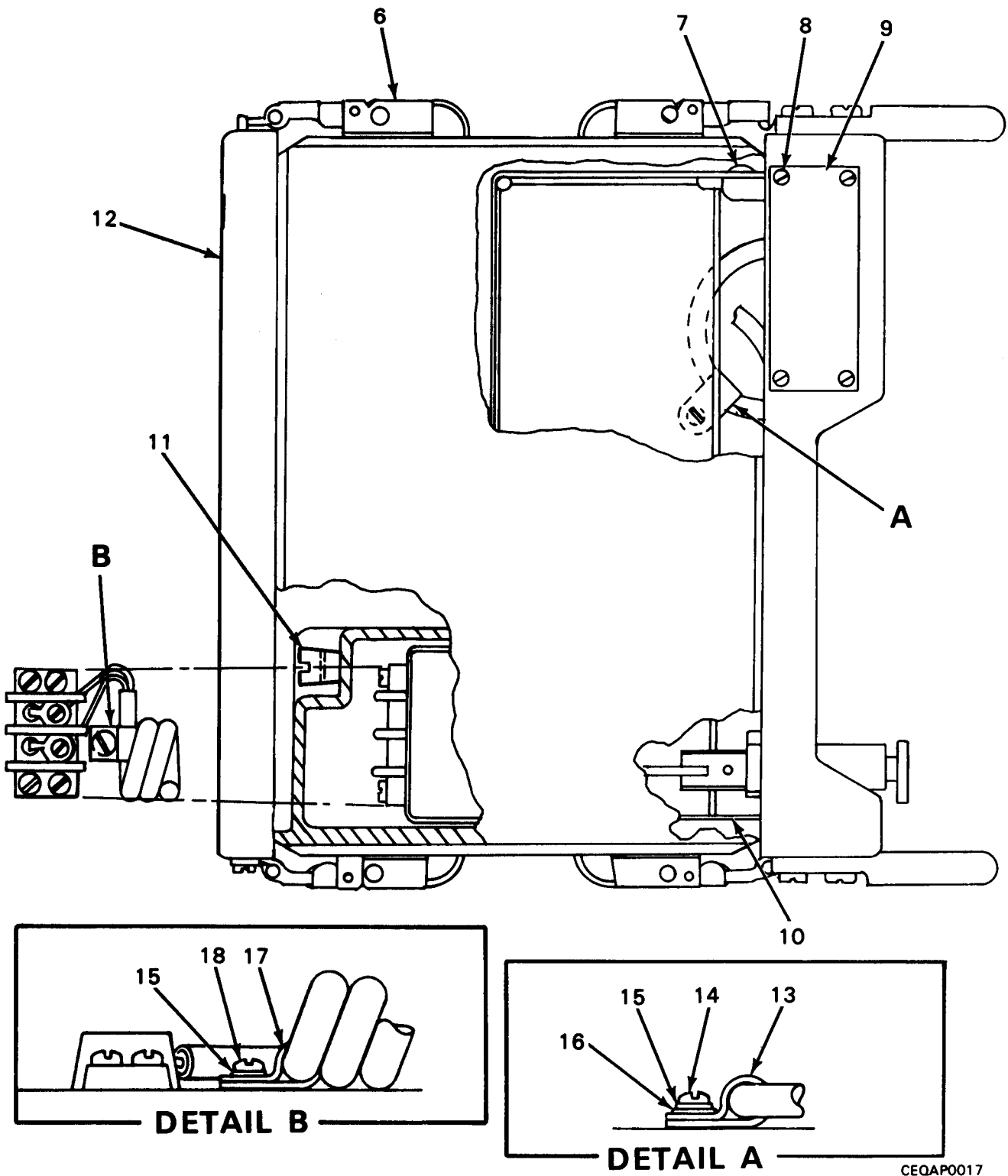


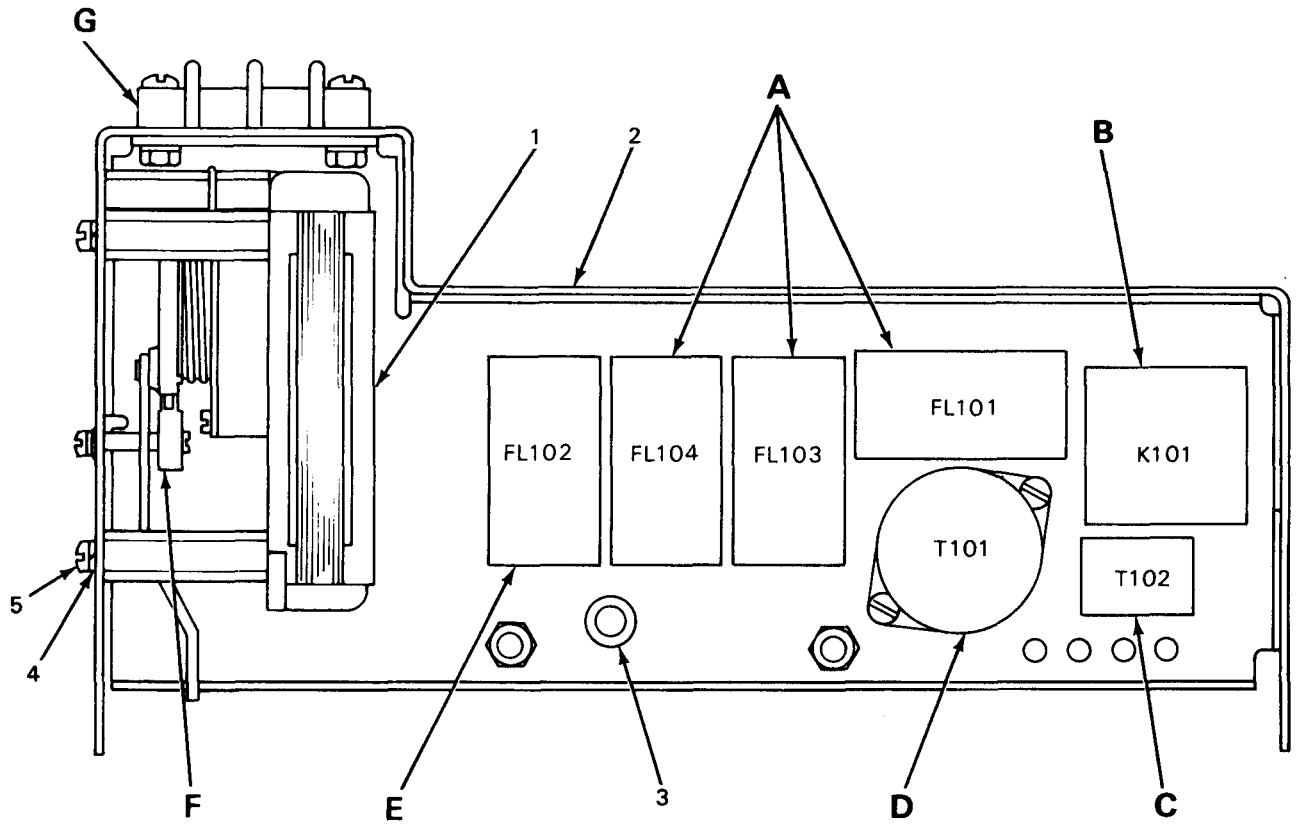
Figure 8. Radio Control Set C-2329A/GRA-39, C-2329B/GRA-39, and C-2329C/GRA-39  
(Sheet 2 of 2)



(1) ITEM NO	(2) SMR CODE	(3) FSCM	(4) PART NUMBER	(5) DESCRIPTION AND USABLE ON CODE (UOC)	(6) QTY
				GROUP 02 RADIO CONTROL SET C-2392A/ GRA-39,C-2329B/GRA-39 C-2329C/GRA-39	
				FIGURE 8	
1	PAFFF	80063	SM-D-450174	PANEL ASSEMBLY (SEE FIGURE 11 FOR BREAKDOWN) UOC:AVZ,HDQ,3KM	1
2	PAFZZ	89016	F36237-22	SCREW,MACHINE UOC:AVZ,HDQ,3KM	12
3	PAFZZ	80063	SM-D-450187	CASE,RECEIVER-TRANS UOC:AVZ,HDQ,3KM	1
4	PAFZZ	89016	F36237-20	SCREW,MACHINE UOC:AVZ,HDQ,3KM	4
5	PAFZZ	80063	SM-B-456297	RING,DEE UOC:AVZ,HDQ,3KM	2
6	PAFZZ	88240	SC-B-83314-42CE	CATCH CLAMPING UOC:AVZ,HDQ,3KM	4
7	PAFZZ	81348	MS51957-27	SCREW,MACHINE UOC:AVZ,HDQ,3KM	6
8	PAFZZ	88044	AN535-00-3	SCREW,DRIVE UOC:AVZ,HDQ,3KM	4
9	MDFZZ	80063	SM-C-334391	PLATE,INDENT FOR INSTRUCTION SEE SM 11-631 UOC:AVZ,HDQ,3KM	1
10	XBFZZ	80063	SM-D-450177	WIRING ASSEMBLY UOC:AVZ,HDQ,3KM	1
11	XBFZZ	80063	SM-B-450161	PLUG,PIPE UOC:AVZ,HDQ,3KM	1
12	PAFZZ	80063	SM-C-456215	COVER,BATTERY BOX UOC:AVZ,HDQ,3KM	1
13	PAFZZ	09922	HP-4N	CLAMP,LOOP UOC:AVZ,HDQ,3KM	1
14	PAFZZ	96906	MS51957-28	SCREW,MACHINE UOC:AVZ,HDQ,3KM	1
15	PAFZZ	96906	MS35338-136	WASHER,LOCK UOC:AVZ,HDQ,3KM	2
16	PAFZZ	96906	MS15795-905	WASHER,FLAT UOC:AVZ,HDQ,3KM	1
17	PAFZZ	71785	1066	STRAP,RETAINING UOC:AVZ,HDQ,3KM	1
18	PAFZZ	96906	MS35233-25	SCREW,MACHINE UOC:AVZ,HDQ,3KM	1

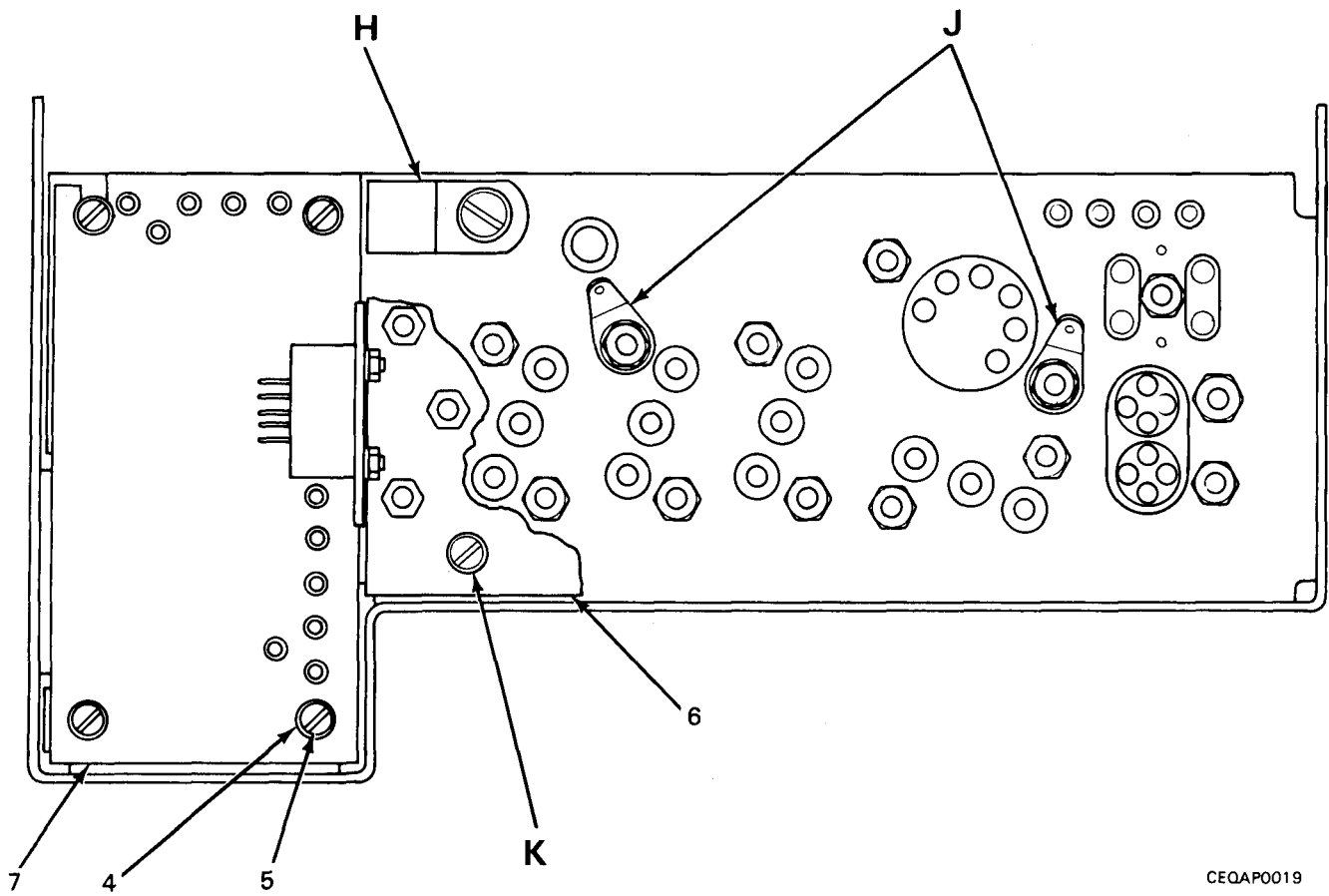
END OF FIGURE





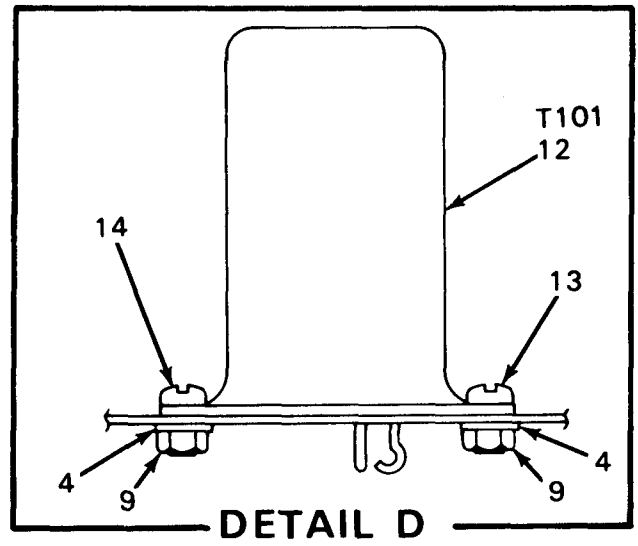
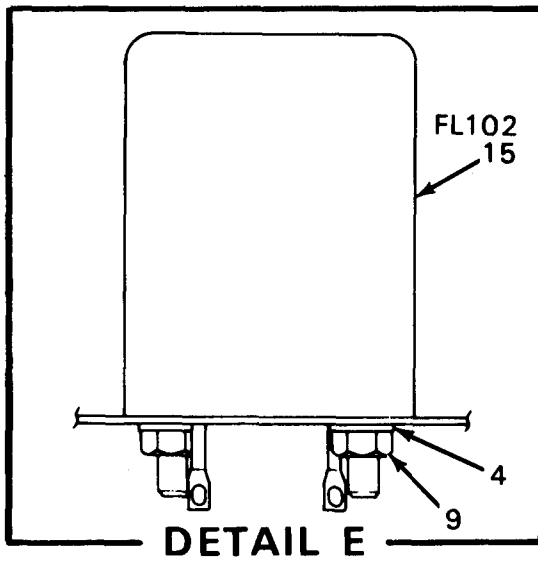
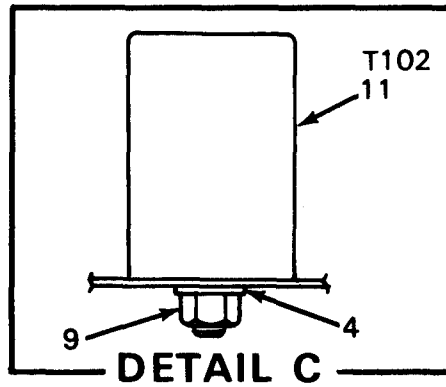
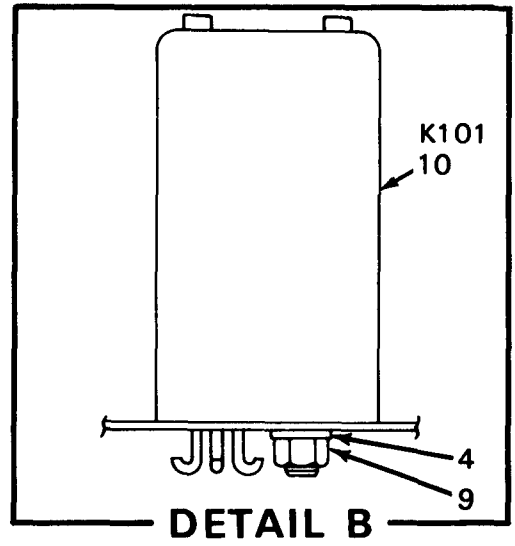
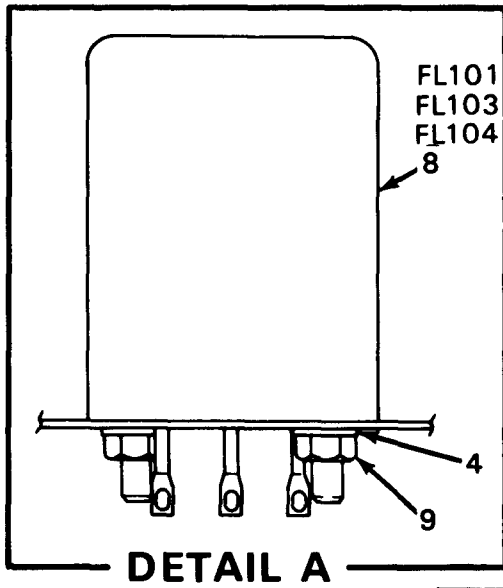
CEQAP0018

Figure 9. Chassis Assembly (Sheet 1 of 4)



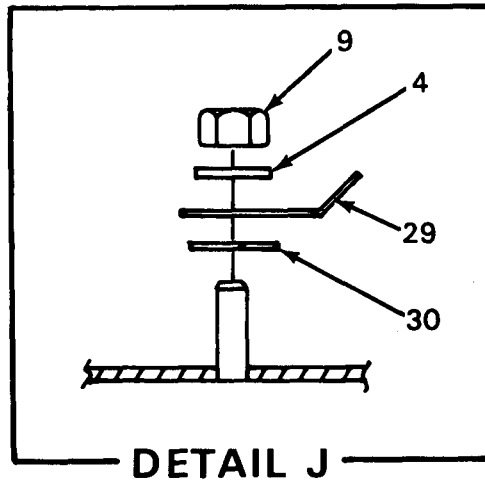
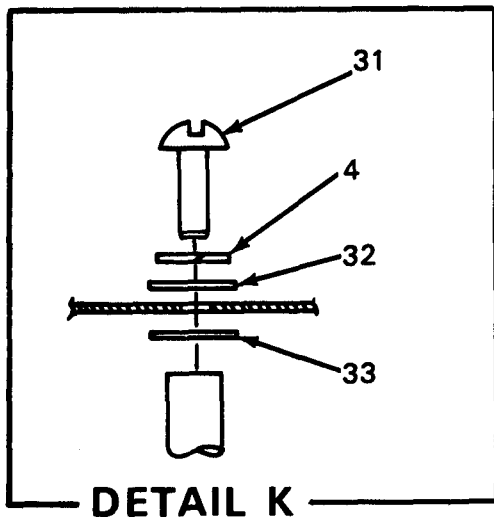
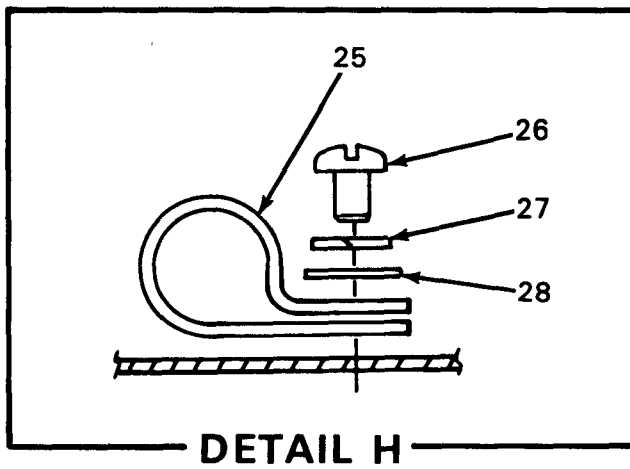
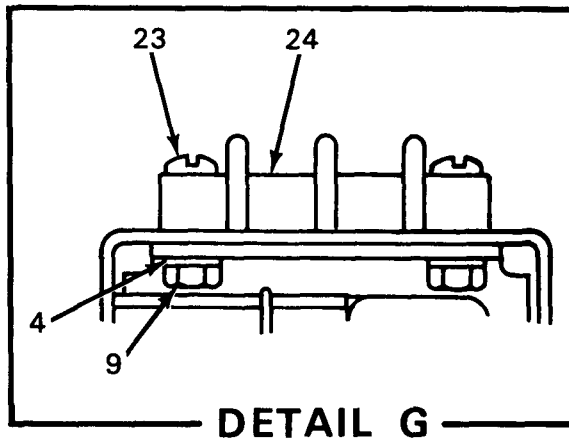
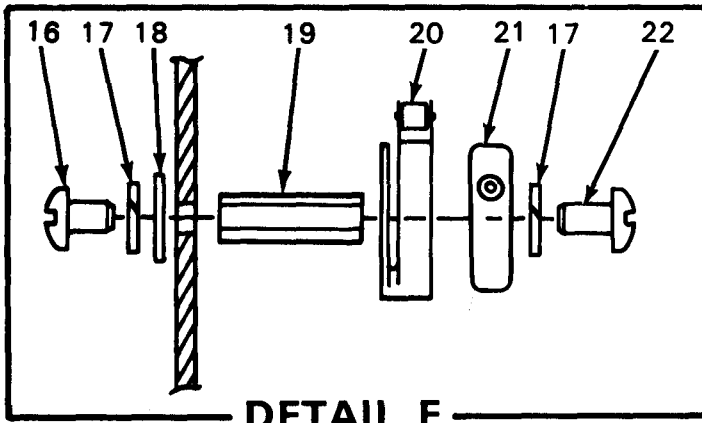
CEQAP0019

Figure 9. Chassis Assembly (Sheet 2 of 4)



CEQAP0020

Figure 9. Chassis Assembly (Sheet 3 of 4)



CEQAP0021

Figure 9. Chassis Assembly (Sheet 4 of 4)

(1) ITEM NO	(2) SMR CODE	(3) FSCM	(4) PART NUMBER	(5) DESCRIPTION AND USABLE ON CODE (UOC)	(6) QTY
GROUP 0201 CHASSIS ASSEMBLY					
FIGURE 9					
1	PAFZZ	80063	SM-C-456248	CONTROL SUBASSEMBLY	1
2	XBFZZ	80063	SM-C-456221	CHASSIS ASSEMBLY	1
3	PAFZZ	14730	3055	GROMMET, NONMETALLIC	1
4	PAFZZ	96906	MS-35338-135	WASHER, LOCK	28
5	PAFZZ	81348	MS51957-15	SCREW, MACHINE	8
6	PAFZZ	80063	SM-D-334399	CIRCUIT CARD ASSEMB	1
7	PAFZZ	80063	SM-D-456271	BOARD, ASSEMBLY	1
8	PAFZZ	08715	R-1602	FILTER, LOW PASS	3
9	PAFZZ	96906	MS35649- 44 2	NUT, PLAIN, HEXAGON	17
10	PAFZZ	80063	SM-C-456330	RELAY, ELECTROMAGNET	1
11	XBFZZ	91574	DH-026	TRANSFORMER, AF	1
12	PAFZZ	08715	W-5315	TRANSFORMER, AUDIO F	1
13	PAFZZ	96906	MS-51957-14	SCREW, MACHINE	1
14	PAFZZ	96906	MS-51957-13	SCREW, MACHINE	1
15	PAFZZ	08715	B-1196	FILTER, BAND PASS	1
16	PAFZZ	96906	MS51957-2	SCREW, MACHINE	2
17	PAFZZ	81349	MS35338-134	WASHER, LOCK	4
18	PAFZZ	88044	AN960C2L	WASHER, FLAT	2
19	PAFZZ	80063	SM-B-456240	NUT, PLAIN, HEXAGON	2
20	PAFZZ	91929	JS70	ACTUATOR	1
21	PAFZZ	91929	11SM1	SWITCH, SENSITIVE	1
22	PAFZZ	96906	MS51957-6	SCREW, MACHINE	2
23	PAFZZ	96906	MS-51957-17	SCREW, MACHINE	4
24	XBFZZ	75382	600C-Y-2	TERMINAL BLOCK	1

(1) ITEM NO	(2) SMR CODE	(3) FSCM	(4) PART NUMBER	(5) DESCRIPTION AND USABLE ON CODE (UOC)	(6) QTY
25	PAFZZ	09922	HP5N	CLAMP,CABLE	1
26	PAFZZ	96906	MS51957-28	SCREW,MACHINE	1
27	PAFZZ	96906	MS35338-136	WASHER,LOCK	1
28	PAFZZ	88044	AN960-C6	WASHER,FLAT	1
29	PAFZZ	96906	MS77068-1	TERMINAL,LUG	2
30	PAFZZ	96906	MS35333-87	WASHER,LOCK	2
31	PAFZZ	80063	SM-B-456249	SCREW,EXTERNALLY RE	4
32	PAFZZ	80063	SM-B-456300	WASHER,FLAT	8
33	PAFZZ	80063	SM-B-456344	WASHER,RETAINING	4

END OF FIGURE



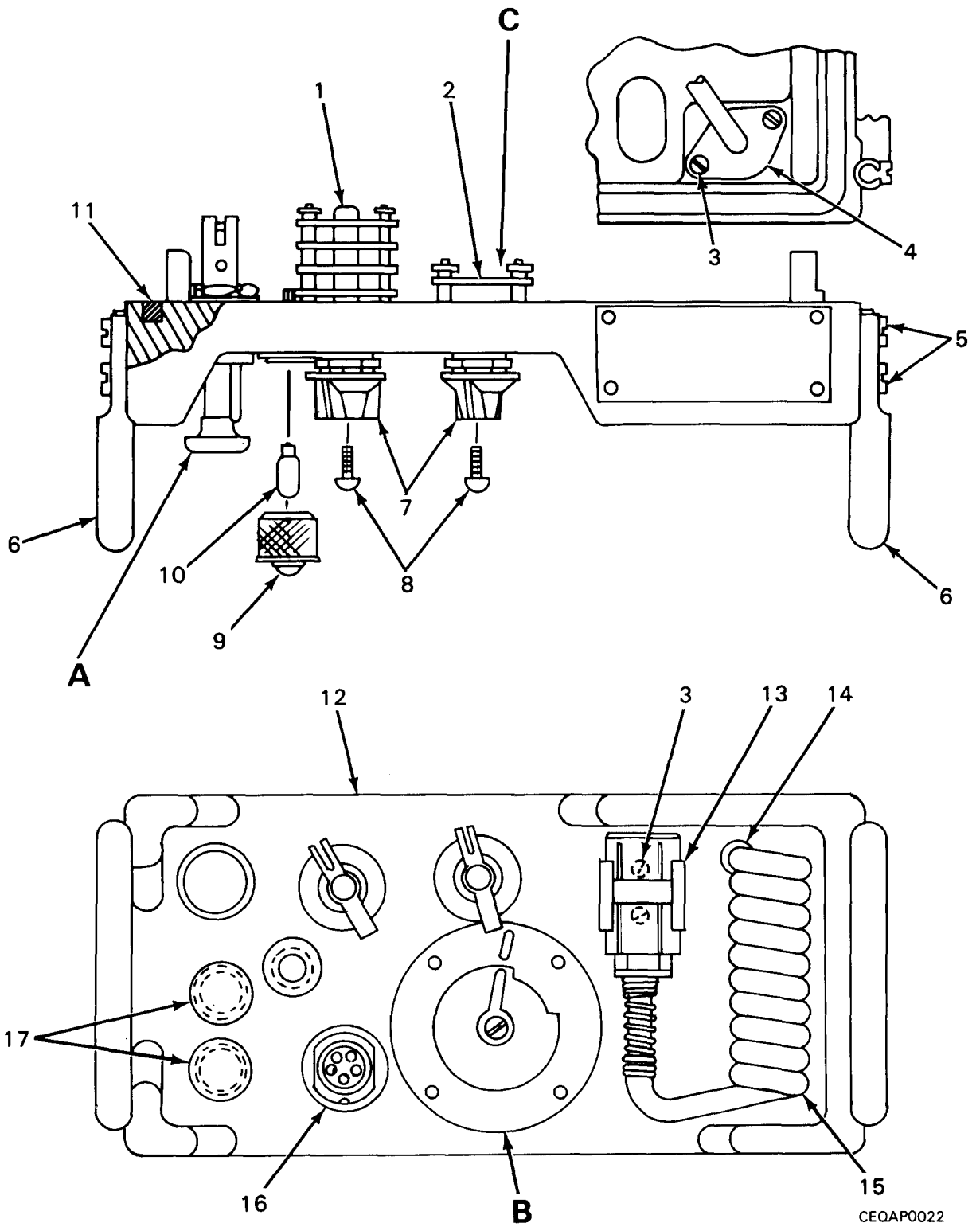


Figure 10. Panel Assembly (AN/GRA-39) (Sheet 1 of 2)

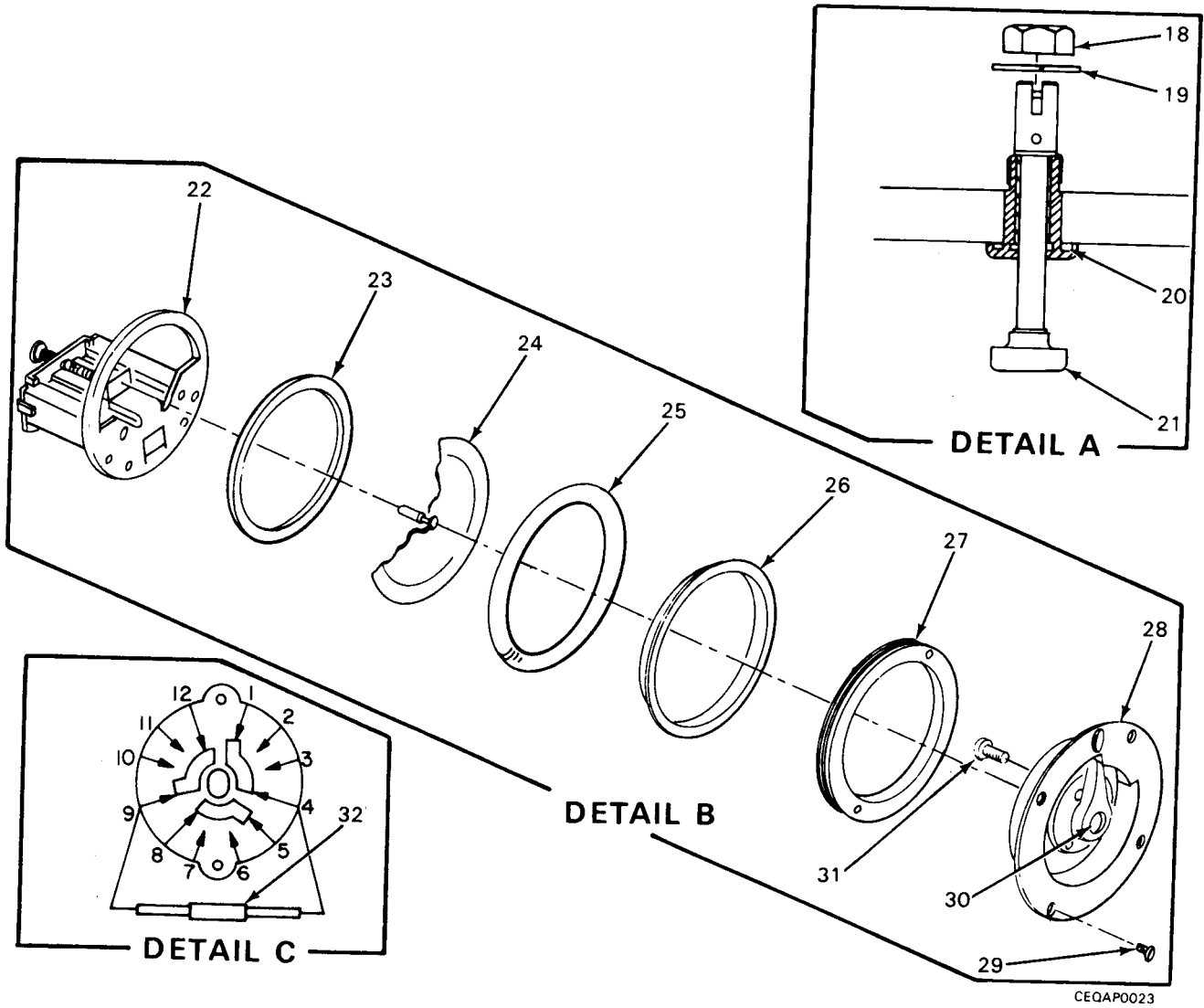
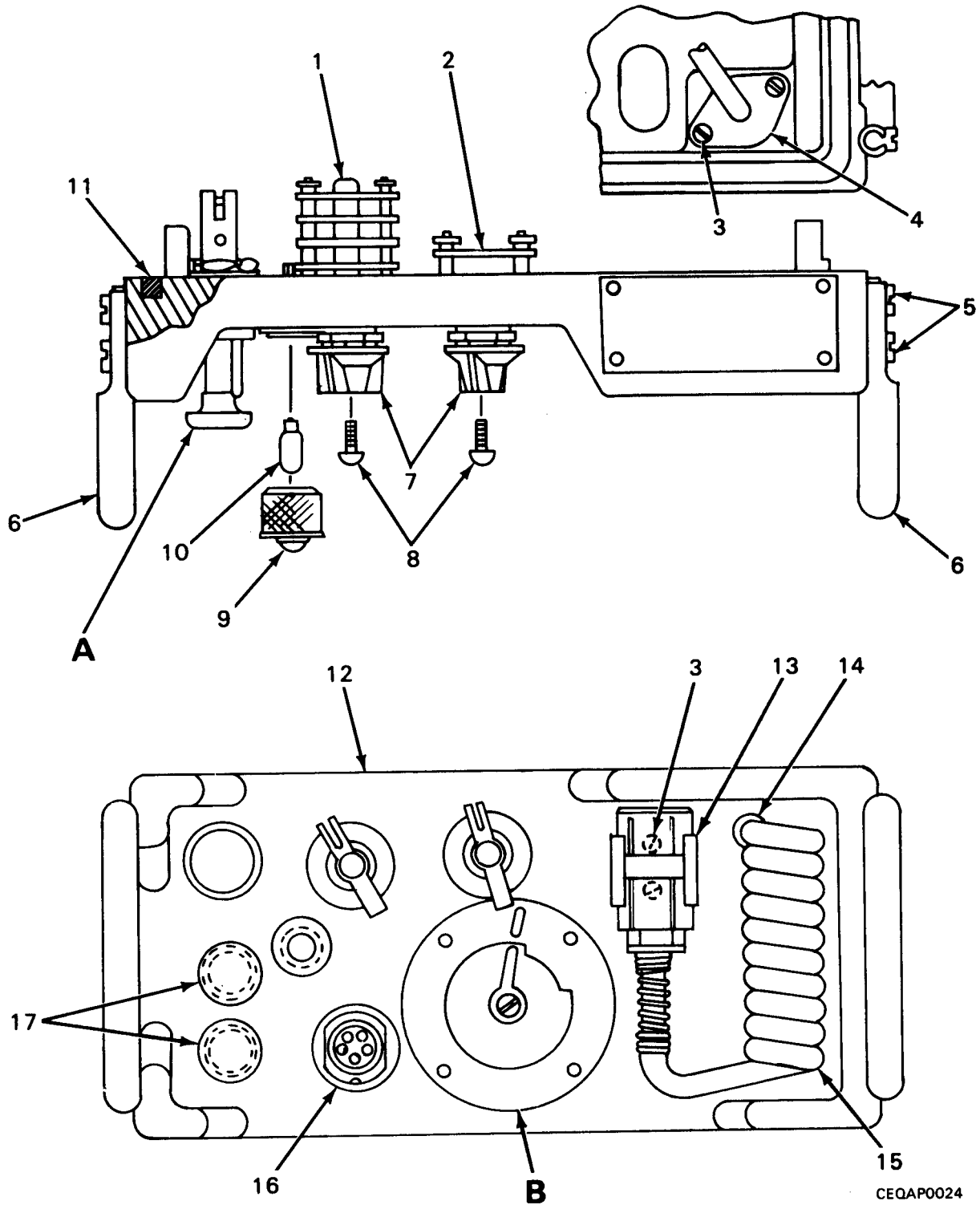


Figure 10. Panel Assembly (AN/GRA-39) (Sheet 2 of 2)

(1) ITEM NO	(2) SMR CODE	(3) FSCM	(4) PART NUMBER	(5) DESCRIPTION AND USABLE ON CODE (UOC)	(6) QTY
GROUP 0202 PANEL ASSEMBLY (AN/GRA-39)					
FIGURE 10					
1	PAFZZ	76854	226063-A1	SWITCH, ROTARY UOC: 3KP	1
2	PAFZZ	76854	226061-A2	SWITCH, ROTARY UOC: 3KP	1
3	PAFZZ	96906	MS-51957-13	SCREW, MACHINE UOC: 3KP	4
4	PAFZZ	80063	SM-B-456267	RETAINER UOC: 3KP	1
5	PAFZZ	96906	MS51957-46	SCREW, MACHINE UOC: 3KP	8
6	PAFZZ	80063	SM-B-456232	HANDLE BALL UOC: 3KP	2
7	PAOZZ	80063	SM-B-456374	KNOB UOC: 3KP	2
8	PAOZZ	89016	F36237-22	SCREW, MACHINE UOC: 3KP	2
9	PAOZZ	80063	SM-B-450166	HOUSING LAMP ASSY UOC: 3KP	1
10	PAOZZ	96906	MS25237-328	LAMP, INCANDESCENT UOC: 3KP	1
11	XDFZZ	80063	SM-B-456245	GASKET UOC: 3KP	1
12	PAFZZ	80063	SM-C-456209	PANEL, MONITOR UOC: 3KP	11
13	PAFZZ	80063	SM-B-456373	CLIP, SPRING TENSION UOC: 3KP	1
14	PAFZZ	80063	SM-B-456304	GROMMET, NONMETALLIC UOC: 3KP	1
15	PAFZZ	80063	SM-C-456303	CORD ASSEMBLY, ELECT UOC: 3KP	1
16	PAFZZ	80063	SM-B-415681	CONNECTOR, ASSEMBLY UOC: 3KP	1
17	PAFZZ	81349	PB08NA01	POST, BINDING, ELECTR UOC: 3KP	2
18	PAFZZ	80063	SM-B-456301	NUT, HEXAGON UOC: 3KP	1
19	PAFZZ	80063	SM-B-450153	WASHER, LOCK UOC: 3KP	1
20	PAFZZ	96906	MS9021-016	PACKING, PREFORMED UOC: 3KP	1
21	PAFZZ	80063	SM-B-456264	PLUNGER ASSEMBLY UOC: 3KP	1
22	XBFZZ	80063	SM-C-189369	BUZZER ASSEMBLY UOC: 3KP	1
23	PAFZZ	80063	SM-B-169019	SPACER, RING UOC: 3KP	1
24	PAFZZ	80063	SM-B-169007	DIAPHRAGM, EARPHONE	1

(1) ITEM NO	(2) SMR CODE	(3) FSCM	(4) PART NUMBER	(5) DESCRIPTION AND USABLE ON CODE (UOC)	(6) QTY
25	PAFZZ	81321	62309-14	UOC:3KP PACKING, PREFORMED	1
26	PAFZZ	80063	SM-B-169020	UOC:3KP RING, RETAINING	1
27	PAFZZ	80063	SM-B-169018	UOC:3KP NUT, PLAIN, ROUND	1
28	PAFZZ	80063	SM-C-168986	UOC:3KP COVER, MICROPHONE	1
29	PAFZZ	96906	MS35190-210	UOC:3KP SCREW, MACHINE	4
30	PAFZZ	96906	MS-51957-14	UOC:3KP SCREW, MACHINE	1
31	PAFZZ	96906	MS51021-10	UOC:3KP SETSCREW	1
32	PAFZZ	81349	RCR07G561JS	UOC:3KP RESISTOR, FIXED, COMP	1

END OF FIGURE



CEQAP0024

Figure 11. Panel Assembly (AN/GRA-39A, B, and C) (Sheet 1 of 2)

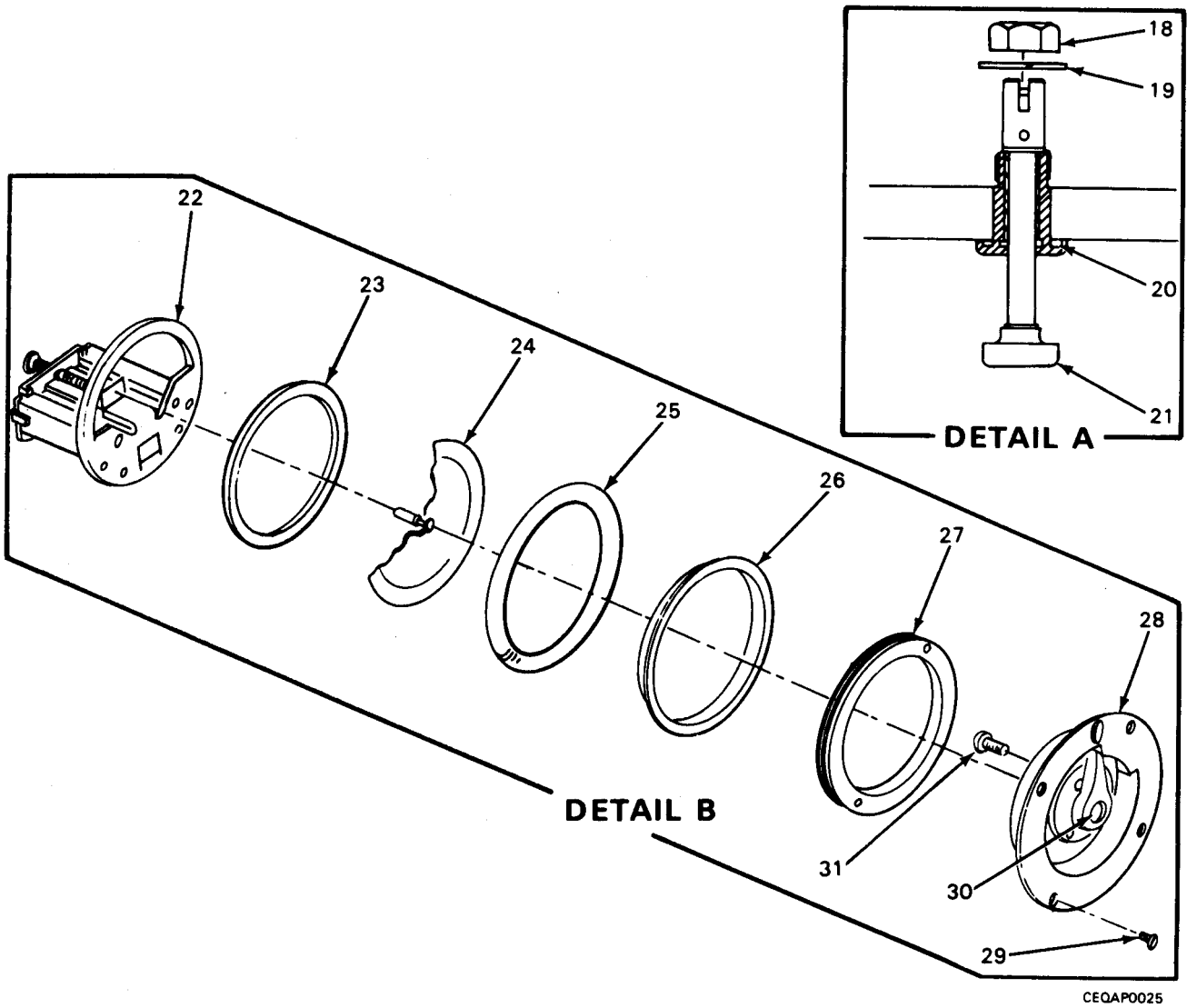


Figure 11. Panel Assembly (AN/GRA-39A, B, and C) (Sheet 2 of 2)

(1) ITEM NO	(2) SMR CODE	(3) FSCM	(4) PART NUMBER	(5) DESCRIPTION AND USABLE ON CODE (UOC)	(6) QTY
GROUP 0202 PANEL ASSEMBLY (AN/GRA-39A, B, AND C)					
FIGURE 11					
1	PAFZZ	80063	SM-C-456329	SWITCH, ROTARY UOC:AVZ, HDQ, 3KM	1
2	PAFZZ	76854	226063-A1	SWITCH, ROTARY UOC:AVZ, HDQ, 3KM	1
3	PAFZZ	96906	MS-51957-13	SCREW, MACHINE UOC:AVZ, HDQ, 3KM	4
4	PAFZZ	80063	SM-B-456267	RETAINER UOC:AVZ, HDQ, 3KM	1
5	PAFZZ	96906	MS51957-46	SCREW, MACHINE UOC:AVZ, HDQ, 3KM	8
6	PAFZZ	80063	SM-B-456232	HANDLE BALL UOC:AVZ, HDQ, 3KM	2
7	PAOZZ	80063	SM-B-456374	KNOB UOC:AVZ, HDQ, 3KM	2
8	PAOZZ	89016	F36237-22	SCREW, MACHINE UOC:AVZ, HDQ, 3KM	2
9	PAOZZ	80063	SM-B-450166	HOUSING LAMP ASSY UOC:AVZ, HDQ, 3KM	1
10	PAOZZ	96906	MS25237-328	LAMP, INCANDESCENT UOC:AVZ, HDQ, 3KM	1
11	XDFZZ	80063	SM-B-456245	GASKET UOC:AVZ, HDQ, 3KM	1
12	XAFZZ	80063	SM-C-450181	CHASSIS, ELECTRICAL UOC:AVZ, HDQ, 3KM	1
13	PAFZZ	80063	SM-B-456373	CLIP, SPRING TENSION UOC:AVZ, HDQ, 3KM	1
14	PAFZZ	80063	SM-B-456304	GROMMET, NONMETALLIC UOC:AVZ, HDQ, 3KM	1
15	PAFZZ	80063	SM-C-456303	CORD ASSEMBLY, ELECT UOC:AVZ, HDQ, 3KM	1
16	PAFZZ	80063	SM-C-415681	CONNECTOR, RECEPTACL UOC:AVZ, HDQ, 3KM	1
17	PAFZZ	81349	PB08NA01	POST, BINDING, ELECTR UOC:AVZ, HDQ, 3KM	2
18	PAFZZ	80063	SM-B-456301	NUT, HEXAGON UOC:AVZ, HDQ, 3KM	1
19	PAFZZ	80063	SM-B-450153	WASHER, LOCK UOC:AVZ, HDQ, 3KM	1
20	PAFZZ	96906	MS9021-016	PACKING, PREFORMED UOC:AVZ, HDQ, 3KM	1
21	PAFZZ	80063	SM-B-456264	PLUNGER ASSEMBLY UOC:AVZ, HDQ, 3KM	1
22	XBFZZ	80063	SM-C-189369	BUZZER ASSEMBLY UOC:AVZ, HDQ, 3KM	1
23	PAFZZ	80063	SM-B-169019	SPACER, RING UOC:AVZ, HDQ, 3KM	1
24	PAFZZ	80063	SM-B-169007	DIAPHRAGM, EARPHONE	1

(1) ITEM NO	(2) SMR CODE	(3) FSCM	(4) PART NUMBER	(5) DESCRIPTION AND USABLE ON CODE (UOC)	(6) QTY
25	PAFZZ	81321	62309-14	UOC:AVZ,HDQ,3KM PACKING,PREFORMED	1
26	PAFZZ	80063	SM-B-169020	UOC:AVZ,HDQ,3KM RING,RETAINING	1
27	PAFZZ	80063	SM-B-169018	UOC:AVZ,HDQ,3KM NUT,PLAIN,ROUND	1
28	PAFZZ	80063	SM-C-168986	UOC:AVZ,HDQ,3KM COVER,MICROPHONE	1
29	PAFZZ	96906	MS35190-210	UOC:AVZ,HDQ,3KM SCREW,MACHINE	4
30	PAFZZ	96906	MS-51957-14	UOC:AVZ,HDQ,3KM SCREW,MACHINE	1
31	PAFZZ	96906	MS51021-10	UOC:AVZ,HDQ,3KM SETSCREW	1
				UOC:AVZ,HDQ,3KM	
				END OF FIGURE	



## CROSS-REFERENCE INDEXES

## NATIONAL STOCK NUMBER INDEX

STOCK NUMBER	FIG.	ITEM	STOCK NUMBER	FIG.	ITEM
5340-00-007-6040	9	25	5305-00-054-6671	11	5
5965-00-043-3463	1	3	5940-00-082-4897	6	3
	1	3	5905-00-105-7768	10	32
	1	3	5820-00-131-1945	9	6
5310-00-045-5203	8	16	6240-00-155-7857	6	13
5305-00-050-9229	5	15		10	10
5305-00-054-5636	4	19		11	10
	9	16	5965-00-168-9615	5	27
5305-00-054-5640	4	25		6	27
	9	22		10	24
5305-00-054-5644	5	13		11	24
5305-00-054-5647	4	14	5330-00-171-6649	5	28
	9	14		6	28
	10	3		10	25
	11	3		11	25
5305-00-054-5648	4	13	5310-00-183-4354	4	21
	6	33		9	18
	9	13	5305-00-253-5604	3	9
	10	30		5	5
	11	30		8	8
5305-00-054-5649	4	7	5325-00-281-6606	4	5
	9	5		9	3
5305-00-054-5651	4	9	5340-00-286-4179	2	12
	9	23		3	13
5305-00-054-6649	2	13		8	17
	3	14	5310-00-531-9514	4	28
	7	17		7	15
	8	18		9	28
5305-00-054-6650	2	3	5310-00-549-8351	5	22
	3	2		6	22
	6	10	5930-00-583-6582	4	24
	7	3		9	21
	8	2	5330-00-584-0266	5	4
	10	8		6	4
	11	8	5330-00-584-1231	5	23
5305-00-054-6651	2	8		6	23
	3	7		10	20
	5	32		11	20
	7	9	5310-00-595-6211	4	33
	8	7		9	32
5305-00-054-6652	4	26	5305-00-655-9246	6	31
	7	13		10	31
	8	14		11	31
	9	26	5940-00-682-2477	4	30
5305-00-054-6654	2	5		9	29
	3	4	6350-00-698-0417	5	25
	7	5	5965-00-698-0423	5	31
	8	4		6	32
5305-00-054-6671	6	15		10	28
	10	5		11	28

## CROSS-REFERENCE INDEXES

## NATIONAL STOCK NUMBER INDEX

STOCK NUMBER	FIG.	ITEM	STOCK NUMBER	FIG.	ITEM
5305-00-764-0071	5	18	5330-00-973-1475	5	7
	6	18		6	7
5935-00-823-0667	5	19	5950-00-973-1868	4	12
	6	19	5820-00-976-4597	4	11
	11	16	5340-00-976-4599	10	13
5930-00-825-5244	4	23		11	13
	9	20	5820-00-976-4602	4	2
5905-00-889-0300	5	2		9	1
	6	2	5365-00-976-4625	2	6
5995-00-889-1074	10	15		3	5
	11	15		7	6
5820-00-889-3856	1	5		8	5
5950-00-892-8117	4	17	5945-00-976-9289	4	18
	9	12		9	10
5305-00-926-5571	4	32	5930-00-976-9290	10	2
	9	31		11	1
5310-00-928-2690	4	20	5930-00-977-0990	10	1
	9	17		11	2
5310-00-929-6395	2	14	5930-00-977-0991	5	1
	3	15		6	1
	4	27	5820-00-977-5609	9	7
	7	14	5950-00-977-5635	4	15
	8	15	5305-00-990-1347	5	33
	9	27	5965-00-999-4334	6	9
6135-00-930-0030	1	3A	5820-01-010-4941	5	24
5325-00-930-6121	10	14		6	24
	11	14		10	21
5310-00-933-8118	4	6		11	21
	9	4	5340-01-020-5068	2	4
5310-00-934-9748	4	8		3	3
	9	9		7	8
5940-00-937-5237	5	20		8	6
	6	20	5965-01-058-9785	5	9
	10	17		6	8
	11	17	6135-01-087-2129	2	10
5820-00-949-9907	1	1		3	12
	1	1		7	7
	1	1		8	12
5820-00-949-9908	1	2	5365-01-098-4676	5	29
	1	2		6	29
	1	2		10	26
5915-00-950-4292	9	15		11	26
5915-00-950-4307	4	16	5365-01-098-4695	5	26
	9	8		6	26
5910-00-951-0958	4	4		10	23
5305-00-957-6263	6	34		11	23
	10	29	5820-01-100-0240	5	14
	11	29		6	14
5330-00-973-1474	5	10		10	6
	6	5		11	6

## CROSS-REFERENCE INDEXES

## NATIONAL STOCK NUMBER INDEX

STOCK NUMBER	FIG.	ITEM	STOCK NUMBER	FIG.	ITEM
5310-01-100-8467	5	30			
	6	30			
	10	27			
	11	27			
5340-01-116-0760	4	29			
5340-01-121-0482	7	12			
	8	13			
5820-01-139-0345	7	1			
	8	1			
6240-01-140-2970	6	12			
	10	9			
	11	9			
5820-01-140-4453	10	12			
5820-01-142-2550	2	7			
	7	4			
5365-01-145-3276	5	11			
	6	6			
5355-01-147-1298	5	12			
	6	11			
	10	7			
	11	7			
5310-01-157-0892	4	22			
	9	19			
5820-01-157-1691	3	1			
5340-01-157-2100	1	4			
	1	4			
	1	4			
5310-01-165-2474	4	34			
	9	33			
5820-01-175-3205	3	6			
	8	3			
5820-01-196-6300	1	1			
5820-01-198-6444	1	2			
5999-01-254-7851	10	4			
	11	4			

## CROSS-REFERENCE INDEXES

FSCM	PART NUMBER	PART NUMBER INDEX		FIG.	ITEM
		STOCK NUMBER			
88044	AN526C632-5	5305-00-054-6651		5	32
88044	AN535-00-3	5305-00-253-5604		8	8
88044	AN960-C6	5310-00-531-9514		4	28
				7	15
				9	28
88044	AN960C2L	5310-00-183-4354		4	21
				9	18
08715	B-1196	5915-00-950-4292		9	15
71590	BAS842-004	5905-00-889-0300		5	2
				6	2
80058	BA3030/U	6135-00-930-0030		1	3A
80058	C-2328/GRA-39	5820-00-949-9907		1	1
80058	C-2328A/GRA-39	5820-00-949-9907		1	1
80058	C-2328B/GRA-39	5820-00-949-9907		1	1
80058	C-2328C/GRA-39	5820-01-196-6300		1	1
80058	C-2329/GRA-39	5820-00-949-9908		1	2
80058	C-2329A/GRA-39	5820-00-949-9908		1	2
80058	C-2329B/GRA-39	5820-00-949-9908		1	2
80058	C-2329C/GRA-39	5820-01-198-6444		1	2
80058	CW-598/GRA-39	5820-00-889-3856		1	5
91574	DH-026			9	11
89016	F36237-20	5305-00-054-6654		2	5
				3	4
				7	5
				8	4
89016	F36237-22	5305-00-054-6650		2	3
				3	2
				6	10
				7	3
				8	2
				10	8
				11	8
80058	H-250A/U	5965-00-043-3463		1	3
				1	3
				1	3
09922	HP-4N	5340-01-121-0482		7	12
				8	13
09922	HP-6N	5340-01-116-0760		4	29
09922	HP5N	5340-00-007-6040		9	25
91929	JS-70	5930-00-825-5244		4	23
91929	JS70	5930-00-825-5244		9	20
96906	MS-35338-135	5310-00-933-8118		4	6
				9	4
96906	MS-51957-13	5305-00-054-5647		9	14
				10	3
				11	3
96906	MS-51957-14	5305-00-054-5648		4	13
				6	33
				9	13
				10	30
				11	30

## CROSS-REFERENCE INDEXES

FSCM	PART NUMBER	PART NUMBER INDEX		FIG.	ITEM
		STOCK	NUMBER		
96906	MS-51957-17	5305-00-054-5651		4	9
				9	23
96906	MS15795-905	5310-00-045-5203		8	16
96906	MS21318-2	5305-00-253-5604		3	9
96906	MS25237-328	6240-00-155-7857		6	13
				10	10
				11	10
96906	MS28775-010	5330-00-584-0266		5	4
96906	MS35190-210	5305-00-957-6263		6	4
				6	34
				10	29
				11	29
96906	MS35190-292	5305-00-990-1347		5	33
96906	MS35233-25	5305-00-054-6649		2	13
				3	14
				7	17
				8	18
				4	31
96906	MS35333-87			9	30
81349	MS35338-134	5310-00-928-2690		4	20
				9	17
96906	MS35338-136	5310-00-929-6395		2	14
				3	15
				4	27
				7	14
				8	15
				9	27
96906	MS35649- 44 2	5310-00-934-9748		4	8
				9	9
96906	MS51021-10	5305-00-655-9246		6	31
				10	31
				11	31
				5	13
96906	MS51957-11	5305-00-054-5644		4	14
96906	MS51957-13	5305-00-054-5647		4	7
81348	MS51957-15	5305-00-054-5649		9	5
96906	MS51957-2	5305-00-054-5636		4	19
				9	16
81348	MS51957-27	5305-00-054-6651		2	8
				3	7
				7	9
				8	7
				4	26
96906	MS51957-28	5305-00-054-6652		7	13
				8	14
				9	26
				6	15
96906	MS51957-46	5305-00-054-6671		10	5
				11	5
				4	25
96906	MS51957-6	5305-00-054-5640		9	22

## CROSS-REFERENCE INDEXES

FSCM	PART NUMBER	PART NUMBER INDEX		FIG.	ITEM
		STOCK	NUMBER		
96906	MS51957-63	5305-00-050-9229		5	15
96906	MS51959-47	5305-00-764-0071		5	18
				6	18
96906	MS77068-1	5940-00-682-2477		4	30
				9	29
96906	MS9021-016	5330-00-584-1231		5	23
				6	23
				10	20
				11	20
81349	M12606-01	5965-01-058-9785		5	9
				6	8
81349	PB08NA01	5940-00-937-5237		5	20
				6	20
				10	17
				11	17
00656	P123ZN913	5910-00-951-0958		4	4
08715	R-1602	5915-00-950-4307		4	16
				9	8
81349	RCR07G561JS	5905-00-105-7768		10	32
88240	SC-B-83314-42CE	5340-01-020-5068		2	4
				3	3
				7	8
				8	6
80063	SM-B-169007	5965-00-168-9615		5	27
				6	27
				10	24
				11	24
80063	SM-B-169018	5310-01-100-8467		5	30
				6	30
				10	27
				11	27
80063	SM-B-169019	5365-01-098-4695		5	26
				6	26
				10	23
				11	23
80063	SM-B-169020	5365-01-098-4676		5	29
				6	29
				10	26
				11	26
80063	SM-B-415681			10	16
80063	SM-B-450153			10	19
				11	19
80063	SM-B-450161			3	11
				8	11
80063	SM-B-450166	6240-01-140-2970		6	12
				10	9
				11	9
80063	SM-B-454823	5965-00-999-4334		6	9
80063	SM-B-456232	5820-01-100-0240		5	14
				6	14
				10	6

## CROSS-REFERENCE INDEXES

FSCM	PART NUMBER	PART NUMBER INDEX		FIG.	ITEM
		STOCK NUMBER			
80063	SM-B-456232	5820-01-100-0240		11	6
80063	SM-B-456234			5	8
80063	SM-B-456236	5330-00-973-1474		5	10
				6	5
80063	SM-B-456237	5330-00-973-1475		5	7
				6	7
80063	SM-B-456238	5365-01-145-3276		5	11
				6	6
80063	SM-B-456240	5310-01-157-0892		4	22
				9	19
80063	SM-B-456245			5	16
				6	16
				10	11
				11	11
80063	SM-B-456249	5305-00-926-5571		4	32
				9	31
80063	SM-B-456264	5820-01-010-4941		5	24
				6	24
				10	21
				11	21
80063	SM-B-456267	5999-01-254-7851		10	4
				11	4
80063	SM-B-456297	5365-00-976-4625		2	6
				3	5
				7	6
				8	5
80063	SM-B-456300	5310-00-595-6211		4	33
				9	32
80063	SM-B-456301			5	21
				6	21
				10	18
				11	18
80063	SM-B-456304	5325-00-930-6121		10	14
				11	14
80063	SM-B-456343			5	6
80063	SM-B-456344	5310-01-165-2474		4	34
				9	33
80063	SM-B-456373	5340-00-976-4599		10	13
				11	13
80063	SM-B-456374	5355-01-147-1298		5	12
				6	11
				10	7
				11	7
80063	SM-C-168986	5965-00-698-0423		5	31
				6	32
				10	28
				11	28
80063	SM-C-168992	6350-00-698-0417		5	25
80063	SM-C-189369			6	25
				10	22
				11	22

## CROSS-REFERENCE INDEXES

FSCM	PART NUMBER	PART NUMBER INDEX		FIG.	ITEM
		STOCK NUMBER			
80063	SM-C-334390			3	8
80063	SM-C-334391			8	9
80063	SM-C-415681	5935-00-823-0667		6	19
				11	16
80063	SM-C-450181			11	12
80063	SM-C-450188			6	17
80063	SM-C-456209	5820-01-140-4453		10	12
80063	SM-C-456215	6135-01-087-2129		2	10
				3	12
				7	7
				8	12
80063	SM-C-456218			5	17
80063	SM-C-456221			9	2
80063	SM-C-456227			4	3
80063	SM-C-456248	5820-00-976-4602		4	2
				9	1
80063	SM-C-456303	5995-00-889-1074		10	15
				11	15
80063	SM-C-456309	5340-01-157-2100		1	4
				1	4
				1	4
80063	SM-C-456329	5930-00-976-9290		11	1
80063	SM-C-456330	5945-00-976-9289		4	18
				9	10
80063	SM-C-456337	5930-00-977-0991		5	1
				6	1
80063	SM-D-334399	5820-00-131-1945		9	6
80063	SM-D-450173	5820-01-157-1691		3	1
80063	SM-D-450174	5820-01-139-0345		7	1
				8	1
80063	SM-D-450177			8	10
80063	SM-D-450178-10			3	10
80063	SM-D-450187	5820-01-175-3205		3	6
				8	3
80063	SM-D-456202-2			7	16
80063	SM-D-456202-3			7	2
80063	SM-D-456203-2			2	2
80063	SM-D-456220			7	11
80063	SM-D-456226			2	9
80063	SM-D-456235	5820-01-142-2550		2	7
				7	4
80063	SM-D-456244			2	1
80063	SM-D-456244-4	5305-00-253-5604		5	5
80063	SM-D-456271	5820-00-977-5609		9	7
80063	SM-D-456281			4	10
80063	SM-D-456286	5820-00-976-4597		4	11
80063	SM-D-456293			2	11
80063	SM-D-456294			7	10
80058	U-183/U	5935-00-823-0667		5	19
08715	W-5315	5950-00-892-8117		4	17
				9	12



## CROSS-REFERENCE INDEXES

FSCM	PART NUMBER	PART NUMBER INDEX STOCK NUMBER	FIG.	ITEM
08715	W-5317	5950-00-973-1868	4	12
08715	W5316	5950-00-977-5635	4	15
71279	X-1990		5	3
71785	1066	5340-00-286-4179	2	12
			3	13
			8	17
91929	11SM1	5930-00-583-6582	4	24
			9	21
78189	1224-06-00-0542B	5310-00-549-8351	5	22
			6	22
76854	226061-A2	5930-00-976-9290	10	2
76854	226063-A1	5930-00-977-0990	10	1
			11	2
14370	3055	5325-00-281-6606	4	5
			9	3
71279	570-1990-01-05-0 0	5940-00-082-4897	6	3
75382	600C-Y-2		4	1
			9	24
81321	62309-14	5330-00-171-6649	5	28
			6	28
			10	25
			11	25

## CROSS-REFERENCE INDEXES

FIGURE AND ITEM NUMBER INDEX				
FIG.	ITEM	STOCK NUMBER	FSCM	PART NUMBER
1	1	5820-00-949-9907	80058	C-2328/GRA-39
1	1	5820-00-949-9907	80058	C2328A/GRA-39
1	1	5820-00-949-9907	80058	C-2328B/GRA-39
1	1	5820-01-196-6300	80058	C-2328C/GRA-39
1	2	5820-00-949-9908	80058	C-2329/GRA-39
1	2	5820-00-949-9908	80058	C-2329A/GRA-39
1	2	5820-00-949-9908	80058	C-2329B/GRA-39
1	2	5820-01-198-6444	80058	C-2329C/GRA-39
1	3	5965-00-043-3463	80058	H-250A/U
1	3	5965-00-043-3463	80058	H-250A/U
1	3	5965-00-043-3463	80058	H-250A/U
1	3A	6135-00-930-0030	80058	BA3030/U
1	4	5340-01-157-2100	80063	SM-C-456309
1	4	5340-01-157-2100	80063	SM-C-456309
1	4	5340-01-157-2100	80063	SM-C-456309
1	5	5820-00-889-3856	80058	CW-598/GRA-39
2	1		80063	SM-D-456244
2	2		80063	SM-D-456203-2
2	3	5305-00-054-6650	89016	F36237-22
2	4	5340-01-020-5068	88240	SC-B-83314-42CE
2	5	5305-00-054-6654	89016	F36237-20
2	6	5365-00-976-4625	80063	SM-B-456297
2	7	5820-01-142-2550	80063	SM-D-456235
2	8	5305-00-054-6651	81348	MS51957-27
2	9		80063	SM-D-456226
2	10	6135-01-087-2129	80063	SM-C-456215
2	11		80063	SM-D-456293
2	12	5340-00-286-4179	71785	1066
2	13	5305-00-054-6649	96906	MS35233-25
2	14	5310-00-929-6395	96906	MS35338-136
3	1	5820-01-157-1691	80063	SM-D-450173
3	2	5305-00-054-6650	89016	F36237-22
3	3	5340-01-020-5068	88240	SC-B-83314-42CE
3	4	5305-00-054-6654	89016	F36237-20
3	5	5365-00-976-4625	80063	SM-B-456297
3	6	5820-01-175-3205	80063	SM-D-450187
3	7	5305-00-054-6651	81348	MS51957-27
3	8		80063	SM-C-334390
3	9	5305-00-253-5604	96906	MS21318-2
3	10		80063	SM-D-450178-10
3	11		80063	SM-B-450161
3	12	6135-01-087-2129	80063	SM-C-456215
3	13	5340-00-286-4179	71785	1066
3	14	5305-00-054-6649	96906	MS35233-25
3	15	5310-00-929-6395	96906	MS35338-136
4	1		75382	600C-Y-2
4	2	5820-00-976-4602	80063	SM-C-456248
4	3		80063	SM-C-456227
4	4	5910-00-951-0958	00656	P123ZN913
4	5	5325-00-281-6606	14370	3055
4	6	5310-00-933-8118	96906	MS-35338-135

## CROSS-REFERENCE INDEXES

FIG.	ITEM	FIGURE AND ITEM NUMBER INDEX		
		STOCK NUMBER	FSCM	PART NUMBER
4	7	5305-00-054-5649	81348	MS51957-15
4	8	5310-00-934-9748	96906	MS35649- 44 2
4	9	5305-00-054-5651	96906	MS-51957-17
4	10		80063	SM-D-456281
4	11	5820-00-976-4597	80063	SM-D-456286
4	12	5950-00-973-1868	08715	W-5317
4	13	5305-00-054-5648	96906	MS-51957-14
4	14	5305-00-054-5647	96096	MS51957-13
4	15	5950-00-977-5635	08715	W5316
4	16	5915-00-950-4307	08715	R-1602
4	17	5950-00-892-8117	08715	W-5315
4	18	5945-00-976-9289	80063	SM-C-456330
4	19	5305-00-054-5636	96096	MS51957-2
4	20	5310-00-928-2690	81349	MS35338-134
4	21	5310-00-183-4354	88044	AN960C2L
4	22	5310-01-157-0892	80063	SM-B-456240
4	23	5930-00-825-5244	91929	JS-70
4	24	5930-00-583-6582	91929	11SM1
4	25	5305-00-054-5640	96906	MS51957-6
4	26	5305-00-054-6652	96906	MS51957-28
4	27	5310-00-929-6395	96906	MS35338-136
4	28	5310-00-531-9514	88044	AN960-C6
4	29	5340-01-116-0760	09922	HP-6N
4	30	5940-00-682-2477	96906	MS77068-1
4	31		96906	MS35333-87
4	32	5305-00-926-5571	80063	SM-B-456249
4	33	5310-00-595-6211	80063	SM-B-456300
4	34	5310-01-165-2474	80063	SM-B-456344
5	1	5930-00-977-0991	80063	SM-C-456337
5	2	5905-00-889-0300	71590	BAS842-004
5	3		71279	X-1990
5	4	5330-00-584-0266	96906	MS28775-010
5	5	5305-00-253-5604	80063	SM-D-456244-4
5	6		80063	SM-B-456343
5	7	5330-00-973-1475	80063	SM-B-456237
5	8		80063	SM-B-456234
5	9	5965-01-058-9785	81349	M12606-01
5	10	5330-00-973-1474	80063	SM-B-456236
5	11	5365-01-145-3276	80063	SM-B-456238
5	12	5355-01-147-1298	80063	SM-B-456374
5	13	5305-00-054-5644	96906	MS51957-11
5	14	5820-01-100-0240	80063	SM-B-456232
5	15	5305-00-050-9229	96906	MS51957-63
5	16		80063	SM-B-456245
5	17		80063	SM-C-456218
5	18	5305-00-764-0071	96906	MS51959-47
5	19	5935-00-823-0667	80058	U-183/U
5	20	5940-00-937-5237	81349	PB08NA01
5	21		80063	SM-B-456301
5	22	5310-00-549-8351	78189	1224-06-00-0542B
5	23	5330-00-584-1231	96906	MS9021-016

## CROSS-REFERENCE INDEXES

FIGURE AND ITEM NUMBER INDEX				
FIG.	ITEM	STOCK NUMBER	FSCM	PART NUMBER
5	24	5820-01-010-4941	80063	SM-B-456264
5	25	6350-00-698-0417	80063	SM-C-168992
5	26	5365-01-098-4695	80063	SM-B-169019
5	27	5965-00-168-9615	80063	SM-B-169007
5	28	5330-00-171-6649	81321	62309-14
5	29	5365-01-098-4676	80063	SM-B-169020
5	30	5310-01-100-8467	80063	SM-B-169018
5	31	5965-00-698-0423	80063	SM-C-168986
5	32	5305-00-054-6651	88044	AN526C632-5
5	33	5305-00-990-1347	96906	MS35190-292
6	1	5930-00-977-0991	80063	SM-C-456337
6	2	5905-00-889-0300	71590	BAS842-004
6	3	5940-00-082-4897	71279	570-1990-01-05-0 0
6	4	5330-00-584-0266	96906	MS28775-010
6	5	5330-00-973-1474	80063	SM-B-456236
6	6	5365-01-145-3276	80063	SM-B-456238
6	7	5330-00-973-1475	80063	SM-B-456237
6	8	5965-01-058-9785	81349	M12606-01
6	9	5965-00-999-4334	80063	SM-B-454823
6	10	5305-00-054-6650	89016	F36237-22
6	11	5355-01-147-1298	80063	SM-B-456374
6	12	6240-01-140-2970	80063	SM-B-450166
6	13	6240-00-155-7857	96906	MS25237-328
6	14	5820-01-100-0240	80063	SM-B-456232
6	15	5305-00-054-6671	96906	MS51957-46
6	16		80063	SM-B-456245
6	17		80063	SM-C-450188
6	18	5305-00-764-0071	96906	MS51959-47
6	19	5935-00-823-0667	80063	SM-C-415681
6	20	5940-00-937-5237	81349	PB08NA01
6	21		80063	SM-B-456301
6	22	5310-00-549-8351	78189	1224-06-00-0542B
6	23	5330-00-584-1231	96906	MS9021-016
6	24	5820-01-010-4941	80063	SM-B-456264
6	25		80063	SM-C-189369
6	26	5365-01-098-4695	80063	SM-B-169019
6	27	5965-00-168-9615	80063	SM-B-169007
6	28	5330-00-171-6649	81321	62309-14
6	29	5365-01-098-4676	80063	SM-B-169020
6	30	5310-01-100-8467	80063	SM-B-169018
6	31	5305-00-655-9246	96906	MS51021-10
6	32	5965-00-698-0423	80063	SM-C-168986
6	33	5305-00-054-5648	96906	MS-51957-14
6	34	5305-00-957-6263	96906	MS35190-210
7	1	5820-01-139-0345	80063	SM-D-450174
7	2		80063	SM-D-456202-3
7	3	5305-00-054-6650	89016	F36237-22
7	4	5820-01-142-2550	80063	SM-D-456235
7	5	5305-00-054-6654	89016	F36237-20
7	6	5365-00-976-4625	80063	SM-B-456297

## CROSS-REFERENCE INDEXES

FIGURE AND ITEM NUMBER INDEX				
FIG.	ITEM	STOCK NUMBER	FSCM	PART NUMBER
7	7	6135-01-087-2129	80063	SM-C-456215
7	8	5340-01-020-5068	88240	SC-B-83314-42CE
7	9	5305-00-054-6651	81348	MS51957-27
7	10		80063	SM-D-456294
7	11		80063	SM-D-456220
7	12	5340-01-121-0482	09922	HP-4N
7	13	5305-00-054-6652	96906	MS51957-28
7	14	5310-00-929-6395	96906	MS35338-136
7	15	5310-00-531-9514	88044	AN960-C6
7	16		80063	SM-D-456202-2
7	17	5305-00-054-6649	96906	MS35233-25
8	1	5820-01-139-0345	80063	SM-D-450174
8	2	5305-00-054-6650	89016	F36237-22
8	3	5820-01-175-3205	80063	SM-D-450187
8	4	5305-00-054-6654	89016	F36237-20
8	5	5365-00-976-4625	80063	SM-B-456297
8	6	5340-01-020-5068	88240	SC-B-83314-42CE
8	7	5305-00-054-6651	81348	MS51957-27
8	8	5305-00-253-5604	88044	AN535-00-3
8	9		80063	SM-C-334391
8	10		80063	SM-D-450177
8	11		80063	SM-B-450161
8	12	6135-01-087-2129	80063	SM-C-456215
8	13	5340-01-121-0482	09922	HP-4N
8	14	5305-00-054-6652	96906	MS51957-28
8	15	5310-00-929-6395	96906	MS35338-136
8	16	5310-00-045-5203	96906	MS15795-905
8	17	5340-00-286-4179	71785	1066
8	18	5305-00-054-6649	96906	MS35233-25
9	1	5820-00-976-4602	80063	SM-C-456248
9	2		80063	SM-C-456221
9	3	5325-00-281-6606	14370	3055
9	4	5310-00-933-8118	96906	MS-35338-135
9	5	5305-00-054-5649	81348	MS51957-15
9	6	5820-00-131-1945	80063	SM-D-334399
9	7	5820-00-977-5609	80063	SM-D-456271
9	8	5915-00-950-4307	08715	R-1602
9	9	5310-00-934-9748	96906	MS35649- 44 2
9	10	5945-00-976-9289	80063	SM-C-456330
9	11		91574	DH-026
9	12	5950-00-892-8117	08715	W-5315
9	13	5305-00-054-5648	96906	MS-51957-14
9	14	5305-00-054-5647	96906	MS-51957-13
9	15	5915-00-950-4292	08715	B-1196
9	16	5305-00-054-5636	96906	MS51957-2
9	17	5310-00-928-2690	81349	MS35338-134
9	18	5310-00-183-4354	88044	AN960C2L
9	19	5310-01-157-0892	80063	SM-B-456240
9	20	5930-00-825-5244	91929	JS70
9	21	5930-00-583-6582	91929	11SM1
9	22	5305-00-054-5640	96906	MS51957-6

## CROSS-REFERENCE INDEXES

FIG.	ITEM	FIGURE AND ITEM NUMBER INDEX		
		STOCK NUMBER	FSCM	PART NUMBER
9	23	5305-00-054-5651	96906	MS-51957-17
9	24		75382	600C-Y-2
9	25	5340-00-007-6040	09922	HP5N
9	26	5305-00-054-6652	96906	MS51957-28
9	27	5310-00-929-6395	96906	MS35338-136
9	28	5310-00-531-9514	88044	AN960-C6
9	29	5940-00-682-2477	96906	MS77068-1
9	30		96906	MS35333-87
9	31	5305-00-926-5571	80063	SM-B-456249
9	32	5310-00-595-6211	80063	SM-B-456300
9	33	5310-01-165-2474	80063	SM-B-456344
10	1	5930-00-977-0990	76854	226063-A1
10	2	5930-00-976-9290	76854	226061-A2
10	3	5305-00-054-5647	96906	MS-51957-13
10	4	5999-01-254-7851	80063	SM-B-456267
10	5	5305-00-054-6671	96906	MS51957-46
10	6	5820-01-100-0240	80063	SM-B-456232
10	7	5355-01-147-1298	80063	SM-B-456374
10	8	5305-00-054-6650	89016	F36237-22
10	9	6240-01-140-2970	80063	SM-B-450166
10	10	6240-00-155-7857	96906	MS25237-328
10	11		80063	SM-B-456245
10	12	5820-01-140-4453	80063	SM-C-456209
10	13	5340-00-976-4599	80063	SM-B-456373
10	14	5325-00-930-6121	80063	SM-B-456304
10	15	5995-00-889-1074	80063	SM-C-456303
10	16		80063	SM-B-415681
10	17	5940-00-937-5237	81349	PB08NA01
10	18		80063	SM-B-456301
10	19		80063	SM-B-450153
10	20	5330-00-584-1231	96906	MS9021-016
10	21	5820-01-010-4941	80063	SM-B-456264
10	22		80063	SM-C-189369
10	23	5365-01-098-4695	80063	SM-B-169019
10	24	5965-00-168-9615	80063	SM-B-169007
10	25	5330-00-171-6649	81321	62309-14
10	26	5365-01-098-4676	80063	SM-B-169020
10	27	5310-01-100-8467	80063	SM-B-169018
10	28	5965-00-698-0423	80063	SM-C-168986
10	29	5305-00-957-6263	96906	MS35190-210
10	30	5305-00-054-5648	96906	MS-51957-14
10	31	5305-00-655-9246	96906	MS51021-10
10	32	5905-00-105-7768	81349	RCR07G561JS
11	1	5930-00-976-9290	80063	SM-C-456329
11	2	5930-00-977-0990	76854	226063-A1
11	3	5305-00-054-5647	96906	MS-51957-13
11	4	5999-01-254-7851	80063	SM-B-456267
11	5	5305-00-054-6671	96906	MS51957-46
11	6	5820-01-100-0240	80063	SM-B-456232
11	7	5355-01-147-1298	80063	SM-B-456374
11	8	5305-00-054-6650	89016	F36237-22

## CROSS-REFERENCE INDEXES

FIG.	ITEM	FIGURE AND ITEM NUMBER INDEX		
		STOCK NUMBER	FSCM	PART NUMBER
11	9	6240-01-140-2970	80063	SM-B-450166
11	10	6240-00-155-7857	96906	MS25237-328
11	11		80063	SM-B-456245
11	12		80063	SM-C-450181
11	13	5340-00-976-4599	80063	SM-B-456373
11	14	5325-00-930-6121	80063	SM-B-456304
11	15	5995-00-889-1074	80063	SM-C-456303
11	16	5935-00-823-0667	80063	SM-C-415681
11	17	5940-00-937-5237	81349	PB08NA01
11	18		80063	SM-B-456301
11	19		80063	SM-B-450153
11	20	5330-00-584-1231	96906	MS9021-016
11	21	5820-01-010-4941	80063	SM-B-456264
11	22		80063	SM-C-189369
11	23	5365-01-098-4695	80063	SM-B-169019
11	24	5965-00-168-9615	80063	SM-B-169007
11	25	5330-00-171-6649	81321	62309-14
11	26	5365-01-098-4676	80063	SM-B-169020
11	27	5310-01-100-8467	80063	SM-B-169018
11	28	5965-00-698-0423	80063	SM-C-168986
11	29	5305-00-957-6263	96906	MS35190-210
11	30	5305-00-054-5648	96906	MS-51957-14
11	31	5305-00-655-9246	96906	MS51021-10





RECOMMENDED CHANGES TO EQUIPMENT TECHNICAL PUBLICATIONS



THEN... JOT DOWN THE DOPE ABOUT IT ON THIS FORM. CAREFULLY TEAR IT OUT. FOLD IT AND DROP IT IN THE MAIL!

SOMETHING WRONG WITH THIS PUBLICATION?

FROM: (PRINT YOUR UNIT'S COMPLETE ADDRESS)  
 Commander  
 Stateside Army Depot  
 ATTN: AMSTA-US  
 Stateside, N.J. 07703-5007

DATE SENT  
 10 July 1975

PUBLICATION NUMBER TM 11-5840-340-20P	PUBLICATION DATE 23 Jan 78	PUBLICATION TITLE Radar Set AN/PRC-76
--	-------------------------------	--

BE EXACT... PIN-POINT WHERE IT IS

PAGE NO	PARA-GRAPH	FIGURE NO	TABLE NO
33			
44		19	
45			

IN THIS SPACE TELL WHAT IS WRONG AND WHAT SHOULD BE DONE ABOUT IT:

For item 2, change the NSN to read: 5835-00-134-9186.  
Reason: Accuracy.

Identify the cover on the junction box (item no. 5).  
Reason: It is a separate item and is not called out on figure 19.

Add the cover of the junction box as an item in the listing for figure 19.  
Reason: Same as above

SAMPLE

TEAR ALONG PERFORATED LINE

PRINTED NAME, GRADE OR TITLE, AND TELEPHONE NUMBER  
 SSG I. M. DeSpirit of 999-1776

SIGN HERE

FILL IN YOUR  
UNIT'S ADDRESS

FOLD BACK

DEPARTMENT OF THE ARMY

\_\_\_\_\_  
\_\_\_\_\_

OFFICIAL BUSINESS  
PENALTY FOR PRIVATE USE \$300

POSTAGE AND FEES PAID  
DEPARTMENT OF THE ARMY  
DOD 314



TEAR ALONG PERFORATED LINE

**SAMPLE**

Commander  
US Army Communications-Electronics Command  
and Fort Monmouth  
ATTN: AMSEL-ME-MP  
Fort Monmouth, New Jersey 07703-5000



FILL IN YOUR  
UNIT'S ADDRESS

FOLD BACK

DEPARTMENT OF THE ARMY

\_\_\_\_\_  
\_\_\_\_\_

OFFICIAL BUSINESS  
PENALTY FOR PRIVATE USE \$300

POSTAGE AND FEES PAID  
DEPARTMENT OF THE ARMY  
DOD 314



TEAR ALONG PERFORATED LINE

Commander  
US Army Communications-Electronics Command  
and Fort Monmouth  
ATTN: AMSEL-ME-MP  
Fort Monmouth, New Jersey 07703-5000



FILL IN YOUR  
UNIT'S ADDRESS

FOLD BACK

DEPARTMENT OF THE ARMY

\_\_\_\_\_  
\_\_\_\_\_

OFFICIAL BUSINESS  
PENALTY FOR PRIVATE USE \$300

POSTAGE AND FEES PAID  
DEPARTMENT OF THE ARMY  
DOD 314



TEAR ALONG PERFORATED LINE

Commander  
US Army Communications-Electronics Command  
and Fort Monmouth  
ATTN: AMSEL-ME-MP  
Fort Monmouth, New Jersey 07703-5000



FILL IN YOUR  
UNIT'S ADDRESS

FOLD BACK

DEPARTMENT OF THE ARMY

\_\_\_\_\_  
\_\_\_\_\_

OFFICIAL BUSINESS  
PENALTY FOR PRIVATE USE \$300

POSTAGE AND FEES PAID  
DEPARTMENT OF THE ARMY  
DOD 314



TEAR ALONG PERFORATED LINE

Commander  
US Army Communications-Electronics Command  
and Fort Monmouth  
ATTN: AMSEL-ME-MP  
Fort Monmouth, New Jersey 07703-5000



By Order of the Secretary of the Army:

**CARL E. VUONO**  
*General, United States Army*  
*Chief of Staff*

Official:

**R.L. DILWORTH**  
*Brigadier General, United States Army*  
*The Adjutant General*

**DISTRIBUTION:**

To be distributed in accordance with DA Form 12-51 Unit and DS/GS requirements for AN/GRA-39, A, B.





