

TECHNICAL MANUAL

**ORGANIZATIONAL, DIRECT SUPPORT
AND GENERAL SUPPORT MAINTENANCE
REPAIR PARTS AND SPECIAL TOOLS LIST
(INCLUDING DEPOT MAINTENANCE REPAIR PARTS AND SPECIAL TOOLS)
FOR**

**MAST AB-903/G
(NSN 5985-00-933-2197)**

Distribution authorized to the Department of Defense and DOD contractors only for official use or for administration or operational purposes. This determination was made on 19 September 1988. Other requests for this document will be referred to Commander, US Army Communications-Electronics Command and Port Monmouth, ATTN: AMSEL-LC-ME-P, Fort Monmouth, MI 07703-5000.

DESTRUCTION NOTICE – Destroy by any method that will prevent disclosure of contents or reconstruction of the document.

HEADQUARTERS, DEPARTMENT OF THE ARMY

1 JANUARY 1989

Technical Manual
No. 11-5985-263-24P

HEADQUARTERS
DEPARTMENT OF THE ARMY
Washington, DC, 1 January 1989

ORGANIZATIONAL , DIRECT SUPPORT AND GENERAL SUPPORT MAINTENANCE
REPAIR PARTS AND SPECIAL TOOLS LIST
(INCLUDING DEPOT MAINTENANCE REPAIR PARTS AND SPECIAL TOOLS)

FOR

MAST AB-903/G
(NSN 5985-00-933-2197)

Current as of 1 October 1988

REPORTING ERRORS AND RECOMMENDING IMPROVEMENTS

You can help improve this manual. If you find any mistakes or if you know of a way to improve the procedures, please let us know. Mail your letter, DA Form 2028 (Recommended Changes to Publications and Blank Forms), or DA Form 2028-2 located in back of this manual direct to: Commander, US Army Communications-Electronics Command and Fort Monmouth, ATTN: AMSEL-LC-ME-PS, Fort Monmouth, New Jersey 07703-5000. In either case, a reply will be furnished direct to you.

Table of Contents

			Page	Illus/ Figure
Section	I.	Introduction.....	1	
	II.	Repair Parts List.....	1-1	
Group	00	Mast AB-903/G.....	1-1	1
	01	Mast AB-903/G, Telescopic Assemblies	2-1	2
Section	III.	Special Tools List (Not applicable)		
	IV.	Cross-Reference Indexes		
		National Stock Number Index	I-1	
		Part Number Index	I-2	
		Figure and Item Number Index	I-3	

*This manual supersedes TM 11-5985-263-24P, 30 June 1983.

SECTION I

INTRODUCTION

1. Scope

This manual lists and authorizes spares and repair parts; special tools; special test, measurement, and diagnostic equipment (TMDE); and other special support equipment required for performance of organizational, direct support, and general support maintenance of the AB-903/G. It authorizes the requisitioning, issue, and disposition of spares, repair parts and special tools as indicated by the source, maintenance and recoverability (SMR) codes.

2. General

This Repair Parts and Special Tools List is divided into the following sections:

a Section II. Repair Parts List. A list of spares and repair parts authorized by this RPSTL for use in the performance of maintenance. The list also includes parts which must be removed for replacement of the authorized parts. Parts list are composed of functional groups in ascending item number sequence. Figure numbers are listed directly beneath the group header.

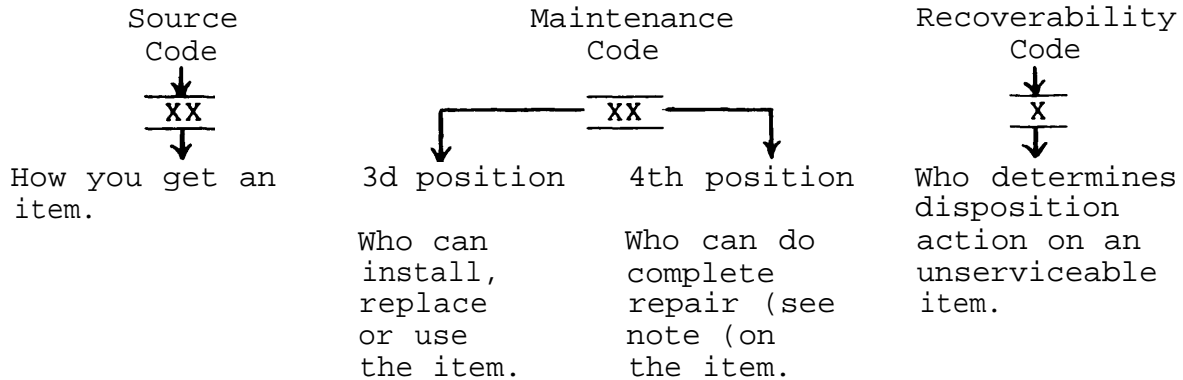
b Section III. Special Tools List. Not applicable.

c Section IV. Cross-Reference Indexes. A list, in National item identification number (NIIN) sequence, of all National stock numbered items appearing in the listing, followed by a list in alphameric sequence of all part numbers appearing in the listings. National stock numbers and part numbers are cross-referenced to each illustration figure and item number appearance. The figure number and item number index lists figure and item numbers in numeric sequence and cross-references National stock number, Federal Supply Code for Manufacturer and part numbers.

3. Explanation of Columns (Section II and III)

a. Item No. (Column (1)). Indicates the number used to identify items called out in the illustration.

b. SMR Code (Column (2)). The source, maintenance, and recoverability (SMR) code is a five-position code containing supply/requisitioning information, maintenance category authorization criteria, and disposition instruction, as shown in the following breakout:



NOTE

Complete repair: Maintenance capacity, capability, and authority to perform all corrective maintenance tasks of the "repair" function in a use/user environment in order to restore serviceability to a failed item.

(1) Source code. The source code tells you how to get an item needed for maintenance, repair, or overhaul of an end item/equipment. Explanations of source codes follows:

Code

Explanation

PA
PB
PC
PD
PE
PF
PG

Stocked items: use the applicable NSN to request/requisition items with these source codes. They are authorized to the category indicated by the code entered in the third position of the SMR code.

NOTE

Items coded PC are subject to deterioration.

KD
KF
KB

Items with these codes are not to be requested/requisitioned individually. They are part of a kit which is authorized to the maintenance category indicated in the third position of the SMR code. The complete kit must be requested and applied.

<u>Code</u>	<u>Explanation</u>
MO - Made at org/AVUM category	Items with these codes are not to be requested/requisitioned individually. They must be made from bulk material which is identified by the part number in the description and usable on code (UOC) column and listed in the Bulk Material group of the repair parts list. If the item is authorized to you by the third position code of the SMR code, but the source code indicates it is made at a higher category, order the item from the higher category of maintenance.
MF - Made at DS/AVIM category	
MH - Made at GS category	
ML - Made at Specialized Repair Activity (SRA)	
MD - Made at Depot	

AO - Assembled by org/AVUM category	Items with these codes are not to be requested/requisitioned individually. The parts that make up the assembled item must be requisitioned or fabricated and assembled at the category of maintenance indicated by the source code. If the third position code of the SMR code authorizes you to replace the item, but the source code indicates the item is assembled at a higher category, order the item from the higher category of maintenance.
AF - Assembled by DS/AVIM category	
AH - Assembled by GS category	
AL - Assembled by SRA	
AD - Assembled by Depot	

<u>Code</u>	<u>Explanation</u>
XA - Do not requisition an "XA" coded item. Order its next higher assembly.	
XB - If an "XB" item is not available from salvage, order it using the FCSM and part number given.	
XC - Installation drawing, diagram, instruction sheet, field service drawing, that is identified by manufacturer's part number .	
XD - Item is not stocked. Order an "XD" coded item through normal supply channels using the FCSM and part number given, if not available.	

NOTE

Cannibalization or controlled exchange, when authorized, may be used as a source of supply for items with the above source codes, except for those source coded "XA" or those aircraft support items restricted by requirements of AR 750-1.

(2) Maintenance code. Maintenance codes tell you the category of maintenance authorized to USE and REPAIR support items. The maintenance codes are entered in the third and fourth positions of the SMR code as follows:

(a) The maintenance code entered in the third position tells you the lowest maintenance category authorized to remove, replace, and use an item. The maintenance code entered in the third position will indicate authorization to one of the following categories of maintenance.

<u>Code</u>	<u>Application/Explanation</u>
C -	Crew or operator maintenance done within organizational or aviation maintenance.
O -	Organizational or aviation unit category can remove, replace, and use the item.
F -	Direct support or aviation intermediate category can remove, replace, and use the item.
H -	General support category can remove, replace, and use the item.
L -	Specialized repair activity can remove, replace, and use the item.
D -	Depot category can remove, replace, and use the item.

(b) The maintenance code entered in the fourth position tells whether or not the item is to be repaired and identifies the lowest maintenance category with the capability to do complete repair (i.e., perform all authorized repair functions). This position will contain one of the following maintenance codes.

NOTE

Some limited repair may be done on the item at a lower category of maintenance, if authorized by the Maintenance Allocation Chart (MAC) and SMR codes.

<u>Code</u>	<u>Application/Explanation</u>
O -	Organizational or aviation unit is the lowest category that can do complete repair of the item.
F -	Direct support or aviation intermediate is the lowest category that can do complete repair of the item.
H -	General support is the lowest category that can do complete repair of the item.
L -	Specialized repair activity (designate the specialized repair activity) is the lowest category that can do complete repair of the item.
D -	Depot is the lowest category that can do complete repair of the item.

<u>Code</u>	<u>Application/Explanation</u>
Z -	Nonreparable. No repair is authorized.
B -	No repair is authorized. (No parts or special tools are authorized for the maintenance of a "B" coded item.) However, the item may be reconditioned by adjusting, lubricating, etc., at the user category.

(3) Recoverability code. Recoverability codes are assigned to items to indicate the disposition action on unserviceable items. The recoverability code is entered in the fifth position of the SMR Code as follows:

<u>Recoverability codes</u>	<u>Application/Explanation</u>
Z -	Nonreparable item. When unserviceable, condemn and dispose of the item at the category of maintenance shown in the third position of SMR code.
O -	Reparable item. When uneconomically repairable, condemn and dispose of the item at organizational or aviation unit category.
F -	Reparable item. When uneconomically repairable, condemn and dispose of the item at direct support or aviation intermediate category.
H -	Reparable item. When uneconomically repairable, condemn and dispose of the item at general support category.
D -	Reparable item. When beyond lower category repair capability, return to depot. Condemnation and disposal of item not authorized below depot category.
L -	Reparable item. Condemnation and disposal not authorized below specialized repair activity (SRA).
A -	Item requires special handling or condemnation procedures because of specific reasons (e.g., precious metal content, high dollar value, critical material, or hazardous material). Refer appropriate manuals/directives for specific instructions.

c. FSCM (Column (3)). The Federal Supply Code for Manufacturer (FSCM) is a 5-digit numeric code which is used to identify the manufacturer, distributor, or Government agency, etc., that supplies the item.

d. (Part Number Column (4)). Indicates the primary number used by the manufacturer (individual, company, firm, corporation, or Government activity), which controls the design and characteristics of the item by means of its engineering drawings, specifications, standards, and inspection requirements to identify an item or range of items.

NOTE

When you use an NSN to requisition an item, the item you receive may have a different part number from the part ordered.

e. Description and Usable on Code (UOC) (Column (5)). This column includes the following information.

(1) The Federal item name and, when required, a minimum description to identify the item.

(2) The statement "END OF FIGURE" appears just below the last item description in Column (5) for a given figure in both section II and section III

f. Qty(Column (6)). Indicates the quantity of the item used in the 'breakout shown on the illustration figure, which is prepared for a functional group, subfunctional group, or an assembly. A "V" appearing in this column in lieu of a quantity indicates that the quantity is variable and the quantity may vary from application to application.

4. Explanation of Columns (Section IV)

a. National Stock Number (NSN) Index.

(1) Stock number column. This column lists the NSN by National item identification number (NIIN) sequence. The NIIN consists of the last nine digits of the NSN. When using this column to locate an item, ignore the first four digits of the NSN. When requisitioning items use the complete NSN (13 digits).

(2) Fig. column. This column lists the number of the figure where the item is identified/located. The illustrations are in numerical sequence in sections II and III.

(3) Item column. The item number identifies the item associated with the figure listed in the adjacent Fig. column. This item is also identified by the NSN listed on the same line.

b. Part Number Index. Part numbers in this index are listed by part-number in ascending alphameric sequence.

(1) FSCM column. This column lists the Federal supply code for manufacturer.

(2) Part number column. This column indicates the part number assigned to the item.

(3) Stock number column. This column lists the National stock number for the associated part number and manufacturer identified in the part number and FSCM columns to the left.

(4) Fig. column. This column lists the number of the figure where the item is identified/located in sections II and III.

(5) Item column. The item number is that number assigned to the item as it appears in the figure referenced in the adjacent figure number column.

c. Figure and Item Number Index.

(1) Fig. column. This column lists the number of the figure where the item is identified/located in sections 11 and 111.

(2) Item column. The item number is that number assigned to the item as it appears in the figure referenced in the adjacent figure number column.

(3) Stock number column. This column lists the National stock number for the item.

(4) FSCM column. The Federal supply code for manufacturer (FSCM) is a 5-digit numeric code used to identify the manufacturer, distributor, or Government agency, etc., that supplies the item.

(5) Part number column. Indicates the primary number used by the manufacturer (individual, firm, corporation, or Government activity), which controls the design and characteristics of the item by means of its engineering drawings, specifications, standards, and inspection requirements to identify an item or range of item.

5. Special Information

a. Associated Publications. The following publication pertains to the AB-903/G and its components:

TM 11-5985-263-15, Mast AB-903/G

b. National Stock Numbers. National stock numbers (NSN's) that are missing from P source coded items have been applied for and will be added to this TM by future change/revision when they are entered in the Army Master Data File (AMDF). Until the NSN's are established and published, submit exception requisitions to: Commander, US Army Communications-Electronics Command and Fort Monmouth, ATTN: AMSEL-LC-MM, Fort Monmouth, NJ 07703-5000 for the part to support your equipment.

6. How to Locate Repair Parts

a. When National stock number or part number is not known.

(1) First. Using the table of contents, determine the assembly group or subassembly group to which the item belongs. This is necessary since figures are prepared for assembly groups and subassembly groups, and listings are divided into the same groups.

(2) Second. Find the figure covering the assembly group or subassembly group to which the item belongs.

(3) Third. Identify the item on the figure and note the item number.

(4) Fourth. Refer to the Repair Parts List for the figure to find the part number for the item number noted on the figure.

(5) Fifth. Refer to the Part Number Index to find the NSN, if assigned.

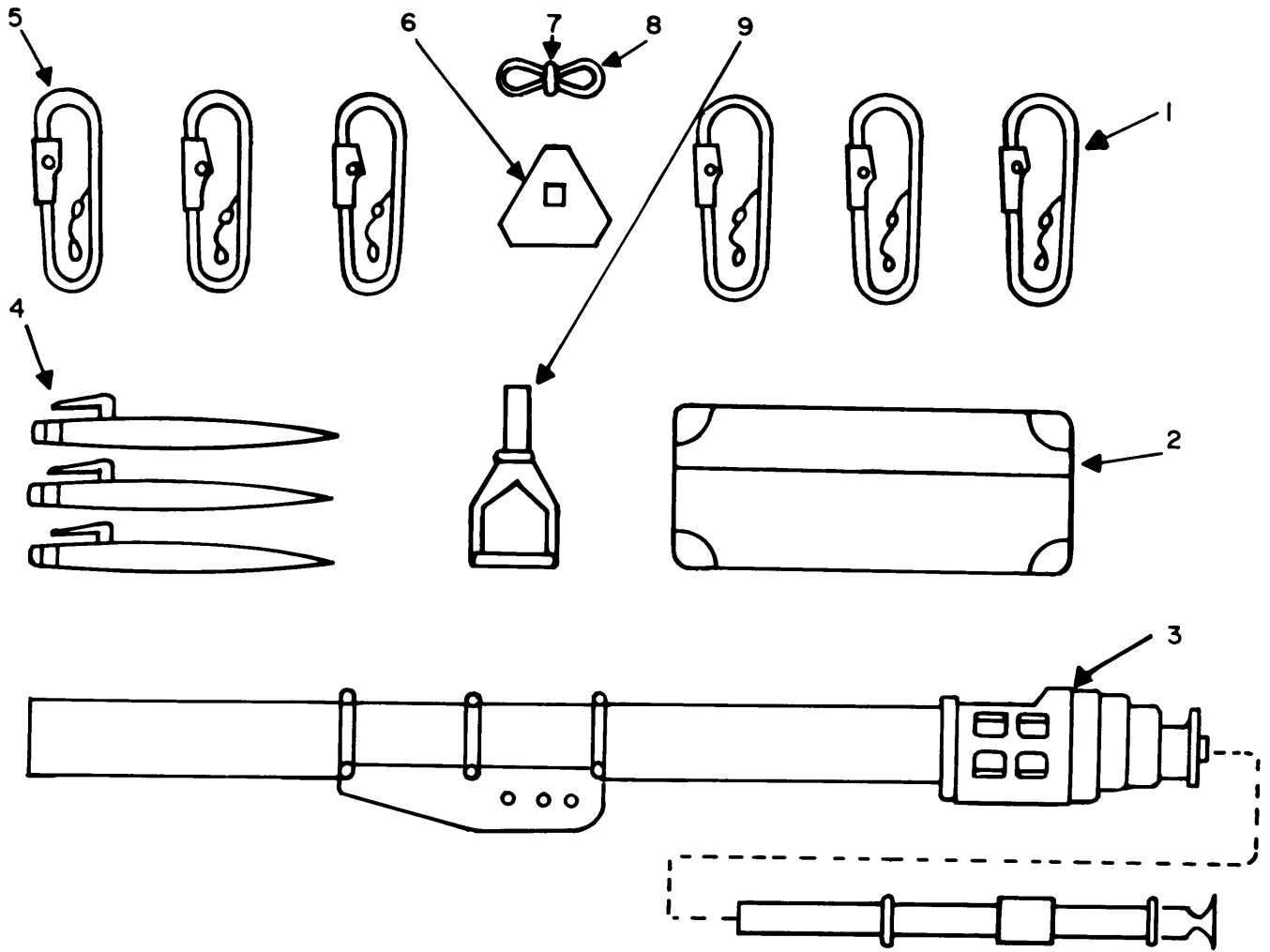
b. When National stock number or part number is known.

(1) First. Using the index of National stock numbers and part numbers, find the pertinent National stock number or part number. The NSN index is in National item identification number (NIIN) sequence (para 4a(1)). The part numbers in the part number index are listed in ascending alphameric sequence (para 4b). Both indexes cross-reference you to the illustration figure and item number of the item you are looking for.

(2) Second. After finding the figure and item number, verify that the item is the one you're looking for, then locate the item number in the repair parts list for the figure.

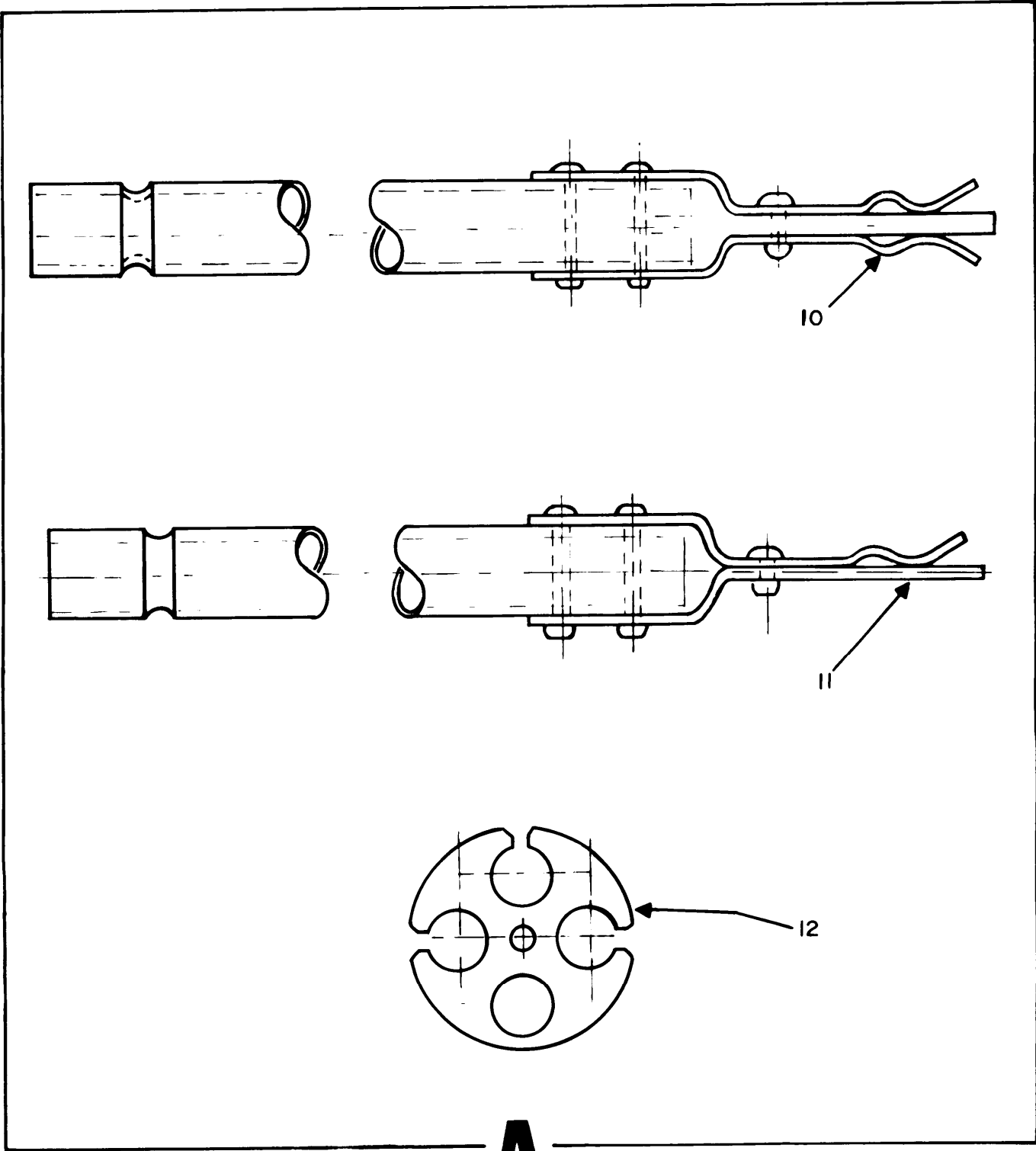
7. Abbreviations

Not applicable.



CEIWM001

Figure 1. Mast AB-903/G Major Components (Sht 1 of 2)



A

CEIWM002

Figure 1. Mast AB-903/G Major Components (Sht 2 of 2)

(1) ITEM NO	(2) SMR CODE	(3) FSCM	(4) PART NUMBER	(5) DESCRIPTION AND USABLE ON CODE (UOC)	(6) QTY
-------------------	--------------------	-------------	-----------------------	---	------------

GROUP 00 MAST AB-903/G

FIGURE 1

1	PAOZZ	80063	SM-D-493216	GUY ASSY-LOWER	3
2	PAOZZ	80063	SM-D-493220	BAG ASSY,STORAGE	1
3	PAHHH	80063	SM-E-493209	MAST ASSEMBLY	1
4	PAOZZ	80063	SM-D-493218	STAKE,GUY	3
5	PAOZZ	80063	SM-D-493217	GUY ASSY-UPPER	3
6	PAOZZ	80063	SM-C-493215	PLATE,BASE,MAST	1
7	PAOZZ	80063	SM-C-493219	STRAP ASSY,CPSE WIR	1
8	PAOZZ	80063	SM-B-493213	WIRE ASSY CPSE	1
9	PAOZZ	80063	SM-D-493210	ADAPTER ASSEMBLY	1
10	PAOZZ	80063	SM-C-493211	TUBE ASSY CPSE	3
11	PAOZZ	80063	SM-C-493212	TUBE ASSY CPSE	1
12	PAOZZ	80063	SM-C-493214	GUIDE,CPSE TUBE	1

END OF FIGURE

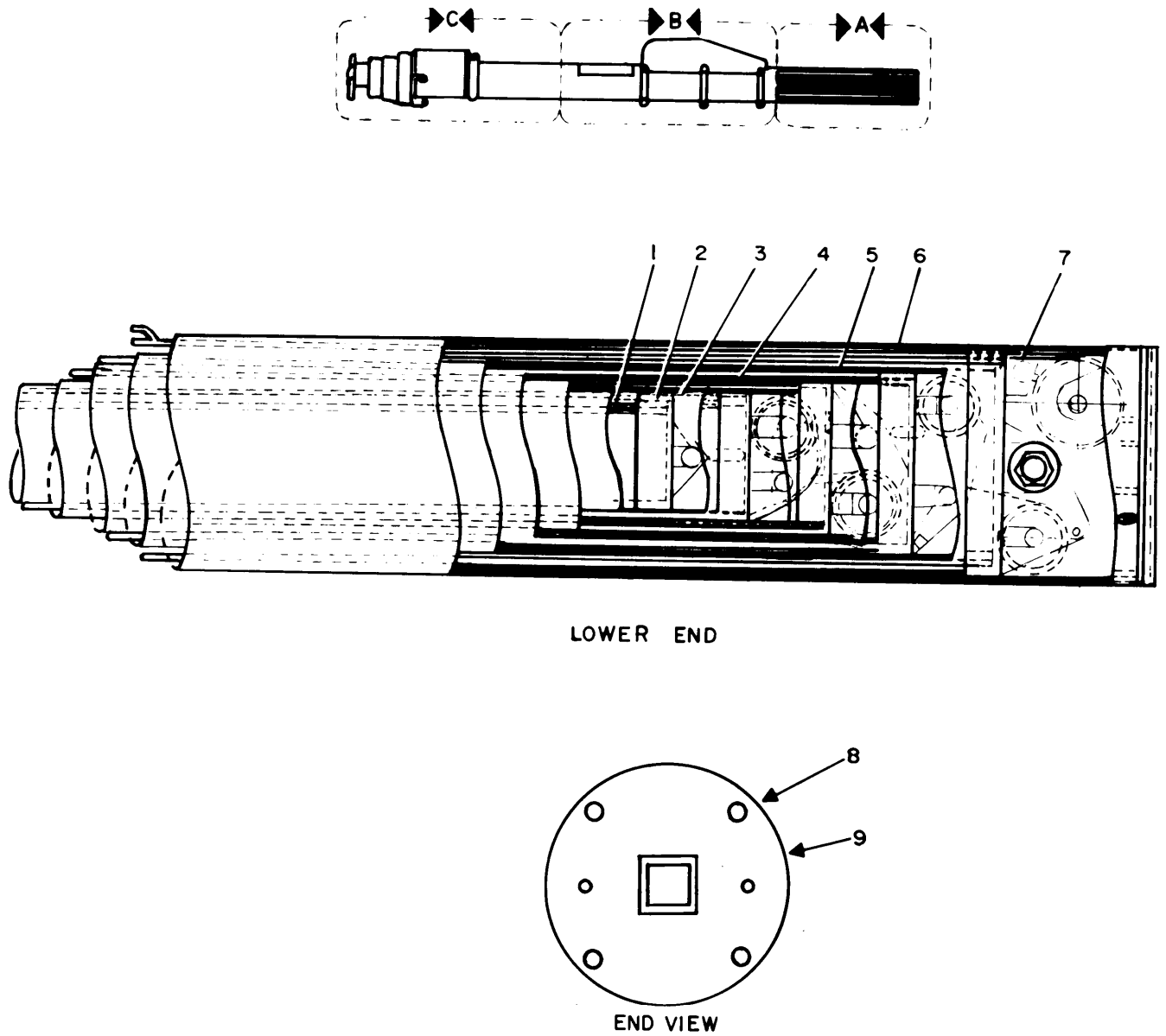
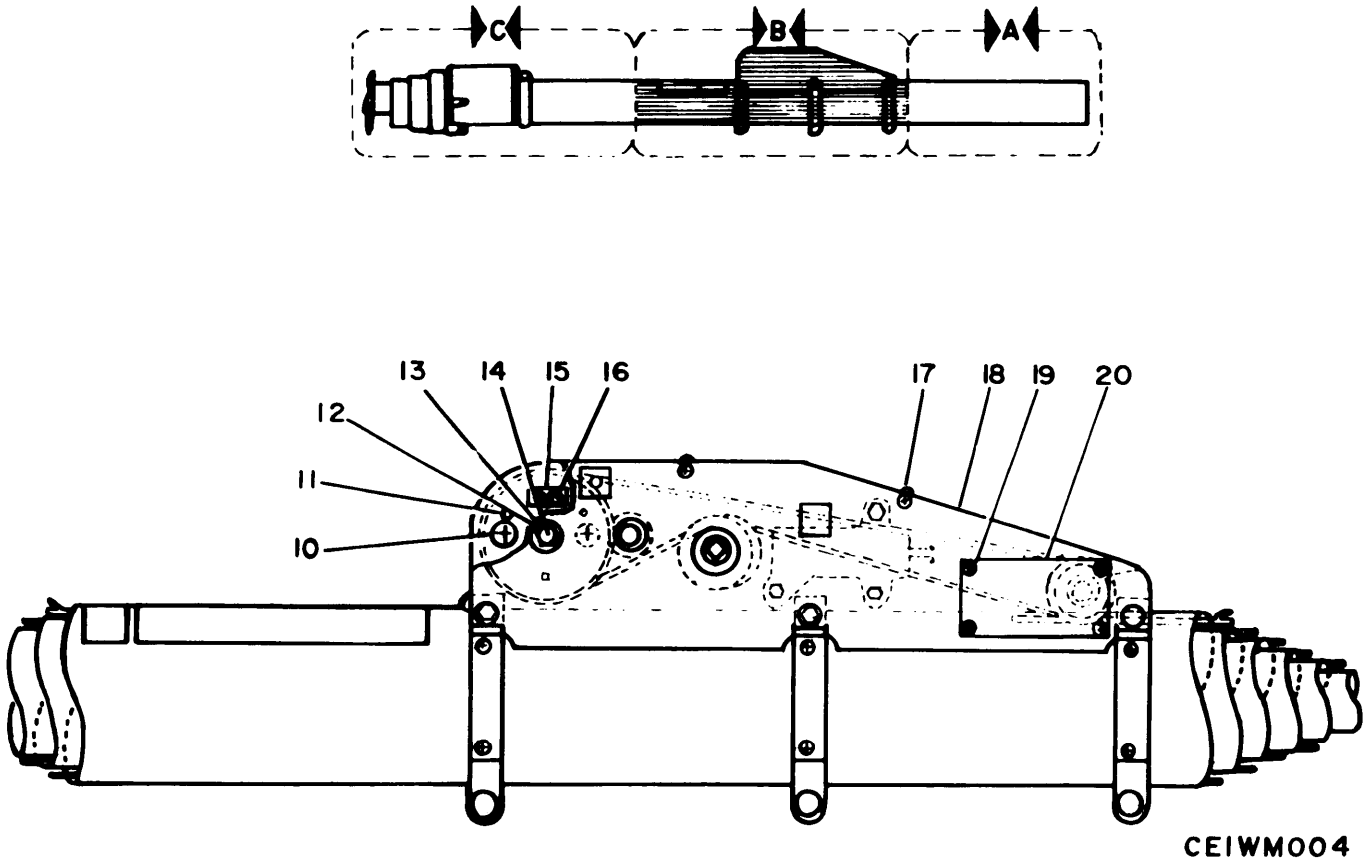
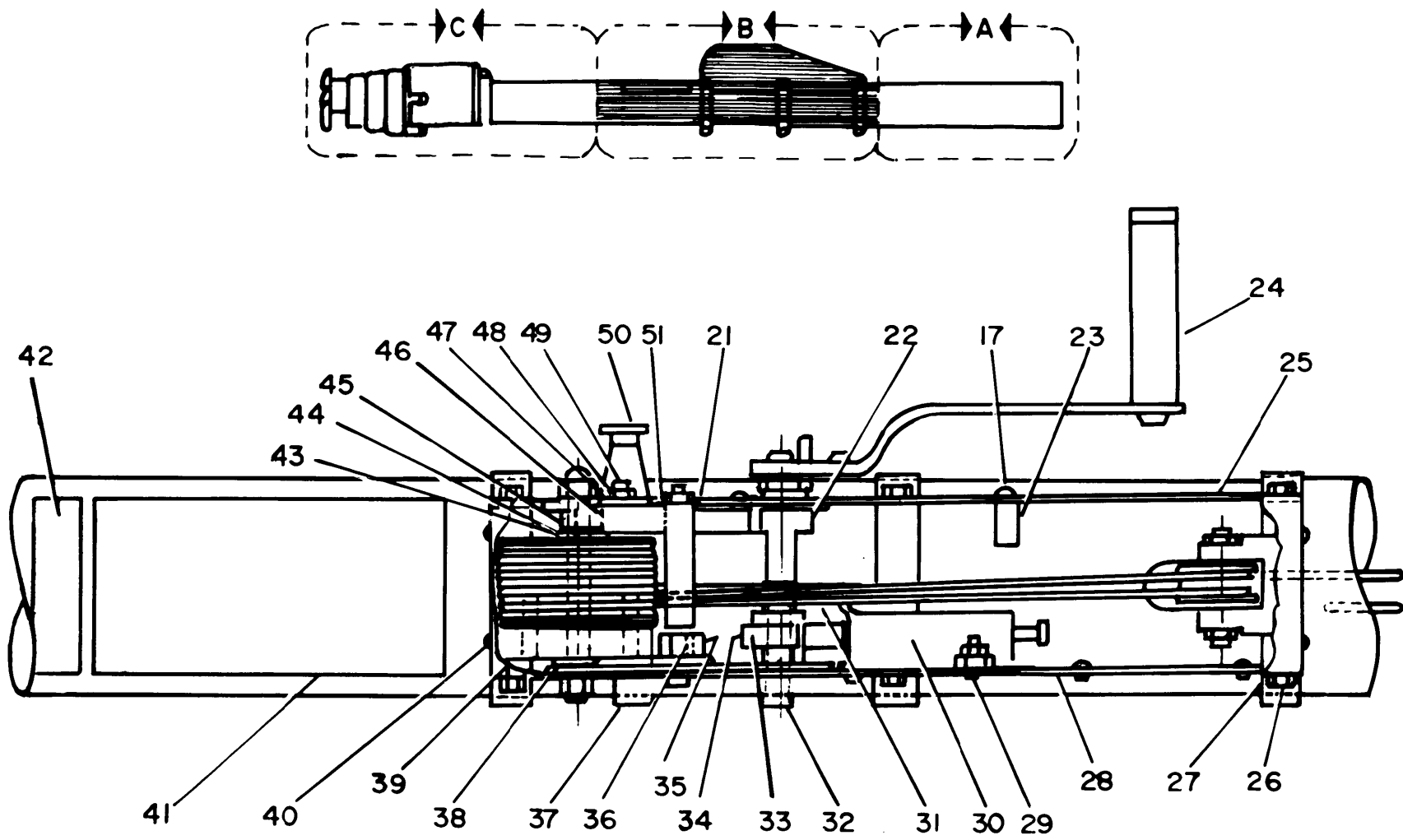


Figure 2. Mast AB-903/G, Telescopic Assemblies (Sht 1 of 4)



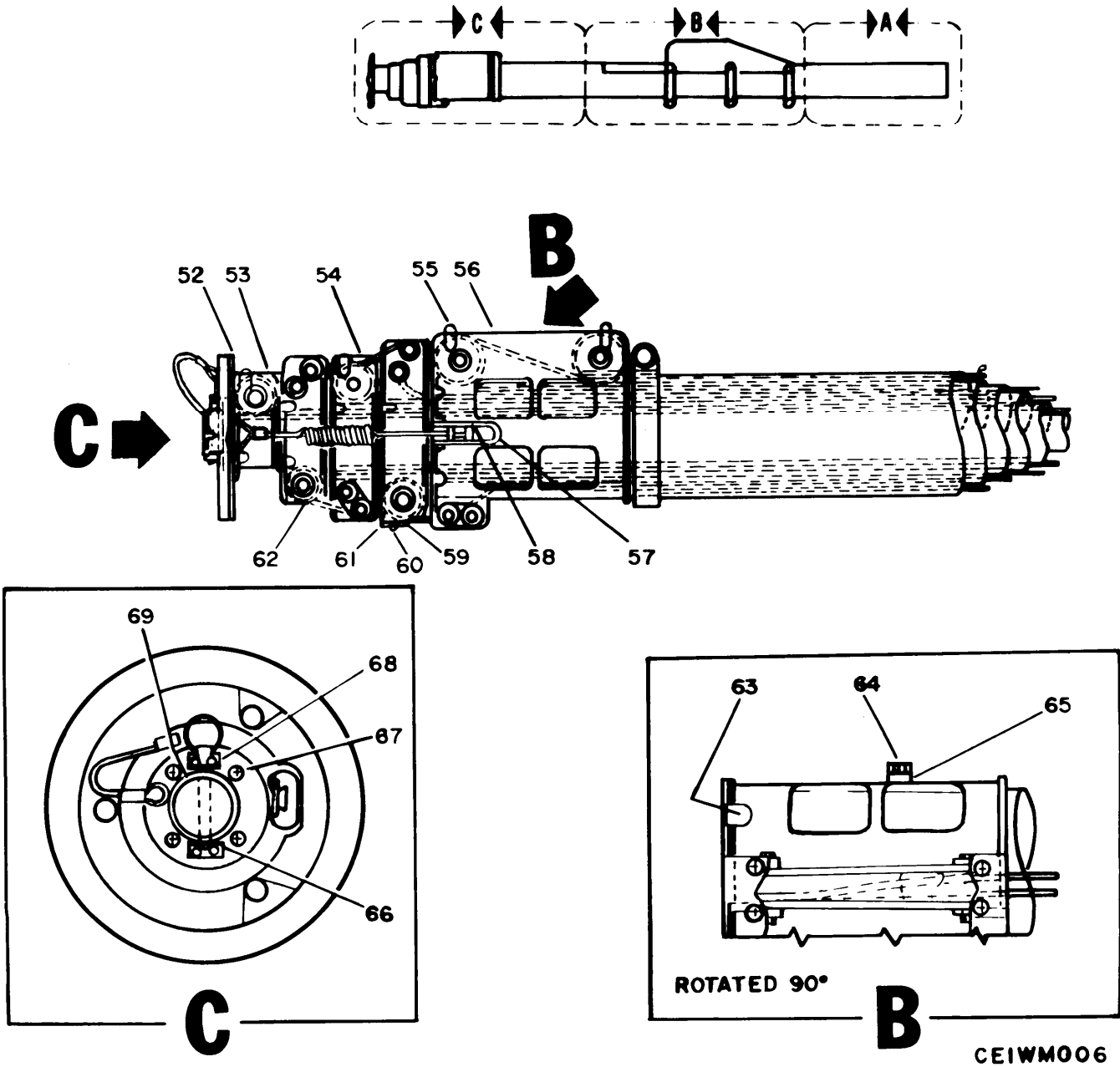
CEIWM004

Figure 2. Mast AB-903/G, Telescopic Assemblies (Sht 2 of 4)



TM 11-5985-263-24P

Figure 2. Mast AB-903/G, Telescopic Assemblies (Sht 3 of 4)



CEIWM006

Figure 2. Mast AB-903/G, Telescopic Assemblies (Sht 4 of 4)

(1) ITEM NO	(2) SMR CODE	(3) FSCM	(4) PART NUMBER	(5) DESCRIPTION AND USABLE ON CODE (UOC)	(6) QTY
GROUP 01 MAST AB-903/G TELESCOPIC ASSEMBLIES					
FIGURE 2					
1	PAHZZ	80063	SM-D-493226	MAST SECT ASSY,NO.6	1
2	PAHZZ	80063	SM-D-493225	MAST SECT ASSY,NO.5	1
3	PAHZZ	80063	SM-D-493224	MAST SECT ASSY,NO.4	1
4	PAHZZ	80063	SM-D-493223	MAST SECT ASSY,NO.3	1
5	PAHZZ	80063	SM-D-493222	MAST SECT ASSY,NO.2	1
6	PAHZZ	80063	SM-D-493221	MAST SECT ASSY,NO.1	1
7	PAHZZ	80063	SM-B-493293	LINE,RADIO FREQUENC	1
8	PAHZZ	96906	MS24693C26	SCREW,MACHINE	4
9	PAHZZ	80063	SM-D-493262	CAP,BASE	1
10	PAHZZ	96906	MS24694C102	SCREW,MACHINE	2
11	PAHZZ	96906	MS16562-230	PIN,SPRING	3
12	PAHZZ	88044	AN315C6R	NUT,PLAIN	2
13	PAHZZ	96906	MS35338-141	WASHER,LOCK	2
14	PAHZZ	80063	SM-C-493315	SHAFT,REEL	1
15	PAHZZ	80063	SM-B-493329	RETAINER,CABLE	1
16	PAHZZ	96906	MS24693C29	SCREW,MACHINE	2
17	PAHZZ	96906	MS51957C26	SCREW,ROUND HEAD	12
18	PAHZZ	80063	SM-D-493345	COVER,DUSTY,	1
19	PAHZZ	96906	MS20470B4-4	RIVET,SOLID	4
20	PAHZZ	80063	SM-C-493353	PLATE,IDENT	1
21	PAHZZ	88044	AN960C8161	WASHER,FLAT	5
22	PAHZZ	80063	SM-C-493323	GEAR,SPUR	1
23	PAHZZ	80063	SM-C-493344	SPACER,RING	2
24	PAHZZ	80063	SM-D-493346	HANDLE ASSEMBLY	1
25	PAHZZ	80063	SM-D-493313	SUPPORT,SIDE WINCH	1
26	PAHZZ	88044	AN4C3A	BOLT	6
27	PAHZZ	88044	AN960C4161	WASHER,FLAT	6
28	PAHZZ	80063	SM-D-493312	SUPPORT,SIDE WINCH	1
29	PAHZZ	88044	AN3C5A	BOLT,MACHINE	3
30	PAHZZ	80063	SM-D-493335	BRAKE ASSEMBLY	1
31	PAHZZ	80063	SM-C-493319	PULLEY ASSEY,GUIDE	1
32	PAHZZ	80063	SM-C-493316	SHAFT,HANDLE	1
33	PAHZZ	96906	MS16562-224	PIN,SPRING	1
34	PAHZZ	80063	FS-04	CLUTCH	1
35	PAHZZ	80063	SM-B-493322	GEAR,TRANSFER	1
36	PAHZZ	80063	SM-B-493317	KEY,GEAR-TRANSFER	1
37	PAHZZ	80063	SM-C-493314	SHAFT,INTERMEDIATE	1
38	PAHZZ	80063	FF-600-2	BUSHING	1
39	PAHZZ	80063	SM-C-493320	GEAR,SPUR	1
40	PAHZZ	80063	SM-D-493325	REEL ASSEMBLY	1
41	PAHZZ	80063	SM-C-493352	PLATE,INSTRUCTION	1
42	PAHZZ	80063	SM-C-493363	CAUTION PLATE	1
43	PAHZZ	80063	FF-636-3	BUSHING	1
44	PAHZZ	80063	SM-B-493324	WASHER,SPACING	3
45	PAHZZ	96906	MS16624-4050	RING,RETAINING	8
46	PAHZZ	80063	SM-C-493321	GEAR,SPUR	1
47	PAHZZ	96906	MS35338-138	WASHER,LOCK	5

(1) ITEM NO	(2) SMR CODE	(3) FSCM	(4) PART NUMBER	(5) DESCRIPTION AND USABLE ON CODE (UOC)	(6) QTY
48	PAHZZ	88044	AN315C3R	NUT, PLAIN	5
49	PAHZZ	96906	MS24693C273	SCREW, MACHINE	2
50	PAHZZ	80063	SM-C-493330	PLUNGER ASSEMBLY	1
51	PAHZZ	80063	SM-B-493318	KEY, GEAR	2
52	PAHZZ	80063	SM-C-493261	RING ASSY, GUY	1
53	PAHZZ	80063	SM-B-493268	COVER, DUST	1
54	PAHZZ	80063	SM-B-493267	COVER, DUST	1
55	PAHZZ	96906	MS51957C25	SCREW, ROUND HEAD	10
56	PAHZZ	80063	SM-C-493266	COVER, DUST	1
57	PAHZZ	80063	SM-C-493272	LATCH ASSEMBLY	1
58	PAHZZ	96906	MS51958C60	SCREW, ROUND HEAD	2
59	PAHZZ	80063	SM-B-493270	COVER, DUST	1
60	PAHZZ	96906	MS51957C28	SCREW, ROUND HEAD	2
61	PAHZZ	80063	SM-B-493304	SPACER, UPPER HOUSIN	1
62	PAHZZ	80063	SM-B-493269	COVER, DUST	1
63	PAHZZ	96906	MS24693C25	SCREW, MACHINE	16
64	PAFZZ	80063	SM-B-493271	PIN, STOP	1
65	PAHZZ	85480	NW25-6873	WASHER, FLAT, NYLON	1
66	PAHZZ	80063	SM-B-493265	CLIP, RETAINER	2
67	PAHZZ	96906	MS24693C28	SCREW, MACHINE	4
68	PAHZZ	96906	MS24693C3	SCREW, MACHINE	4
69	PAHZZ	80063	SM-C-493263	CAP ASSY, UPPER	1

END OF FIGURE

NATIONAL STOCK NUMBER INDEX

STOCK NUMBER	FIG	ITEM	STOCK NUMBER	FIG	ITEM
5315-00-058-9765	2	11			
5305-00-066-7327	2	67			
5305-00-082-6774	2	10			
5305-00-088-9665	2	16			
5320-00-119-6823	2	19			
5306-00-150-9527	2	29			
5305-00-225-6400	2	68			
5365-00-804-7645	2	45			
5315-00-841-4442	2	33			
4710-00-933-2183	2	3			
5310-00-933-8120	2	47			
5305-00-958-2918	2	8			
5305-00-959-4158	2	49			
5305-00-969-6495	2	63			
5310-00-984-7042	2	13			
5985-01-193-7380	2	7			

PART NUMBER INDEX

FSCM	PART NUMBER	STOCK NUMBER	FIG	ITEM
88044	AN3C5A	5306-00-150-9527	2	29
88044	AN315C3R		2	48
88044	AN315C6R		2	12
88044	AN4C3A		2	26
88044	AN960C4161		2	27
88044	AN960C8161		2	21
80063	FF-600-2		2	38
80063	FF-636-3		2	43
80063	FS-04		2	34
96906	MS16562-224	5315-00-841-4442	2	33
96906	MS16562-230	5315-00-058-9765	2	11
96906	MS16624-4050	5365-00-804-7645	2	45
96906	MS20470B4-4	5320-00-119-6823	2	19
96906	MS24693C25	5305-00-969-6495	2	63
96906	MS24693C26	5305-00-958-2918	2	8
96906	MS24693C273	5305-00-959-4158	2	49
96906	MS24693C28	5305-00-066-7327	2	67
96906	MS24693C29	5305-00-088-9665	2	16
96906	MS24693C3	5305-00-225-6400	2	68
96906	MS24694C102	5305-00-082-6774	2	10
96906	MS35338-138	5310-00-933-8120	2	47
96906	MS35338-141	5310-00-984-7042	2	13
96906	MS51957C25		2	55
96906	MS51957C26		2	17
96906	MS51957C28		2	60
96906	MS51958C60		2	58
85480	NW25-6873		2	65
80063	SM-B-493213		1	8
80063	SM-B-493265		2	66
80063	SM-B-493267		2	54
80063	SM-B-493268		2	53
80063	SM-B-493269		2	62
80063	SM-B-493270		2	59
80063	SM-B-493271		2	64
80063	SM-B-493293	5985-01-193-7380	2	7
80063	SM-B-493304		2	61
80063	SM-B-493317		2	36
80063	SM-B-493318		2	51
80063	SM-B-493322		2	35
80063	SM-B-493324		2	44
80063	SM-B-493329		2	15
80063	SM-C-493211		1	10
80063	SM-C-493212		1	11
80063	SM-C-493214		1	12
80063	SM-C-493215		1	6
80063	SM-C-493219		1	7
80063	SM-C-493261		2	52
80063	SM-C-493263		2	69
80063	SM-C-493266		2	56
80063	SM-C-493272		2	57
80063	SM-C-493314		2	37

PART NUMBER INDEX

FSCM	PART NUMBER	STOCK NUMBER	FIG	ITEM
80063	SM-C-493315		2	14
80063	SM-C-493316		2	32
80063	SM-C-493319		2	31
80063	SM-C-493320		2	39
80063	SM-C-493321		2	46
80063	SM-C-493323		2	22
80063	SM-C-493330		2	50
80063	SM-C-493344		2	23
80063	SM-C-493352		2	41
80063	SM-C-493353		2	20
80063	SM-C-493363		2	42
80063	SM-D-493210		1	9
80063	SM-D-493216		1	1
80063	SM-D-493217		1	5
80063	SM-D-493218		1	4
80063	SM-D-493220		1	2
80063	SM-D-493221		2	6
80063	SM-D-493222		2	5
80063	SM-D-493223		2	4
80063	SM-D-493224	4710-00-933-2183	2	3
80063	SM-D-493225		2	2
80063	SM-D-493226		2	1
80063	SM-D-493262		2	9
80063	SM-D-493312		2	28
80063	SM-D-493313		2	25
80063	SM-D-493325		2	40
80063	SM-D-493335		2	30
80063	SM-D-493345		2	18
80063	SM-D-493346		2	24
80063	SM-E-493209		1	3

FIG	ITEM	FIGURE AND ITEM NUMBER INDEX		
		STOCK NUMBER	FSCM	PART NUMBER
1	1		80063	SM-D-493216
1	2		80063	SM-D-493220
1	3		80063	SM-E-493209
1	4		80063	SM-D-493218
1	5		80063	SM-D-493217
1	6		80063	SM-C-493215
1	7		80063	SM-C-493219
1	8		80063	SM-B-493213
1	9		80063	SM-D-493210
1	10		80063	SM-C-493211
1	11		80063	SM-C-493212
1	12		80063	SM-C-493214
2	1		80063	SM-D-493226
2	2		80063	SM-D-493225
2	3	4710-00-933-2183	80063	SM-D-493224
2	4		80063	SM-D-493223
2	5		80063	SM-D-493222
2	6		80063	SM-D-493221
2	7	5985-01-193-7380	80063	SM-B-493293
2	8	5305-00-958-2918	96906	MS24693C26
2	9		80063	SM-D-493262
2	10	5305-00-082-6774	96906	MS24694C102
2	11	5315-00-058-9765	96906	MS16562-230
2	12		88044	AN315C6R
2	13	5310-00-984-7042	96906	MS35338-141
2	14		80063	SM-C-493315
2	15		80063	SM-B-493329
2	16	5305-00-088-9665	96906	MS24693C29
2	17		96906	MS51957C26
2	18		80063	SM-D-493345
2	19	5320-00-119-6823	96906	MS20470B4-4
2	20		80063	SM-C-493353
2	21		88044	AN960C8161
2	22		80063	SM-C-493323
2	23		80063	SM-C-493344
2	24		80063	SM-D-493346
2	25		80063	SM-D-493313
2	26		88044	AN4C3A
2	27		88044	AN960C4161
2	28		80063	SM-D-493312
2	29	5306-00-150-9527	88044	AN3C5A
2	30		80063	SM-D-493335
2	31		80063	SM-C-493319
2	32		80063	SM-C-493316
2	33	5315-00-841-4442	96906	MS16562-224
2	34		80063	FS-04
2	35		80063	SM-B-493322
2	36		80063	SM-B-493317
2	37		80063	SM-C-493314
2	38		80063	FF-600-2
2	39		80063	SM-C-493320

FIG	ITEM	FIGURE AND ITEM NUMBER INDEX		
		STOCK NUMBER	FSCM	PART NUMBER
2	40		80063	SM-D-493325
2	41		80063	SM-C-493352
2	42		80063	SM-C-493363
2	43		80063	FF-636-3
2	44		80063	SM-B-493324
2	45	5365-00-804-7645	96906	MS16624-4050
2	46		80063	SM-C-493321
2	47	5310-00-933-8120	96906	MS35338-138
2	48		88044	AN315C3R
2	49	5305-00-959-4158	96906	MS24693C273
2	50		80063	SM-C-493330
2	51		80063	SM-B-493318
2	52		80063	SM-C-493261
2	53		80063	SM-B-493268
2	54		80063	SM-B-493267
2	55		96906	MS51957C25
2	56		80063	SM-C-493266
2	57		80063	SM-C-493272
2	58		96906	MS51958C60
2	59		80063	SM-B-493270
2	60		96906	MS51957C28
2	61		80063	SM-B-493304
2	62		80063	SM-B-493269
2	63	5305-00-969-6495	96906	MS24693C25
2	64		80063	SM-B-493271
2	65		85480	NW25-6873
2	66		80063	SM-B-493265
2	67	5305-00-066-7327	96906	MS24693C28
2	68	5305-00-225-6400	96906	MS24693C3
2	69		80063	SM-C-493263

RECOMMENDED CHANGES TO EQUIPMENT TECHNICAL PUBLICATIONS



THEN... JOT DOWN THE DOPE ABOUT IT ON THIS FORM. CAREFULLY TEAR IT OUT. FOLD IT AND DROP IT IN THE MAIL.

SOMETHING WRONG WITH THIS PUBLICATION?

FROM (PRINT YOUR UNIT'S COMPLETE ADDRESS)
 Commander
 Stateside Army Depot
 ATTN: AMSTA-US
 Stateside, N.J. 07703-5007

DATE SENT
 10 July 1975

PUBLICATION NUMBER TM 11-5840-340-20P	PUBLICATION DATE 23 Jan 78	PUBLICATION TITLE Radar Set AN/PRC-76
--	-------------------------------	--

BE EXACT PIN-POINT WHERE IT IS				IN THIS SPACE TELL WHAT IS WRONG AND WHAT SHOULD BE DONE ABOUT IT:
PAGE NO	PARA-GRAPH	FIGURE NO	TABLE NO	
33				For item 2, change the NSN to read: 5835-00-134-9186. <u>Reason:</u> Accuracy.
44		19		Identify the cover on the junction box (item no. 5). <u>Reason:</u> It is a separate item and is not called out on figure 19.
45				Add the cover of the junction box as an item in the listing for figure 19. <u>Reason:</u> Same as above

SAMPLE

PRINTED NAME, GRADE OR TITLE, AND TELEPHONE NUMBER
 SSG I. M. DeSpirit of 999-1776

SIGN HERE

TEAR ALONG PERFORATED LINE

FILL IN YOUR
UNIT'S ADDRESS

FOLD BACK

DEPARTMENT OF THE ARMY

OFFICIAL BUSINESS

SAMPLE

Commander
US Army Communications-Electronics Command
and Fort Monmouth
ATTN: AMSEL-LC-ME-PS
Fort Monmouth, New Jersey 07703-5000

TEAR ALONG PERFORATED LINE

RECOMMENDED CHANGES TO EQUIPMENT TECHNICAL PUBLICATIONS



SOMETHING WRONG WITH THIS PUBLICATION?

THEN...JOT DOWN THE DOPE ABOUT IT ON THIS FORM. CAREFULLY TEAR IT OUT, FOLD IT AND DROP IT IN THE MAIL.

FROM: (PRINT YOUR UNIT'S COMPLETE ADDRESS)

DATE SENT

PUBLICATION NUMBER
TM 11-5985-263-24P

PUBLICATION DATE
1 January 89

PUBLICATION TITLE
Mast AB-903/G

BE EXACT PIN-POINT WHERE IT IS

PAGE NO. PARA-GRAPH FIGURE NO. TABLE NO.

IN THIS SPACE TELL WHAT IS WRONG AND WHAT SHOULD BE DONE ABOUT IT:

TEAR ALONG PERFORATED LINE

PRINTED NAME GRADE OR TITLE AND TELEPHONE NUMBER

SIGN HERE

FILL IN YOUR
UNIT'S ADDRESS

FOLD BACK

DEPARTMENT OF THE ARMY

OFFICIAL BUSINESS

Commander
US Army Communications-Electronics Command
and Fort Monmouth
ATTN: AMSEL-LC-ME-PS
Fort Monmouth, New Jersey 07703-5000

TEAR ALONG PERFORATED LINE

RECOMMENDED CHANGES TO EQUIPMENT TECHNICAL PUBLICATIONS



THEN...JOT DOWN THE DOPE ABOUT IT ON THIS FORM. CAREFULLY TEAR IT OUT, FOLD IT AND DROP IT IN THE MAIL.

SOMETHING WRONG WITH THIS PUBLICATION?

FROM: (PRINT YOUR UNIT'S COMPLETE ADDRESS)

DATE SENT

PUBLICATION NUMBER

TM 11-5985-263-24P

PUBLICATION DATE

1 January 89

PUBLICATION TITLE

Mast AB-903/G

BE EXACT PIN-POINT WHERE IT IS

PAGE NO.	PARA-GRAPH	FIGURE NO.	TABLE NO.

IN THIS SPACE TELL WHAT IS WRONG AND WHAT SHOULD BE DONE ABOUT IT:

TEAR ALONG PERFORATED LINE

PRINTED NAME GRADE OR TITLE AND TELEPHONE NUMBER

SIGN HERE

DA FORM 2028-2
1 JUL 79

PREVIOUS EDITIONS ARE OBSOLETE

P.S.--IF YOUR OUTFIT WANTS TO KNOW ABOUT YOUR RECOMMENDATION MAKE A CARBON COPE OF THIS AND GIVE IT TO YOUR HEADQUARTERS.

FILL IN YOUR
UNIT'S ADDRESS

FOLD BACK

DEPARTMENT OF THE ARMY

OFFICIAL BUSINESS

Commander
US Army Communications-Electronics Command
and Fort Monmouth
ATTN: AMSEL-LC-ME-PS
Fort Monmouth, New Jersey 07703-5000

TEAR ALONG PERFORATED LINE

RECOMMENDED CHANGES TO EQUIPMENT TECHNICAL PUBLICATIONS



SOMETHING WRONG WITH THIS PUBLICATION?

THEN...JOT DOWN THE DOPE ABOUT IT ON THIS FORM. CAREFULLY TEAR IT OUT, FOLD IT AND DROP IT IN THE MAIL.

FROM: (PRINT YOUR UNIT'S COMPLETE ADDRESS)

DATE SENT

PUBLICATION NUMBER
TM 11-5985-263-24P

PUBLICATION DATE
1 January 89

PUBLICATION TITLE
Mast AB-903/G

BE EXACT PIN-POINT WHERE IT IS

PAGE NO.	PARA-GRAPH	FIGURE NO.	TABLE NO.
----------	------------	------------	-----------

IN THIS SPACE TELL WHAT IS WRONG AND WHAT SHOULD BE DONE ABOUT IT:

TEAR ALONG PERFORATED LINE

PRINTED NAME GRADE OR TITLE AND TELEPHONE NUMBER

SIGN HERE

DA FORM 2028-2
1 JUL 79

PREVIOUS EDITIONS ARE OBSOLETE

P.S.--IF YOUR OUTFIT WANTS TO KNOW ABOUT YOUR RECOMMENDATION MAKE A CARBON COPE OF THIS AND GIVE IT TO YOUR HEADQUARTERS.

FILL IN YOUR
UNIT'S ADDRESS

FOLD BACK

DEPARTMENT OF THE ARMY

OFFICIAL BUSINESS

Commander
US Army Communications-Electronics Command
and Fort Monmouth
ATTN: AMSEL-LC-ME-PS
Fort Monmouth, New Jersey 07703-5000

TEAR ALONG PERFORATED LINE

By Order of the Secretary of the Army:

CARL E. VUONO
General, United States Army
Chief of Staff

Official:

R.L. DILWORTH
Brigadier General, United States Army
The Adjutant General

DISTRIBUTION:

To be distributed in accordance with DA Form 12-51 unit and DS/GS requirements for AB-903/G.

