

TECHNICAL MANUAL

ORGANIZATIONAL, DIRECT SUPPORT AND  
GENERAL SUPPORT MAINTENANCE  
REPAIR PARTS AND SPECIAL TOOLS LIST

FOR

VOLTMETER (ME-545/G)  
(NSN 6625-01 -255-4547)

**Distribution authorized to the Department of Defense and DOD contractors only for official use or for administration or operational purposes. This determination was made on 27 May 1989. Other requests for this document will be referred to Commander, US Army Communications-Electronics Command and Fort Monmouth, ATTN: AMSEL-IC-ME-P, Fort Monmouth, NJ 07703-5000.**

**DESTRUCTION NOTICE — Destroy by any method that will prevent disclosure of contents or reconstruction of the document.**

---

HEADQUARTERS, DEPARTMENT OF THE ARMY

15 JANUARY 1990



Technical Manual  
 No. 11-6625-3200-24P

HEADQUARTERS  
 DEPARTMENT OF THE ARMY  
 Washington, DC, 15 January 1990

**ORGANIZATIONAL, DIRECT SUPPORT AND  
 GENERAL SUPPORT MAINTENANCE  
 REPAIR PARTS AND SPECIAL TOOLS LIST**

FOR

**VOLTMETER (ME-545/G)  
 (NSN 6625-01-255-4547)**

Current as of 1 October 1989

**REPORTING ERRORS AND RECOMMENDING IMPROVEMENTS**

You can help improve this manual. If you find any mistakes or if you know of a way to improve the procedures, please let us know. Mail your letter, DA Form 2028 (Recommended Changes to Publications and Blank Forms), or DA Form 2028-2 located in the back of this manual direct to: Commander, US Army Communications-Electronics Command and Fort Monmouth, ATTN: AMSEL-LC-ME-PS, Fort Monmouth, NJ 07703-5000. A reply will be furnished to you.

**TABLE OF CONTENTS**

		<b>Page</b>	<b>Illus/ Figure</b>
Section I	INTRODUCTION .....	1	
Section II.	REPAIR PARTS LIST .....	1-1	
Group 00	Voltmeter (ME-545/G) .....	1-1	1
Group 01	Meter Chassis .....	2-1	2
	0101 PCB Assy Processor .....	3-1	3
	0102 PCB Assy Detector .....	4-1	4
Section III.	SPECIAL TOOLS LIST .....	5-1	
Group 99	Cable Kit Extender .....	5-1	5
Section IV.	CROSS-REFERENCE INDEX .....	I-1	
	National Stock Number Index .....	I-1	
	Part Number Index .....	I-4	
	Figure and Item Number Index .....	I-11	



SECTION I  
INTRODUCTION

---

1. Scope

This manual lists and authorizes spares and repair parts; special tools; special test, measurement, and diagnostic equipment (TMDE); and other special support equipment required for performance of organizational, direct support, and general support maintenance of the ME-545/G. It authorizes the requisitioning, issue, and disposition of spares, repair parts, and special tools as indicated by the source, maintenance and recoverability (SMR) codes.

2. General

This Repair Parts and Special Tools List is divided into the following sections:

a. Section II. Repair Parts List. A list of spares and repair parts authorized by this RPSTL for use in the performance of maintenance. The list also includes parts which must be removed for replacement of the authorized parts. Parts lists are composed of functional groups in ascending numeric sequence, with the parts in each group listed in ascending item number sequence. Figure numbers are listed directly beneath the group header.

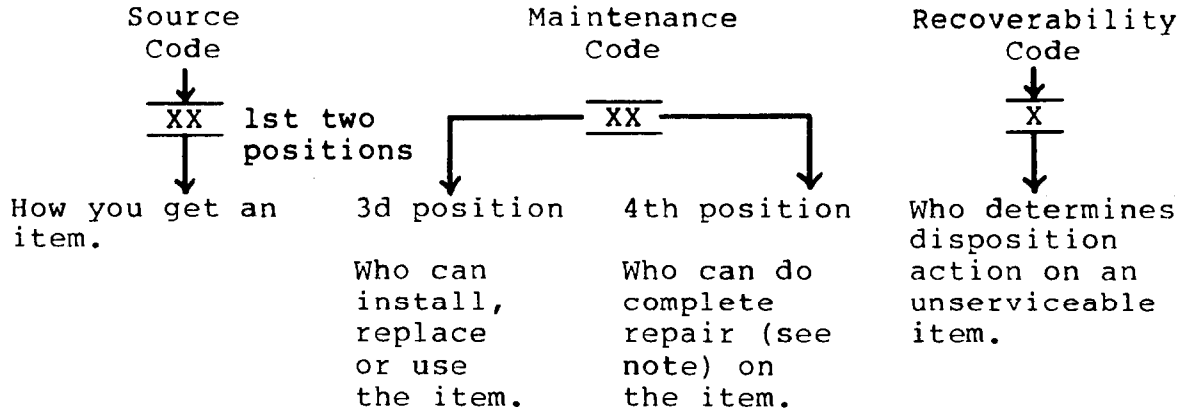
b. Section III. Special Tools List. A list of special tools, special TMDE, and other special support equipment authorized by this RPSTL (as indicated by Basis of Issue (BOI) information in (column (5))) for the performance of maintenance.

c. Section IV. Cross-Reference Indexes. A list, in National item identification number (NIIN) sequence, of all National stock numbered items appearing in the listing, followed by a list in alphameric sequence of all part numbers appearing in the listings. National stock numbers and part numbers are cross-referenced to each illustration figure and item number appearance. The figure number and item number index lists figure and item numbers in numeric sequence and cross-references National stock number, Federal Supply Code for Manufacturer and part numbers.

3. Explanation of Columns (Section II and III)

a. Item No. (Column (1)). Indicates the number used to identify items called out in the illustration.

b. SMR Code (Column (2)). The source, maintenance, and recoverability (SMR) code is a five-position code containing supply/requisitioning information, maintenance category authorization criteria, and disposition instructions, as shown in the following breakout:



NOTE

Complete repair: Maintenance capacity, capability, and authority to perform all corrective maintenance tasks of the "repair" function in a use/user environment in order to restore serviceability to a failed item.

(1) Source code. The source code tells you how to get an item needed for maintenance, repair, or overhaul of an end item/equipment. Explanations of source codes follows:

<u>Code</u>	<u>Explanation</u>
PA PB PC PD PE PF PG	Stocked items: use the applicable NSN to request/requisition items with these source codes. They are authorized to the category indicated by the code entered in the third position of the SMR code.

NOTE

Items coded PC are subject to deterioration.

KD KF KB	Items with these codes are not to be requested/requisitioned individually. They are part of a kit which is authorized to the maintenance category indicated in the third position of the SMR code. The complete kit must be requested and applied.
----------------	--

Code

Explanation

MO - Made at org/AVUM category  
 MF - Made at DS/AVIM category  
 MH - Made at GS category  
 ML - Made at Specialized Repair Activity (SRA)  
 MD - Made at Depot

Items with these codes are not to be requested/requisitioned individually. They must be made from bulk material which is identified by the part number in the description and usable on code (UOC) column and listed in the Bulk Material group of the repair parts list. If the item is authorized to you by the third position code of the SMR code, but the source code indicates it is made at a higher category, order the item from the higher category of maintenance.

AO - Assembled by org/AVUM category  
 AF - Assembled by DS/AVIM category  
 AH - Assembled by GS category  
 AL - Assembled by SRA  
 AD - Assembled by Depot

Items with these codes are not to be requested/requisitioned individually. The parts that make up the assembled item must be requisitioned or fabricated and assembled at the category of maintenance indicated by the source code. If the third position code of the SMR code authorizes you to replace the item, but the source code indicates the item is assembled at a higher category, order the item from the higher category of maintenance.

Code

Explanation

- XA - Do not requisition an "XA" coded item. Order its next higher assembly.
- XB - If an "XB" item is not available from salvage, order it using the FCSM and part number given.
- XC - Installation drawing, diagram, instruction sheet, field service drawing, that is identified by manufacturer's part number.
- XD - Item is not stocked. Order an "XD" coded item through normal supply channels using the FSCM and part number given, if no NSN is available.

NOTE

Cannibalization or controlled exchange, when authorized, may be used as a source of supply for items with the above source codes, except for those source coded "XA" or those aircraft support items restricted by requirements of AR 750-1.

(2) Maintenance code. Maintenance codes tell you the category of maintenance authorized to USE and REPAIR support items. The maintenance codes are entered in the third and fourth positions of the SMR code as follows:

(a) The maintenance code entered in the third position tells you the lowest maintenance category authorized to remove, replace, and use an item. The maintenance code entered in the third position will indicate authorization to one of the following categories of maintenance.

<u>Code</u>	<u>Application/Explanation</u>
C -	Crew or operator maintenance done within organizational or aviation maintenance.
O -	organizational or aviation unit category can remove, replace, and use the item.
F -	Direct support or aviation intermediate category can remove, replace, and use the item.
H -	General support category can remove, replace, and use the item.
L -	Specialized repair activity can remove, replace, and use the item.
D -	Depot category can remove, replace, and use the item.

NOTE

Some limited repair may be done on the item at a lower category of maintenance, if authorized by the Maintenance Allocation Chart (MAC) and SMR codes.

<u>Code</u>	<u>Application/Explanation</u>
O -	organizational or aviation unit is the lowest category that can do complete repair of the item.
F -	Direct support or aviation intermediate is the lowest category that can do complete repair of the item.
H -	General support is the lowest category that can do complete repair of the item.
L -	Specialized repair activity (designate the specialized repair activity) is the lowest category that can do complete repair of the item.
D -	Depot is the lowest category that can do complete repair of the item.



Code                                      Application/Explanation

- Z - Nonreparable. No repair is authorized,
- B - No repair is authorized. (No parts or special tools are authorized for the maintenance of a "B" coded item.)  
However, the item may be reconditioned by adjusting, lubricating, etc., at the user category.

(3) Recoverability code. Recoverability codes are assigned to items to indicate the disposition action on unserviceable items. The recoverability code is entered in the fifth position of the SMR Code as follows:

Recoverability codes                                      Application/Explanation

- z - Nonreparable item. When unserviceable, condemn and dispose of the item at the category of maintenance shown in the third position of SMR code.
- o - Reparable item. When uneconomically repairable, condemn and dispose of the item at organizational or aviation unit category.
- F - Reparable item. When uneconomically repairable, condemn and dispose of the item at direct support or aviation intermediate category.
- H - Reparable item. When uneconomically repairable, condemn and dispose of the item at general support category.
- D - Reparable item. When beyond lower category repair capability, return to depot. Condemnation and disposal of item not authorized below depot category.
- L - Reparable item. Condemnation and disposal not authorized below specialized repair activity (SRA).
- A - Item requires special handling or condemnation procedures because of specific reasons (e.g., precious metal content, high dollar value, critical material, or hazardous material). Refer to appropriate manuals/directives for specific instructions.

c. FSCM (Column (3)). The Federal supply Code for Manufacturer (FSCM) is a 5-digit numeric code which is used to identify the manufacturer, distributor, or Government agency, etc., that supplies the item.

d. Part Number (Column (4)). Indicates the primary number used by the manufacturer (individual, company, firm, corporation, or Government activity), which controls the design and characteristics of the item by means of its engineering drawings, specifications, standards, and inspection requirements to identify an item or range of items.

NOTE

When you use an NSN to requisition an item, the item you receive may have a different part number from the part ordered.

e. Description and Usable on Code (UOC) (Column (5)). This column includes the following Information.

(1) The Federal item name and, when required, a minimum description to identify the item.

(2) In the Special Tools section, the basis of issue (BOI) appears as the last line in the entry for each special tool, special TMDE, and other special support equipment. When density of equipments supported exceeds density spread indicated in the basis of issue, the total authorization is increased proportionately.

(3) The statement "END OF FIGURE" appears just below the last item description in Column (5) for a given figure in both section II and section III.

f. Qty (Column (6)). Indicates the quantity of the item used in the breakout shown on the illustration figure, which is prepared for a functional group, subfunctional group, or an assembly. A "v" appearing in this column in lieu of a quantity indicates that the quantity is variable and the quantity may vary from application to application.

4. Explanation of Columns (Section IV)

a. National Stock Number (NSN) Index.

(1) Stock number column. This column lists the NSN by National item identification number (NIIN) sequence. The NIIN consists of the last nine digits of the NSN. When using this column to locate an item, ignore the first four digits of the NSN. When requisitioning items use the complete NSN (13 digits).

(2) Fig. Column. This column lists the number of the figure where the item is identified\located. The illustrations are in numerical sequence in sections II and III.

(3) Item column. The item number identifies the item associated with the figure listed in the adjacent Fig. column. This item is also identified by the NSN listed on the same line.

b. Part Number Index. Part numbers in this index are listed by part number in ascending alphameric sequence.

(1) FSCM column. This column lists the Federal supply code for manufacturer (FSCM).

(2) Part number column. This column indicates the part number assigned to the item.

(3) Stock number column. This column lists the National stock number for the associated part number and manufacturer identified in the part number and FSCM columns to the left.

(4) Fig. column. This column lists the number of the figure where the item is identified/located in sections II and III.

(5) Item column. The item number is that number assigned to the item as it appears in the figure referenced in the adjacent figure number column.

sc. Figure and Item Number Index.

(1) Fig. column. This column lists the number of the figure where the item is identified/located in sections II and III.

(2) Item column. The item number is that number assigned to the item as it appears in the figure referenced in the adjacent figure number column.

(3) Stock number column. This column lists the National stock number for the item.

(4) FSCM column. The Federal supply code for manufacturer (FSCM) is a 5-digit numeric **code** used to identify the manufacturer, distributor, or Government agency, etc. , that supplies the item.

(5) Part number column. Indicates the primary number used by the manufacturer (individual, firm, corporation, or Government activity) , which controls the design and characteristics of the item by means of its engineering drawings, specifications, standards, and inspection requirements to identify an item or range of item.

5. Special Information

a. Associated Publications. The publication listed below pertains to the ME-545/G and its components

TM 11-6625-3200-14, Voltmeter ME-545/G

b. National Stock Numbers. National stock numbers (NSN'S) that are missing from P source coded items have been applied for and will be added to this TM by future change/revision when they are entered in the Army Master Data File (AMDF). Until the NSN'S are established and published, submit exception requisitions to: Commander, US Army Communications-Electronics Command and Fort Monmouth, ATTN : AMSEL-LC-MM, Fort Monmouth, NJ 07703-5000 for the part required to support your equipment.

## 6. How to Locate Repair Parts

### a. When National stock number or part number is not known.

(1) First. Using the table of contents, determine the assembly group or subassembly group to which the item belongs. This is necessary since figures are prepared for assembly groups and subassembly groups, and listings are divided into the same groups.

(2) Second. Find the figure covering the assembly group or subassembly group to which the item belongs.

(3) Third. Identify the item on the figure and note the item number.

(4) Fourth. Refer to the Repair Parts List for the figure to find the part number for the item number noted on the figure.

(5) Fifth. Refer to the Part Number Index to find the NSN, if assigned.

### b. When National stock number or part number is known.

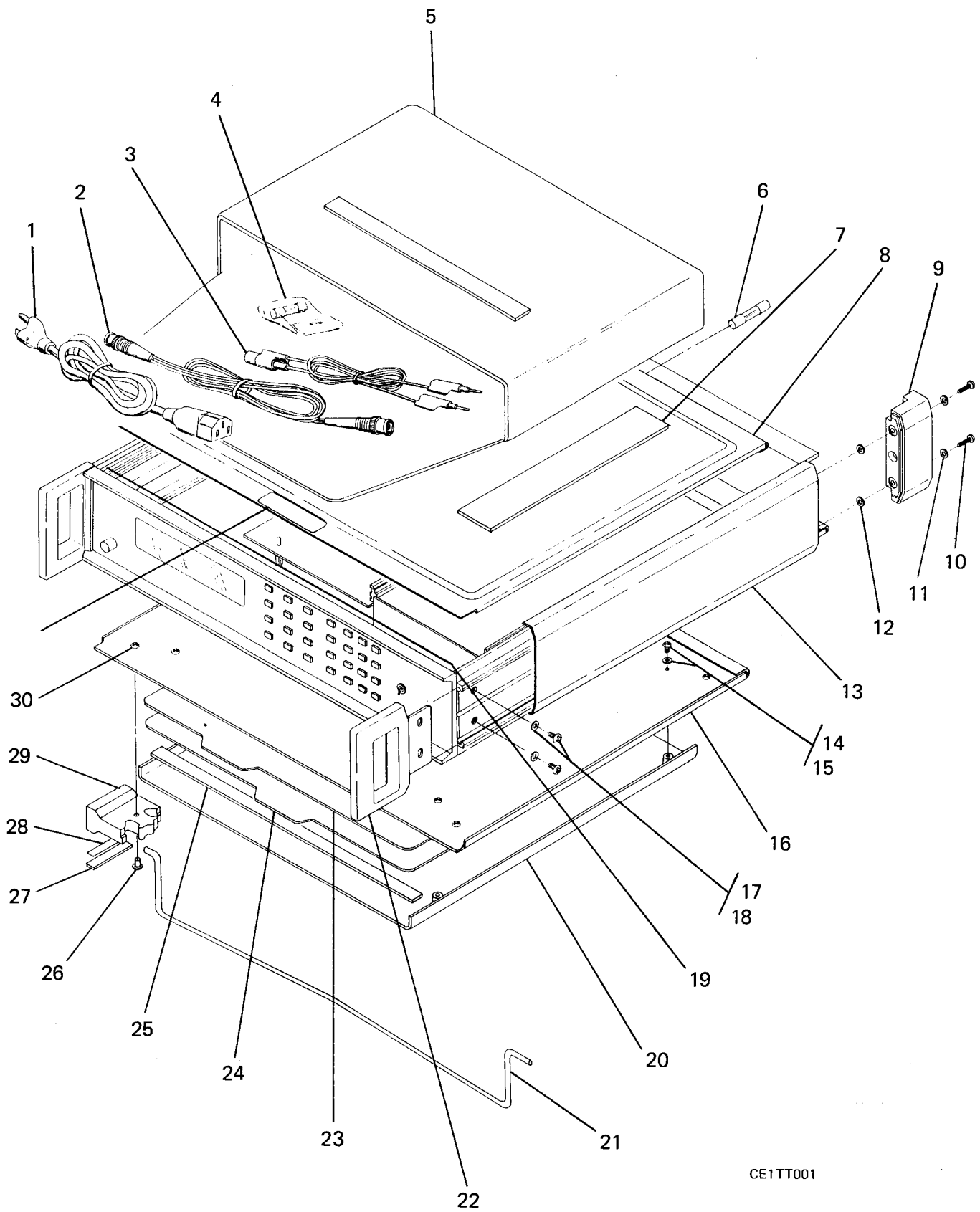
(1) First. Using the index of National stock numbers and part numbers, find the pertinent National stock number or part number. The NSN index is in National item identification number (NIIN) sequence (para 4a(1)). The part numbers in the part number index are listed in ascending alphameric sequence (para 4b). Both indexes cross-reference you to the illustration figure and item number of the item you are looking for.

(2) Second. After finding the figure and item number, verify that the item is the one you're looking for, then locate the item number in the repair parts list for the figure.

## 7. Abbreviations

Not applicable.





CE1TT001

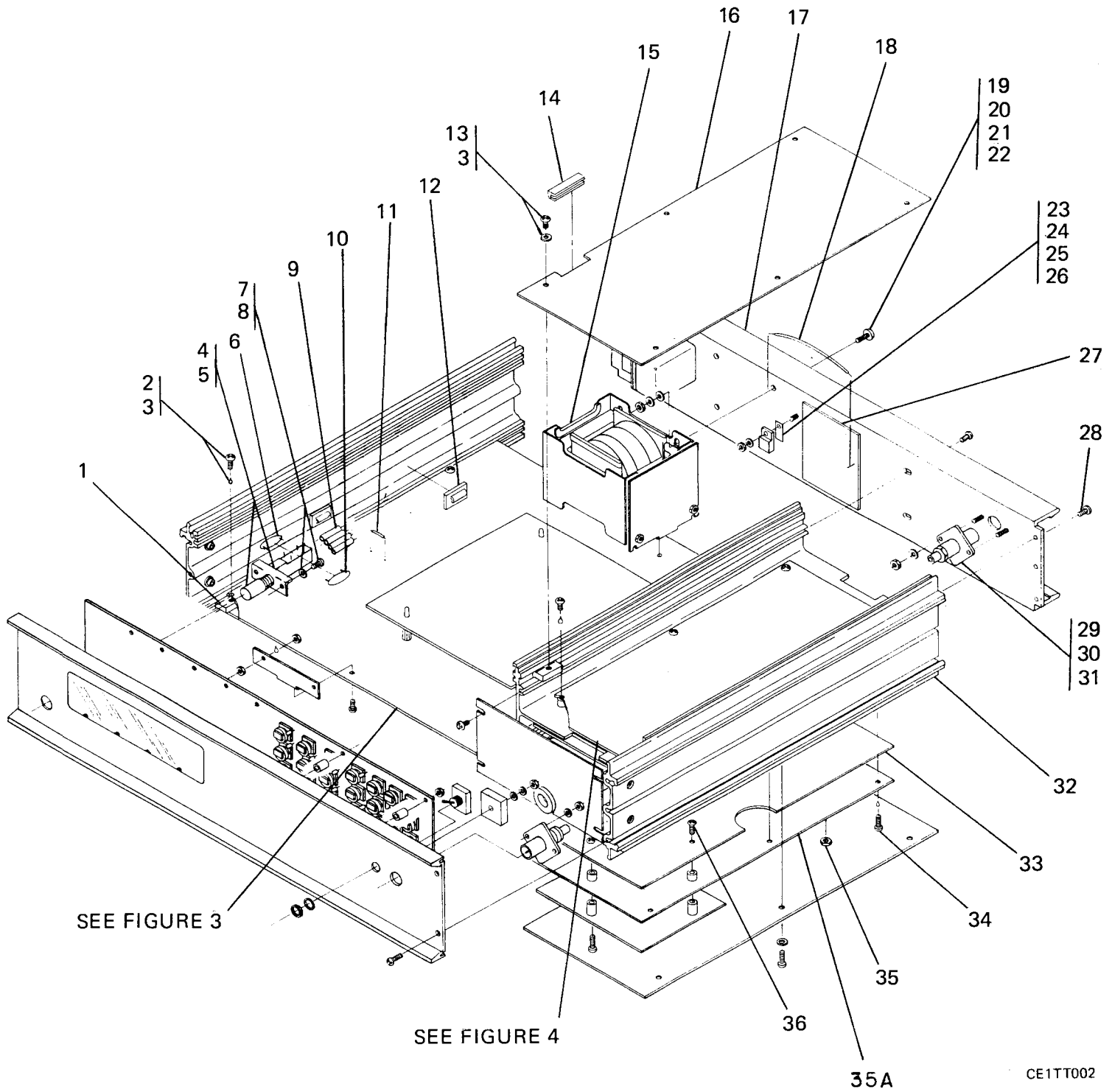
Figure 1. Voltmeter, ME-545/G (Sheet 1 of 1)

(1) ITEM NO	(2) SMR CODE	(3) FSCM	(4) PART NUMBER	(5) DESCRIPTION AND USABLE ON CODE (UOC)	(6) QTY
GROUP 00 VOLTMETER(ME-545/G)					
FIG. 1					
1	PAOZZ	21793	600620	CABLE ASSEMBLY, SPEC	1
2	PAOZZ	08505	1026-36	CABLE ASSEMBLY,RADI	1
3	PAOZZ	05276	2631	LEAD,TEST	1
4	PAOZZ	81349	F02B250V1-4A	FUSE,CARTRIDGE	1
5	XBHZZ	21793	404614	KIT,SHIPPING	1
6	PAOZZ	21793	920204	FUSE,SLOW BLOW	1
7	XBHZZ	21793	920952	STRIP FASTNER HOOK	1
8	XBHZZ	21793	454385	PANEL COVER	1
9	XBHZZ	21793	454319	BUMPER,RUBBER	2
10	PAHZZ	21793	610909	SCREW,TAPPING,THREA	4
11	PAHZZ	55972	W06SS	WASHER,FLAT	4
12	PAHZZ	13764	17W02811	WASHER,FLAT	4
13	XBHZZ	21793	454539	COVER SIDE	2
14	PAHZZ	21793	615014	SCREW,MACHINE	4
15	PAHZZ	K8918	24-2800	WASHER,SLOTTED	4
16	XBHZZ	21793	R-13-1887	PANEL COVER MODIFIE	1
17	PAHZZ	21793	616342	SCREW,MACHINE	4
18	PAHZZ	K8918	24-2802	WASHER,LOCK	4
19	XBHZZ	21793	R-23-9074	STRIP RF SHIELDING	1
20	XBHZZ	21793	455399	TRAY INSTR CARD	1
21	XBHZZ	21793	454354	BAIL	1
22	XBHZZ	21793	454393	HANDLE ASSY	2
23	XCHZZ	21793	R-13-1927	CARD INSTRUCTION	1
24	XCHZZ	21793	R-13-1948	CARD INSTRUCTION	1
25	XBHZZ	21793	R-24-6052	TAPE FOAM	1
26	XBHZZ	21793	920958	BUMBER BUTTON	4
27	XBHZZ	21793	454355	INSERT RUBBER FOOT	4
28	XBHZZ	21793	920504	ADHESIVE	1
29	XBHZZ	21793	454621	FOOT BOTTOM COVER	1
30	PAOZZ	08226	PHT-8-18X3/8-SS- ABLK	SCREW,MACHINE	4

END OF FIGURE

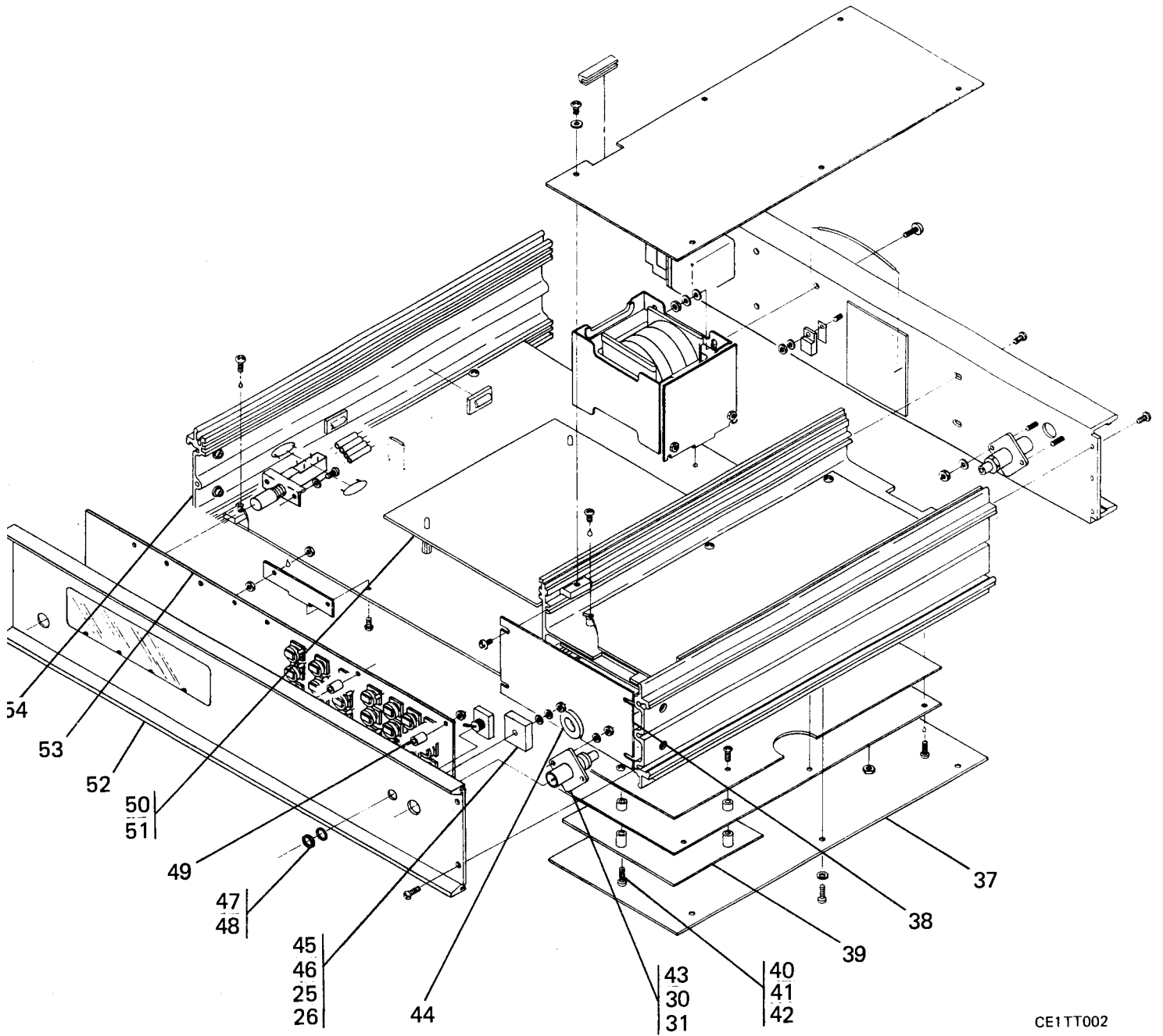






CE1TT002

Figure 2. Meter Chassis (Sheet 1 of 2)



CE1TT002

Figure 2. Meter Chassis (Sheet 2 of 2)

(1) ITEM NO	(2) SMR CODE	(3) FSCM	(4) PART NUMBER	(5) DESCRIPTION AND USABLE ON CODE (UOC)	(6) QTY
GROUP 01 METER CHASSIS					
FIG. 2					
1	XBHZZ	21793	454389	BLOCK MOUNTING	18
2	XBHZZ	21793	920962	ADHESIVE LOCTITE	1
3	PAHZZ	21793	616329	SCREW, MACHINE	18
4	XBHZZ	21793	921021	BUTTON RED	1
5	PAHZZ	31918	MSAM	SWITCH, ROTARY	1
6	PAHZZ	28480	0160-4439	CAPACITOR, FIXED, MET	1
7	PAHZZ	K8918	24-2801	WASHER, LOCK	2
8	PAHZZ	57730	7985/A2-M3X6	SCREW, MACHINE	4
9	XBHZZ	21793	500202	TUBING SHRINK	1
10	PAHZZ	28480	0160-4439	CAPACITOR, FIXED, MET	1
11	PAHZZ	92194	299	WIRE, ELECTRICAL	1
12	PAHZZ	21793	600961	CLIP, SPRING TENSION	2
13	PAHZZ	K8918	24-2805	WASHER, SLOTTED	12
14	PAHZZ	06915	NGS-2	GROMMET NONMETALLIC	1
15	PAHZZ	21793	R-17-4097	TRANSFORMER, POWER	1
16	XBHZZ	21793	R-13-1859	LID	1
17	XBHZZ	21793	R-11-1545	PANEL ASSY REAR	1
18	PAHZZ	81349	M22759/11-20-0	WIRE, ELECTRICAL	1
19	PAHZZ	21793	616343	SCREW, MACHINE SCREW	4
20	PAHZZ	55972	W06SS	WASHER, FLAT	4
21	PAHZZ	K8918	24-2802	WASHER, LOCK	4
22	PAHZA	21793	617044	NUT, PLAIN, HEXAGON	4
23	PAHZZ	K8918	23-9080	INSULATOR, WASHER	1
24	PAHZZ	27014	LM340AT-5.0	MICROCIRCUIT, LINEAR	1
25	PAHZZ	K8918	24-2801	WASHER, LOCK	2
26	PAHZZ	A0199	2128-08-500	NUT, PLAIN, HEXAGON	18
27	PAHZZ	21793	R-19-1018-001	CIRCUIT CARD ASSEMB	1
28	PAHZZ	97525	322064-05	SCREW, TAPPING, THREA	12
29	PAHZZ	21793	R-23-3198	CONNECTOR, RECEPTACL	1
30	PAHZZ	K8918	24-2804	WASHER, LOCK	4
31	PAHZZ	08226	B18241D020	NUT, PLAIN, HEXAGON	4
32	XBHZZ	21793	R-11-1543	PANEL ASSY SIDE	1
33	XBHZZ	21793	R-13-1900	SCREEN SHIELDING	1
34	PAHZZ	21793	616317	SCREW, MACHINE	12
35	PAHZZ	A0199	2128-08-500	NUT, PLAIN, HEXAGON	1
35A	PAHDD	21793	R-19-1021	CIRCUIT CAR ASSEMB	1
36	PAHZZ	08226	B1867DA030120	SCREW, CAP, HEXAGON H	4
37	XBHZZ	21793	R-13-1860	LID	1
38	XBHZZ	21793	R-13-1861	PLATE END	1
39	XBHZZ	21793	R-13-1931	SCREEN SHIELDING	1
40	PAHZZ	08226	B1867DA030060	SCREW, CAP, SOCKET HE	3
41	PAHZZ	K4492	HTA-3050-16N	SPACER, SLEEVE	3
42	PAHZZ	K4492	HTL-3050-05	SPACER, SLEEVE	4
43	PAHZZ	F6507	A141-410-UK-001	CONNECTOR, RECEPTACL CONN ELECT RECPT	1
44	PAHZZ	96906	MS35489-4	GROMMET, NONMETALLIC	1
45	PAHZZ	14936	KBPC602	RECTIFIER, SEMICONDU	1

(1) ITEM NO	(2) SMR CODE	(3) FSCM	(4) PART NUMBER	(5) DESCRIPTION AND USABLE ON CODE (UOC)	(6) QTY
46	PAHZZ	18876	10581431-23	WASHER, FLAT	1
47	PAHZZ	96906	MS75029-23	SWITCH, TOGGLE	1
48	PAHZZ	21793	R-14-1328	WASHER, FLAT	1
49	PAHZZ	21793	R-14-1551	SPACER, RING	4
50	PAHZZ	21793	R-19-1017-001	CIRCUIT CARD ASSEMB	1
51	XBHZZ	21793	R-11-1492-001	GPIB ASSY KIT	1
52	XBHZZ	21793	R-11-1544	PANEL ASSY FRONT	1
53	PAHZZ	21793	R-19-1023-001	CIRCUIT CARD ASSEMB	1
54	XBHZZ	21793	R-11-1463	PANEL ASSY SIDE	1

END OF FIGURE

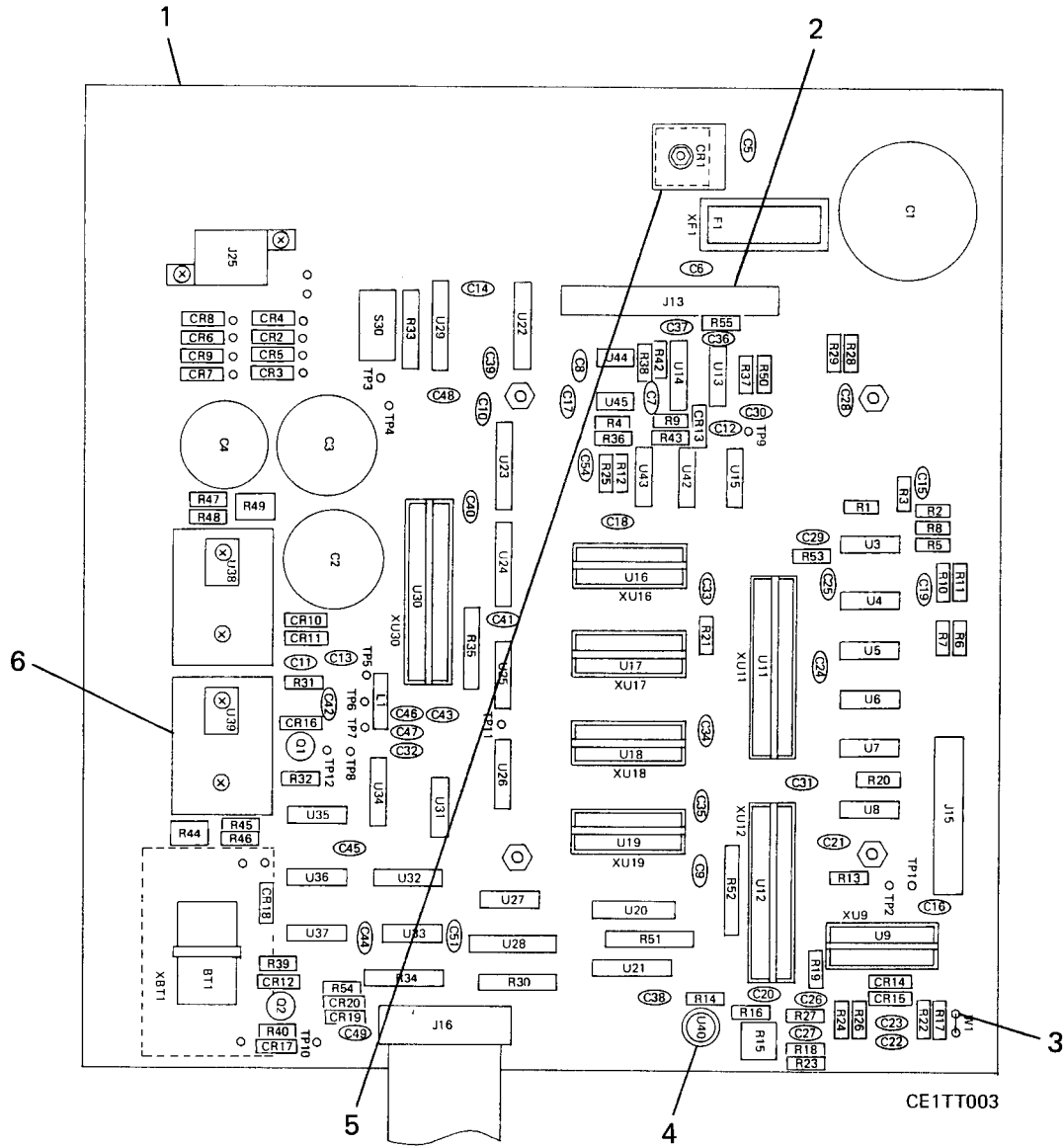


Figure 3. PCB Assy Processor (Sheet 1 of 6)

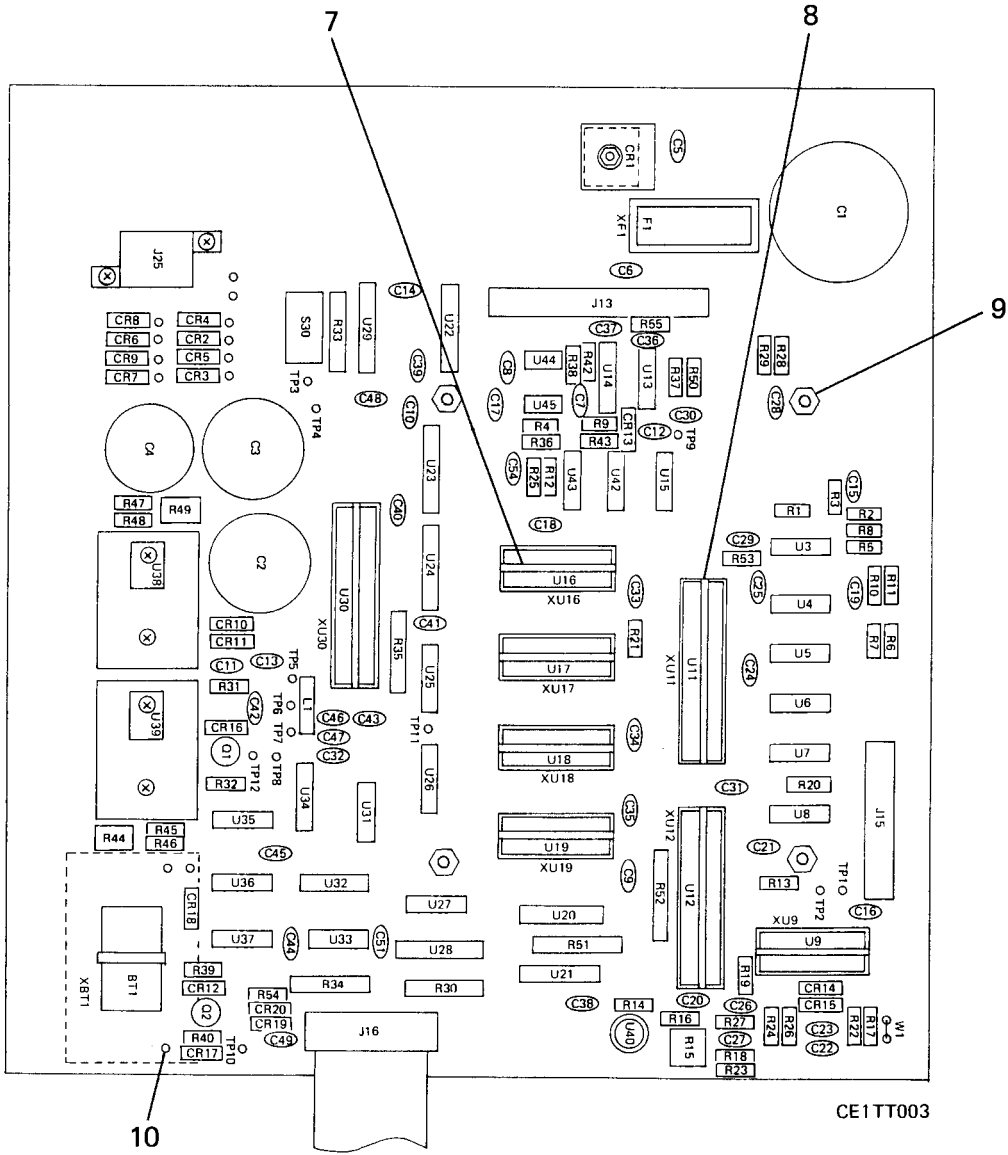


Figure 3. PCB Assy Processor (Sheet 2 of 6)

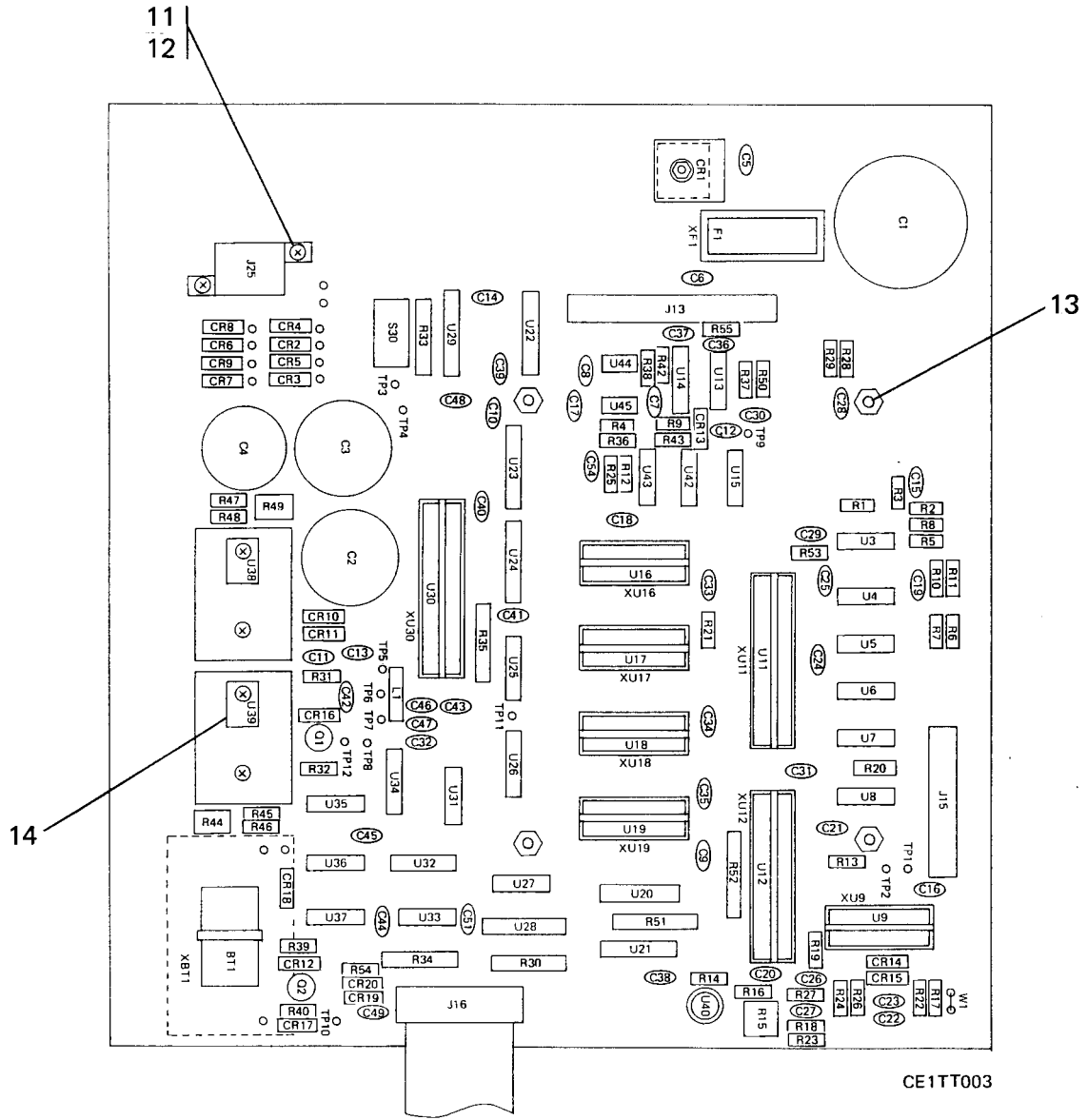
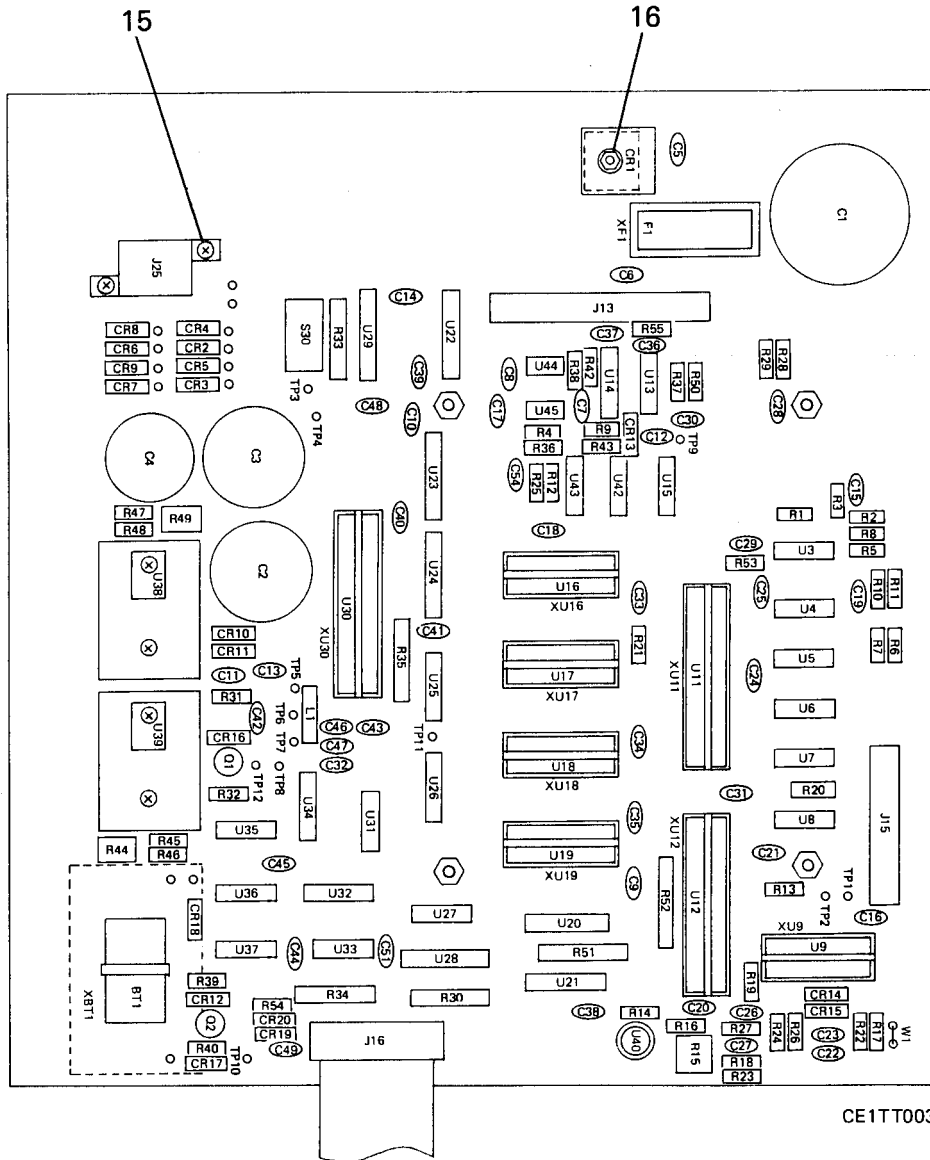


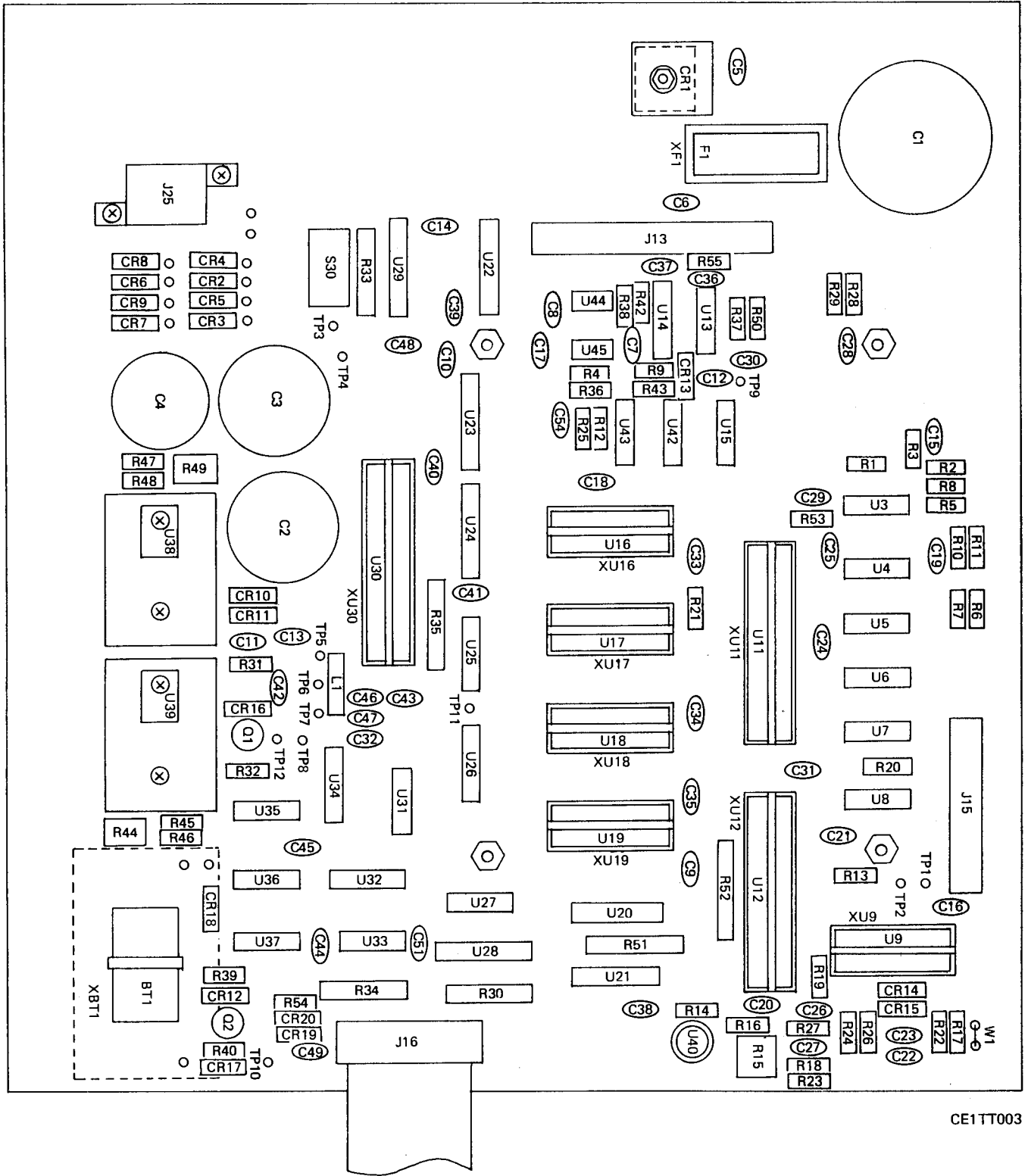
Figure 3. PCB Assy Processor (Sheet 3 of 6)



CE1TT003

Figure 3. PCB Amy Processor (Sheet 4 of 6)





CE1TT003

Figure 3. Assy Processor (Sheet 5 of 6)

## Section II

TM 11-6625-3200-24P

REF. DESIG.	ITEM NO.	REF. DESIG.	ITEM NO.	REF. DESIG.	ITEM NO.	REF. DESIG.	ITEM NO.	REF. DESIG.	ITEM NO.
BT1	17	C40	21	R1	46	R42	70	U17	87
CI	18	C41	21	R2	47	R43	70	U18	88
C2	19	C42	23	R5	48	R44	71	U19	89
C3	19	C43	21	R4	49	R45	72	U20	90
C4	20	C44	21	R 5	50	R46	73	U21	90
C5	21	C45	21	R6	47	R47	74	U22	91
C6	21	C46	30	R7	48	R48	75	U23	92
C7	22	C47	30	R8	51	R49	71	U24	92
C8	22	C48	21	R9	52	R50	55	U25	93
C9	23	C49	22	R10	50	R51	76	U26	94
C10	23	C51	24	R11	53	R52	76	U27	95
CI 1	23	C54	22	R12	49	R53	46	U28	96
C12	23	CR1	31	R13	54	R54	46	U29	96
C13	23	CR2	32	R14	55	R55	46	U30	97
C14	21	CR3	32	R15	56	S1	77	U31	98
C15	26	CR4	32	R16	57	TP 1	78	U32	93
C16	24	CR5	32	R17	55	TP2	78	U33	99
C17	25	CR6	32	R18	58	TP3	78	U34	93
CI 8	22	CR7	32	R19	59	TP4	78	U35	100
CI 9	26	CR8	32	R20	60	TP5	78	U36	101
C20	22	CR9	32	R21	46	TP6	78	U37	102
C21	24	CR10	32	R22	55	TP7	78	U38	103
C22	22	CR11	32	R23	51	TP8	78	U39	104
C23	22	CR12	33	R24	51	TP9	78	U40	105
C24	24	CR13	34	R25	61	TP10	78	U42	86
C25	24	CR14	33	R26	62	TP11	78	U43	106
C26	27	CR15	33	R27	63	TP12	78	U44	107
C27	28	CR16	35	R28	64	U3	79	U45	108
C28	21	CR17	36	R29	65	U4	80	WI	109
C29	21	CR18	36	R30	66	U5	79	XBT1	110
C30	29	CR19	37	R31	55	U6	79	XF1	111
C31	21	CR20	37	R32	67	U7	79	XU4	112
C32	21	F1	38	R33	66	U8	79	XU9	113
C33	21	J13	39	R34	66	U9	81	XU11	114
C34	21	J15	40	R35	66	U11	82	XU12	114
C35	21	J16	41	R36	68	U12	82	XU16	113
C36	21	J25	42	R37	55	U13	83	XU17	113
C37	21	L1	43	R38	47	U14	84	XU18	113
C38	22	Q1	44	R39	69	U15	85	XU19	113
C39	21	Q2	45	R40	70	U16	86	XU30	114

Figure 3. PCB Assy Processor (Sheet 6 of 6)

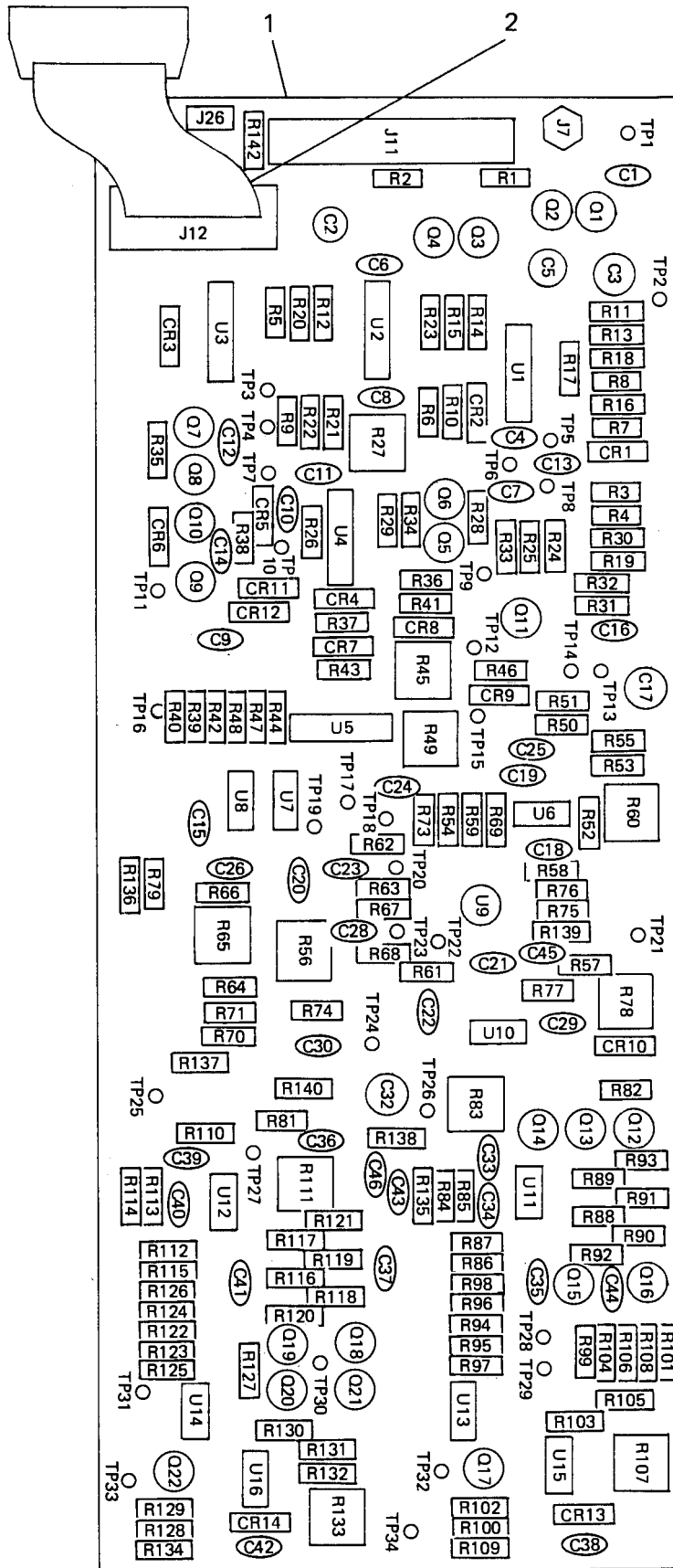
CE1TT003

(1) ITEM NO	(2) SMR CODE	(3) FSCM	(4) PART NUMBER	(5) DESCRIPTION AND USABLE ON CODE (UOC)	(6) QTY
GROUP 0101 PCB ASSY PROCESSOR					
FIG. 3					
2	PAHZZ	53387	3518	POLARIZING KEY,ELEC	4
3	PAHZZ	22526	76151-002	CONTACT,ELECTRICAL	4
4	PAHZZ	21793	920007	INSULATOR,DISK	1
5	PAHZZ	K1660	TV5	HEAT SINK,ELECTRICA	1
6	PAHZZ	K1660	TV21	HEAT SINK,ELECTRICA	2
7	PAHZZ	96906	MS3367-5-9	STRAP,TIEDOWN,ELECT	5
8	PAHZZ	06383	PLT2M	STRAP,TIEDOWN,ELECT	4
9	PAHZZ	06915	TCBS-12	POST-ELECTRICAL-MEC	4
10	PAHZZ	19738	AVLUG1107/0208	TERMINAL,LUG	11
11	PAHZZ	A0199	2128-08-500	NUT,PLAIN,HEXAGON	7
12	PAHZZ	K8918	24-2801	WASHER,LOCK	7
13	PAHZZ	08226	PK75XZ6-5	SCREW,TAPPING TREA SCREW SELF-TAP	4
14	PAHZZ	13103	250	INSULATING COMPOUND	1
15	PAHZZ	57730	7985/A2-M3X8	SCREW,MACHINE	6
16	PAHZZ	21793	616320	SCREW,MACHINE	1
17	XBHZZ	31586	LS-120/SOLDER-TA GS	BATTERY LITHIUM	1
18	PAHZZ	K0004	2222-050-55223	CAPACITOR,FIXED,ELE	1
19	PAHZZ	56289	80S332P050KB5	CAPACITOR,FIXED,ELE	2
20	PAHZZ	56289	80D332P025HB5	CAPACITOR,FIXED,ELE	1
21	PAHZZ	56289	1C20Z5U473M050B	CAPACITOR,FIXED,CER	19
22	PAHZZ	04222	3439-100E-104M	CAPACITOR,FIXED,CER	9
23	PAHZZ	55680	ULB1E470M	CAPACITOR,FIXED,ELE	6
24	PAHZZ	21793	100063	CAPACITOR,FIXED,CER	5
25	PAHZZ	21793	110141	CAPACITOR,FIXED TAN	1
26	PAHZZ	K1365	MKC2.047UF+10%63 V	CAPACITOR POLYCARB	2
27	PAHZZ	81349	CMR04E680F0DR	CAPACITOR,FIXED,MIC	1
28	PAHZZ	60705	561CR3LBA102EH27 1K	CAPACITOR,FIXED,CER	1
29	PAHZZ	56289	10TST33	CAPACITOR,FIXED,CER	1
30	PAHZZ	60705	561CU2JBA102EE27 OK	CAPACITOR,FIXED,CER	2
31	PAHZZ	21793	R-22-1662	SEMICONDUCTOR,DEVIC	1
32	PAHZZ	81349	JAN1N3611	SEMICONDUCTOR DEVIC	10
33	PAHZZ	80131	1N5730B	SEMICONDUCTOR DEVIC	3
34	PAHZZ	81349	JAN1N5712	SEMICONDUCTOR DEVIC	1
35	PAHZZ	35784	BZX79C10	SEMICONDUCTOR DEVIC	1
36	PAHZZ	21793	210017	SEMICONDUCTOR DEVIC	2
37	PAHZZ	80131	1N4149	SEMICONDUCTOR	2
38	PAHZZ	75915	31301-6	FUSE,CARTRIDGE	1
39	PAHZZ	76381	3431-6302	CONNECTOR,RECEPTACL	1
40	PAHZZ	75037	3428-2302	CONNECTOR ELEC HDR	1
41	PAHZZ	21793	10-2871	CABLE ASSEMBLY,POWE	1
42	PAHZZ	30010	229-90062G	CONNECTOR,RECEPTACL	1
43	PAHZZ	K8550	10-10-0537-10	REACTOR	1
44	PAHZZ	35784	BC109	TRANSISTOR	1

(1) ITEM NO	(2) SMR CODE	(3) FSCM	(4) PART NUMBER	(5) DESCRIPTION AND USABLE ON CODE (UOC)	(6) QTY
45	PAHZZ	22119	ZTX450	TRANSISTOR	1
46	PAHZZ	81349	RCR07G332JS	RESISTOR, FIXED, COMP	5
47	PAHZZ	81349	RCR07G103JS	RESISTOR, FIXED, COMP	2
48	PAHZZ	81349	RCR07G563JS	RESISTOR, FIXED, COMP	2
49	PAHZZ	81349	RCR07G105JS	RESISTOR, FIXED, COMP	2
50	PAHZZ	81349	RCR07G822JS	RESISTOR, FIXED, COMP	2
51	PAHZZ	81349	RCR07G104JS	RESISTOR, FIXED, COMP	2
52	PAHZZ	21793	000473	RESISTOR, FIXED, WIRE	1
53	PAHZZ	81349	RCR07G154JS	RESISTOR, FIXED, COMP	1
54	PAHZZ	81349	RCR07G223JS	RESISTOR, FIXED, COMP	1
55	PAHZZ	81349	RCR07G222JS	RESISTOR, FIXED, COMP	6
56	PAHZZ	32997	3386F-1-102	RESISTOR, VARIABLE, N	1
57	PAHZZ	81349	RNC55H5901BS	RESISTOR, FIXED, FILM	1
58	PAHZZ	81349	RNC55H1133DS	RESISTOR, FIXED, FILM	1
59	PAHZZ	81349	RNC55H1004BS	RESISTOR, FIXED, FILM	1
60	PAHZZ	91637	CSC05A-01-223J	RESISTOR NETWORK, FI	1
61	PAHZZ	81349	RCR07G225JS	RESISTOR, FIXED, COMP	1
62	PAHZZ	81349	RCR07G122JS	RESISTOR, FIXED, COMP	1
63	PAHZZ	81349	RCR07G101JS	RESISTOR, FIXED, COMP	1
64	PAHZZ	81349	RCR07G392JS	RESISTOR, FIXED, COMP	1
65	PAHZZ	81349	RCR07G152JS	RESISTOR, FIXED, COMP	1
66	PAHZZ	91637	CSC09A-01-332J	RESISTOR, NETWORK, FI	4
67	PAHZZ	81349	RCR07G472JS	RESISTOR, FIXED, COMP	1
68	PAHZZ	81349	RCR07GF335JS	RESISTOR, FIXED, COMP	1
69	PAHZZ	81349	RCR07G821JS	RESISTOR, FIXED, COMP	1
70	PAHZZ	81349	RCR07G100JS	RESISTOR, FIXED, COMP	3
71	PAHZZ	81349	RJR24FW102R	RESISTOR, VARIABLE, N	2
72	PAHZZ	81349	RNC55H3901BS	RESISTOR, FIXED, FILM	1
73	PAHZZ	81349	RNC55J2201BS	RESISTOR, FIXED, FILM	1
74	PAHZZ	14240	HA-55-820-.1%-50 PPM	RESISTOR, FIXED	1
75	PAHZZ	81349	RNC55H4301BS	RESISTOR, FIXED, FILM	1
76	PAHZZ	32997	4310R-101-103	RESISTOR NETWORK, FI	2
77	PAHZA	28480	3101-2371	SWITCH, SLIDE	1
78	PAHZZ	30010	20-2136J	CONNECTOR ASSEMBLY,	12
79	PAHZZ	81349	M38510/11201BCB	MICROCIRCUIT, LINEAR	5
80	PAHZZ	21793	R-17-1026	CONNECTOR ASSEMBLY	1
81	PAHZZ	81349	M38510/05802BCB	MICROCIRCUIT, DIGITA	1
82	PAHZZ	15818	TSC8750CJ	MICROCIRCUIT, DIGITA	2
83	PAHZZ	04713	MC6821P	MICROCIRCUIT, DIGITA	1
84	PAHZZ	27014	DM54L42AJ/883B	MICROCIRCUIT, DIGITA	1
85	PAHZZ	81349	M38510/31401BEB	MICROCIRCUIT, DIGITA	1
86	PAHZZ	01295	SN74HC00N	MICROCIRCUIT, DIGITA	2
87	PAHZZ	21793	R-22-8566	MICROCIRCUIT, DIGITA	1
88	PAHZZ	21793	R-22-8565	MICROCIRCUIT, DIGITA	1
89	PAHZZ	21793	R-22-8564	MICROCIRCUIT, DIGITA	1
90	PAHZZ	21793	R-22-8563	MICROCIRCUIT, DIGITA	2
91	PAHZZ	81349	M38510/24502BVB	MICROCIRCUIT, DIGITA	1
92	PAHZZ	01295	74ALS245A-1N	MICROCIRCUIT DIGITA	2
93	PAHZZ	81349	M38510/32403BRB	MICROCIRCUIT, DIGITA	3
94	PAHZZ	81349	M38510/30101BEB	MICROCIRCUIT, DIGITA	1
95	PAHZZ	81349	M38510/30702BEB	MICROCIRCUIT, DIGITA	1

(1) ITEM NO	(2) SMR CODE	(3) FSCM	(4) PART NUMBER	(5) DESCRIPTION AND USABLE ON CODE (UOC)	(6) QTY
96	PAHZZ	81349	M38510/30009BCB	MICROCIRCUIT,DIGITA	2
97	PAHZZ	81349	M38510/32401BRB	MICROCIRCUIT,DIGITA	1
98	PAHZZ	04713	MC6802P	MICROCIRCUIT,DIGITA	1
99	PAHZZ	81349	M38510/30102BCB	MICROCIRCUIT,DIGITA	1
100	PAHZZ	81349	M38510/00803BCB	MICROCIRCUIT,DIGITA	1
101	PAHZZ	05869	725000-813	MICROCIRCUIT,DIGITA	1
102	PAHZZ	81349	M38510/30003BCB	MICROCIRCUIT,DIGITA	1
103	PAHZZ	81349	M38510/31005BCB	MICROCIRCUIT,DIGITA	1
104	PAHZZ	07263	UA79MGUIC	REGULATOR,VOLTAGE	1
105	PAHZZ	07263	UA78MGUIC	REGULATOR,VOLTAGE	1
106	PAHZZ	22119	ZN458B	MICROCIRCUIT,DIGITA	1
107	PAHZZ	27014	MM74HC4075	MICROCIRCUIT,DIGITA	1
108	PAHZZ	67268	59628868501PA	MICROCIRCUIT,DIGITA	1
109	PAHZZ	18714	CA3078AE	MICROCIRCUIT,LINEAR	1
110	XBHZZ	71279	450-2213-01-03-1 0	JACK JUMPER WIRE JACK JUMPER WIRE	1
111	PAHZZ	21793	R-13-1941	INSULATOR PLATE	1
112	PAHZZ	U0928	F27/PC	FUSEHOLDER,BLOCK FUSEHOLDER PC MOUNT	1
113	PAHZZ	81349	M83734/3-015	SOCKET,PLUG-IN ELEC	5
114	PAHZZ	06776	ICL-246-S7T	SOCKET,PLUG-IN ELEC	3

END OF FIGURE



CE1TT004

Figure 4. PCB Assembly, Detector (Sheet 1 of 3)

REF. DESIG.	ITEM NO.	REF. DESIG.	ITEM NO.	REF. DESIG.	ITEM NO.	REF. DESIG.	ITEM NO.	REF. DESIG.	ITEM NO.
C1	3	C42	18	Q18	35	R35	57	R75	79
C2	4	C43	12	Q19	35	R36	58	R76	80
C3	5	C44	19	Q20	34	R37	59	R77	78
C4	6	C45	20	Q21	36	R38	60	R78	54
C5	4	C46	21	Q22	31	R39	61	R79	38
C6	7	CR1	22	R1	38	R40	61	R81	81
C7	8	CR2	22	R2	39	R41	62	R82	81
C8	7	CR3	23	R3	40	R42	61	R83	82
C9	9	CR4	24	R4	41	R43	51	R84	68
C10	7	CR5	25	R5	42	R44	63	R85	68
C11	10	CR6	24	R6	43	R45	64	R86	83
C12	11	CR7	24	R7	44	R46	63	R87	84
C13	8	CR8	24	R8	45	R47	53	R88	42
C14	12	CR9	25	R9	46	R48	65	R89	42
C15	13	CR10	25	R10	44	R49	64	R90	63
C16	11	CR11	26	RI1	47	R50	66	R91	63
C17	5	CR12	24	R12	43	R51	67	R92	38
C18	14	CR13	26	R13	48	R52	68	R93	38
C19	15	CR14	26	R14	49	R53	69	R94	63
C20	16	J7	27	R15	44	R54	47	R95	74
C21	14	J11	28	R16	49	R55	70	R96	38
C22	16	J26	29	R17	44	R56	71	R97	38
C23	8	Q1	30	R18	48	R57	59	R98	85
C24	14	Q2	31	R19	50	R58	72	R99	85
C25	14	Q3	32	R20	38	R59	73	R100	85
C26	14	Q4	32	R21	42	R60	54	R101	39
C28	8	Q5	31	R22	42	R61	65	R102	85
C29	13	Q6	33	R23	51	R62	61	R103	38
C30	13	Q7	34	R24	52	R63	74	R104	86
C32	5	Q8	34	R25	53	R64	75	R105	49
C33	14	Q9	34	R26	51	R65	76	R106	38
C34	14	Q10	34	R27	54	R66	75	R107	54
C35	17	Q11	34	R28	55	R67	74	R108	65
C36	14	Q12	35	R29	51	R68	61	R109	51
C37	14	Q13	35	R30	50	R69	73	R110	81
C38	18	Q14	34	R31	51	R70	77	R111	82
C39	14	Q15	36	R32	51	R71	77	R112	84
C40	14	Q16	37	R33	53	R73	74	R113	68
C41	17	Q17	31	R34	56	R74	78	R114	68

Figure 4. PCB Assembly, Detector (Sheet 2 of 3)

REF. DESIG.	ITEM NO.	REF. DESIG.	ITEM NO.	REF. DESIG.	ITEM NO.	REF. DESIG.	ITEM NO.	REF. DESIG.	ITEM NO.
R115	83	R131	86	TP6	93	TP22	93	U4	95
R116	42	R132	49	TP7	93	TP23	93	U5	95
R117	42	R133	54	TP8	93	TP24	93	U6	96
R118	63	R154	51	TP9	93	TP25	93	U7	97
R119	63	R135	87	TP10	93	TP26	93	U8	98
R120	38	R136	88	TP11	93	TP27	93	U9	99
R121	38	R137	89	TP12	93	TP28	93	U10	100
R122	63	R138	73	TP13	93	TP29	93	U11	96
R123	74	R139	90	TP14	93	TP30	93	U12	96
R124	85	R140	91	TP15	93	TP31	93	U13	101
R125	85	R142	92	TP16	93	TP32	93	U14	101
R126	85	TP1	93	TP17	93	TP33	93	U15	101
R127	85	TP2	93	TP18	93	TP34	93	U16	101
R128	85	TP3	93	TP19	93	U1	94		
R129	85	TP4	93	TP20	93	U2	94		
R130	38	TP5	93	TP21	93	U3	94		

CE1TT004

Figure 4. PCB Assembly, Detector (Sheet 3 of 3)

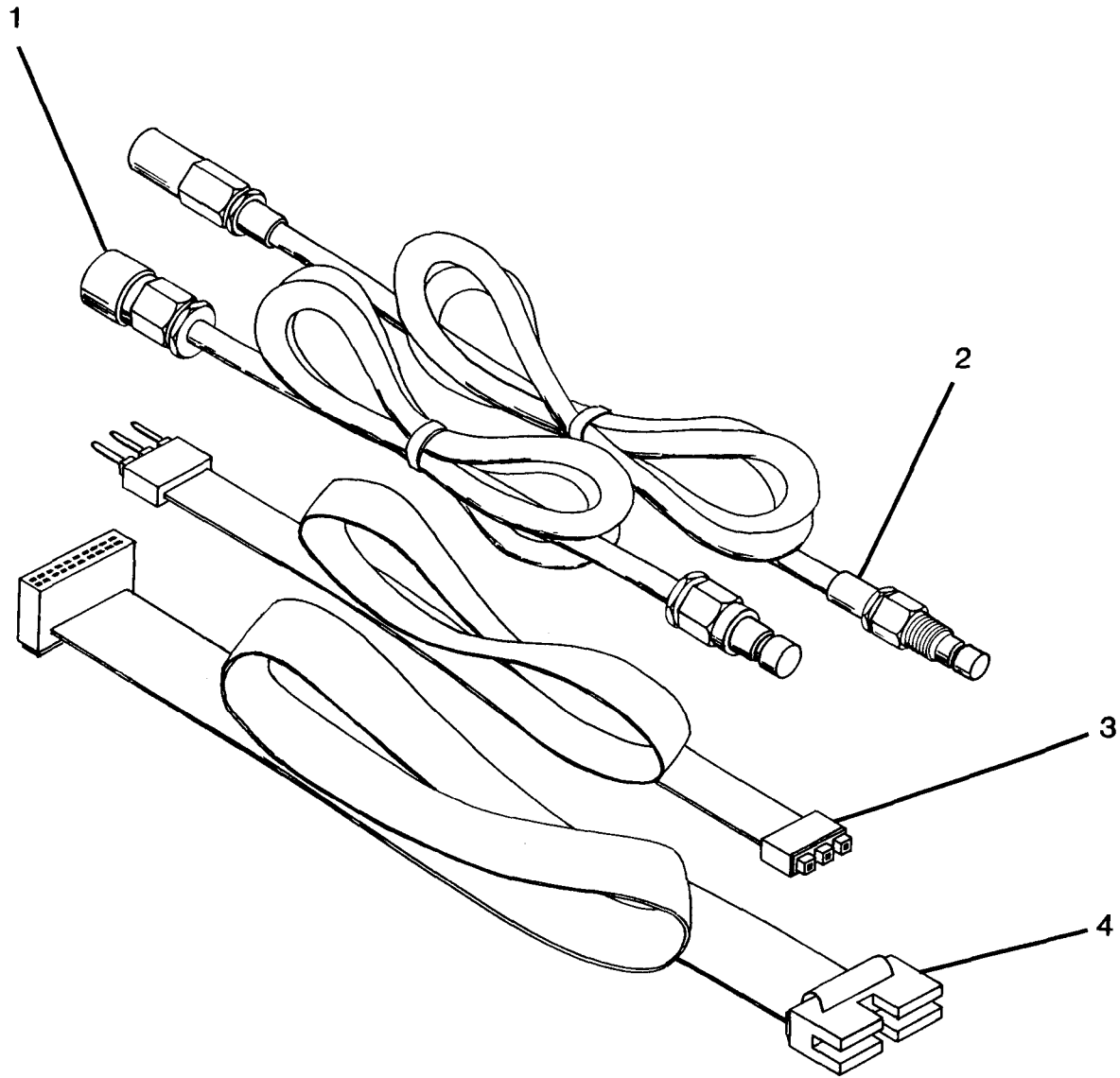


(1) ITEM NO	(2) SMR CODE	(3) FSCM	(4) PART NUMBER	(5) DESCRIPTION AND USABLE ON CODE (UOC)	(6) QTY
GROUP 0102 PCB ASSY DECTECTOR					
FIG. 4					
2	PAHZZ	21793	R-10-2702	CABLE ASSEMBLY,RADI	1
3	PAHZZ	21793	100080	CAPACITOR, FIXED, CER	1
4	PAHZZ	55680	ULB1E470M	CAPACITOR, FIXED, ELE	2
5	PAHZZ	56289	513D107M025884	CAPACITOR, FIXED, ELE	3
6	PAHZZ	56289	C030B102E8R2D	CAPACITOR, FIXED, CER	1
7	PAHZZ	81349	CK60AW102M	CAPACITOR, FIXED, CER	3
8	PAHZZ	21793	100063	CAPACITOR, FIXED, CER	4
9	PAHZZ	61725	PMT2R1.0J100	CAPACITOR, FIXED, MET	1
10	PAHZZ	27914	10216-0028	CAPACITOR, FIXED, CER	1
11	PAHZZ	61725	PMT2R.22J100	CAPACITOR, FIXED, MET	2
12	PAHZZ	K8918	21-1529	CAPACITOR	2
13	PAHZZ	74840	105RSS050M	CAPACITOR, FIXED, ELE	3
14	PAHZZ	04222	3439-100E-104M	CAPACITOR, FIXED, CER	1
15	PAHZZ	60705	561CC0KBA102EE2R 2D	CAPACITOR, FIXED, CER	1
16	PAHZZ	61725	TAPS22K16	CAPACITOR, FIXED, ELE	1
17	PAHZZ	61725	PMT2R0.01J400	CAPACITOR, FIXED, MET	2
18	PAHZZ	15238	PMT2R0.1J100	CAPACITOR, FIXED, MET	2
19	PAHZZ	56289	5GAD25	CAPACITOR, FIXED, CER	1
20	PAHZZ	60705	561CU2JBA102EE27 0K	CAPACITOR, FIXED, CER	1
21	PAHZZ	18796	8141M200C0G0472G	CAPACITOR, FIXED, CER	1
22	PAHZZ	81349	JAN1N5712	SEMICONDUCTOR DEVIC	1
23	PAHZZ	09553	28371-371S	SEMICONDUCTOR DEVIC	1
24	PAHZZ	07263	1N4149	SEMICONDUCTOR DEVIC	1
25	PAHZZ	35784	BZX79C6V8	SEMICONDUCTOR DEVIC	1
26	PAHZZ	14433	ZPD2/7	SEMICONDUCTOR, DEVIC	1
27	PAHZZ	U3441	TR-11.1510.009	CONNECTOR, RECEPTACL	1
28	PAHZZ	53387	3428-2002	CONNECTOR, RECEPTACL	1
29	PAHZZ	52072	CA-S-03-SP100-43 0	CONNECTOR, PLUG, ELEC	1
30	PAHZZ	17856	J105-18	TRANSISTOR	1
31	PAHZZ	17856	J271	TRANSISTOR	1
32	PAHZZ	35784	BC109	TRANSISTOR	1
33	PAHZZ	17856	J108	TRANSISTOR	1
34	PAHZZ	80131	2N4416	TRANSISTOR	1
35	PAHZZ	04713	BFY90	TRANSISTOR	1
36	PAHZZ	17856	J176	TRANSISTOR	1
37	PAHZZ	07263	2N2369	TRANSISTOR	1
38	PAHZZ	81349	RCR07G103JS	RESISTOR, FIXED, COMP	3
39	PAHZZ	81349	RCR07G104JS	RESISTOR, FIXED, COMP	1
40	PAHZZ	81349	RNC55H1471DS	RESISTOR, FIXED, FILM	1
41	PAHZZ	81349	RNC55H5620FS	RESISTOR, FIXED, FILM	1
42	PAHZZ	21793	000102	RESISTOR, FIXED, WIRE	1
43	PAHZZ	81349	RNC55H2032BS	RESISTOR, FIXED, FILM	1
44	PAHZZ	81349	RNC55H1211BS	RESISTOR, FIXED, FILM	1
45	PAHZZ	81349	RCR07G332JS	RESISTOR, FIXED, COMP	1

(1) ITEM NO	(2) SMR CODE	(3) FSCM	(4) PART NUMBER	(5) DESCRIPTION AND USABLE ON CODE (UOC)	(6) QTY
46	PAHZZ	21793	000473	RESISTOR, FIXED, WIRE	1
47	PAHZZ	81349	RCR07G123JS	RESISTOR, FIXED, COMP	1
48	PAHZZ	81349	RCR07G183JS	RESISTOR, FIXED, COMP	1
49	PAHZZ	81349	RCR07G683JS	RESISTOR, FIXED, COMP	1
50	PAHZZ	81349	RNC55H1001FS	RESISTOR, FIXED, FILM	1
51	PAHZZ	81349	RCR07G224JS	RESISTOR, FIXED, COMP	1
52	PAHZZ	81349	RNC55H1322BS	RESISTOR, FIXED, FILM	1
53	PAHZZ	81349	RCR07G393JS	RESISTOR, FIXED, COMP	1
54	PAHZZ	32997	3386F-1-503	RESISTOR, VARIABLE, N	1
55	PAHZZ	81349	RNC55H1322BS	RESISTOR, FIXED, FILM	1
56	PAHZZ	81349	RNC55H1213FS	RESISTOR, FIXED, FILM	1
57	PAHZZ	81349	RCR07G154JS	RESISTOR, FIXED, COMP	1
58	PAHZZ	81349	RNC55H1823BS	RESISTOR, FIXED, FILM	1
59	PAHZZ	81349	RCR07G221JS	RESISTOR, FIXED, COMP	1
60	PAHZZ	21793	000474	RESISTOR	1
61	PAHZZ	81349	RCR07G273JS	RESISTOR, FIXED, COMP	1
62	PAHZZ	81349	RCR07G334JS	RESISTOR, FIXED, COMP	1
63	PAHZZ	81349	RCR07G472JS	RESISTOR, FIXED, COMP	3
64	PAHZZ	32997	3386F-1-102	RESISTOR, VARIABLE, N	2
65	PAHZZ	81349	RCR07G333JS	RESISTOR, FIXED, COMP	1
66	PAHZZ	81349	RNC55H3321DS	RESISTOR, FIXED, FILM	1
67	PAHZZ	81349	RNC55H1431DS	RESISTOR, FIXED, FILM	1
68	PAHZZ	21793	000101	RESISTOR, FIXED, WIRE	2
69	PAHZZ	81349	RNC55H2261BS	RESISTOR, FIXED, FILM	1
70	PAHZZ	81349	RCR07G105JS	RESISTOR, FIXED, COMP	1
71	PAHZZ	73138	72PMR100K	RESISTOR, VARIABLE, N	1
72	PAHZZ	81349	RCR07G121JS	RESISTOR, FIXED, COMP	1
73	PAHZZ	21793	000182	RESISTOR, FIXED	1
74	PAHZZ	81349	RCR07G153JS	RESISTOR, FIXED, COMP	1
75	PAHZZ	81349	RNC55H1691BS	RESISTOR, FIXED, FILM	1
76	PAHZZ	32997	3386F-1-500	RESISTOR, VARIABLE, N	1
77	PAHZZ	81349	RNC55H2432BS	RESISTOR, FIXED, FILM	1
78	PAHZZ	81349	RNC55H1003DS	RESISTOR, FIXED, FILM	1
79	PAHZZ	81349	RNC55J2701BS	RESISTOR, FIXED, FILM	1
80	PAHZZ	81349	RCR07G125JS	RESISTOR, FIXED, COMP	1
81	PAHZZ	81349	RNC55H1301BS	RESISTOR, FIXED, FILM	1
82	PAHZZ	32997	3386F-1-201	RESISTOR, VARIABLE, N	1
83	PAHZZ	81349	RNC55J8871BS	RESISTOR, FIXED, FILM	1
84	PAHZZ	81349	RCR07G394JS	RESISTOR, FIXED, COMP	1
85	PAHZZ	81349	RNC55H1002DS	RESISTOR, FIXED, FILM	1
86	PAHZZ	81349	RCR07G561JS	RESISTOR, FIXED, COMP	1
87	PAHZZ	81349	RNC55J2700BS	RESISTOR, FIXED, FILM	1
88	PAHZZ	81349	RCR07G272JS	RESISTOR, FIXED, COMP	1
89	PAHZZ	81349	RLR20C2200GS	RESISTOR, FIXED, FILM	1
90	PAHZZ	81349	RCR07G223JS	RESISTOR, FIXED, COMP	1
91	PAHZZ	81349	RLR20C3920FS	RESISTOR, FIXED, FILM	1
92	PAHZZ	01121	001794	RESISTOR, FIXED, COMP	1
93	PAHZZ	30010	20-2136-J	CONNECTOR ASSEMBLY,	1
94	PAHZZ	02735	CA3146E	SEMICONDUCTOR DEVIC	1
95	PAHZZ	96214	804940-1	MICROCIRCUIT, LINEAR	1
96	PAHZZ	52648	SP9680DP	MICROCIRCUIT, LINEAR	1
97	PAHZZ	04713	MC7905.2CTD	MICROCIRCUIT, LINEAR	1

(1) ITEM NO	(2) SMR CODE	(3) FSCM	(4) PART NUMBER	(5) DESCRIPTION AND USABLE ON CODE (UOC)	(6) QTY
98	PAHZZ	27014	LM340AT-5.0	MICROCIRCUIT,LINEAR	1
99	PAHZZ	96214	536958-1	MICROCIRCUIT,LINEAR	1
100	PAHZZ	27014	LF356J	MICROCIRCUIT,LINEAR	1
101	PAHZZ	31361	1688-926	MICROCIRCUIT,LINEAR	1

END OF FIGURE



CE1TT005

Figure 5. Extender Cable Kit (Sheet 1 of 1)

(1) ITEM NO	(2) SMR CODE	(3) FSCM	(4) PART NUMBER	(5) DESCRIPTION AND USABLE ON CODE (UOC)	(6) QTY
-------------------	--------------------	-------------	-----------------------	---	------------

GROUP 99 CABLE KIT EXTENDER

FIG. 5

BOI: 1 EA AUTH PER EQUIPMENT

1	XBHZZ	21793	601834	CABLE ASSEMBLY,RADI	1
2	XBHZZ	21793	601835	CABLE ASSEMBLY,RADI	1
3	XBHZZ	55322	CSP/25-3-D-24-S5	CABLE ASSEMBLY,SPEC	1
4	XBHZZ	0AX74	ASI-3605	CABLE ASSEMBLY	2

END OF FIGURE



CROSS-REFERENCE INDEXES

NATIONAL STOCK NUMBER INDEX

STOCK NUMBER	FIG.	ITEM	STOCK NUMBER	FIG.	ITEM
5961-00-048-7106	3	34	5905-00-186-9548	3	57
	4	22	5905-00-189-1798	4	44
5961-00-068-9152	4	37	5905-00-189-1814	4	81
5910-00-098-8532	4	21	6625-00-194-3073	1	3
5905-00-104-8358	3	50	5905-00-204-7744	4	85
5905-00-104-8364	4	80	5905-00-252-1671	3	61
5905-00-105-7764	3	55	5905-00-261-7313	3	56
5905-00-105-7765	4	51		4	64
5905-00-105-7768	4	86	5905-00-273-9776	4	75
5905-00-106-1278	4	47	5905-00-288-7704	4	77
5905-00-106-1356	3	65	5962-00-302-3963	3	84
5905-00-106-1357	3	48	5905-00-305-5301	4	79
5905-00-106-3666	3	47	5910-00-353-0874	3	25
	4	38	5962-00-369-9839	3	100
5905-00-107-0656	3	70	5905-00-402-6917	4	41
5961-00-107-2678	4	34	5905-00-421-0842	4	68
5905-00-110-0388	3	51	5905-00-421-0843	4	42
	4	39	5905-00-421-0847	3	52
5975-00-111-3208	3	7		4	46
5905-00-111-4727	4	88	5905-00-428-2291	4	82
5961-00-112-2578	4	25	5905-00-429-9721	4	40
5905-00-114-0711	3	67	5961-00-450-3022	3	37
	4	63		4	24
5905-00-114-5339	3	53	5905-00-485-4545	4	62
	4	57	5920-00-504-8634	1	4
5905-00-115-3560	4	48	5310-00-531-1325	1	11
5905-00-115-3562	4	84		2	20
5905-00-115-8055	4	53	5905-00-547-8845	4	78
5905-00-116-8554	3	49	5905-00-549-1627	4	83
	4	70	5905-00-570-5042	3	73
5905-00-116-8555	4	74	6145-00-577-3420	2	11
5905-00-116-8556	3	54	5905-00-758-5009	4	56
	4	90	5970-00-782-7142	3	4
5905-00-118-4559	4	65	5910-00-788-0328	3	24
5905-00-119-3504	4	61		4	8
5905-00-119-3505	4	49	5910-00-838-9421	4	7
5905-00-119-8768	3	69	5910-00-840-7312	4	10
5905-00-119-8812	4	72	5910-00-864-8389	4	19
5905-00-126-6683	3	46	6145-00-939-4955	2	18
	4	45	5930-00-947-8318	2	47
5905-00-131-1255	3	62	5310-00-956-4716	2	46
5920-00-131-9819	3	38	5961-00-957-6865	3	32
5905-00-135-3973	4	59	5910-00-989-3595	4	15
5905-00-138-3376	4	50	5920-01-011-2339	1	6
5905-00-139-2104	4	58	5905-01-012-3034	4	71
5905-00-141-0743	3	64	5935-01-014-2261	4	28
5905-00-141-1183	3	63	5961-01-019-4961	3	33
5970-00-166-5697	3	14	5905-01-024-9111	4	54
5962-00-172-8261	4	99	5962-01-026-6055	3	96
5325-00-174-5317	2	44	5961-01-027-5744	4	30

CROSS-REFERENCE INDEXES

NATIONAL STOCK NUMBER INDEX

STOCK NUMBER	FIG.	ITEM	STOCK NUMBER	FIG.	ITEM
5962-01-027-6863	3	102	5910-01-145-3147	4	18
5962-01-031-7030	3	101	5305-01-149-9638	2	28
5905-01-043-1326	4	52	5305-01-152-2587	1	10
	4	55	5905-01-155-7657	4	76
5961-01-048-7741	2	45	5962-01-158-9149	3	103
5962-01-050-0918	3	94	5961-01-168-4103	3	36
5905-01-052-0978	3	59	5910-01-181-1571	3	29
5962-01-058-1539	3	99	5905-01-185-5596	4	89
5310-01-064-3613	2	22	5962-01-188-2933	3	91
5905-01-066-3753	3	72	5905-01-198-1444	4	91
5905-01-066-6254	3	75	5910-01-202-6163	4	16
5962-01-067-9804	3	95	5935-01-204-1057	3	39
5962-01-068-1039	3	85	5905-01-207-6436	3	71
5910-01-069-0189	3	27	5962-01-207-7131	3	86
5962-01-081-3918	4	100	5340-01-210-7385	2	12
5905-01-086-2746	4	43	5975-01-223-8533	3	8
5935-01-086-7423	3	113	5310-01-250-9219	1	12
5962-01-086-7634	3	93	5905-01-252-0332	4	87
5962-01-088-3862	3	79	5910-01-262-1707	4	11
5962-01-090-1936	4	95	5962-01-262-3916	3	109
5999-01-090-6565	3	3	5961-01-274-7544	4	36
5961-01-093-8344	4	35	5930-01-276-8937	3	77
5962-01-093-8823	3	97	5935-01-278-6878	3	78
5962-01-097-0012	3	98		4	93
5905-01-097-3213	3	76	5999-01-284-0032	2	35A
5961-01-100-5002	4	94	5999-01-284-0035	2	53
5962-01-106-4876	3	83	5999-01-284-0036	2	50
5961-01-108-0168	4	33	5999-01-284-0037	2	27
5910-01-109-8441	2	6	5910-01-288-4122	3	23
	2	10		4	4
5962-01-110-9930	2	24	6150-01-288-9653	1	1
	4	98	5950-01-290-2391	2	15
5310-01-112-1195	2	26	5305-01-293-6109	3	15
	2	35	5305-01-293-6112	2	8
	3	11	5910-01-299-4462	4	9
5962-01-113-6179	3	81	5962-01-303-3097	3	87
5905-01-116-8829	4	73	5962-01-303-3098	3	88
5935-01-119-1581	3	2	5962-01-303-3099	3	89
5962-01-121-1969	4	97	5962-01-303-3100	3	90
5995-01-124-2735	1	2	5905-01-306-1156	3	66
5905-01-125-5612	4	66	5999-01-306-2289	3	5
5905-01-126-7984	4	67	5999-01-306-2290	3	6
5905-01-126-8111	3	58	5961-01-306-2453	4	23
5905-01-127-7409	4	60	5970-01-306-4268	2	23
5910-01-129-0054	3	22	6150-01-306-4712	3	41
	4	14	6150-01-306-4713	4	2
5935-01-129-1431	3	40	5905-01-306-5238	3	60
5962-01-135-0963	4	101	5962-01-306-5554	3	106
5910-01-136-5277	4	3	5310-01-306-6038	2	7
5905-01-139-0363	4	69		2	25



CROSS-REFERENCE INDEXES

NATIONAL STOCK NUMBER INDEX

STOCK NUMBER	FIG.	ITEM	STOCK NUMBER	FIG.	ITEM
5310-01-306-6038	3	12			
5310-01-306-6039	1	18			
	2	21			
5310-01-306-6040	2	30			
5310-01-306-6041	2	13			
5935-01-306-6659	3	42			
5910-01-306-8742	3	30			
	4	20			
5910-01-306-8745	3	19			
5935-01-306-8771	2	29			
	2	43			
5935-01-306-8795	3	80			
5910-01-306-9030	3	28			
5910-01-306-9035	3	18			
5910-01-306-9036	3	20			
5305-01-306-9918	3	13			
5310-01-307-3558	2	31			
5305-01-307-4390	3	16			
5305-01-307-4391	2	3			
5305-01-307-4392	1	17			
5305-01-307-5198	2	19			
5305-01-307-5199	2	34			
5365-01-307-5913	2	49			
5940-01-307-6077	3	10			

CROSS-REFERENCE INDEXES

FSCM	PART NUMBER	PART NUMBER INDEX		FIG.	ITEM
		STOCK NUMBER			
0AX74	ASI-3605			5	4
19738	AVLUG1107/0208	5940-01-307-6077		3	10
F6507	A141-410-UK-001	5935-01-306-8771		2	43
35784	BC109			3	44
				4	32
04713	BFY90	5961-01-093-8344		4	35
35784	BZX79C10			3	35
35784	BZX79C6V8	5961-00-112-2578		4	25
08226	B18241D020	5310-01-307-3558		2	31
08226	B1867DA030060			2	40
08226	B1867DA030120			2	36
52072	CA-S-03-SP100-43 0			4	29
18714	CA3078AE	5962-01-262-3916		3	109
02735	CA3146E	5961-01-100-5002		4	94
81349	CK60AW102M	5910-00-838-9421		4	7
81349	CMR04E680F0DR	5910-01-069-0189		3	27
91637	CSC05A-01-223J	5905-01-306-5238		3	60
91637	CSC09A-01-332J	5905-01-306-1156		3	66
55322	CSP/25-3-D-24-S5			5	3
56289	C030B102E8R2D			4	6
27014	DM54L42AJ/883B	5962-00-302-3963		3	84
81349	F02B250V1-4A	5920-00-504-8634		1	4
U0928	F27/PC			3	112
14240	HA-55-820-.1%-50 PPM			3	74
K4492	HTA-3050-16N			2	41
K4492	HTL-3050-05			2	42
06776	ICL-246-S7T			3	114
56289	IC20Z5U473M050B			3	21
81349	JAN1N3611	5961-00-957-6865		3	32
81349	JAN1N5712	5961-00-048-7106		3	34
				4	22
17856	J105-18	5961-01-027-5744		4	30
17856	J108	5961-01-108-0168		4	33
17856	J176	5961-01-274-7544		4	36
17856	J271			4	31
14936	KBPC602	5961-01-048-7741		2	45
27014	LF356J	5962-01-081-3918		4	100
27014	LM340AT-5.0	5962-01-110-9930		2	24
				4	98
31586	LS-120/SOLDER-TA GS			3	17
04713	MC6802P	5962-01-097-0012		3	98
04713	MC6821P	5962-01-106-4876		3	83
04713	MC7905.2CTD	5962-01-121-1969		4	97
K1365	MKC2.047UF+10%63 V			3	26
27014	MM74HC4075			3	107
31918	MSAM			2	5
96906	MS3367-5-9	5975-00-111-3208		3	7

CROSS-REFERENCE INDEXES

FSCM	PART NUMBER	PART NUMBER INDEX		FIG.	ITEM
		STOCK NUMBER			
96906	MS35489-4	5325-00-174-5317		2	44
96906	MS75029-23	5930-00-947-8318		2	47
81349	M22759/11-20-0	6145-00-939-4955		2	18
81349	M38510/00803BCB	5962-00-369-9839		3	100
81349	M38510/05802BCB	5962-01-113-6179		3	81
81349	M38510/11201BCB	5962-01-088-3862		3	79
81349	M38510/24502BVB	5962-01-188-2933		3	91
81349	M38510/30003BCB	5962-01-027-6863		3	102
81349	M38510/30009BCB	5962-01-026-6055		3	96
81349	M38510/30102BCB	5962-01-058-1539		3	99
81349	M38510/30701BEB	5962-01-050-0918		3	94
81349	M38510/30702BEB	5962-01-067-9804		3	95
81349	M38510/3100EBCB	5962-01-158-9149		3	103
81349	M38510/31401BEB	5962-01-068-1039		3	85
81349	M38510/32401BRB	5962-01-093-8823		3	97
81349	M38510/32403BRB	5962-01-086-7634		3	93
81349	M83734/3-015	5935-01-086-7423		3	113
06915	NGS-2			2	14
08226	PK75XZ6-5	5305-01-306-9918		3	13
06383	PLT2M	5975-01-223-8533		3	8
61725	PMT2R.22J100	5910-01-262-1707		4	11
61725	PMT2R.01J400			4	17
15238	PMT2R0.1J100	5910-01-145-3147		4	18
61725	PMT2R1.0J100	5910-01-299-4462		4	9
08226	PTH-8-18X3/8-SS- ABLK			1	30
21793	R-10-2702	6150-01-306-4713		4	2
21793	R-11-1463			2	54
21793	R-11-1492-001			2	51
21793	R-11-1543			2	32
21793	R-11-1544			2	52
21793	R-11-1545			2	17
21793	R-13-1859			2	16
21793	R-13-1860			2	37
21793	R-13-1860			2	37
21793	R-13-1861			2	38
21793	R-13-1887			1	16
21793	R-13-1900			2	33
21793	R-13-1927			1	23
21793	R-13-1931			2	39
21793	R-13-1941			3	111
21793	R-13-1948			1	24
21793	R-14-1328			2	48
21793	R-14-1551	5365-01-307-5913		2	49
21793	R-17-1026	5935-01-306-8795		3	80
21793	R-17-4097	5950-01-290-2391		2	15
21793	R-19-1017-001	5999-01-284-0036		2	50
21793	R-19-1018-001	5999-01-284-0037		2	27
21793	R-19-1021	5999-01-284-0032		2	35A
21793	R-19-1023-001	5999-01-284-0035		2	53
21793	R-22-1662			3	31
21793	R-22-8563	5962-01-303-3100		3	90

CROSS-REFERENCE INDEXES

FSCM	PART NUMBER	PART NUMBER INDEX		FIG.	ITEM
		STOCK NUMBER			
21793	R-22-8564	5962-01-303-3099		3	89
21793	R-22-8565	5962-01-303-3098		3	88
21793	R-22-8566	5962-01-303-3097		3	87
21793	R-23-3198	5935-01-306-8771		2	29
21793	R-23-9074			1	19
21793	R-24-6052			1	25
81349	RCR07GF335JS			3	68
81349	RCR07G100JS	5905-00-107-0656		3	70
81349	RCR07G101JS	5905-00-141-1183		3	63
81349	RCR07G103JS	5905-00-106-3666		3	47
				4	38
81349	RCR07G104JS	5905-00-110-0388		3	51
				4	39
81349	RCR04G105JS	5905-00-116-8554		3	49
				4	70
81349	RCR07G121JS	5905-00-119-8812		4	72
81349	RCR07G122JS	5905-00-131-1255		3	62
81349	RCR07G123JS	5905-00-106-1278		4	47
81349	RCR07G125JS	5905-00-104-8364		4	80
81349	RCR07G152JS	5905-00-106-1356		3	65
81349	RCR07G153JS	5905-00-116-8555		4	74
81349	RCR07G154JS	5905-00-114-5339		3	53
				4	57
81349	RCR07G183JS	5905-00-115-3560		4	48
81349	RCR07G221JS	5905-00-135-3973		4	59
81349	RCR07G222JS	5905-00-105-7764		3	55
81349	RCR07G223JS	5905-00-116-8556		3	54
				4	90
81349	RCR07G224JS	5905-00-105-7765		4	51
81349	RCR07G225JS	5905-00-252-1671		3	61
81349	RCR07G272JS	5905-00-111-4727		4	88
81349	RCR07G273JS	5905-00-119-3504		4	61
81349	RCR07G332JS	5905-00-126-6683		3	46
				4	45
81349	RCR07G333JS	5905-00-118-4559		4	65
81349	RCR07G334JS	5905-00-485-4545		4	62
81349	RCR07G392JS	5905-00-141-0743		3	64
81349	RCR07G393JS	5905-00-115-8055		4	53
81349	RCR07G394JS	5905-00-115-3562		4	84
81349	RCR07G472JS	5905-00-114-0711		3	67
				4	63
81349	RCR07G561JS	5905-00-105-7768		4	86
81349	RCR07G563JS	5905-00-106-1357		3	48
81349	RCR07G683JS	5905-00-119-3505		4	49
81349	RCR07G821JS	5905-00-119-8768		3	69
81349	RCR07G822JS	5905-00-104-8358		3	50
81349	RJR24FW102R	5905-01-207-6436		3	71
81349	RLR20C2200GS	5905-01-185-5596		4	89
81349	RLR20C3920FS	5905-01-198-1444		4	91
81349	RNC55H1001FS	5905-00-138-3376		4	50
81349	RNC55H1002DS	5905-00-204-7744		4	85

CROSS-REFERENCE INDEXES

FSCM	PART NUMBER	PART NUMBER INDEX		FIG.	ITEM
		STOCK NUMBER			
81349	RNC55H1003DS	5905-00-547-8845		4	78
81349	RNC55H1004BS	5905-01-052-0978		3	59
81349	RNC55H1133DS	5905-01-126-8111		3	58
81349	RNC55H1211BS	5905-00-189-1798		4	44
81349	RNC55H1213FS	5905-00-758-5009		4	56
81349	RNC55H1301BS	5905-00-189-1814		4	81
81349	RNC55H1322BS	5905-01-043-1326		4	52
				4	55
81349	RNC55H1431DS	5905-01-126-7984		4	67
81349	RNC55H1471DS	5905-00-429-9721		4	40
81349	RNC55H1691BS	5905-00-273-9776		4	75
81349	RNC55H1823BS	5905-00-139-2104		4	58
81349	RNC55H2032BS	5905-01-086-2746		4	43
81349	RNC55H2261BS	5905-01-139-0363		4	69
81349	RNC55H2432BS	5905-00-288-7704		4	77
81349	RNC55H3321DS	5905-01-125-5612		4	66
81349	RNC55H3901BS	5905-01-066-3753		3	72
81349	RNC55H4301BS	5905-01-066-6254		3	75
81349	RNC55H5620FS	5905-00-402-6917		4	41
81349	RNC55H5901BS	5905-00-186-9548		3	57
81349	RNC55J2201BS	5905-00-570-5042		3	73
81349	RNC55J2700BS	5905-01-252-0332		4	87
81349	RNC55J2701BS	5905-00-305-5301		4	79
81349	RNC55J8871BS	5905-00-549-1627		4	83
01295	SN74HC00N	5962-01-207-7131		3	86
52648	SP9680DP			4	96
61725	TAPS22K16	5910-01-202-6163		4	16
06915	TCBS-12			3	9
U3441	TR-11.1510.009			4	27
15818	TSC8750CJ			3	82
K1660	TV21	5999-01-306-2290		3	6
K1660	TV5	5999-01-306-2289		3	5
07263	UA78MGUIC			3	105
07263	UA79MGUIC			3	104
55680	ULB1E470M	5910-01-288-4122		3	23
				4	4
55972	W06SS	5310-00-531-1325		1	11
				2	20
22119	ZN458B	5962-01-306-5554		3	106
14433	ZPD2/7			4	26
22119	ZTX450			3	45
21793	000101	5905-00-421-0842		4	68
21793	000102	5905-00-421-0843		4	42
21793	000182	5905-01-116-8829		4	73
21793	000473	5905-00-421-0847		3	52
				4	46
21793	000474	5905-01-127-7409		4	60
01121	001794			4	92
28480	0160-4439	5910-01-109-8441		2	6
				2	10
80131	1N4149	5961-00-450-3022		3	37

CROSS-REFERENCE INDEXES

FSCM	PART NUMBER	PART NUMBER INDEX		FIG.	ITEM
		STOCK NUMBER			
07263	1N4149	5961-00-450-3022		4	24
80131	1N5730B	5961-01-019-4961		3	33
K8550	10-10-0537-10			3	43
21793	10-2871	6150-01-306-4712		3	41
56289	10TST33	5910-01-181-1571		3	29
21793	100063	5910-00-788-0328		3	24
				4	8
21793	100080	5910-01-136-5277		4	3
27914	10216-0028	5910-00-840-7312		4	10
08505	1026-36	5995-01-124-2735		1	2
74840	105RSS050M			4	13
18876	10581431-23	5310-00-956-4716		2	46
21793	110141	5910-00-353-0874		3	25
31361	1688-926	5962-01-135-0963		4	101
13764	17W02811	5310-01-250-9219		1	12
07263	2N2369	5961-00-068-9152		4	37
80131	2N4416	5961-00-107-2678		4	34
30010	20-2136-J	5935-01-278-6878		4	93
30010	20-2136J	5935-01-278-6878		3	78
K8918	21-1529			4	12
21793	210017	5961-01-168-4103		3	36
A0199	2128-08-500	5310-01-112-1195		2	26
				2	35
				3	11
K0004	2222-050-55223	5910-01-306-9035		3	18
30010	229-90062G	5935-01-306-6659		3	42
K8918	23-9080	5970-01-306-4268		2	23
K8918	24-2800			1	15
K8918	24-2801	5310-01-306-6038		2	7
				2	25
				3	12
K8918	24-2802	5310-01-306-6039		1	18
				2	21
K8918	24-2804	5310-01-306-6040		2	30
K8918	24-2805	5310-01-306-6041		2	13
13103	250	5970-00-166-5697		3	14
05276	2631	6625-00-194-3073		1	3
09553	28371-371S	5961-01-306-2453		4	23
92194	299	6145-00-577-3420		2	11
28480	3101-2371	5930-01-276-8937		3	77
75915	31301-6	5920-00-131-9819		3	38
97525	322064-05	5305-01-149-9638		2	28
32997	3386F-1-102	5905-00-261-7313		3	56
				4	64
32997	3386F-1-201	5905-00-428-2291		4	82
32997	3386F-1-500	5905-01-155-7657		4	76
32997	3386F-1-503	5905-01-024-9111		4	54
53387	3428-2002	5935-01-014-2261		4	28
75037	3428-2302	5935-01-129-1431		3	40
76381	3431-6302	5935-01-204-1057		3	39
04222	3439-100E-104M	5910-01-129-0054		3	22

CROSS-REFERENCE INDEXES

FSCM	PART NUMBER	PART NUMBER INDEX		FIG.	ITEM
		STOCK NUMBER			
04222	3439-100E-104M	5910-01-129-0054		4	14
53387	3518	5935-01-119-1581		3	2
21793	404614			1	5
32997	4310R-101-103	5905-01-097-3213		3	76
71279	450-2213-01-03-1 0			3	110
21793	454319			1	9
21793	454354			1	21
21793	454355			1	27
21793	454385			1	8
21793	454389			2	1
21793	454393			1	22
21793	454539			1	13
21793	454621			1	29
21793	455399			1	20
56289	5GAD25	5910-00-864-8389		4	19
21793	500202			2	9
56289	513D107M025884			4	5
96214	536958-1	5962-00-172-8261		4	99
60705	561CC0KBA102EE2R 2D	5910-00-989-3595		4	15
60705	561CR3LBA102EH27 1K	5910-01-306-9030		3	28
60705	561CU2JBA102EE27 0K	5910-01-306-8742		3	30
				4	20
67268	59628868501PA			3	108
21793	600620	6150-01-288-9653		1	1
21793	600961	5340-01-210-7385		2	12
21793	601834			5	1
21793	601835			5	2
21793	610909	5305-01-152-2587		1	10
21793	615014			1	14
21793	616317	5305-01-307-5199		2	34
21793	616320	5305-01-307-4390		3	16
21793	616329	5305-01-307-4391		2	3
21793	616342	5305-01-307-4392		1	17
21793	616343	5305-01-307-5198		2	19
21793	617044	5310-01-064-3613		2	22
73138	72PMR100K	5905-01-012-3034		4	71
05869	725000-813	5962-01-031-7030		3	101
01295	74ALS245A-1N			3	92
22526	76151-002	5999-01-090-6565		3	3
57730	7985/A2-M3X6	5305-01-293-6112		2	8
57730	7985/A2-M3X8	5305-01-293-6109		3	15
56289	80D332P025HB5	5910-01-306-9036		3	20
56289	80D332P050KB5	5910-01-306-8745		3	19
96214	804940-1	5962-01-090-1936		4	95
18796	8141M200C0G0472G	5910-00-098-8532		4	21
21793	920007	5970-00-782-7142		3	4
21793	920204	5920-01-011-2339		1	6

CROSS-REFERENCE INDEXES

FSCM	PART NUMBER	PART NUMBER INDEX		FIG.	ITEM
		STOCK NUMBER			
21793	920504			1	28
21793	920952			1	7
21793	920958			1	26
21793	920962			2	2
21793	921021			2	4



SECTION IV

CROSS-REFERENCE INDEXES

FIGURE AND ITEM NUMBER INDEX				
FIG.	ITEM	STOCK NUMBER	FSCM	PART NUMBER
1	1	6150-01-288-9653	21793	600620
1	2	5995-01-124-2735	08505	1026-36
1	3	6625-00-194-3073	05276	2631
1	4	5920-00-504-8634	81349	F02B250V1-4A
1	5		21793	404614
1	6	5920-01-011-2339	21793	920204
1	7		21793	920952
1	8		21793	454385
1	9		21793	454319
1	10	5305-01-152-2587	21793	610909
1	11	5310-00-531-1325	55972	W06SS
1	12	5310-01-250-9219	13764	17W02811
1	13		21793	454539
1	14		21793	615014
1	15		K8918	24-2800
1	16		21793	R-13-1887
1	17	5305-01-307-4392	21793	616342
1	18	5310-01-306-6039	K8918	24-2802
1	19		21793	R-23-9074
1	20		21793	455399
1	21		21793	454354
1	22		21793	454393
1	23		21793	R-13-1927
1	24		21793	R-13-1948
1	25		21793	R-24-6052
1	26		21793	920958
1	27		21793	454355
1	28		21793	920504
1	29		21793	454621
1	30		08226	PTH-8-18X3/8-SS- ABLK
2	1		21793	454389
2	2		21793	920962
2	3	5305-01-307-4391	21793	616329
2	4		21793	921021
2	5		31918	MSAM
2	6	5910-01-109-8441	28480	0160-4439
2	7	5310-01-306-6038	K8918	24-2801
2	8	5305-01-293-6112	57730	7985/A2-M3X6
2	9		21793	500202
2	10	5910-01-109-8441	28480	0160-4439
2	11	6145-00-577-3420	92194	299
2	12	5340-01-210-7385	21793	600961
2	13	5310-01-306-6041	K8918	24-2805
2	14		06915	NGS-2
2	15	5950-01-290-2391	21793	R-17-4097
2	16		21793	R-13-1859
2	17		21793	R-11-1545
2	18	6145-00-939-4955	81349	M22759/11-20-0
2	19	5305-01-307-5198	21793	616343
2	20	5310-00-531-1325	55972	W06SS

SECTION IV

CROSS-REFERENCE INDEXES

FIGURE AND ITEM NUMBER INDEX				
FIG.	ITEM	STOCK NUMBER	FSCM	PART NUMBER
2	21	5310-01-306-6039	K8918	24-2802
2	22	5310-01-064-3613	21793	617044
2	23	5970-01-306-4268	K8918	23-9080
2	24	5962-01-110-9930	27014	LM340AT-5.0
2	25	5310-01-306-6038	K8918	24-2801
2	26	5310-01-112-1195	A0199	2128-08-500
2	27	5999-01-284-0037	21793	R-19-1018-001
2	28	5305-01-149-9638	97525	322064-05
2	29	5935-01-306-8771	21793	R-23-3198
2	30	5310-01-306-6040	K8918	24-2804
2	31	5310-01-307-3558	08226	B18241D020
2	32		21793	R-11-1543
2	33		21793	R-13-1900
2	34	5305-01-307-5199	21793	616317
2	35	5310-01-112-1195	A0199	2128-08-500
2	35A	5999-01-284-0032	21793	R-19-1021
2	36		08226	B1867DA030120
2	37		21793	R-13-1860
2	38		21793	R-13-1861
2	39		21793	R-13-1931
2	40		08226	B1867DA030060
2	41		K4492	HTA-3050-16N
2	42		K4492	HTL-3050-05
2	43	5935-01-306-8771	F6507	A141-410-UK-001
2	44	5325-00-174-5317	96906	MS35489-4
2	45	5961-01-048-7741	14936	KBPC602
2	46	5310-00-956-4716	18876	10581431-23
2	47	5930-00-947-8318	96906	MS75029-23
2	48		21793	R-14-1328
2	49	5365-01-307-5913	21793	R-14-1551
2	50	5999-01-284-0036	21793	R-19-1017-001
2	51		21793	R-11-1492-001
2	52		21793	R-11-1544
2	53	5999-01-284-0035	21793	R-19-1023-001
2	54		21793	R-11-1463
3	2	5935-01-119-1581	53387	3518
3	3	5999-01-090-6565	22526	76151-002
3	4	5970-00-782-7142	21793	920007
3	5	5999-01-306-2289	K1660	TV5
3	6	5999-01-306-2290	K1660	TV21
3	7	5975-00-111-3208	96906	MS3367-5-9
3	8	5975-01-223-8533	06383	PLT2M
3	9		06915	TCBS-12
3	10	5940-01-307-6077	19738	AVLUG1107/0208
3	11	5310-01-112-1195	A0199	2128-08-500
3	12	5310-01-306-6038	K8918	24-2801
3	13	5305-01-306-9918	08226	PK75XZ6-5
3	14	5970-00-166-5697	13103	250
3	15	5305-01-293-6109	57730	7985/A2-M3X8
3	16	5305-01-307-4390	21793	616320
3	17		31586	LS-120/SOLDER-TA GS

SECTION IV

CROSS-REFERENCE INDEXES

FIGURE AND ITEM NUMBER INDEX				
FIG.	ITEM	STOCK NUMBER	FSCM	PART NUMBER
3	18	5910-01-306-9035	K0004	2222-050-55223
3	19	5910-01-306-8745	56289	80D332P050KB5
3	20	5910-01-306-9036	56289	80D332P025HB5
3	21		56289	IC20Z5U473M050B
3	22	5910-01-129-0054	04222	3439-100E-104M
3	23	5910-01-288-4122	55680	ULB1E470M
3	24	5910-00-788-0328	21793	100063
3	25	5910-00-353-0874	21793	110141
3	26		K1365	MKC2.047UF+10%63 V
3	27	5910-01-069-0189	81349	CMR04E680F0DR
3	28	5910-01-306-9030	60705	561CR3LBA102EH27 1K
3	29	5910-01-181-1571	56289	10TST33
3	30	5910-01-306-8742	60705	561CU2JBA102EE27 OK
3	31		21793	R-22-1662
3	32	5961-00-957-6865	81349	JAN1N3611
3	33	5961-01-019-4961	80131	1N5730B
3	34	5961-00-048-7106	81349	JAN1N5712
3	35		35784	BZX79C10
3	36	5961-01-168-4103	21793	210017
3	37	5961-00-450-3022	80131	1N4149
3	38	5920-00-131-9819	75915	31301-6
3	39	5935-01-204-1057	76381	3431-6302
3	40	5935-01-129-1431	75037	3428-2302
3	41	6150-01-306-4712	21793	10-2871
3	42	5935-01-306-6659	30010	229-90062G
3	43		K8550	10-10-0537-10
3	44		35784	BC109
3	45		22119	ZTX450
3	46	5905-00-126-6683	81349	RCR07G332JS
3	47	5905-00-106-3666	81349	RCR07G103JS
3	48	5905-00-106-1357	81349	RCR07G563JS
3	49	5905-00-116-8554	81349	RCR07G105JS
3	50	5905-00-104-8358	81349	RCR07G822JS
3	51	5905-00-110-0388	81349	RCR07G104JS
3	52	5905-00-421-0847	21793	000473
3	53	5905-00-114-5339	81349	RCR07G154JS
3	54	5905-00-116-8556	81349	RCR07G223JS
3	55	5905-00-105-7764	81349	RCR07G222JS
3	56	5905-00-261-7313	32997	3386F-1-102
3	57	5905-00-186-9548	81349	RNC55H5901BS
3	58	5905-01-126-8111	81349	RNC55H1133DS
3	59	5905-01-052-0978	81349	RNC55H1004BS
3	60	5905-01-306-5238	91637	CSC05A-01-223J
3	61	5905-00-252-1671	81349	RCR07G225JS
3	62	5905-00-131-1255	81349	RCR07G122JS
3	63	5905-00-141-1183	81349	RCR07G101JS
3	64	5905-00-141-0743	81349	RCR07G392JS
3	65	5905-00-106-1356	81349	RCR07G152JS

SECTION IV

CROSS-REFERENCE INDEXES

FIGURE AND ITEM NUMBER INDEX				
FIG.	ITEM	STOCK NUMBER	FSCM	PART NUMBER
3	66	5905-01-306-1156	91637	CSC09A-01-332J
3	67	5905-00-114-0711	81349	RCR07G472JS
3	68		81349	RCR07GF335JS
3	69	5905-00-119-8768	81349	RCR07G821JS
3	70	5905-00-107-0656	81349	RCR07G100JS
3	71	5905-01-207-6436	81349	RJR24FWL02R
3	72	5905-01-066-3753	81349	RNC55H3901BS
3	73	5905-00-570-5042	81349	RNC55J2201BS
3	74		14240	HA-55-820-.1%-50 PPM
3	75	5905-01-066-6254	81349	RNC55H4301BS
3	76	5905-01-097-3213	32997	4310R-101-103
3	77	5930-01-276-8937	28480	3101-2371
3	78	5935-01-278-6878	30010	20-2136J
3	79	5962-01-088-3862	81349	M38510/11201BCB
3	80	5935-01-306-8795	21793	R-17-1026
3	81	5962-01-113-6179	81349	M38510/05802BCB
3	82		15818	TSC8750CJ
3	83	5962-01-106-4876	04713	MC6821P
3	84	5962-00-302-3963	27014	DM54L42AJ/883B
3	85	5962-01-068-1039	81349	M38510/31401BEB
3	86	5962-01-207-7131	01295	SN74HC00N
3	87	5962-01-303-3097	21793	R-22-8566
3	88	5962-01-303-3098	21793	R-22-8565
3	89	5962-01-303-3099	21793	R-22-8564
3	90	5962-01-303-3100	21793	R-22-8563
3	91	5962-01-188-2933	81349	M38510/24502BVB
3	92		01295	74ALS245A-1N
3	93	5962-01-086-7634	81349	M38510/32403BRB
3	94	5962-01-050-0918	81349	M38510/30701BEB
3	95	5962-01-067-9804	81349	M38510/30702BEB
3	96	5962-01-026-6055	81349	M38510/30009BCB
3	97	5962-01-093-8823	81349	M38510/32401BRB
3	98	5962-01-097-0012	04713	MC6802P
3	99	5962-01-058-1539	81349	M38510/30102BCB
3	100	5962-00-369-9839	81349	M38510/00803BCB
3	101	5962-01-031-7030	05869	725000-813
3	102	5962-01-027-6863	81349	M38510/30003BCB
3	103	5962-01-158-9149	81349	M38510/31005BCB
3	104		07263	UA79MGUIC
3	105		07263	UA78MGUIC
3	106	5962-01-306-5554	22119	ZN458B
3	107		27014	MM74HC4075
3	108		67268	59628868501PA
3	109	5962-01-262-3916	18714	CA3078AE
3	110		71279	450-2213-01-03-1 0
3	111		21793	R-13-1941
3	112		U0928	F27/PC
3	113	5935-01-086-7423	81349	M83734/3-015
3	114		06776	ICL-246-S7T

SECTION IV

CROSS-REFERENCE INDEXES

FIGURE AND ITEM NUMBER INDEX				
FIG.	ITEM	STOCK NUMBER	FSCM	PART NUMBER
4	2	6150-01-306-4713	21793	R-10-2702
4	3	5910-01-136-5277	21793	100080
4	4	5910-01-288-4122	55680	ULB1E470M
4	5		56289	513D107M025884
4	6		56289	C030B102E8R2D
4	7	5910-00-838-9421	81349	CK60AW102M
4	8	5910-00-788-0328	21793	100063
4	9	5910-01-299-4462	61725	PMT2R1.0J100
4	10	5910-00-840-7312	27914	10216-0028
4	11	5910-01-262-1707	61725	PMT2R.22J100
4	12		K8918	21-1529
4	13		74840	105RSS050M
4	14	5910-01-129-0054	04222	3439-100E-104M
4	15	5910-00-989-3595	60705	561CC0KBA102EE2R 2D
4	16	5910-01-202-6163	61725	TAPS22K16
4	17		61725	PMT2R0.01J400
4	18	5910-01-145-3147	15238	PMT2R0.1J100
4	19	5910-00-864-8389	56289	5GAD25
4	20	5910-01-306-8742	60705	561CU2JBA102EE27 OK
4	21	5910-00-098-8532	18796	8141M200C0G0472G
4	22	5961-00-048-7106	81349	JAN1N5712
4	23	5961-01-306-2453	09553	28371-371S
4	24	5961-00-450-3022	07263	1N4149
4	25	5961-00-112-2578	35784	BZX79C6V8
4	26		14433	ZPD2/7
4	27		U3441	TR-11.1510.009
4	28	5935-01-014-2261	53387	3428-2002
4	29		52072	CA-S-03-SP100-43 0
4	30	5961-01-027-5744	17856	J105-18
4	31		17856	J271
4	32		35784	BC109
4	33	5961-01-108-0168	17856	J108
4	34	5961-00-107-2678	80131	2N4416
4	35	5961-01-093-8344	04713	BFY90
4	36	5961-01-274-7544	17856	J176
4	37	5961-00-068-9152	07263	2N2369
4	38	5905-00-106-3666	81349	RCR07G103JS
4	39	5905-00-110-0388	81349	RCR07G104JS
4	40	5905-00-429-9721	81349	RNC55H1471DS
4	41	5905-00-402-6917	81349	RNC55H5620FS
4	42	5905-00-421-0843	21793	000102
4	43	5905-01-086-2746	81349	RNC55H2032BS
4	44	5905-00-189-1798	81349	RNC55H1211BS
4	45	5905-00-126-6683	81349	RCR07G332JS
4	46	5905-00-421-0847	21793	000473
4	47	5905-00-106-1278	81349	RCR07G123JS
4	48	5905-00-115-3560	81349	RCR07G183JS
4	49	5905-00-119-3505	81349	RCR07G683JS

SECTION IV

CROSS-REFERENCE INDEXES

FIGURE AND ITEM NUMBER INDEX				
FIG.	ITEM	STOCK NUMBER	FSCM	PART NUMBER
4	50	5905-00-138-3376	81349	RNC55H1001FS
4	51	5905-00-105-7765	81349	RRCR07G224JS
4	52	5905-01-043-1326	81349	RNC55H1322BS
4	53	5905-00-115-8055	81349	RRCR07G393JS
4	54	5905-01-024-9111	32997	3386F-1-503
4	55	5905-01-043-1326	81349	RNC55H1322BS
4	56	5905-00-758-5009	81349	RNC55H1213FS
4	57	5905-00-114-5339	81349	RRCR07G154JS
4	58	5905-00-139-2104	81349	RNC55H1823BS
4	59	5905-00-135-3973	81349	RRCR07G221JS
4	60	5905-01-127-7409	21793	000474
4	61	5905-00-119-3504	81349	RRCR07G273JS
4	62	5905-00-485-4545	81349	RRCR07G334JS
4	63	5905-00-114-0711	81349	RRCR07G472JS
4	64	5905-00-261-7313	32997	3386F-1-102
4	65	5905-00-118-4559	81349	RRCR07G333JS
4	66	5905-01-125-5612	81349	RNC55H3321DS
4	67	5905-01-126-7984	81349	RNC55H1431DS
4	68	5905-00-421-0842	21793	000101
4	69	5905-01-139-0363	81349	RNC55H2261BS
4	70	5905-00-116-8554	81349	RRCR07G105JS
4	71	5905-01-012-3034	73138	72PMR100K
4	72	5905-00-119-8812	81349	RRCR07G121JS
4	73	5905-01-116-8829	21793	000182
4	74	5905-00-116-8555	81349	RRCR07G153JS
4	75	5905-00-273-9776	81349	RNC55H1691BS
4	76	5905-01-155-7657	32997	3386F-1-500
4	77	5905-00-288-7704	81349	RNC55H2432BS
4	78	5905-00-547-8845	81349	RNC55H1003DS
4	79	5905-00-305-5301	81349	RNC55J2701BS
4	80	5905-00-104-8364	81349	RRCR07G125JS
4	81	5905-00-189-1814	81349	RNC55H1301BS
4	82	5905-00-428-2291	32997	3386F-1-201
4	83	5905-00-549-1627	81349	RNC55J8871BS
4	84	5905-00-115-3562	81349	RRCR07G394JS
4	85	5905-00-204-7744	81349	RNC55H1002DS
4	86	5905-00-105-7768	81349	RRCR07G561JS
4	87	5905-01-252-0332	81349	RNC55J2700BS
4	88	5905-00-111-4727	81349	RRCR07G272JS
4	89	5905-01-185-5596	81349	RLR20C2200GS
4	90	5905-00-116-8556	81349	RRCR07G223JS
4	91	5905-01-198-1444	81349	RLR20C3920FS
4	92		01121	001794
4	93	5935-01-278-6878	30010	20-2136-J
4	94	5961-01-100-5002	02735	CA3146E
4	95	5962-01-090-1936	96214	804940-1
4	96		52648	SP9680DP
4	97	5962-01-121-1969	04713	MC7905.2CTD
4	98	5962-01-110-9930	27014	LM340AT-5.0
4	99	5962-00-172-8261	96214	536958-1
4	100	5962-01-081-3918	27014	LF356J

SECTION IV

CROSS-REFERENCE INDEXES

FIGURE AND ITEM NUMBER INDEX				
FIG.	ITEM	STOCK NUMBER	FSCM	PART NUMBER
4	101	5962-01-135-0963	31361	1688-926
5	1		21793	601834
5	2		217793	601835
5	3		55322	CSP/25-3-D-24-S5
5	4		0AX74	ASI-3605





RECOMMENDED CHANGES TO EQUIPMENT TECHNICAL PUBLICATIONS



THEN... JOT DOWN THE DOPE ABOUT IT ON THIS FORM. CAREFULLY TEAR IT OUT. FOLD IT AND DROP IT IN THE MAIL!

SOMETHING WRONG WITH THIS PUBLICATION?

FROM: (PRINT YOUR UNIT'S COMPLETE ADDRESS)  
 Commander  
 Stateside Army Depot  
 ATTN: AMSTA-US  
 Stateside, N.J. 07703-5007

DATE SENT  
 10 July 1975

PUBLICATION NUMBER TM 11-5840-340-20P	PUBLICATION DATE 23 Jan 78	PUBLICATION TITLE Radar Set AN/PRC-76
--	-------------------------------	--

BE EXACT. PIN-POINT WHERE IT IS				IN THIS SPACE TELL WHAT IS WRONG AND WHAT SHOULD BE DONE ABOUT IT:
PAGE NO	PARA-GRAPH	FIGURE NO	TABLE NO	
33				For item 2, change the NSN to read: 5835-00-134-9186. Reason: Accuracy.
44		19		Identify the cover on the junction box (item no. 5). Reason: It is a separate item and is not called out on figure 19.
45				Add the cover of the junction box as an item in the listing for figure 19. Reason: Same as above

SAMPLE

PRINTED NAME, GRADE OR TITLE, AND TELEPHONE NUMBER  
 SSG I. M. DeSpirit of 999-1776

SIGN HERE

DA FORM 2028-2  
 1 JUL 79

PREVIOUS EDITIONS ARE OBSOLETE.

P.S.--IF YOUR OUTFIT WANTS TO KNOW ABOUT YOUR RECOMMENDATION MAKE A CARBON COPY OF THIS AND GIVE IT TO YOUR HEADQUARTERS

TEAR ALONG PERFORATED LINE

FILL IN YOUR  
UNIT'S ADDRESS

FOLD BACK

DEPARTMENT OF THE ARMY

\_\_\_\_\_  
\_\_\_\_\_

OFFICIAL BUSINESS



**SAMPLE**

Commander  
US Army Communications-Electronics Command  
and Fort Monmouth  
ATTN: AMSEL-LC-ME-PS  
Fort Monmouth, New Jersey 07703-5000

TEAR ALONG PERFORATED LINE

RECOMMENDED CHANGES TO EQUIPMENT TECHNICAL PUBLICATIONS



THEN...JOT DOWN THE DOPE ABOUT IT ON THIS FORM. CAREFULLY TEAR IT OUT, FOLD IT AND DROP IT IN THE MAIL.

SOMETHING WRONG WITH THIS PUBLICATION?

FROM: (PRINT YOUR UNIT'S COMPLETE ADDRESS)

DATE SENT

PUBLICATION NUMBER TM 11-6625-3200-24P	PUBLICATION DATE 15 Jan 1990	PUBLICATION TITLE Voltmeter ME-545/G
---	---------------------------------	---

BE EXACT PIN-POINT WHERE IT IS				IN THIS SPACE TELL WHAT IS WRONG AND WHAT SHOULD BE DONE ABOUT IT:
PAGE NO.	PARA-GRAPH	FIGURE NO.	TABLE NO.	

TEAR ALONG PERFORATED LINE

PRINTED NAME GRADE OR TITLE AND TELEPHONE NUMBER

SIGN HERE

FILL IN YOUR  
UNIT'S ADDRESS

FOLD BACK

DEPARTMENT OF THE ARMY

\_\_\_\_\_  
\_\_\_\_\_

OFFICIAL BUSINESS



TEAR ALONG PERFORATED LINE

Commander  
US Army Communications-Electronics Command  
and Fort Monmouth  
ATTN: AMSEL-LC-ME-PS  
Fort Monmouth, New Jersey 07703-5000

RECOMMENDED CHANGES TO EQUIPMENT TECHNICAL PUBLICATIONS



THEN...JOT DOWN THE DOPE ABOUT IT ON THIS FORM. CAREFULLY TEAR IT OUT, FOLD IT AND DROP IT IN THE MAIL.

SOMETHING WRONG WITH THIS PUBLICATION?

FROM: (PRINT YOUR UNIT'S COMPLETE ADDRESS)

DATE SENT

PUBLICATION NUMBER TM 11-6625-3200-24P	PUBLICATION DATE 15 Jan 1990	PUBLICATION TITLE Voltmeter ME-545/G
---	---------------------------------	---

BE EXACT PIN-POINT WHERE IT IS				IN THIS SPACE TELL WHAT IS WRONG AND WHAT SHOULD BE DONE ABOUT IT:
PAGE NO.	PARA-GRAPH	FIGURE NO.	TABLE NO.	

IT IS ALONG PERFORATED LINE

PRINTED NAME GRADE OR TITLE AND TELEPHONE NUMBER

SIGN HERE

FILL IN YOUR  
UNIT'S ADDRESS

FOLD BACK

DEPARTMENT OF THE ARMY

---

---

OFFICIAL BUSINESS



TEAR ALONG PERFORATED LINE

Commander  
US Army Communications-Electronics Command  
and Fort Monmouth  
ATTN: AMSEL-LC-ME-PS  
Fort Monmouth, New Jersey 07703-5000

RECOMMENDED CHANGES TO EQUIPMENT TECHNICAL PUBLICATIONS



# SOMETHING WRONG WITH THIS PUBLICATION?

THEN...JOT DOWN THE DOPE ABOUT IT ON THIS FORM. CAREFULLY TEAR IT OUT, FOLD IT AND DROP IT IN THE MAIL.

FROM: (PRINT YOUR UNIT'S COMPLETE ADDRESS)

DATE SENT

PUBLICATION NUMBER

PUBLICATION DATE

PUBLICATION TITLE

TM 11-6625-3200-24P

15 Jan 1990

Voltmeter ME-545/G

BE EXACT PIN-POINT WHERE IT IS

PAGE NO.	PARA-GRAPH	FIGURE NO.	TABLE NO.
----------	------------	------------	-----------

**IN THIS SPACE TELL WHAT IS WRONG AND WHAT SHOULD BE DONE ABOUT IT:**

TEAR ALONG PERFORATED LINE

PRINTED NAME GRADE OR TITLE AND TELEPHONE NUMBER

SIGN HERE

DA FORM 2028-2  
1 JUL 79

PREVIOUS EDITIONS ARE OBSOLETE

P.S. IF YOUR OUTFIT WANTS TO KNOW ABOUT YOUR RECOMMENDATION MAKE A CARBON COPE OF THIS AND GIVE IT TO YOUR HEADQUARTERS.

FILL IN YOUR  
UNIT'S ADDRESS

FOLD BACK

DEPARTMENT OF THE ARMY

---

---

OFFICIAL BUSINESS



TEAR ALONG PERFORATED LINE

Commander  
US Army Communications-Electronics Command  
and Fort Monmouth  
ATTN: AMSEL-LC-ME-PS  
Fort Monmouth, New Jersey 07703-5000



By Order of the Secretary of the Army:

CARL E. VUONO  
*General, United States Army*  
*Chief of Staff*

Official:

WILLIAM J. MEEHAN II  
*Brigadier General, United States Army*  
*The Adjutant General*

Distribution:

To be distributed in accordance with special list.





