

TECHNICAL MANUAL

**DIRECT SUPPORT AND GENERAL SUPPORT MAINTENANCE
REPAIR PARTS AND SPECIAL TOOLS LISTS
(INCLUDING DEPOT MAINTENANCE REPAIR PARTS AND SPECIAL TOOLS)
FOR
TERMINAL, TELEGRAPH TH-22/TG
(NSN 5805-00-907-8300)**

HEADQUARTERS, DEPARTMENT OF THE ARMY

16 OCTOBER 1978

TECHNICAL MANUAL }
 No. 11-5805-356-34P-1 }

HEADQUARTERS
 DEPARTMENT OF THE ARMY
 WASHINGTON, DC 16 October 1978

**DIRECT SUPPORT AND GENERAL SUPPORT MAINTENANCE
 REPAIR PARTS AND SPECIAL TOOLS LISTS
 (INCLUDING DEPOT MAINTENANCE REPAIR PARTS AND SPECIAL TOOLS)
 FOR
 TERMINAL, TELEGRAPH TH-22/TG
 (NSN 5805-00-907-8300)**

Current as of 15 June 1978

REPORTING OF ERRORS

You can improve this manual by recommending improvements using DA Form 2028-2 located in the back of the manual. Simply tear out the self addressed form, fill it out as shown on the sample, fold it where shown, and drop it in the mail.

If there are no blank DA Forms 2028-2 in the back of your manual, use the standard DA Form 2028 (Recommended Changes to Publications and Blank Forms) and forward to the Commander, US Army Communications and Electronics Materiel Readiness Command, ATTN: DRSEL-ME-MQ, Fort Monmouth, NJ 07703.

In either case a reply will be furnished direct to you.

		Page	Illus Figure
SECTION	I.	Introduction	1
	II.	Repair parts list	5
Group	02	Terminal, Telegraph TH-22/TG	5
		0201 Send card 1A1	13
		0202 Break-in detector card 1A2	19
		0203 Receive card 1A3	23
SECTION	III.	Special tools list (Non applicable)	
	IV.	National stock number and part number index25

* This manual supersedes TM 11-5805-356-34P-1, 31 August 1976.

SECTION I

INTRODUCTION

1. Scope

This manual lists repair parts and special tools required for performance of direct support and general support maintenance of TH-22/TG.

2. General

This Repair Parts and Special Tools List is divided into the following sections:

a. Section II. Repair Parts List. A list of repair parts authorized for use in the performance of maintenance. The list also includes parts which must be removed for replacement of the authorized parts. Parts lists are composed of functional groups in ascending numerical sequence, with the parts in each group listed in figure and item number sequence.

b. Section III. Special Tools List. Not applicable.

c. Section IV. National Stock Number and Part Number Index. A list, in ascending National item identification number (NIIN, last 9 digits) sequence, of all National stock numbers appearing in the listings, followed by a list, in alphabetic sequence, of all part numbers appearing in the listings. National stock number and part numbers are cross-referenced to each illustration figure and item number appearance.

3. Explanation of Columns

The following provides an explanation of columns found in the tabular listings:

a. Illustration. This column is divided as follows:

(1) *Figure number.* Indicates the figure number of the illustration in which the item is shown.

(2) *Item number.* The number used to identify each item called out in the illustration.

b. Source, Maintenance, and Recoverability Codes (SMR).

(1) *Source code.* Source codes are assigned to support items to indicate the manner of acquiring support items for maintenance, repair, or overhaul of end items. Source codes are entered in the first and second positions of the Uniform SMR Code format as follows:

<i>Code</i>	<i>Definition</i>
PA	Item procured and stocked for anticipated or known usage.
XA	Item is not procured or stocked because the requirements for item will result in the replacement of the next higher assembly.

<i>Code</i>	<i>Definition</i>
XD	A support item that is not stocked. When required, item will be procured through normal supply channels.

NOTE

Cannibalization or salvage may be used as a source of supply for any items source coded above except those coded XA, XD, and aircraft support items as restricted by AR 700-42.

(2) *Maintenance code.* Maintenance codes are assigned to indicate the levels of maintenance authorized to USE and REPAIR support items. The maintenance codes are entered in the third and fourth positions of the Uniform SMR Code format as follows:

(a) The maintenance code entered in the third position will indicate the lowest maintenance level authorized to remove, replace, and use the support item. The maintenance code entered in the third position will indicate one of the following levels of maintenance:

<i>Code</i>	<i>Application/Explanation</i>
O	Support item is removed, replaced, used at the organizational level.
F	Support item is removed, replaced, used at the direct support level.
H	Support item is removed, replaced, used at the general support level.

(b) The maintenance code entered in the fourth position indicates whether the item is to be repaired and identifies the lowest maintenance level with the capability to perform complete repair (i.e., all authorized maintenance functions). This position will contain one of the following maintenance codes:

<i>Code</i>	<i>Application/Explanation</i>
H	The lowest maintenance level capable of complete repair of the support item is the general support level.
Z	Nonreparable. No repair is authorized.

(3) *Recoverability code.* Recoverability codes are assigned to support items to indicate the disposition action on unserviceable items. The recoverability code is entered in the fifth position of the Uniform SMR Code format as follows:

<i>Recoverability code</i>	<i>Definition</i>
Z	Nonreparable item. When unserviceable, condemn and dispose at the level indicated in position 3.

*Recoverability
code*

Definition

H – Reparable item. When uneconomically repairable, condemn and dispose at the general support level.

D – Reparable item. When beyond lower level repair capability, return to depot. Condemnation and disposal not authorized below depot level.

c. National Stock Number. Indicates the National stock number assigned to the item and will be used for requisitioning purposes.

d. Part Number. Indicates the primary number used by the manufacturer (individual, company, firm, corporation, or Government activity), which controls the design and characteristics of the item by means of its engineering drawings, specifications standards, and inspection requirements, to identify an item or range of items.

NOTE

When a stock numbered item is requisitioned, the repair part received may have a different part number than the part being replaced.

e. Federal Supply Code for Manufacturer (FSCM). The FSCM is a 5-digit numeric code listed in SB 708-42 which is used to identify the manufacturer, distributor, or Government agency, etc.

f. Description. Indicates the Federal item name and, if required, a minimum description to identify the item.

g. Unit of Measure (U/M). Indicates the standard of the basic quantity of the listed item as used in performing the actual maintenance function. This measure is expressed by a two-character alphabetical abbreviation (e.g., ea, in, pr, etc.). When the unit of measure differs from the unit of issue, the lowest unit of issue that will satisfy the required units of measure will be requisitioned.

h. Quantity Incorporated in Unit. Indicates the quantity of the item used in the breakout shown

on the illustration figure, which is prepared for a functional group, subfunctional group, or an assembly.

The following publications pertain to the TH-22/TG and its components:

TM 11-5805-356-12, Terminal, Telegraph-Telephone AN/TCC-29 (Including Terminal, Telegraph TH-22/TC and Converter, Telegraph-Telephone Signal CV-425/U)

TM 11-5805-356-34-1, Terminal, Telegraph TH-22/TG and Filter Assembly, Electrical F-316/U

5. How to Locate Repair Parts

a. When National stock number or part number is unknown.

(1) *First.* Using the table of contents, determine the functional group within which the repair part belongs. This is necessary since illustrations are prepared for functional groups and listings are divided into the same groups.

(2) *Second.* Find the illustration covering the functional group to which the repair part belongs.

(3) *Third.* Identify the repair part on the illustration and note the illustration figure and item number of the repair part.

(4) *Fourth.* Using the Repair Parts Listing, find the figure and item number noted on the illustration.

b. When National stock number or part number is known.

(1) *First.* Using the Index of National Stock Numbers and Part Numbers, find the pertinent National Stock number or part number. This index is in ascending NIIN sequence followed by a list of part numbers in ascending alphameric sequence, cross-referenced to the illustration figure number and item number.

(2) *Second.* After finding the figure and item number, locate the figure and item number in the repair parts list.

6. Abbreviations

Not applicable.

(Next printed page is 4)

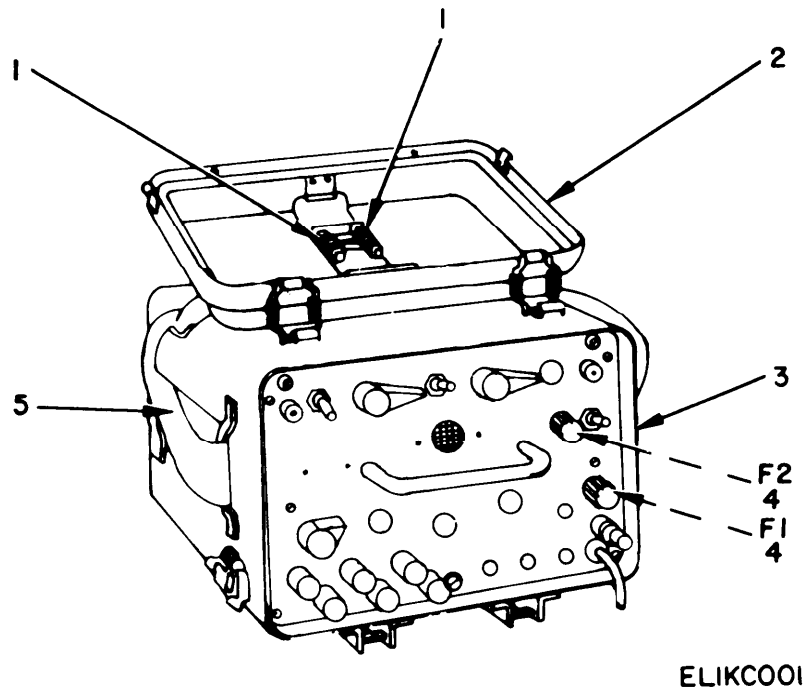


Figure 1. Terminal, Telegraph TH-22/TG (Sheet 1 of 7).

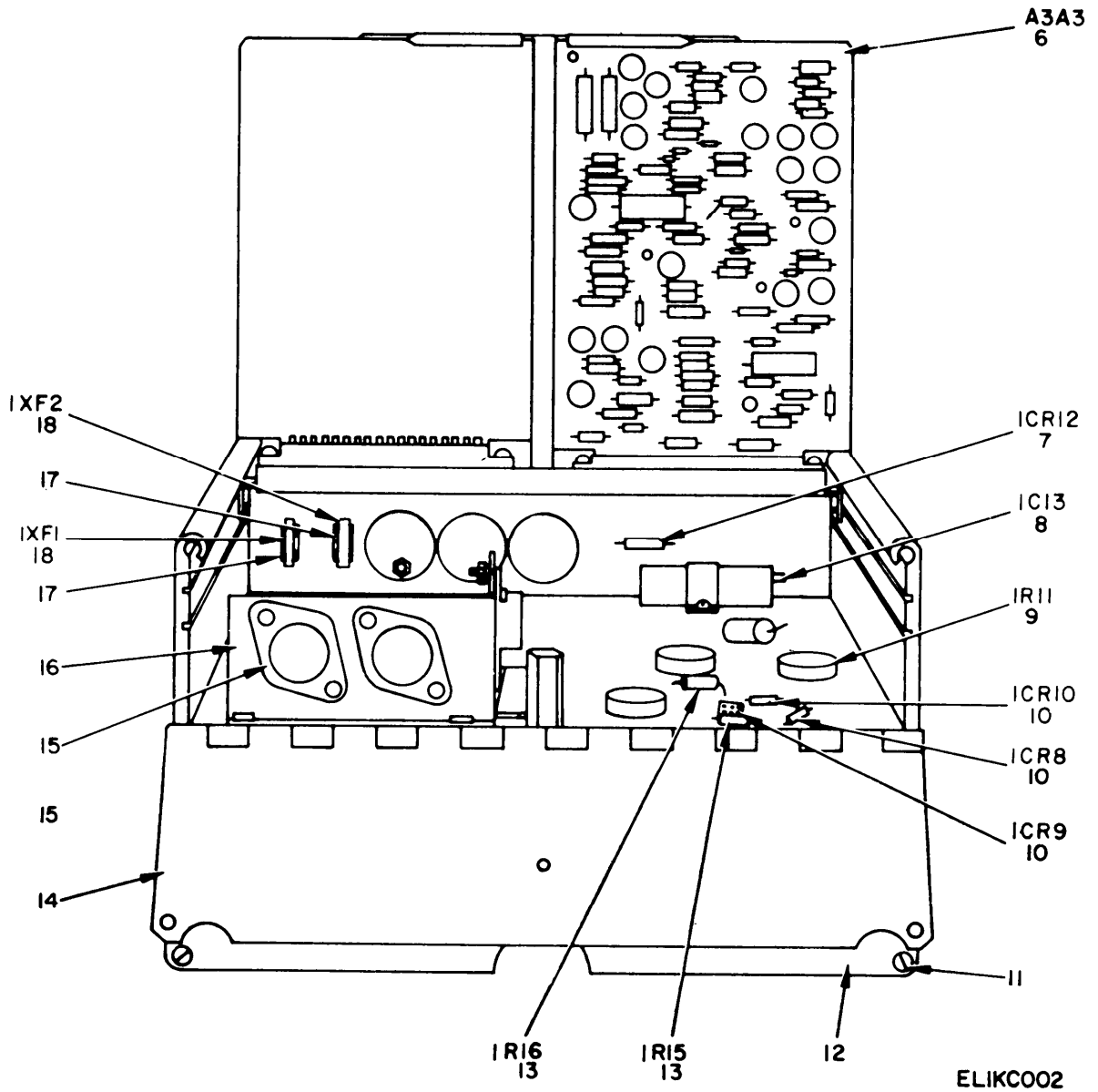
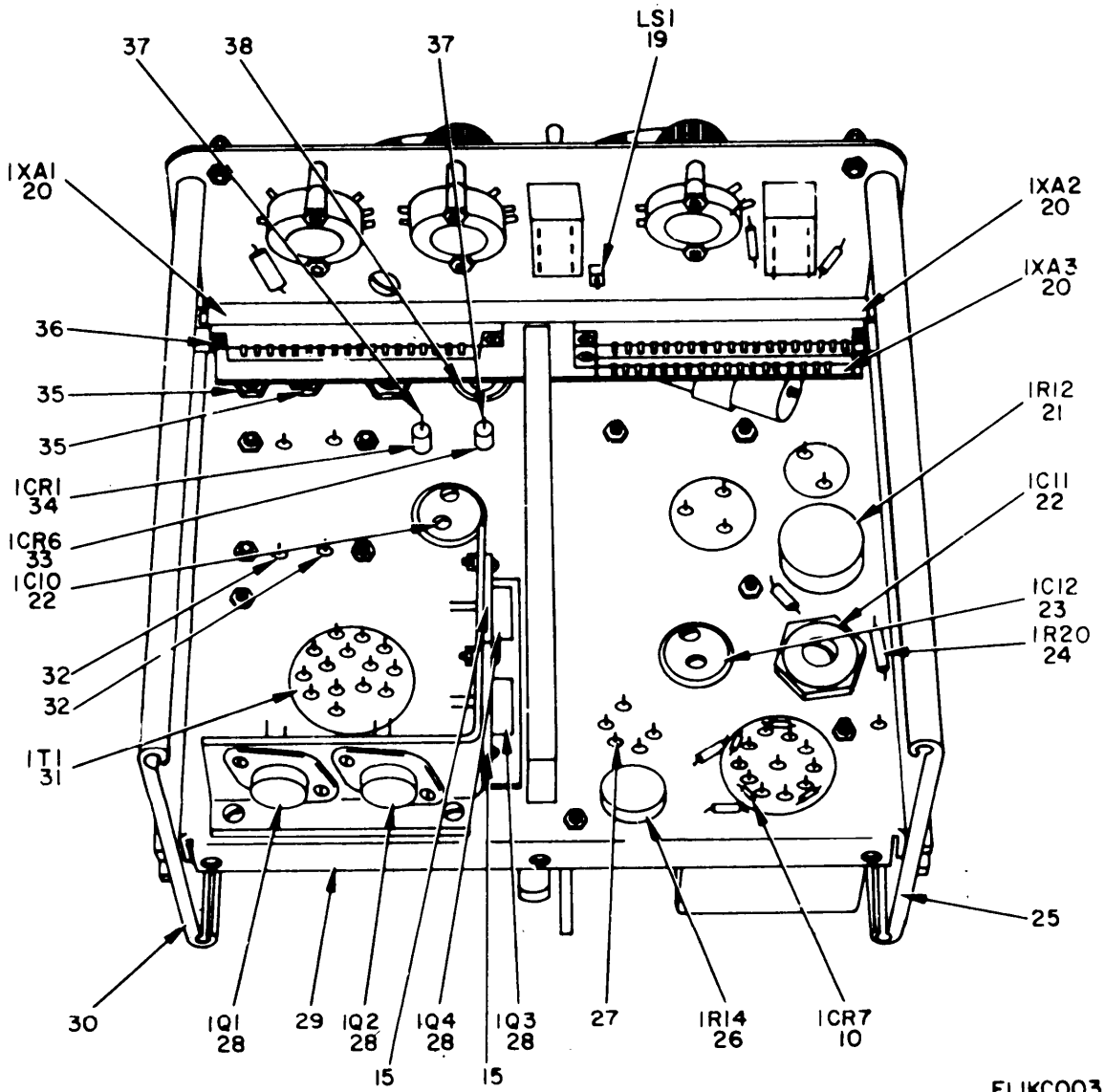
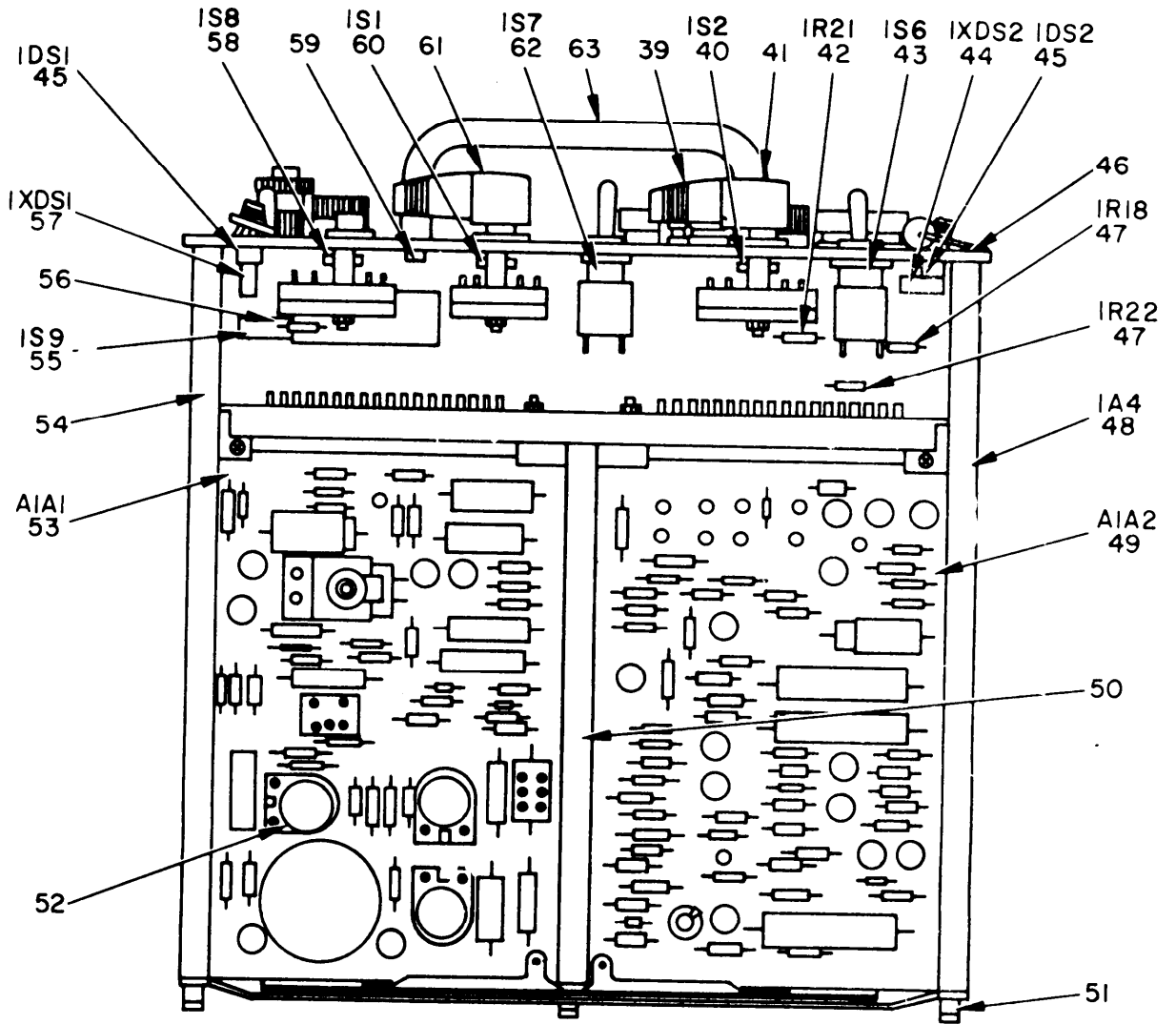


Figure 1. Terminal, Telegraph TH-22/TG, Rear View (Sheet 2 of 7).



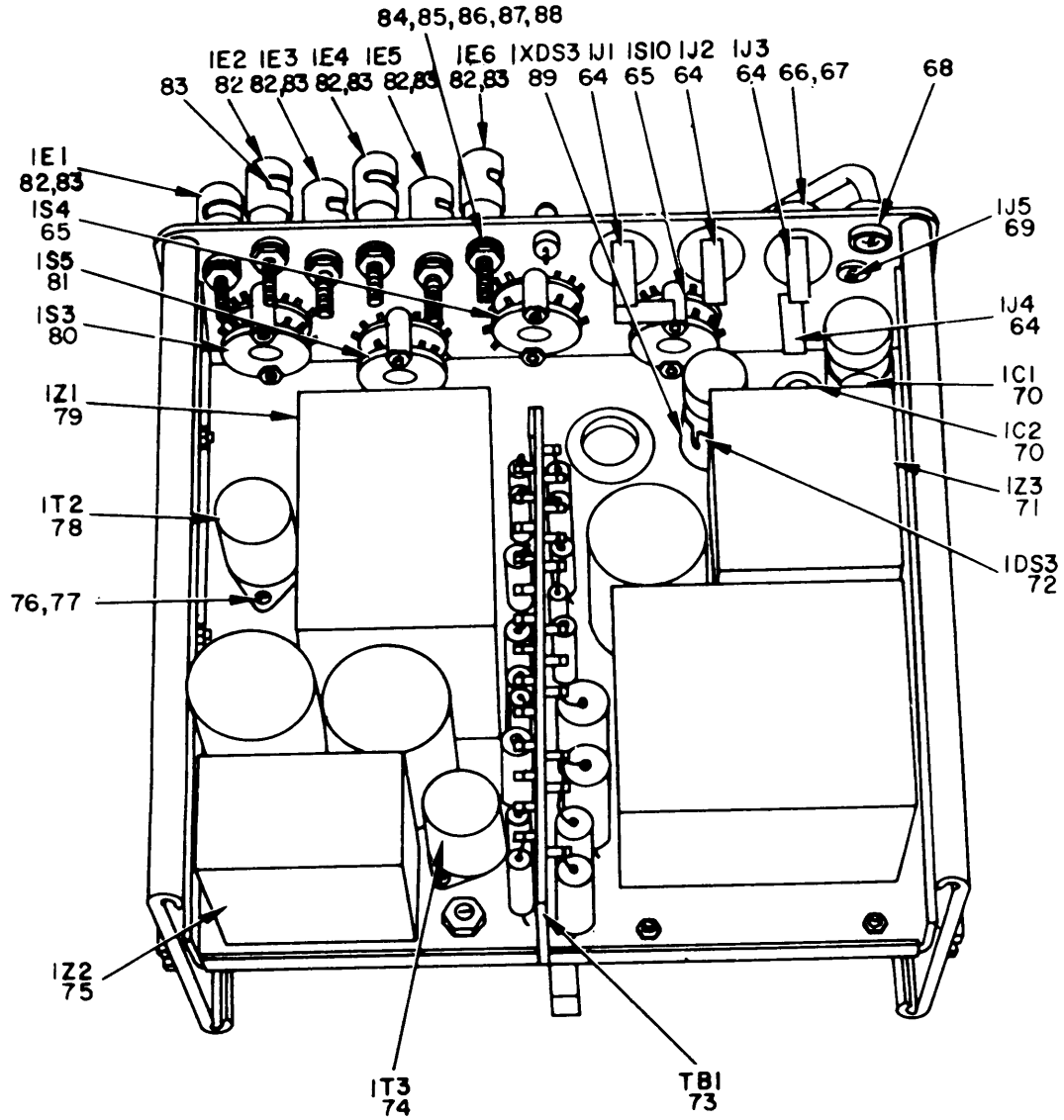
ELIK003

Figure 1. Terminal, Telegraph TH-22/TG.
Top View with PC Board Removed (Sheet 3 of 7).



ELIKC004

Figure 1. Terminal, Telegraph TH-22/TG, Top View (Sheet 4 of 7).



ELIKC005

Figure 1. Terminal, Telegraph TH-22/TG, Bottom View (Sheet 5 of 7).

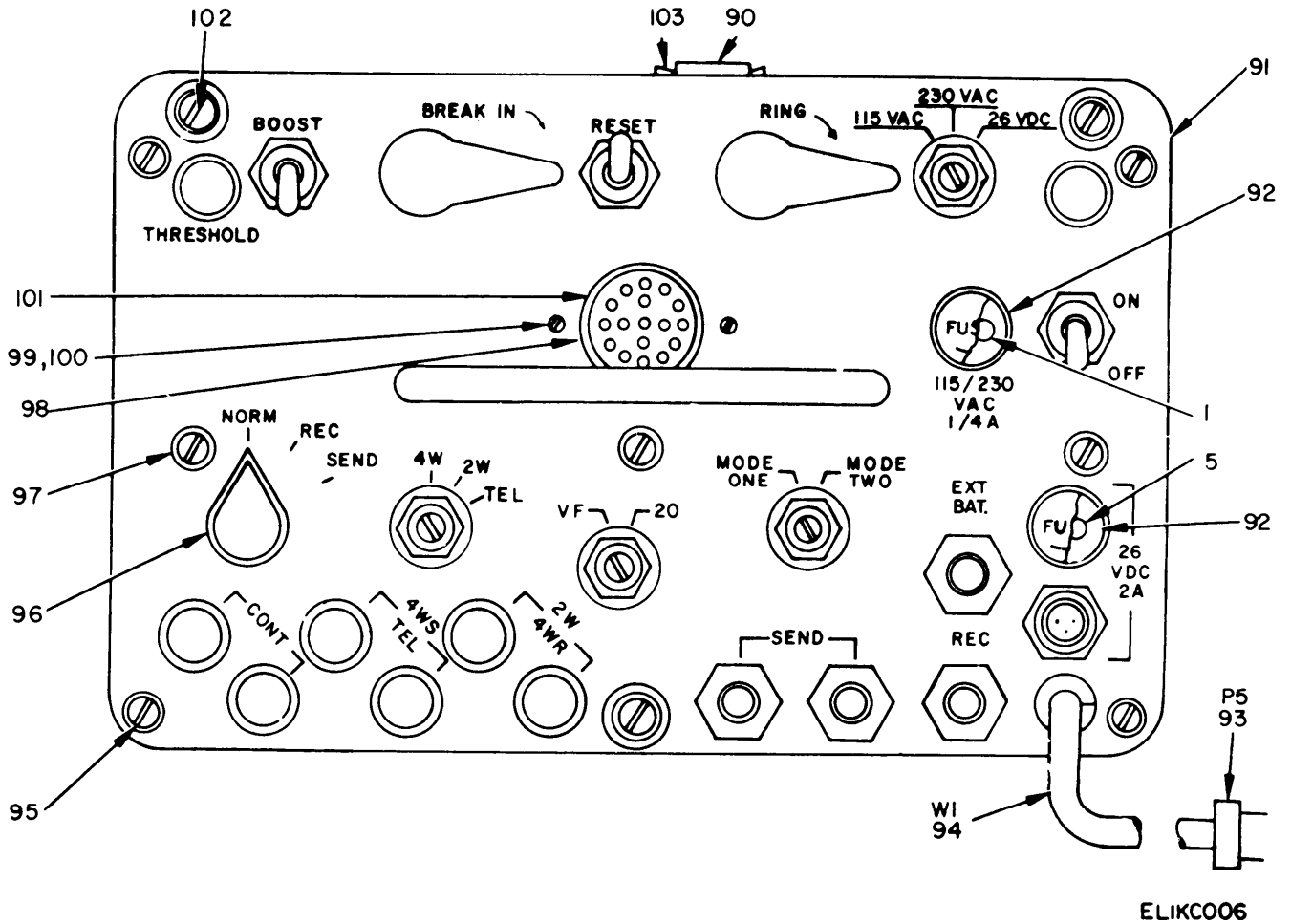
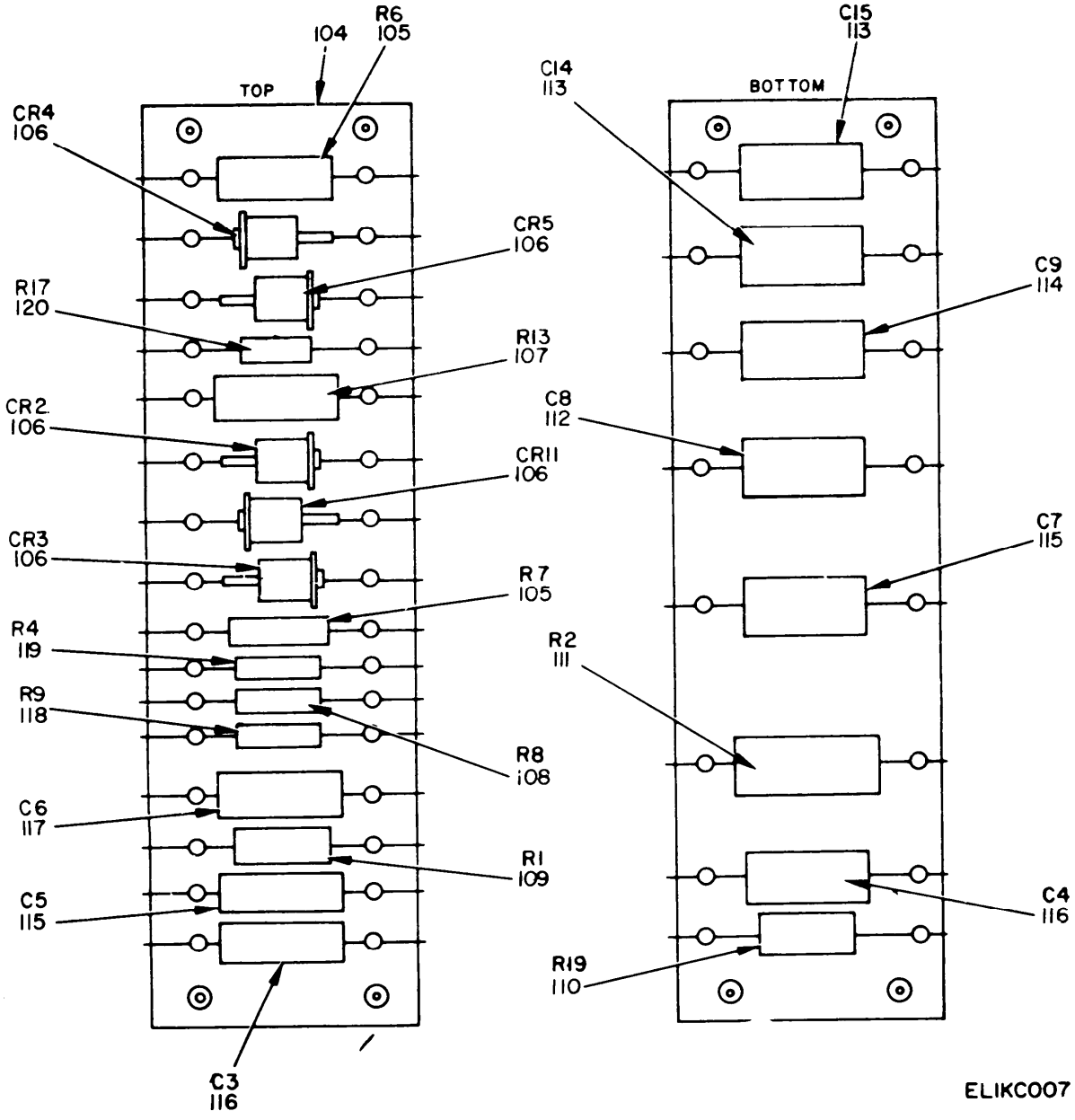


Figure 1. Terminal, Telegraph TH-22/TG, Front View (Sheet 6 of 7).



ELIKC007

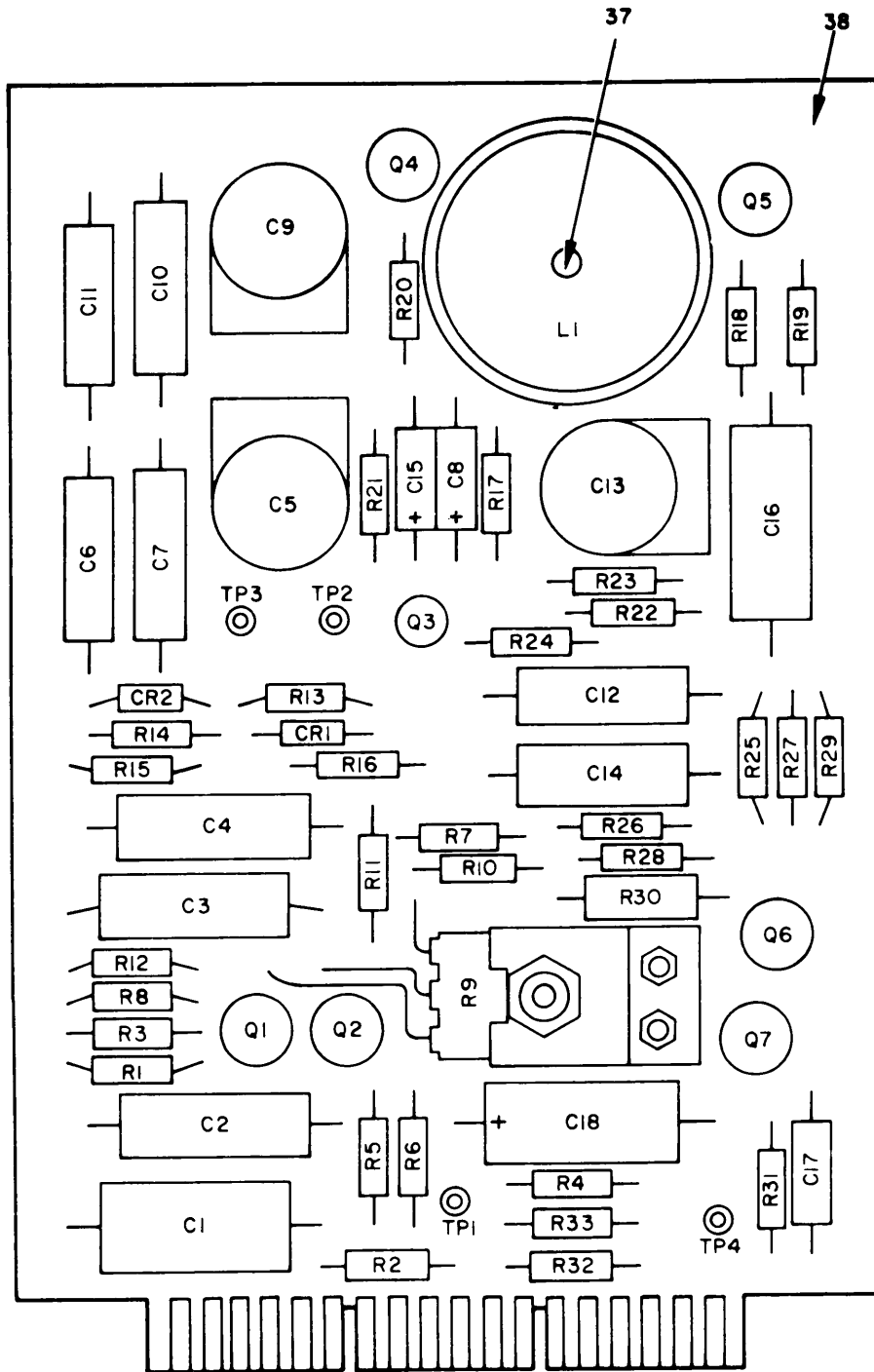
Figure 1. Terminal, Telegraph TH-22/TG, Terminal Board 1TB1 (Sheet 7 of 7).

(1) ILLUSTRATION (a) FIG NO.	(2) (b) ITEM NO.	(3) SMR CODE	(4) NATIONAL STOCK NUMBER	(5) PART NUMBER	(6) FSCM	(7) DESCRIPTION USABLE ON CODE	(8) QTY INC IN UNIT
GROUP 02 TERMINAL, TELEGRAPH TH-22/TG							
1	1	PAOZZ	5920-00-280-5031	F02A250V1-4AS	81349	FUSE, CARTRIDGE	EA 2
1	2			SCC98314GR4	80063	COVER ASSEMBLY	EA 1
1	3			SCD98303GR4	80063	CASE, ELECTRICAL, EQUIPMENT, CABINET	EA 1
1	4	PAOZZ	5920-00-474-6125	F02A250V2AS	81349	FUSE, CARTRIDGE	EA 2
1	5			SCB983168	80063	STRAP, WEBBING	EA 1
1	6	PAOHH	5805-00-999-5032	D80030020	96238	RECEIVE CARD	EA 1
1	7	PAFZZ	5961-00-087-6047	1N645	81350	SEMICONDUCTOR DEVICE, DIODE	EA 1
1	8	PAFZZ	5910-00-954-2898	CH10A1NV405K	81349	CAPACITOR, FIXED, PAPER	EA 1
1	9	PAFZZ	5905-00-957-8616	RW67V302	81349	RESISTOR, FIXED, WIREMOUND	EA 1
1	10	PAFZZ	5961-00-669-6884	1N277	81350	SEMICONDUCTOR DEVICE, DIODE	EA 4
1	11	XDFZZ		MS35233-30	96906	SCREW, MACHINE	EA 9
1	12			C90030007	96238	PANEL, CONNECTOR	EA 1
1	13	PAHZZ	5905-00-111-4841	RC20GF133J	81349	RESISTOR, FIXED, COMPOSITION	EA 2
1	14	XAFZZ		C90030006	96238	PANEL, REAR	EA 1
1	15	PAFZZ	5999-00-441-1688	7274775	16758	KIT, TRANSISTOR, MOUNTING	EA 4
1	16	XDFZZ		C62030051	96238	BRACKET, TRANSISTOR, MOUNTING	EA 1
1	17	XDFZZ		9224A140-1A	06540	SPACER, SLEEVE	EA 2
1	18	PAFZZ	5920-00-556-0144	FHN20G	80063	FUSEHOLDER	EA 2
1	19	PAFZZ	5965-00-871-8987	MC11J	54715	LOUDSPEAKER	EA 1
1	20	XDFZZ		B48000004	96238	CONNECTOR, RECEPTACLE, ELECTRICAL	EA 3
1	21	PAFZZ	5905-00-577-3717	RV4LAYS252A	81349	RESISTOR, VARIABLE	EA 1
1	22	PAHZZ	5910-00-850-9492	CE41C221G	81349	CAPACITOR, FIXED, ELECTROLYTIC	EA 2
1	23	PAHZZ	5910-00-897-9615	CE44C10IK	81349	CAPACITOR, FIXED, ELECTROLYTIC	EA 1
1	24	PAFZZ	5905-00-257-0937	RC42GF472J	81349	RESISTOR, FIXED, COMPOSITION	EA 1
1	25	PAFZZ		C90030005-02	96238	PANEL, SIDE	EA 1
1	26	PAFZZ	5905-00-643-9817	RV5LAYS252A	81349	RESISTOR, VARIABLE	EA 1
1	27	PAFZZ	5940-00-710-1671	FT940DTUR	98291	LUG, TERMINAL	EA 1
1	28	PAHZZ	5961-00-821-8976	2N297A	81349	TRANSISTOR	EA 4
1	29	XAFHD		D90030003	96238	CHASSIS, EQUIPMENT, ELECTRICAL	EA 1
1	30	XDFZZ		C90030005-01	96238	PANEL, SIDE	EA 1
1	31	XDFZZ		A43000043	96238	TRANSFORMER, POWER, STEPDOWN	EA 1
1	32	XDFZZ	5940-00-156-7344	2104-06-00	78189	LUG, TERMINAL	EA 2
1	33	PAHZZ	5960-00-848-8625	1N2982	81349	SEMICONDUCTOR DEVICE, DIODE	EA 1
1	34	PAFZZ	5961-00-892-0620	1N2988B	81349	SEMICONDUCTOR DEVICE, DIODE	EA 1
1	35	PAFZZ	5940-00-247-8217	80	79963	TERMINAL, LUG	EA 2
1	36	PAFZZ	5310-00-734-5661	MS35337-78	96906	WASHER, LOCK	EA 14
1	37	XDFZZ		8577A0632-1B	06540	NUT, SLEEVE	EA 1
1	38	PAFZZ	5805-00-936-5419	A50000009	96238	KIT, DIODE MOUNTING	EA 2
1	39	PAFZZ	5355-00-948-5455	B12016	96238	KNOB	EA 1

(1) ILLUSTRATION (a) FIG NO.	(2) (b) ITEM NO.	(3) SMR CODE	(4) NATIONAL STOCK NUMBER	(5) PART NUMBER	(6) FSCM	(7) DESCRIPTION	(8) QTY INC IN UNIT
1	40	PAFZZ	5930-00-930-5341	A46020035	96238	SWITCH, ROTARY	EA 1
1	41	XDFZZ	5305-00-515-7219	MS35233-17	96906	SCREW, MACHINE	EA 1
1	42	PAFZZ	5905-00-683-2240	RC07GF221J	81349	RESISTOR, FIXED, COMPOSITION	EA 1
1	43	PAFZZ	5930-00-615-7880	MS35059-26	81349	SWITCH, TOGGLE	EA 1
1	44	PAFZZ	6210-00-843-5609	MS25256-8	96906	LIGHT, INDICATOR	EA 1
1	45	PAFZZ	6240-00-155-7836	MS25237-327	96906	LAMP, INCANDESCENT	EA 2
1	46	XAFZZ		D90030002	96238	PANEL ASSEMBLY, FRONT	EA 1
1	47	PAFZZ	5905-00-725-6995	RC07GF271J	81349	RESISTOR, FIXED, COMPOSITON	EA 2
1	48	XAFZZ		D90030001	96238	CHASSIS ASSEMBLY	EA 1
1	49	XDOHH		D80030010	96238	BREAK-IN DETECTOR CARD	EA 1
1	50	XDHZZ		B90030008	96238	CARD GUIDE, CENTER	EA 1
1	51	XDHZ		B50400001-1	96238	SCREW, MACHINE	EA 3
1	52	PAFZZ	5310-00-934-9761	MS35649-64	96906	NUT, PLAIN, HEXAGON	EA 22
1	53	PAOHH	5805-00-999-5029	D80030030	96238	SEND CARD	EA 1
1	54	XAFZZ		C90030011	96238	CHASSIS, ELECTRICAL, EQUIPMENT	EA 1
1	55	PAFZZ	5930-00-655-1507	MS25100-22	96906	SWITCH, TOGGLE	EA 1
1	56	PAFZZ	5940-00-258-2120	379	79963	LUG, TERMINAL	EA 1
1	57	PAFZZ	6210-00-806-8845	MS25256-2	96906	LIGHT, INDICATOR	EA 1
1	58	PAFZZ	5930-00-930-5340	A46020034	96238	SWITCH, ROTARY	EA 1
1	59	PAFZZ	5305-00-059-3658	MS51958-62	96906	SCREW, MACHINE	EA 1
1	60	PAFZZ	5930-00-947-3327	A46020047	96238	SWITCH, ROTARY	EA 1
1	61	PAOZZ	5355-00-948-5452	2110-2	92701	KNOB	EA 1
1	62	PAFZZ	5930-00-526-0587	MS25098-30	96906	SWITCH, TOGGLE	EA 1
1	63	XDFZZ		SMB552122	80063	HANDLE, BOW	EA 1
1	64	PAFZZ	5935-00-192-4789	J7089	81349	JACK, TELEPHONE	EA 4
1	65	PAFZZ	5930-00-947-3019	A46020032	96238	SWITCH, ROTARY	EA 2
1	66	XDFZZ		A53000001-1	96238	NUT, BUSHING, NONMETALLIC	EA 1
1	67	PAFZZ	5330-00-933-8208	A53000001-2	96238	WASHER, NONMETALLIC	EA 1
1	68	PAFZZ	5975-00-926-3073	SR5L1	28520	BUSHING, STRAIN RELIEF	EA 1
1	69	PAFZZ	5935-00-578-3847	MC11E8-3SN	71468	CONNECTOR, RECEPTACLE, ELECTRICAL	EA 1
1	70	PAHZZ	5910-00-855-6634	CZ24BEE104	81349	CAPACITOR, FIXED, PAPER	EA 2
1	71	PAFZZ	5805-00-947-3396	A48092000	96238	RINGER, 20 CYCLE	EA 1
1	72	PAOZZ	6240-00-143-3060	MS15567-1	96906	LAMP, INCANDESCENT	EA 1
1	73	XDFHD		D80030040	96238	TERMINAL BOARD ASSEMBLY	EA 1
1	74	PAFZZ	5950-00-930-1300	A43001004	96238	TRANSFORMER, AUTOMATIC FREQUENCY	EA 1
1	75	PAFZZ	5950-00-945-7458	A43006000	96238	TRANSFORMER, DISCRIMINATOR	EA 1
1	76	PAFZZ	5305-00-934-9748	MS35649-244	96906	NUT, PLAIN, HEXAGON	EA 4
1	77	PAFZZ	5305-00-054-5648	MS1957-14	96906	SCREW, MACHINE	EA 2
1	78	PAFZZ	5950-00-996-1932	A43001003	96238	TRANSFORMER, AUTOMATIC FREQUENCY	EA 1
1	79	PAFZZ	5915-00-999-8711	A43020002	96238	FILTER, BAND PASS	EA 1

(1) ILLUSTRATION (a) FIG NO.	(2) (b) ITEM NO.	(3) SMR CODE	(4) NATIONAL STOCK NUMBER	(5) PART NUMBER	(6) FSCM	(7) DESCRIPTION USABLE ON CODE	(8) QTY INC IN UNIT
1	80	PAFZZ	5930-00-947-3023	A46020031	96238	SWITCH, ROTARY	EA 1
1	81	PAFZZ	5930-00-947-3024	A46020033	96238	SWITCH, ROTARY	EA 1
1	85	XDFZZ		U106U	81349	POST, BINDING	EA 6
1	83	XDOZZ	5970-00-869-6263	SCC76202-1	80063	CAP,ELECTRICAL	EA 6
1	84	XDFZZ		MS35650-104	96906	NUT,PLAIN,HEXAGON	EA 6
1	85	PAFZZ	5310-00-619-1148	MS15795-308	96906	WASHER,FLAT	EA 6
1	86	PAFZZ	5310-00-933-8120	MS35338-138	96906	WASHER,LOCK	EA 6
1	87	PAFZZ	5310-00-950-1514	NW10-4374	95987	WASHER,NONMETALLIC	EA 6
1	88	PAFZZ	5310-00-930-5289	SW10	95987	WASHER, SHOULDER	EA 1
1	89	PAFZZ	6250-00-947-7035	12-30XP13	95263	LAMPHOLDER	EA 1
1	90	XDDZZ		A57030035	96238	PLATE,IDENTIFICATION	EA 1
1	91	XDFZZ		C90030010	96238	PANEL,FRONT	EA 1
1	92	XDOZZ		34200HSA2	80063	CAP, ELECTRICAL	EA 2
1	93	PAFZZ	5935-00-655-4370	MC142-8-3PN	71468	CONNECTOR,PLUG,ELECTRICAL	EA 1
1	94	PAFZZ	5995-00-832-5164	B74000001-2	96238	CABLE ASSEMBLY,POWER,ELECTRICAL	EA 1
1	95	XDFZZ		MS51957-31	96906	SCREW,MACHINE	EA 7
1	96	PAOZZ	5355-00-556-0145	MS91528-1K2B	96906	KNOB	EA 1
1	97	PAFZZ	5310-00-043-1754	MS35337-79	96906	WASHER,LOCK	EA 34
1	98	XDFZZ		B62030010	96238	PLATE, INSULATOR	EA 1
1	99	PAFZZ	5310-00-285-7085	MS20365-440A	96906	NUT, PLAIN, HEXAGON	EA 8
1	100	XDFZZ		MS35233-18	96906	SCREW, MACHINE	EA 2
1	101	XDFZZ		A62080006	96238	GRILLE, FABRIC	EA 1
1	102	PAFZZ	5325-00-081-7748	SMB552121	80063	STUD ASSEMBLY, TURNLOCK	EA 2
1	103	PAFZZ	5305-00-253-5615	MS21318-21	96906	SCREW, MACHINE	EA 2
1	104	XDFZZ		D80030041	96238	BOARD, TERMINAL	EA 1
1	105	PAFZZ	5905-00-060-3731	RW69V1R0	81349	RESISTOR, FIXED, WIREWOUND	EA 2
1	106	PAFZZ	5961-00-577-6214	1N538M	81349	SEMICONDUCTOR DEVICE, DIODE	EA 5
1	107	PAFZZ	5905-00-042-9745	RW67V330	91349	RESISTOR, FIXED, COMPOSITION	EA 1
1	108	PAFZZ	5905-00-279-2553	RC32GF122J	81349	RESISTOR, FIXED, COMPOSITION	EA 1
1	109	PAFZZ	5905-00-279-1979	RC42GF101J	881349	RESISTOR, FIXED, COMPOSITION	EA 1
1	110	PAFZZ	5905-00-279-1962	RC42GF132J	81349	RESISTOR, FIXED, COMPOSITION	EA 1
1	111	PAFZZ	5905-00-973-9213	RW67V5R1	91349	RESISTOR, FIXED, WIREWOUND	EA 1
1	112	PAHZZ	5910-00-913-0226	CH05A1M105K	81349	CAPACITOR, FIXED, PLASTIC	EA 1
1	113	PAHZZ	5910-00-925-1747	CH05A1MC474K	81349	CAPACITOR, FIXED, PLASTIC	EA 2
1	114	PAFZZ	5910-00-899-8806	CP05A1KE154K3	81349	CAPACITOR, FIXED, PAPER	EA 1
1	115	PAFZZ	5910-00-542-7491	CH05A1MC104K	81349	CAPACITOR, FIXED, PLASTIC	EA 2
1	116	PAHZZ	5910-00-934-2924	CS13AG180K	81349	CAPACITOR, FIXED, ELECTROLYTIC	EA 2
1	117	PAHZZ	5910-00-926-8217	CS13AF470K	81349	CAPACITOR, FIXED, ELECTROLYTIC	EA 1
1	118	PAFZZ	5905-00-106-9354	RCR32G302J8	81349	RESISTOR, FIXED, COMPOSITION	EA 1
1	119	PAFZZ	5905-00-982-3335	RW69V301	81349	RESISTOR, FIXED, WIREWOUND	EA 1

(1)	(2)	(3)	(4)	(5)	(6)	(7)	(8)
ILLUSTRATION							QTY
(a)	(b)		NATIONAL				INC
FIG	ITEM	SMR	STOCK	PART			IN
NO.	NO.	CODE	NUMBER	NUMBER	FSCM	USABLE ON CODE	U\M UNIT
1	120	PAFZZ	5905-00-682-4109	RC07GF561J	81349		EA 1



ELIKC008

Figure 2. Send Card 1A1 (Sheet 1 of 2).

REF. DES.	ITEM NO.	REF. DES.	ITEM NO.	REF. DES.	ITEM NO.	REF. DES.	ITEM NO.
C1	1	L1	9	R13	20	R33	35
C2	1	Q1	10	R14	20	TP1	36
C3	2	Q2	10	R15	21	TP2	36
C4	2	Q3	11	R16	21	TP3	36
C5	3	Q4	12	R17	22	TP4	36
C6	4	Q5	12	R18	23		
C7	4	Q6	12	R19	24		
C8	5	Q7	12	R20	25		
C9	3	R1	13	R21	19		
C10	4	R2	14	R22	23		
C11	4	R3	15	R23	26		
C12	4	R4	16	R24	27		
C13	3	R5	17	R25	28		
C14	4	R6	14	R26	29		
C15	5	R7	16	R27	29		
C16	6	R8	15	R28	30		
C17	5	R9	18	R29	31		
C18	7	R10	19	R30	32		
CR1	8	R11	17	R31	33		
CR2	8	R12	15	R32	34		

E1 IKCO09

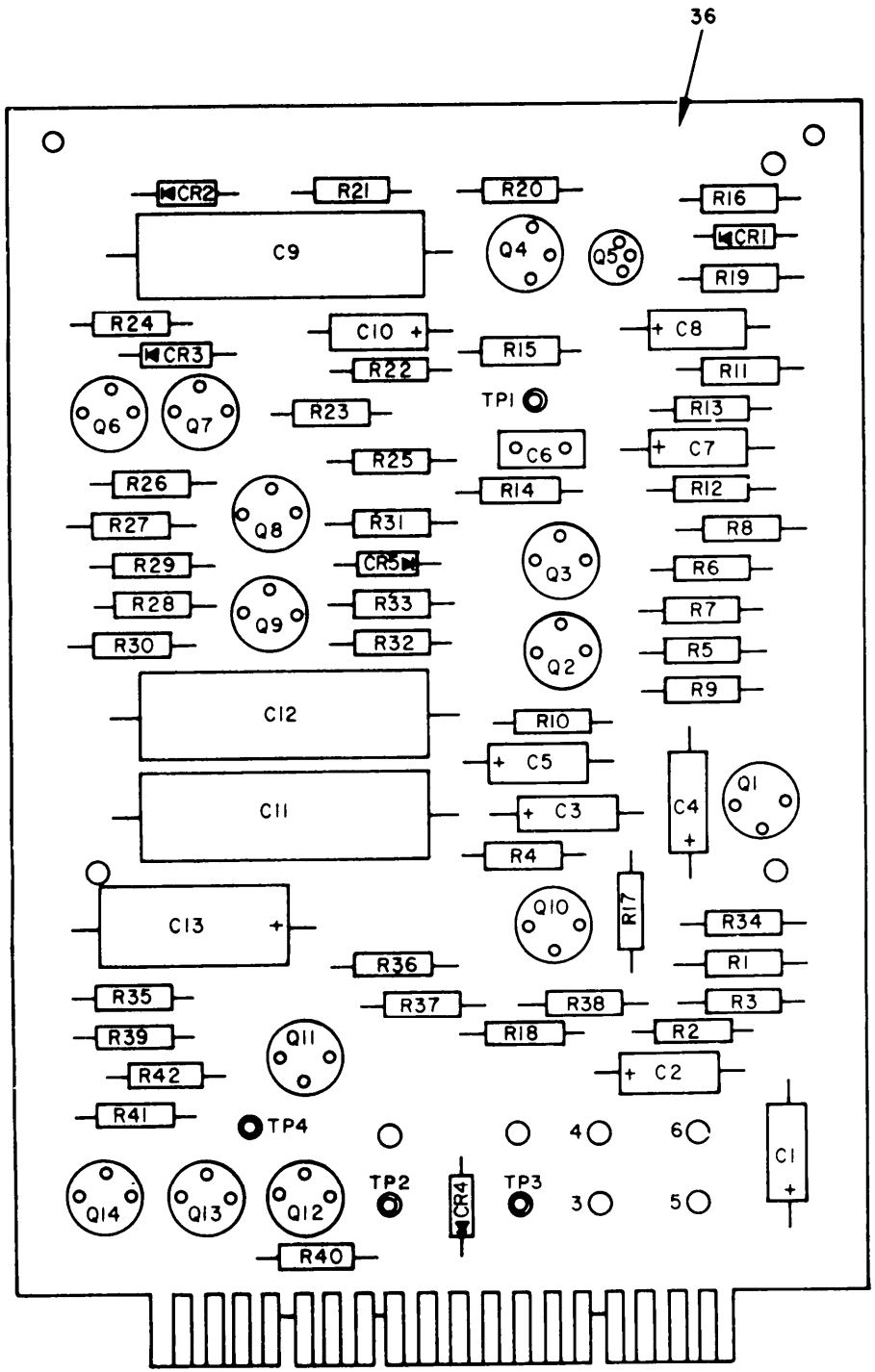
Figure 2. Send Card 1A1 (Sheet 2 of 2).

SECTION II

TM11-5805-356-34P-1

(1)	(2)	(3)	(4)	(5)	(6)	(7)	(8)
ILLUSTRATION							QTY
(a)	(b)	NATIONAL			DESCRIPTION		INC
FIG	ITEM	SMR	STOCK	PART			IN
NO.	NO.	CODE	NUMBER	NUMBER	FSCM	USABLE ON CODE	U\M
							UNIT
GROUP 0201 SEND CARD 1A1							
2	1	PAHZZ	5910-00-892-7312	CP05A1KB154K3	81349		EA 2
2	2	PAHZZ	5910-00-823-1140	CP05A1KC683K3	81349		EA 2
2	3	PAHZZ	5910-00-945-6333	A42020002	96238		EA 3
2	4	PAHZZ	5910-00-946-0183	C42000031	96238		EA 3
2	4	PAHZZ	5910-00-765-6226	CM15FD161G03	81349		EA 6
2	4	PAHZZ	5910-00-772-1820	CM15FD181G03	81349		EA 6
2	4	PAHZZ	5910-00-725-1993	CM15FD201G03	81349		EA 6
2	4	PAHZZ	5910-00-725-1994	CM15FD221G03	81349		EA 6
2	4	PAHZZ	5910-00-760-7919	CM15FD241G03	81349		EA 6
2	4	PAHZZ	5910-00-899-2538	CM15FD271G03	81349		EA 6
2	4	PAHZZ	5910-00-728-2810	CM15FD301G03	81349		EA 6
2	4	PAHZZ	5910-00-067-8681	CM15FD331G03	81349		EA 6
2	4	PAHZZ	5910-00-765-6225	CM15FD361G03	81349		EA 6
2	4	PAHZZ	5910-00-724-6078	CM15FD391G03	81349		EA 6
2	4	PAHZZ	5910-00-728-1577	CM15FD431G03	81349		EA 6
2	4	PAHZZ	5910-00-762-2945	CM15FD471G03	81349		EA 6
2	4	PAHZZ	5910-00-060-9619	CM15FD511G03	81349		EA 6
2	4	XDHZZ		CM20FD561GN3	81349		EA 6
2	4	PAHZZ	5910-00-727-2550	CM20FD621GN3	81349		EA 6
2	4	PAHZZ	5910-00-725-4795	CM20FF102GN3	81349		EA 6
2	4	PAHZZ	5910-00-901-8949	CM15ED300G03	81349		EA 6
2	4	PAHZZ	5910-00-892-9904	CM20CH390JN3	81349		EA 6
2	4	PAHZZ	5910-00-850-0541	CM15ED470JN3	81349		EA 6
2	4	PAHZZ	5910-00-901-8796	CM15FD560G03	81349		EA 6
2	4	XDHZZ		CM20EF680JN3	81349		EA 6
2	4	PAHZZ	5910-00-832-5722	CM20FF750JN3	81349		EA 6
2	4	PAHZZ	5910-00-932-2738	CM20FF820JN3	81349		EA 6
2	4	PAHZZ	5910-00-772-1217	CM15F0910G03	81349		EA 6
2	4	PAHZZ	5910-00-717-0169	CM15FD101G03	81349		EA 6
2	4	PAHZZ	5910-00-766-8788	CM15FD111G03	81349		EA 6
2	4	PAHZZ	5910-00-725-1992	CM15D121G03	81349		EA 6
2	4	PAHZZ	5910-00-765-6316	CM30FD122GN3	81349		EA 6
2	4	PAHZZ	5910-00-727-4005	CM30FD152GN3	81349		EA 6
2	4	PAHZZ	5910-00-925-3615	CM20FD821GP3	81349		EA 6
2	4	PAHZZ	5910-00-951-7075	CM35FD512GN3	81349		EA 6
2	4	PAHZZ	5910-00-774-7591	CM35FD562GN3	81349		EA 6
2	5	PAHZZ	5910-00-934-2865	CS13AE150K	81349		EA 3
2	6	PAHZZ	5910-00-819-5745	CP05A1KC473K3	81349		EA 1
2	7	XDHZZ		CS13AE330K	81349		EA 1

(1) ILLUSTRATION (a) FIG NO.	(2) (b) ITEM NO.	(3) SMR CODE	(4) NATIONAL STOCK NUMBER	(5) PART NUMBER	(6) FSCM	(7) DESCRIPTION USABLE ON CODE	(8) QTY INC IN UNIT
2	8	PAHZZ	5961-00-087-6047	1N645	91350	SEMICONDUCTOR DEVICE, DIODE	EA 2
2	9	PAHZZ	5950-00-945-6484	4301003	96238	COIL, AUTOMATIC FREQUENCY	EA 1
2	10	PAHZZ	5961-00-837-7262	2N697	81350	TRANSISTOR	EA 2
2	11	PAHZZ	5961-00-842-6937	2N706M	81350	TRANSISTOR	EA 1
2	12	PAHZZ	5961-00-752-5229	2N404	81349	TRANSISTOR	EA 4
2	13	PAHZZ	5905-00-681-6462	RC07GF102J	81349	RESISTOR, FIXED, COMPOSITION	EA 1
2	14	PAHZZ	5905-00-686-3368	RC07GF203J	81349	RESISTOR, FIXED, COMPOSITION	EA 2
2	15	PAHZZ	5905-00-683-7721	RC07GF101J	81349	RESISTOR, FIXED, COMPOSITION	EA 3
2	16	PAHZZ	5905-00-683-7726	RC07GF363J	81349	RESISTOR, FIXED, COMPOSITION	EA 2
2	17	PAHZZ	5905-00-686-3903	RC07GF333J	81349	RESISTOR, FIXED, COMPOSITION	EA 2
2	18	PAHZZ	5905-00-617-2730	RV5LAYSBI02A	81349	RESISTOR, VARIABLE	EA 1
2	19	PAHZZ	5905-00-683-7723	RC07GF152J	81349	RESISTOR, FIXED, COMPOSITION	EA 2
2	20	PAHZZ	5905-00-800-3955	RC07GF335J	81349	RESISTOR, FIXED, COMPOSITION	EA 2
2	21	PAHZZ	5905-00-686-9998	RC07GF472J	81349	RESISTOR, FIXED, COMPOSITION	EA 2
2	22	PAHZZ	5905-00-687-0002	RC07GF223J	81349	RESISTOR, FIXED, COMPOSITION	EA 1
2	23	PAHZZ	5905-00-686-3129	RC07GF104J	81349	RESISTOR, FIXED, COMPOSITION	EA 2
2	24	PAHZZ	5905-00-726-4413	RC07GF123J	81349	RESISTOR, FIXED, COMPOSITION	EA 1
2	25	PAHZZ	5905-00-682-4109	RC07GF561J	81349	RESISTOR, FIXED, COMPOSITION	EA 1
2	26	PAHZZ	5905-00-691-0195	RC07GF562J	81349	RESISTOR, FIXED, COMPOSITION	EA 1
2	27	PAHZZ	5905-00-686-3122	RC07GF301J	81349	RESISTOR, FIXED, COMPOSITION	EA 1
2	28	PAHZZ	5905-00-115-8055	RC07GF393J	81349	RESISTOR, FIXED, COMPOSITION	EA 1
2	29	PAHZZ	5905-00-683-2238	RC07GF103J	81349	RESISTOR, FIXED, COMPOSITION	EA 2
2	30	PAHZZ	5905-00-723-5251	RC07GF222J	81349	RESISTOR, FIXED, COMPOSITION	EA 1
2	31	PAHZZ	5905-00-279-3513	RC20GF221J	81349	RESISTOR, FIXED, COMPOSITION	EA 1
2	32	PAHZZ	5905-00-279-2629	RC32GF621J	81349	RESISTOR, FIXED, COMPOSITION	EA 1
2	33	PAHZZ	5905-00-683-7720	RC07GF510J	81349	RESISTOR, FIXED, COMPOSITION	EA 1
2	34	PAHZZ	5905-00-683-2233	RC07GF910J	81349	RESISTOR, FIXED, COMPOSITION	EA 1
2	35	PAHZZ	5905-00-683-2243	RC07GF151J	81349	RESISTOR, FIXED, COMPOSITION	EA 1
2	36	PAHZZ	5935-00-767-8187	31-1	81073	JACK, TIP	EA 4
2	37	XDHZZ		MS35233-28	81349	SCREW, MACHINE	EA 1
2	38	XAHZZ		C80030031	96238	BOARD, PRINTED CIRCUIT	EA 1



ELIKCOIO

Figure 3. Break-In Detector Card 1A2 (Sheet 1 of 2).

REF. DES.	ITEM NO.	REF. DES.	ITEM NO.	REF. DES.	ITEM NO.	REF. DES.	ITEM NO.
C1	1	Q3	8	R9	18	R29	30
C2	1	Q4	8	R10	19	R30	31
C3	1	Q5	9	R11	20	R31	30
C4	1	Q6	8	R12	21	R32	30
C5	1	Q7	8	R13	22	R33	32
C6	2	Q8	8	R14	23	R34	25
C7	1	Q9	8	R15	19	R35	33
C8	1	Q10	8	R16	24	R36	20
C9	3	Q11	10	R17	22	R37	15
C10	4	Q12	10	R18	25	R38	15
C11	3	Q13	10	R19	26	R39	19
C12	3	Q14	11	R20	22	R40	30
C13	5	R1	12	R21	27	R41	29
CR1	6	R2	13	R22	12	R42	34
CR2	6	R3	14	R23	28	TP1	35
CR3	7	R4	15	R24	29	TP2	35
CR4	7	R5	16	R25	30	TP3	35
CR5	7	R6	17	R26	30	TP4	35
Q1	8	R7	16	R27	31		
Q2	8	R8	17	R28	30		

ELIKCO11

Figure 3. Break-In Detector Card 1A2 (Sheet 2 of 2).

(1) ILLUSTRATION (a) FIG NO.	(2) (b) ITEM NO.	(3) SMR CODE	(4) NATIONAL STOCK NUMBER	(5) PART NUMBER	(6) FSCM	(7) DESCRIPTION	(8) QTY INC IN UNIT
GROUP 0202 BREAKER-IN DETECTOR CARD 1A2							
3	1	PAHZZ	5910-00-934-2865	CS13AE150K	81349	CAPACITOR, FIXED, ELECTROLYTIC	EA 7
3	2	PAHZZ	5910-00-702-5735	CM05C101K03	81349	CAPACITOR, FIXED, MICA	EA 1
3	3	PAHZZ	5910-00-814-0753	CP05A1KB274K3	81349	CAPACITOR, FIXED, PAPER	EA 3
3	4	XDHZZ		CS13AC330K	81349	CAPACITOR, FIXED, ELECTROLYTIC	EA 1
3	5	XDHZZ		CS13AE330K	81349	CAPACITOR, FIXED, ELECTROLYTIC	EA 1
3	6	PAHZZ	5961-00-669-6884	1N277	81350	SEMICONDUCTOR DEVICE, DIODE	EA 2
3	7	PAHZZ	5961-00-087-6047	1N645	81350	SEMICONDUCTOR DEVICE, DIODE	EA 3
3	8	PAHZZ	5961-00-752-5229	2N404	81349	TRANSISTOR	EA 9
3	9	PAHZZ	5961-00-842-6937	2N706M	81350	TRANSISTOR	EA 1
3	10	PAHZZ	5961-00-837-7262	2N697	81350	TRANSISTOR	EA 3
3	11	PAHZZ	5961-00-892-3473	2N526	81349	TRANSISTOR	EA 1
3	12	PAHZZ	5905-00-682-4103	RC07GF513J	81349	RESISTOR, FIXED, COMPOSITION	EA 2
3	13	PAHZZ	5905-00-686-3129	RC07GF104J	81349	RESISTOR, FIXED, COMPOSITION	EA 1
3	14	PAHZZ	5905-00-681-8818	RC07GF153J	81349	RESISTOR, FIXED, COMPOSITION	EA 1
3	15	PAHZZ	5905-00-681-6462	RC07GF102J	81349	RESISTOR, FIXED, COMPOSITION	EA 3
3	16	PAHZZ	5905-00-687-0000	RC07GF183J	81349	RESISTOR, FIXED, COMPOSITION	EA 2
3	17	PAHZZ	5905-00-687-0002	RC07GF223J	81349	RESISTOR, FIXED, COMPOSITION	EA 2
3	18	PAHZZ	5905-00-106-9357	RC07GF750J	81349	RESISTOR, FIXED, COMPOSITION	EA 1
3	19	PAHZZ	5905-00-682-4097	RC07GF302J	81349	RESISTOR, FIXED, COMPOSITION	EA 3
3	20	PAHZZ	5905-00-683-2238	RC07GF103J	81349	RESISTOR, FIXED, COMPOSITION	EA 2
3	21	PAHZZ	5905-00-683-7721	RC07GF101J	81349	RESISTOR, FIXED, COMPOSITION	EA 1
3	22	PAHZZ	5905-00-110-7622	RC07GF682J	81349	RESISTOR, FIXED, COMPOSITION	EA 3
3	23	PAHZZ	5905-00-801-6998	RC07GF621J	81349	RESISTOR, FIXED, COMPOSITION	EA 1
3	24	PAHZZ	5905-00-800-3478	RC07GF753J	81349	RESISTOR, FIXED, COMPOSITION	EA 1
3	25	PAHZZ	5905-00-683-2241	RC07GF512J	81349	RESISTOR, FIXED, COMPOSITION	EA 2
3	26	PAHZZ	5905-00-686-9996	RC07GF821J	81349	RESISTOR, FIXED, COMPOSITION	EA 1
3	27	PAHZZ	5905-00-683-2246	RC07GF473J	81349	RESISTOR, FIXED, COMPOSITION	EA 1
3	28	PAHZZ	5905-00-688-3738	RC07GF182J	81349	RESISTOR, FIXED, COMPOSITION	EA 1
3	29	PAHZZ	5905-00-686-3368	RC07GF203J	81349	RESISTOR, FIXED, COMPOSITION	EA 2
3	30	PAHZZ	5905-00-683-7726	RC07GF363J	81349	RESISTOR, FIXED, COMPOSITION	EA 7
3	31	PAHZZ	5905-00-691-0195	RC07GF562J	81349	RESISTOR, FIXED, COMPOSITION	EA 2
3	32	PAHZZ	5905-00-683-2236	RC07GF391J	81349	RESISTOR, FIXED, COMPOSITION	EA 1
3	33	PAHZZ	5905-00-681-9970	RC07GF822J	81349	RESISTOR, FIXED, COMPOSITION	EA 1
3	34	PAHZZ	5905-00-686-9995	RC07GF154J	81349	RESISTOR, FIXED, COMPOSITION	EA 1
3	35	PAHZZ	5935-00-767-8187	31-1	81073	JACK, TIP	EA 4
3	36	XAHZZ		C80030011	96238	BOARD, PRINTED CIRCUIT	EA 1

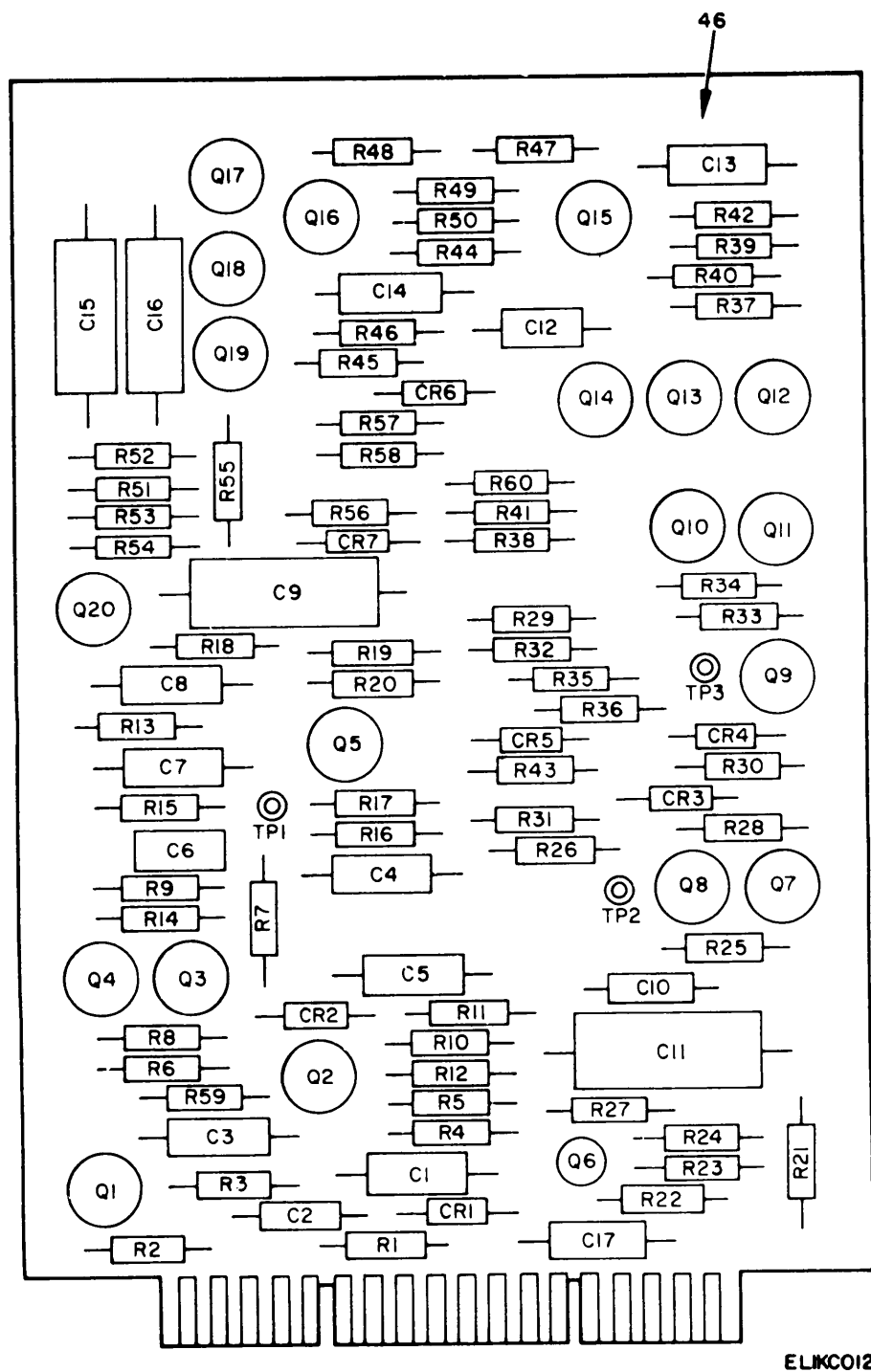


Figure 4. Receive Card 1A3 (Sheet 1 of 2).

REF. DES.	ITEM NO.	REF. DES.	ITEM NO.	REF. DES.	ITEM NO.	REF. DES.	ITEM NO.	REF. DES.	ITEM NO.	REF. DES.	ITEM NO.
C1	1	CR4	9	Q17	10	R17	26	R37	38	R57	28
C2	2	CR5	8	Q18	10	R18	27	R38	39	R58	28
C3	1	CR6	9	Q19	10	R19	28	R39	22	R59	21
C4	1	CR7	9	Q20	14	R20	29	R40	40	R60	16
C5	1	Q1	10	R1	15	R21	30	R41	41	TP1	45
C6	3	Q2	10	R2	15	R22	31	R42	26	TP2	45
C7	1	Q3	10	R3	16	R23	27	R43	42	TP3	45
C8	1	Q4	10	R4	17	R24	32	R44	43		
C9	4	Q5	11	R5	18	R25	27	R45	20		
C10	5	Q6	12	R6	19	R26	33	R46	44		
C11	6	Q7	10	R7	20	R27	34	R47	40		
C12	2	Q8	10	R8	19	R28	32	R48	24		
C13	1	Q9	10	R9	20	R29	35	R49	26		
C14	1	Q10	10	R10	21	R30	36	R50	18		
C15	7	Q11	13	R11	22	R31	37	R51	27		
C16	7	Q12	14	R12	23	R32	35	R52	16		
C17	1	Q13	10	R13	24	R33	22	R53	16		
CR1	8	Q14	10	R14	21	R34	32	R54	22		
CR2	9	Q15	14	R15	17	R35	38	R55	27		
CR3	8	Q16	10	R16	25	R36	22	R56	18		

Figure 4. Receive Card 1A3 (Sheet 2 of 2).

ELIKC013

(1) ILLUSTRATION (a) FIG NO.	(2) (b) ITEM NO.	(3) SMR CODE	(4) NATIONAL STOCK NUMBER	(5) PART NUMBER	(6) FSCM	DESCRIPTION	(7) USABLE ON CODE	(8) QTY INC IN UNIT
GROUP 0203 RECEIVE CARD 1A3								
4	1	PAHZZ	5910-00-934-2865	CS13AE150K	81349	CAPACITOR, FIXED, ELECTROLYTIC	EA	9
4	2	PAHZZ	5910-00-087-8985	CS13AFR33K	81349	CAPACITOR, FIXED, ELECTROLYTIC	EA	2
4	3	PAHZZ	5910-00-088-1624	CM05FD221GP3	81349	CAPACITOR, FIXED, ELECTROLYTIC	EA	1
4	4	PAHZZ	5910-00-819-5745	CP05A1KC473K3	81349	CAPACITOR, FIXED, PAPER	EA	1
4	5	PAHZZ	5910-00-936-3930	CS13AFR47K	81349	CAPACITOR, FIXED, ELECTROLYTIC	EA	1
4	6	PAHZZ	5910-00-688-2822	CP05A1KB104K	81349	CAPACITOR, FIXED, PAPER	EA	1
4	7	PAHZZ	5910-00-836-0715	CP05A1KF222K3	81349	CAPACITOR, FIXED, PAPER	EA	2
4	8	PAHZZ	5961-00-087-6047	1N645	81350	SEMICONDUCTOR DEVICE, DIODE	EA	3
4	9	PAHZZ	5961-00-669-6884	1N277	81350	SEMICONDUCTOR DEVICE, DIODE	EA	4
4	10	PAHZZ	5961-00-752-5229	2N404	81349	TRANSISTOR	EA	14
4	11	PAHZZ	5961-00-729-1059	2N398	80064	TRANSISTOR	EA	1
4	12	PAHZZ	5961-00-842-6937	2N706M	81350	TRANSISTOR	EA	1
4	13	PAHZZ	5961-00-853-6093	ST201	96238	TRANSISTOR	EA	1
4	14	PAHZZ	5961-00-837-7262	2N697	81350	TRANSISTOR	EA	3
4	15	PAHZZ	5905-00-682-4103	RC07GF513J	81349	RESISTOR, FIXED, COMPOSITION	EA	2
4	16	PAHZZ	5905-00-686-3129	RC07GF104J	81349	RESISTOR, FIXED, COMPOSITION	EA	4
4	17	PAHZZ	5905-00-681-8818	RC07GF153J	81349	RESISTOR, FIXED, COMPOSITION	EA	2
4	18	PAHZZ	5905-00-110-0196	RC20GF102J	81349	RESISTOR, FIXED, COMPOSITION	EA	3
4	19	PAHZZ	5905-00-687-0000	RC07GF183J	81349	RESISTOR, FIXED, COMPOSITION	EA	2
4	20	PAHZZ	5905-00-687-0002	RC07GF223J	81349	RESISTOR, FIXED, COMPOSITION	EA	3
4	21	PAHZZ	5905-00-683-7721	RC07GF101J	81349	RESISTOR, FIXED, COMPOSITION	EA	3
4	22	PAHZZ	5905-00-681-6462	RC07GF102J	81349	RESISTOR, FIXED, COMPOSITION	EA	5
4	23	PAHZZ	5905-00-682-4109	RC07GF561J	81349	RESISTOR, FIXED, COMPOSITION	EA	1
4	24	PAHZZ	5905-00-721-0597	RC07GF243J	81349	RESISTOR, FIXED, COMPOSITION	EA	2
4	25	PAHZZ	5905-00-683-2240	RC07GF221J	81349	RESISTOR, FIXED, COMPOSITION	EA	1
4	26	PAHZZ	5905-00-682-4097	RC07GF302J	81349	RESISTOR, FIXED, COMPOSITION	EA	3
4	27	PAHZZ	5905-00-683-2238	RC07GF103J	81349	RESISTOR, FIXED, COMPOSITION	EA	5
4	28	PAHZZ	5905-00-686-3368	RC07GF203J	81349	RESISTOR, FIXED, COMPOSITION	EA	3
4	29	PAHZZ	5905-00-279-1890	RC20GF391J	81349	RESISTOR, FIXED, COMPOSITION	EA	1
4	30	PAHZZ	5905-00-726-4413	RC07GF123J	81349	RESISTOR, FIXED, COMPOSITION	EA	1
4	31	PAHZZ	5905-00-110-7622	RC07GF682J	81349	RESISTOR, FIXED, COMPOSITION	EA	1
4	32	PAHZZ	5905-00-686-3370	RC07GF202J	81349	RESISTOR, FIXED, COMPOSITION	EA	3
4	33	PAHZZ	5905-00-683-2243	RC07GF151J	81349	RESISTOR, FIXED, COMPOSITION	EA	1
4	34	PAHZZ	5905-00-686-9994	RC07GF122J	81349	RESISTOR, FIXED, COMPOSITION	EA	1
4	35	PAHZZ	5905-00-686-3119	RC07GF132J	81349	RESISTOR, FIXED, COMPOSITION	EA	2
4	36	PAHZZ	5905-00-686-3838	RC07GF273J	81349	RESISTOR, FIXED, COMPOSITION	EA	1
4	37	PAHZZ	5905-00-752-3186	RC07GF163J	81349	RESISTOR, FIXED, COMPOSITION	EA	1
4	38	PAHZZ	5905-00-702-4439	RC07GF133J	81349	RESISTOR, FIXED, COMPOSITION	EA	2

(1)	(2)	(3)	(4)	(5)	(6)	(7)	(8)	
ILLUSTRATION							QTY	
(a)	(b)		NATIONAL		DESCRIPTION		INC	
FIG	ITEM	SMR	STOCK	PART			IN	
NO.	NO.	CODE	NUMBER	NUMBER	FSCM	USABLE ON CODE	U\M	UNIT
4	39	PAHZZ	5905-00-682-4101	RC07GF752J	81349	RESISTOR, FIXED, COMPOSITION	EA	1
4	40	PAHZZ	5905-00-683-2241	RC07GF512J	81349	RESISTOR, FIXED, COMPOSITION	EA	2
4	41	PAHZZ	5905-00-686-9998	RC07GF472J	81349	RESISTOR, FIXED, COMPOSITION	EA	1
4	42	PAHZZ	5905-00-115-8055	RC07GF393J	81349	RESISTOR, FIXED, COMPOSITION	EA	1
4	43	PAHZZ	5905-00-803-2908	RC07GF303J	81349	RESISTOR, FIXED, COMPOSITION	EA	1
4	44	PAHZZ	5905-00-683-2246	RC07GF473J	81349	RESISTOR, FIXED, COMPOSITION	EA	1
4	45	PAHZZ	5935-00-767-8187	31-1	81073	JACK, TIP	EA	3
4	46	XAHZZ		D80030021	96238	BOARD, PRINTED CIRCUIT	EA	1

NATIONAL STOCK NUMBER AND PART NUMBER INDEX

NOTE: LATEST NATION STOCK NUMBER ASSIGNMENTS ARE INCLUDED AT END OF INDEX

STOCK NUMBER	FIGURE NO.	ITEM NO.	STOCK NUMBER	FIGURE NO.	ITEM NO.
5905-00-042-9745	1	107	5905-00-683-7721	4	21
5310-00-043-1754	1	97	5905-00-683-7723	2	19
			5905-00-683-7726	2	16
			5905-00-683-7726	3	30
5305-00-059-3658	1	59	5905-00-686-3119	4	35
5905-00-060-3731	1	105	5905-00-686-3122	2	27
5910-00-060-9619	2	4	5905-00-686-3129	2	23
5910-00-067-8681	2	4	5905-00-686-3129	3	13
5325-00-081-7748	1	102	5905-00-686-3129	4	16
5961-00-087-6047	1	7			
5961-00-087-6047	2	8			
5961-00-087-6047	3	7	5905-00-686-3368	2	14
5961-00-087-6047	4	8	5905-00-686-3368	3	29
5910-00-087-8985	4	2	5905-00-686-3368	4	28
5910-00-088-1624	4	3	5905-00-686-3370	4	32
6240-00-143-3060	1	72	5905-00-686-3838	4	36
6240-00-155-7836	1	45	5905-00-686-3903	2	17
5940-00-156-7344	1	32	5905-00-686-9994	4	34
5935-00-192-4789	1	64	5905-00-686-9995	3	34
5905-00-195-6806	4	18	5905-00-686-9996	3	26
5940-00-247-8217	1	35	5905-00-686-9998	2	21
5305-00-253-5615	1	103	5905-00-686-9998	4	41
5905-00-257-0937	1	24	5905-00-687-0000	3	16
5940-00-258-2120	1	56	5905-00-687-0000	4	19
5905-00-279-1890	4	29	5905-00-687-0002	2	22
5905-00-279-1962	1	110	5905-00-687-0002	3	17
5905-00-279-1979	1	109	5905-00-687-0002	4	20
5905-00-279-2553	1	108	5910-00-688-2822	4	6
5905-00-279-2629	2	32	5905-00-688-3738	3	28
5905-00-279-3513	2	31	5905-00-691-0195	2	26
5920-00-280-5031	1	1	5905-00-691-0195	3	31
5310-00-285-7085	1	99	5905-00-702-4439	4	38
5920-00-474-6125	1	4	5910-00-702-5735	3	2
5305-00-515-7219	1	41	5940-00-710-1671	1	27
5930-00-526-0587	1	62	5910-00-717-0169	2	4
5910-00-542-7491	1	115	5905-00-721-0597	4	24
			5905-00-723-5251	2	30
5355-00-556-0145	1	96	5910-00-724-6078	2	4
5905-00-577-3717	1	21	5910-00-725-1992	2	4
5961-00-577-6214	1	106	5910-00-725-1993	2	4
5935-00-578-3847	1	69	5910-00-725-1994	2	4
5930-00-615-7880	1	43	5905-00-725-6995	1	47
5905-00-617-2730	2	18	5905-00-726-4413	2	24
5310-00-619-1148	1	85	5905-00-726-4413	4	30
5905-00-643-9817	1	26	5910-00-727-4005	2	4
5930-00-655-1507	1	55	5910-00-728-1577	2	4
5935-00-655-4370	1	93	5910-00-728-2810	2	4
5961-00-669-6884	1	10	5961-00-729-1059	4	11
5961-00-669-6884	3	6	5310-00-734-5661	1	36
5961-00-669-6884	4	9	5905-00-752-3186	4	37
5905-00-681-6462	2	13	5961-00-752-5229	2	12
5905-00-681-6462	3	15	5961-00-752-5229	3	8
5905-00-681-6462	4	22	5961-00-752-5229	4	10
5905-00-681-8818	3	14	5910-00-760-7919	2	4
5905-00-681-8818	4	17	5910-00-762-2945	2	4
5905-00-681-9970	3	33	5910-00-765-6225	2	4
5905-00-682-4097	3	19	5910-00-765-6226	2	4
5905-00-682-4097	4	26	5910-00-765-6316	2	4
5905-00-682-4101	4	39	5910-00-766-8788	2	4
5905-00-682-4103	3	12	5935-00-767-8187	2	36
5905-00-682-4103	4	15	5935-00-767-8187	3	35
5905-00-682-4109	1	120	5935-00-767-8187	4	45
5905-00-682-4109	2	25	5910-00-772-1217	2	4
5905-00-682-4109	4	23	5910-00-772-1820	2	4
5905-00-683-2233	2	34	5910-00-774-7591	2	4
5905-00-683-2236	3	32	5905-00-800-3478	3	24
5905-00-683-2238	2	29	5905-00-800-3955	2	20
5905-00-683-2238	3	20			
5905-00-683-2238	4	27	5905-00-801-6998	3	23
5905-00-683-2240	1	42	5905-00-803-2908	4	43
5905-00-683-2240	4	25	6210-00-806-8845	1	57
5905-00-683-2241	3	25	5910-00-814-0753	3	3
5905-00-683-2241	4	40	5910-00-819-5745	2	6
5905-00-683-2243	2	35	5910-00-819-5745	4	4
5905-00-683-2243	4	33	5910-00-823-1140	2	2
5905-00-683-2246	3	27	5995-00-832-5164	1	94
5905-00-683-2246	4	44	5910-00-832-5722	2	4
5905-00-683-7720	2	33	5910-00-836-0715	4	7
5905-00-683-7721	2	15	5961-00-837-7262	2	10
5905-00-683-7721	6	21	5961-00-842-6937	2	11

NATIONAL STOCK NUMBER AND PART NUMBER INDEX

STOCK NUMBER	FIGURE NO.	ITEM NO.	STOCK NUMBER	FIGURE NO.	ITEM NO.
5961-00-842-6937	3	9	5950-00-945-6484	2	9
5961-00-842-6937	4	12	5950-00-945-7458	1	75
6210-00-843-5609	1	44			
5961-00-853-6093	4	13	5910-00-946-0183	2	4
5970-00-869-6263	1	83			
5965-00-871-8987	1	19	5930-00-947-3019	1	65
5961-00-892-0620	1	34	5930-00-947-3023	1	80
5910-00-892-7312	2	1	5930-00-947-3024	1	81
5910-00-892-9904	2	4	5930-00-947-3327	1	60
5910-00-899-2538	2	4	5805-00-947-3396	1	71
5910-00-899-8806	1		6250-00-947-7035	1	89
5910-00-901-8796	2	4	5355-00-948-5452	1	61
5910-00-901-8949	2	4	5355-00-948-5455	1	39
5910-00-925-3615	2	4	5910-00-951-7075	2	4
5975-00-926-3073	1	68	5910-00-954-2898	1	8
5950-00-930-1300	1	74	5905-00-957-8616	1	9
5310-00-930-5289	1	88	5905-00-973-9213	1	111
5930-00-930-5340	1	58	5905-00-982-3335	1	119
5930-00-930-5341	1	40	5950-00-996-1932	1	78
5910-00-932-2738	2	4			
5330-00-933-8208	1	67	5805-00-999-5029	1	53
5805-00-936-5419	1	38			
			5805-00-999-5032	1	6
5910-00-945-6333	2	3	5915-00-999-8711	1	79

PART NUMBER	FSCM	FIG. NO.	ITEM NO.	PART NUMBER	FSCM	FIG. NO.	ITEM NO.
A42020002	96238	2	3	CM15F0910G03	81349	2	4
A43000043	96238	2	3	CM30CH390JN3	81349	2	4
A43001003	96238	1		CM20EF680JN3	81349	2	4
A43001004	96238	1	74	CM20FD561GN3	91349	2	4
A43006000	96238	1	75	CM20FD621GN3	81349	2	4
A43020002	96238	1	79	CM20FD821GP3	81349	2	4
A46020031	96238	1	80	CM20FF102GN3	81349	2	4
A46020032	96238	1	65	CM20FF750JN3	81349	2	4
A46020033	96238	1	81	CM20FF820JN3	81349	2	4
A46020034	96238	1	58	CM30FD122GN3	81349	2	4
A46020035	96238	1	40	CM30FD152GN3	81349	2	4
A46020047	96238	1	50	CM35FD512GN3	81349	2	4
A48092000	96238	1	71	CM35FD562GN3	81349	2	4
A50000009	96238	1	38	CP05A1KB104K	81349	4	6
A53000001-1	96238	1	66	CP05A1KB154K3	81349	2	1
A53000001-2	96238	1	67	CP05A1KB274K3	81349	3	3
A57030035	96238	1		CP05A1KC473K3	81349	2	6
A62080006	96238	1	107	CP05A1KC473K3	81349	4	4
B12016	96238	1	39	CP05A1KC683K3	81349	2	2
B48000004	96238	1	20	CP05A1KE154K3	81349	1	114
B50400001-1	96238	1	51	CP05A1KF222K3	81349	4	7
B62030010	96238	1	98	CS13AC330K	81349	3	4
B74000001-2	96238	1	94	CS13AE150K	81349	2	5
B90030008	96238	1	50	CS18AE150K	81349	3	1
				CS13AE150K	81349	4	1
CE41C221G	81349	1	22	CS13AE330K	81349	2	7
CH05A1MC104K	81349	1	115	CS13AE330K	81349	3	5
CH05A1MC474K	81349	1	113	CS13AFR33K	81349	4	2
CH05A1M105K	81349	1	112	CS13AFR47K	81349	4	5
CH10A1NV405K	81349	1	8	CS13AF470K	81349	1	117
CM05C101K03	81349	3	2	CS13AG180K	81349	1	116
CM05FD221GP3	81349	4	3	CZ24BEE104	81349	1	70
CM15ED300G03	81349	2	4	C42000031	96238	2	4
CM15ED470JN3	81349	2	4	C62030051	96238	1	16
CM15FD101G03	81349	2	4	C80030011	96238	3	36
CM15FD111G03	81349	2	4	C80030031	96238	2	38
CM15FD121G03	81349	2	4	C90030005-01	96238	1	30
CM15FD161G03	81349	2	4	C90030005-02	96238	1	25
CM15FD181G03	81349	2	4	C90030006	96238	1	14
CM15FD201G03	81349	2	4	C90030007	96238	1	12
CM15FD221G03	81349	2	4	C90030010	96238	1	91
CM15FD241G03	81349	2	4	C90030011	96238	1	54
CM15FD271G03	81349	2	4	D80030010	96238	1	49
CM15FD301G03	81349	2	4	D80030020	96238	1	6
CM15FD331G03	81349	2	4	D80030021	96238	4	46
CM15FD361G03	81349	2	4	D80030030	96238	1	53
CM15FD391G03	81349	2	4	D80030040	96238	1	73
CM15FD471G03	81349	2	4	D80030041	96238	1	104
CM15FD471G03	81349	2	4	D90030001	96238	1	48
CM15FD511G03	81349	2	4	D90030002	96238	1	46
CM15FD560G03	81349	2	4	D90030003	96238	1	29

NATIONAL STOCK NUMBER AND PART NUMBER INDEX

PART NUMBER	FSCM	FIG. NO.	ITEM NO.	PART NUMBER	FSCM	FIG. NO.	ITEM NO.
FHN20G	80063	1	18	RC07GF363J	81349	3	30
FT940DTUR	98291	1	27	RC07GF391J	81349	3	32
F02A250V1-4AS	81349	1	1	RC07GF393J	91349	2	28
F02A250V2AS	81349	1	4	RC07GF393J	81349	4	42
JJ089	81349	1	64	RC07GF472J	81349	2	21
MC11E8-3SN	71468	1	69	RC07GF472J	81349	4	41
MC11J	54715	1	19	RC07GF473J	81349	3	27
MC142-8-3PN	71468	1	93	RC07GF473J	81349	4	44
MS15567-1	96906	1	72	RC07GF510J	81349	2	33
MS15795-308	96906	1	85	RC07GF512J	81349	3	25
MS20365-440A	96906	1	99	RC07GF512J	81349	4	40
MS21318-21	96906	1	103	RC07GF513J	81349	3	12
MS25098-30	96906	1	62	RC07GF513J	81349	4	15
MS25100-22	96906	1	55	RC07GF561J	81349	1	120
MS25237-327	96906	1	45	RC07GF561J	81349	2	25
MS25256-2	96906	1	57	RC07GF561J	81349	4	23
MS25256-8	96906	1	44	RC07GF562J	81349	2	26
MS35059-26	91349	1	43	RC07GF562J	81349	3	31
	96906			RC07GF621J	81349	3	23
MS35233-17	96906	1	41	RC07GF682J	81349	3	22
MS35233-18	96906	1	100	RC07GF682J	81349	4	31
MS35233-28	81349	2	37	RC07GF750J	81349	3	18
MS35233-30	96906	1	11	RC07GF752J	81349	4	39
	96906			RC07GF753J	81349	3	24
	96906			RC07GF821J	81349	3	26
MS35337-78	96906	1	36	RC07GF822J	81349	3	33
MS35337-79	96906	1	97	RC07GF910J	81349	2	34
	96906			RC20GF102J	81349	4	18
	96906			RC20GF133J	81349	1	13
MS35649-64	96906	1	52	RC20GF221J	81349	2	31
MS35650-104	96906	1	84	RC20GF391J	81349	4	29
MS91528-1K2B	96906	1	96	RC32GF122J	81349	1	108
NW10-4374	95987	1	87		81349		
RC07GF101J	81349	2	15	RC32GF621J	81349	2	32
RC07GF101J	81349	3	21	RC42GF101J	81349	1	109
RC07GF101J	81349	4	21	RC42GF132J	81349	1	110
RC07GF102J	81349	2	13	RC42GF472J	81349	1	24
RC07GF102J	81349	3	15	RV4LAYSD252A	81349	1	21
RC07GF102J	81349	4	22	RV5LAYSB102A	81349	2	18
RC07GF103J	81349	2	29	RV5LAYSB103A	81349	1	26
RC07GF103J	81349	3	20	RW67V302	81349	1	9
RC07GF103J	81349	4	27	RW67V330	81349	1	107
RC07GF104J	81349	2	23	RW67V5R1	81349	1	111
RC07GF104J	81349	3	13	RW69V1R0	81349	1	105
RC07GF104J	81349	4	16	RW69V301	91349	1	119
RC07GF122J	81349	4	34	SCB983168	80063	1	5
RC07GF123J	81349	2	24	SCC76202-1	80063	1	83
RC07GF123J	81349	4	30	SCC98314GR4	80063	1	2
RC07GF132J	81349	4	35	SCD98303GR4	80063	1	3
RC07GF133J	81349	4	38	SMB552121	80063	1	102
RC07GF151J	81349	2	35	SMB552122	80063	1	63
RC07GF151J	81349	4	33	SR5L1	28520	1	68
RC07GF152J	81349	2	19	ST201	96238	4	13
RC07GF153J	81349	3	14	SW10	95987	1	88
RC07GF153J	81349	4	17	U106U	81349	1	82
RC07GF154J	81349	3	34	1N277	81350	1	10
RC07GF163J	81349	4	37	1N277	81350	3	6
RC07GF182J	81349	3	28	1N277	81350	4	9
RC07GF183J	81349	3	16	1N2982	81349	1	33
RC07GF183J	81349	4	19	1N2988B	81349	1	34
RC07GF202J	81349	4	32	1N538M	81349	1	106
RC07GF203J	81349	2	14	1N645	81350	1	7
RC07GF203J	81349	3	29	1N645	81350	2	8
RC07GF203J	81349	4	28	1N645	81350	3	7
RC07GF221J	81349	1	42	1N645	81350	4	8
RC07GF221J	81349	4	25	12-30XP13	9563	1	89
RC07GF222J	81349	2	30	2N297A	81349	1	28
RC07GF223J	81349	2	22	2N398	80064	4	11
RC07GF223J	81349	3	17	2N404	81349	2	12
RC07GF223J	81349	4	20	2N404	81349	3	8
RC07GF243J	81349	4	24	2N404	81349	4	10
RC07GF271J	81349	1	47	2N526	81349	3	11
RC07GF273J	81349	4	36	2N697	81350	2	10
RC07GF301J	81349	2	27	2N697	81350	3	10
RC07GF302J	81349	3	19	2N697	81350	4	14
RC07GF302J	81349	4	26	2N706M	81350	2	11
RC07GF303J	81349	4	43	2N706M	81350	3	9
RC07GF335J	81349	2	17	2N706M	81350	4	12
RC07GF335J	81349	2	20	2104-06-00	78189	1	32
RC07GF363J	81349	2	16	2110-2	92701	1	61

NATIONAL STOCK NUMBER AND PART NUMBER INDEX

PART NUMBER	FSCM	FIG. NO.	ITEM NO.	PART NUMBER	FSCM	FIG. NO.	ITEM NO.
31-1	81073	2	36	43010003	96238	2	9
31-1	81073	3	35	7274775	16758	1	15
31-1	81073	4	45	80	79963	1	35
34200HSA2	80063	1	92	8577A0632-1B	6540	1	37
379	79963	1	56	9224A140-1A	6540	1	17

LATEST NATIONAL STOCK NUMBER ASSIGNMENTS

STOCK NUMBER	FIGURE NO.	ITEM NO.
5905-00-106-9357	3	18
5905-00-110-0916	4	18
5905-00-110-7622	3	22
5905-00-110-7622	4	31
5905-00-111-4841	1	13
5905-00-115-8055	2	28
5905-00-115-8055	4	42
5999-00-441-1688	1	15
5920-00-556-0144	1	92
5910-00-725-4795	2	2
5910-00-727-2550	2	4
5961-00-821-8976	1	28
5961-00-837-7262	3	10
5961-00-837-7262	4	14
5960-00-848-8625	1	33
5910-00-850-0541	2	4
5910-00-850-9492	1	22
5910-00-855-6634	1	70
5961-00-892-3473	3	11
5910-00-897-9615	1	23
5910-00-913-0226	1	112
5910-00-925-1747	1	113
5910-00-926-8217	1	117
5910-00-934-2865	2	2
5910-00-934-2865	3	1
5910-00-934-2865	4	1
5910-00-934-2924	1	116
5910-00-936-3930	4	5
5310-00-950-1514	1	87

LATEST PART NUMBER ASSIGNMENTS

PART NUMBER	FSCM	FIG. NO.	ITEM NO.
CE44C101K	81349	1	23
MS51957-14	96906	1	77
MS51957-31	96906	1	95
MS51958-62	96906	1	59
MS35338-138	95987	1	86
MS35649-244	96906	1	76
RCR32G302J8	81349	1	118

ADDITIONAL LATEST NATIONAL STOCK NUMBER ASSIGNMENTS

STOCK NUMBER	FIGURE NO.	ITEM NO.
5305-00-054-5648	1	77
5305-00-054-6655	1	95
5905-00-106-9354	1	118
5999-00-441-1688	1	15
5310-00-933-8120	1	86
5910-00-934-2865	3	1
5305-00-934-9748	1	76
5310-00-934-9761	1	52
5310-00-950-1514	1	87

By Order of the Secretary of the Army:

BERNARD W. ROGERS
General, United States Army
Chief of Staff

Official:

J. C. PENNINGTON
Brigadier General, United States Army
The Adjutant General

Distribution:

Active Army:

HISA (Ft Monmouth) (26)	29-610
USAINSCOM	Units org under fol TOE:
COE (1)	(1 cy each unit)
TSG (1)	11-15
USAARENBD (1)	11-17
DARCOM (1)	11-38
TRADOC (2)	11-45
OS Maj Comd (4)	11-46
TECOM (2)	11-97
USACC (4)	11-98
MDW (1)	11-117
Armies (2)	1-127
Corps (2)	11-215
USAOC&S (2)	11-216
USATSCH (2)	11-217
USAQMS (2)	11-218
Svc Colleges (1)	11-225
USASIGS (5)	11-227
USAADS (2)	11-228
USAFAS (2)	11-237
USAARMS (2)	11-302
USAIS (2)	11-327
USAES (2)	11-347
USAICS (3)	11-367
MAAG (1)	11-500 (AA-AC)
USARMIS (1)	29-1
USAERDAA (1)	29-5
USAERDAW (1)	29-6
USACC—EUR (5)	29-11
USACC—PAC (5)	29-15
USACC—SO (2)	29-16
USACC—A (2)	29-21
Ft Gordon (10)	29-25
Ft Huachuca (10)	29-26
Ft Carson (5)	29-35
Ft Gillem (10)	29-36
Ft Richardson (CERCOM Ofc) (2)	29-51
Army Dep (1) except	29-55
LBAD (14)	29-106
SAAD (30)	29-134
TOAD (14)	29-136
SHAD (3)	29-137
USA Dep (1)	29-139
Sig Sec USA Dep (1)	29-207
Units org under fol TOE:	29-245
(2 cys each unit)	29-246
29-207	

NG: State AG (3); Units—Same as Active Army except allowance is one copy per unit.

USAR: None

For explanation of abbreviations used, see AR 310-50.

RECOMMENDED CHANGES TO EQUIPMENT TECHNICAL MANUALS



SOMETHING WRONG WITH THIS MANUAL?

THEN... JOT DOWN THE DOPE ABOUT IT ON THIS FORM, TEAR IT OUT, FOLD IT AND DROP IT IN THE MAIL!

FROM: (YOUR UNIT'S COMPLETE ADDRESS)

Commander
Stateside Army Depot
ATTN: AMSTA-US
Stateside, N.J. 07703

DATE 10 July 1975

PUBLICATION NUMBER

TM 11-5840-340-12

DATE

23 Jan 74

TITLE

Radar Set AN/P-3-76

BE EXACT... PIN-POINT WHERE IT IS

IN THIS SPACE TELL WHAT IS WRONG AND WHAT SHOULD BE DONE ABOUT IT:

PAGE NO.	PARA-GRAPH	FIGURE NO.	TABLE NO.	
2-25	2-28			<p>Recommend that the installation antenna alignment procedure be changed through to specify a 2° IFF antenna lag rather than 1°.</p> <p>REASON: Experience has shown that with only a 1° lag, the antenna servo system is too sensitive to wind gusting in excess of 25 knots, and has a tendency to rapidly accelerate and decelerate as it hunts, causing strain to the drive train. Hurting is minimized by adjusting the lag to 2° without degradation of operation.</p>
3-10	3-3		3-1	<p>Item 5, Function column. Change "2 db" to "3db."</p> <p>REASON: The adjustment procedure for the TRANS POWER FAULT indicator calls for a 3 db (500 watts) adjustment to light the TRANS POWER FAULT indicator.</p>
5-6	5-8			<p>Add new step f.1 to read, "Replace cover plate removed in step e.1, above."</p> <p>REASON: To replace the cover plate.</p>
		FO3		<p>Zone C 3. On J1-2, change "+24 VDC to "+5 VDC."</p> <p>REASON: This is the output line of the 5 VDC power supply. + 24 VDC is the input voltage.</p>

TEAR ALONG DOTTED LINE

TYPED NAME, GRADE OR TITLE, AND TELEPHONE NUMBER

SSG I. M. DeSpirito 999-1776

SIGN HERE:

SSG I. M. DeSpirito

DA FORM 2028-2
1 AUG 74

P.S.--IF YOUR OUTFIT WANTS TO KNOW ABOUT YOUR MANUAL "FIND," MAKE A CARBON COPY OF THIS AND GIVE IT TO YOUR HEADQUARTERS.

HISA 1686-75

FILL IN YOUR
UNIT'S ADDRESS

FOLD BACK

DEPARTMENT OF THE ARMY

OFFICIAL BUSINESS

PENALTY FOR PRIVATE USE, \$300

POSTAGE AND FEES PAID
DEPARTMENT OF THE ARMY
DOD-314



Commander
US Army Communications and
Electronics Materiel Readiness Command
ATTN: DRSEL-ME-MQ
Fort Monmouth, New Jersey 07703

TEAR ALONG DOTTED LINE

FOLD BACK

REVERSE OF DA FORM 2026-2

