

**LUBRICATION**

**ORDER**

**LO5-6115-400-12**

**7 OCTOBER 1975** (Supersedes LO5-6115-400-12 Dtd 11 OCT 1968)

**GENERATOR SET, DIESEL ENGINE: 200 KW, 3 PHASE, 60 CYCLE,  
CONVERTIBLE TO 167 KW, 50 CYCLE, SKID MOUNTED  
(MILITARY STANDARD MODEL SF-200-MD/CIED)  
W/ALLIS CHALMERS ENGINE MODEL 25000**

Reference: FEDERAL SUPPLY CATALOG C9100-IL

Intervals are based on normal hours of operation. Adjust to compensate for abnormal operation and severe conditions or contaminated lubricants. During inactive periods, sufficient lubrication must be performed for adequate preservation.

Clean fittings before lubricating.

Relubricate after washing.

Drain crankcase only when hot after operation; replenish and check level when cool.

**WARNING**

Dry cleaning solvent, P-D-680, used to clean parts is potentially dangerous to personnel and property. Avoid repeated and prolonged skin contact. Do not use near open flame or excessive heat. Flash point of solvent is 100 degrees F. (38° C.) - 138 degrees F. (59° C.).

Clean parts with SOLVENT, dry-cleaning (Federal Specification P-D-680). Dry before lubricating.

\* The time specified is the time required to perform all services at the particular interval.

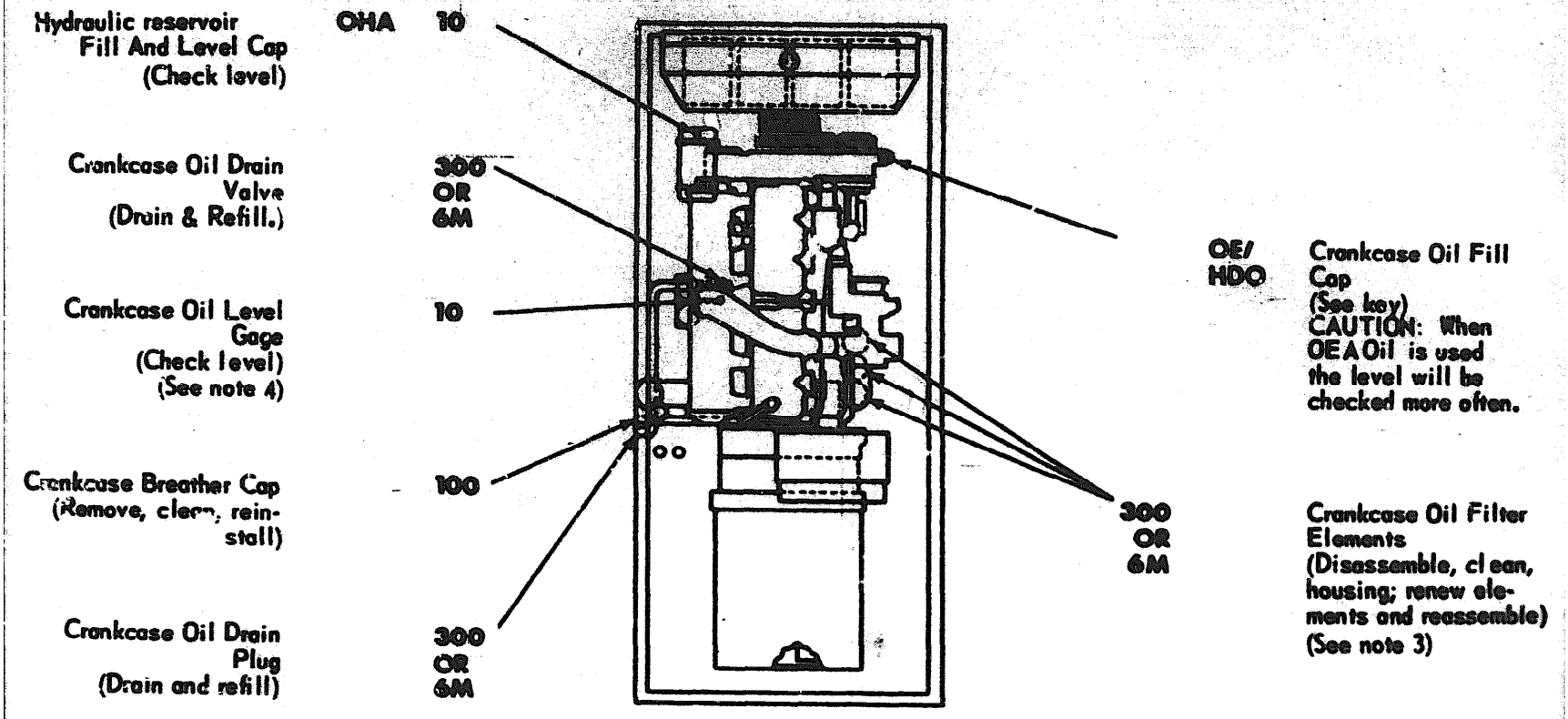
* TOTAL MAN-HR		* TOTAL MAN-HR	
INTERVAL	MAN-HR	INTERVAL	MAN-HR
10	0.4	100	0.2
		300	1.0

FOLD

FOLD

LUBRICANT ● INTERVAL

INTERVAL ● LUBRICANT



Hydraulic reservoir  
Fill And Level Cap  
(Check level)

OHA 10

Crankcase Oil Drain  
Valve  
(Drain & Refill.)

300  
OR  
6M

Crankcase Oil Level  
Gage  
(Check level)  
(See note 4)

10

Crankcase Breather Cap  
(Remove, clean, re-  
install)

100

Crankcase Oil Drain  
Plug  
(Drain and refill)

300  
OR  
6M

OE/  
HDO  
Crankcase Oil Fill  
Cap  
(See key)  
CAUTION: When  
OEA Oil is used  
the level will be  
checked more often.

300  
OR  
6M  
Crankcase Oil Filter  
Elements  
(Disassemble, clean,  
housing; renew ele-  
ments and reassemble)  
(See note 3)

-KEY-

LUBRICANTS	CAPACITY	EXPECTED TEMPERATURES			INTERVALS
		Above +32° F 0° C	+40° F to -10° F +5° C to -23° C	0° F to -65° F -18° C to -50° C	
<b>OE/HDO-LUBRICATING OIL, Engine</b>		OE/HDO 30	OE/HDO 10	OEA	Intervals given are in hours of normal operation
Crankcase	44 qts (41.8L)				
Oil Can Points					
<b>OEA-Lubricating Oil, Artic</b>					
<b>OHA-FLUID, Hydraulic, Petroleum Base</b>					
Hydraulic Fluid Tank	8 qts (7.6L)				

**NOTES:**

1. **FOR OPERATION OF EQUIPMENT IN PROTRACTED COLD TEMPERATURES BELOW -10° F. (-23° C).** Remove lubricants prescribed in the key for temperatures above -10° F. (-23° C). Clean parts with SOLVENT, dry-cleaning. Relubricate with lubricants specified in the key for temperatures below -10° F. (-23° C).

2. **OIL FILTER.** After installing new filter element, fill crankcase, operate engine 5 minutes, check housing for leaks, check crankcase oil level and bring to full mark.

3. **OIL CAN POINTS.** Every 100 hours lubricate hinges, latches, control linkages, and all exposed adjusting threads with OE/HDO.

4. **OIL LEVEL GAGE.** Gage is marked on both sides. One side indicates static oil level and other side is marked for running oil level.

Copy of this Lubrication Order will remain with the equipment at all times; instructions contained herein are mandatory.

By Order of the Secretary of the Army:

**FRED C. WEYAND**  
General, United States Army  
Chief of Staff

FOLD

FOLD

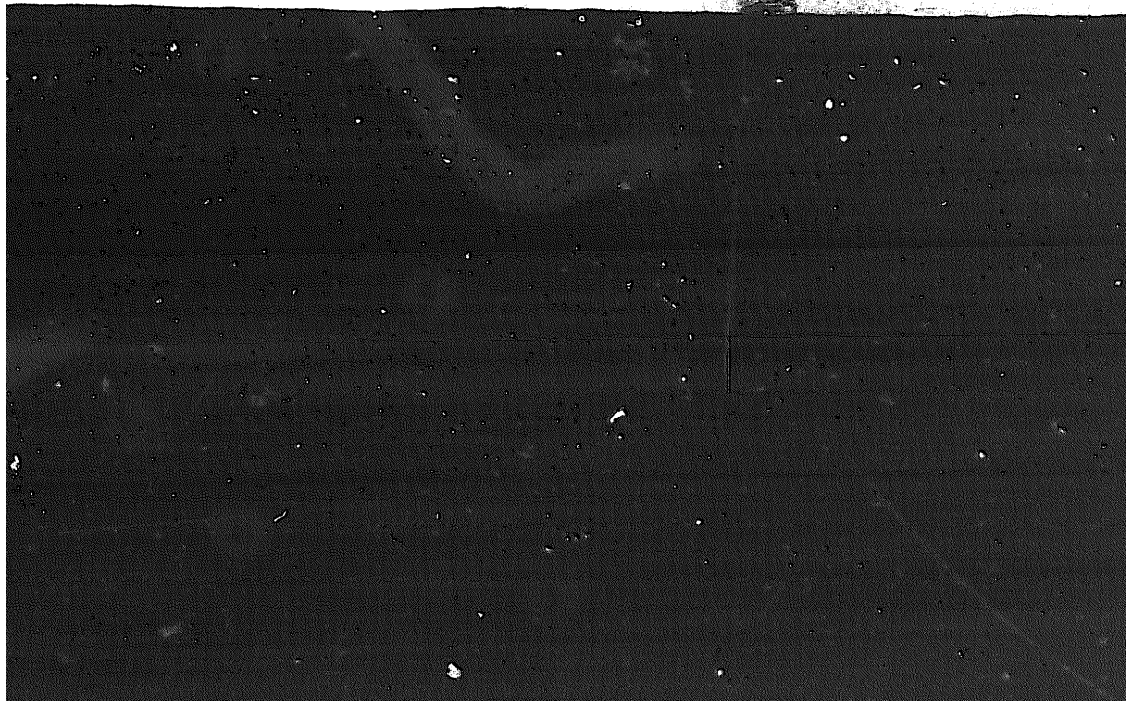


**END**

9-18-83

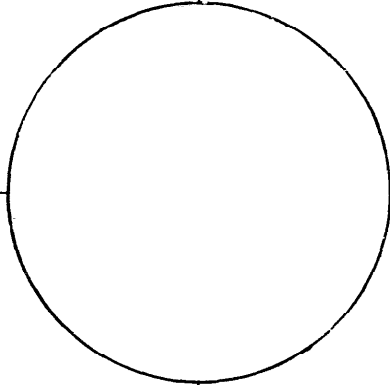
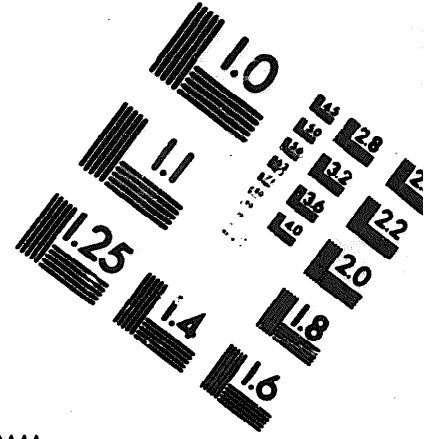
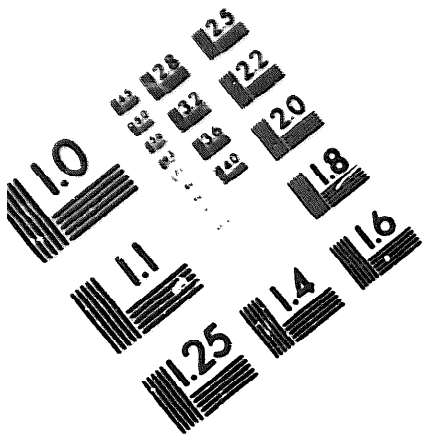
**DATE**





DEPARTMENT OF THE ARMY

MICROFORM  
TEST TARGET



150 MM

1.0 mm (e= .81 mm)

ABCDEFGHIJKLMN OPQRSTUVWXYZ 1234567890  
abcdefghijklmnopqrstuvwxyz \$%&/'%# 1/2 1/4 3/4 —=+ x&@\*

1.5 mm (e= 1.09 mm)

ABCDEFGHIJKLMN OPQRSTUVWXYZ 1234567890  
abcdefghijklmnopqrstuvwxyz \$%&/'%# 1/2 1/4 3/4 —=+ x&@\*

2.0 mm (e= 1.37 mm)

ABCDEFGHIJKLMN OPQRSTUVWXYZ  
abcdefghijklmnopqrstuvwxyz  
1234567890 \$%&/'%# 1/2 1/4 3/4 —=+ x&@\*

2.5 mm (e= 1.77 mm)

ABCDEFGHIJKLMN OPQRSTUVWXYZ  
abcdefghijklmnopqrstuvwxyz  
1234567890 \$%&/'%# 1/2 1/4 3/4 —=+ x&@\*

1.0 mm (e= .81 mm)

ABCDEFGHIJKLMN OPQRSTUVWXYZ 1234567890  
abcdefghijklmnopqrstuvwxyz \$%&/'%# 1/2 1/4 3/4 —=+ x&@\*

1.5 mm (e= 1.09 mm)

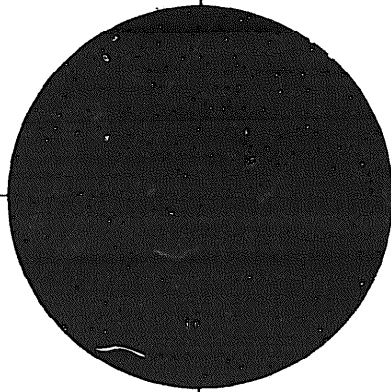
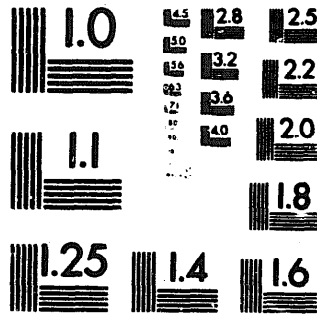
ABCDEFGHIJKLMN OPQRSTUVWXYZ 1234567890  
abcdefghijklmnopqrstuvwxyz \$%&/'%# 1/2 1/4 3/4 —=+ x&@\*

2.0 mm (e= 1.37 mm)

ABCDEFGHIJKLMN OPQRSTUVWXYZ  
abcdefghijklmnopqrstuvwxyz  
1234567890 \$%&/'%# 1/2 1/4 3/4 —=+ x&@\*

2.5 mm (e= 1.77 mm)

ABCDEFGHIJKLMN OPQRSTUVWXYZ  
abcdefghijklmnopqrstuvwxyz  
1234567890 \$%&/'%# 1/2 1/4 3/4 —=+ x&@\*



200 MM

250 MM

