

**TECHNICAL MANUAL**

**UNIT, INTERMEDIATE DIRECT SUPPORT  
AND GENERAL SUPPORT MAINTENANCE  
REPAIR PARTS AND SPECIAL TOOLS LIST  
FOR**

**DIGITAL ELECTRONIC COUNTER  
AN/USM-459A  
(NSN 6625-01-271-3012)**

Distribution authorized to the Department of Defense and DOD contractors only for official use or for administration or operational purposes. This determination was made on 2 November 1988. Other requests for this document will be referred to Commander, US Army Communications-Electronics Command and Fort Monmouth, ATTN: AMSEL-LC-ME-P, Fort Monmouth, NJ 07703-5000.

DESTRUCTION NOTICE— Destroy by any method that will prevent disclosure of contents or reconstruction of the document.

---

**HEADQUARTERS, DEPARTMENT OF THE ARMY**

**15 FEBRUARY 1989**



Technical Manual

No. 11-6625-3232-24P

HEADQUARTERS  
DEPARTMENT OF THE ARMY  
Washington, DC, 15 February 1989

UNIT, INTERMEDIATE DIRECT SUPPORT AND  
GENERAL SUPPORT MAINTENANCE  
REPAIR PARTS AND SPECIAL TOOLS LIST  
FOR  
DIGITAL ELECTRONIC COUNTER AN/USM-459A  
(NSN 6625-01-271-301.2)

Current as of 13 February 1989

REPORTING ERRORS AND RECOMMENDING IMPROVEMENTS

You can help improve this manual. If you find any mistakes or if you know of a way to improve the procedures, please let us know. Mail your letter, DA Form 2028 (Recommended Changes to Publications and Blank Forms), or DA Form 2028-2 located in back of this manual direct to: Commander, US Army Communications-Electronics Command and Fort Monmouth, ATTN: AMSEL-LC-ME-PS, Fort Monmouth, New Jersey 07703-5000.

In either case, a reply will be furnished direct to you.

Table of Contents

		Page	Illus Figure
Section I.	Introduction . . . . .	1	
	II. Repair Parts List.. . . .	1-1	
Group 00	Digital Electronic Counter AN/USM-459A..	1-1	1
	01 Chassis Assembly. . . . .	2-1	2
	02 Motherboard Assembly . . . . .	3-1	3
Section III.	Special Tools List (Not applicable)		
IV.	Cross-Reference Indexes		
	National Stock Number Index . . . . .	I-1	
	Part Number Index . . . . .	I-2	
	Figure and Item Number Index . . . . .	I-7	



## SECTION I

### INTRODUCTION

---

#### 1 . Scope

This manual lists and authorizes spares and repair parts; special tools; special test, measurement, and diagnostic equipment (TMDE); and other special support equipment required for performance of organizational, direct support, and general support maintenance of the Digital Electronic Counter (AN/USM-459A). It authorizes the requisitioning, issue, and disposition of spares, repair parts and special tools as indicated by the source, maintenance and recoverability (SMR) codes.

#### 2. General

This Repair Parts and Special Tools List is divided into the following sections:

a. Section II. Repair Parts List. A list of spares and repair parts authorized by this RPSTL for use in the performance of maintenance. The list also includes parts which must be removed for replacement of the authorized parts. Parts lists are composed of functional groups in ascending numeric sequence, with the parts in each group listed in ascending item number sequence. Figure numbers are listed directly beneath the group header. Items listed are shown on the associated illustration(s).

b. Section III. Special Tools List. Not applicable.

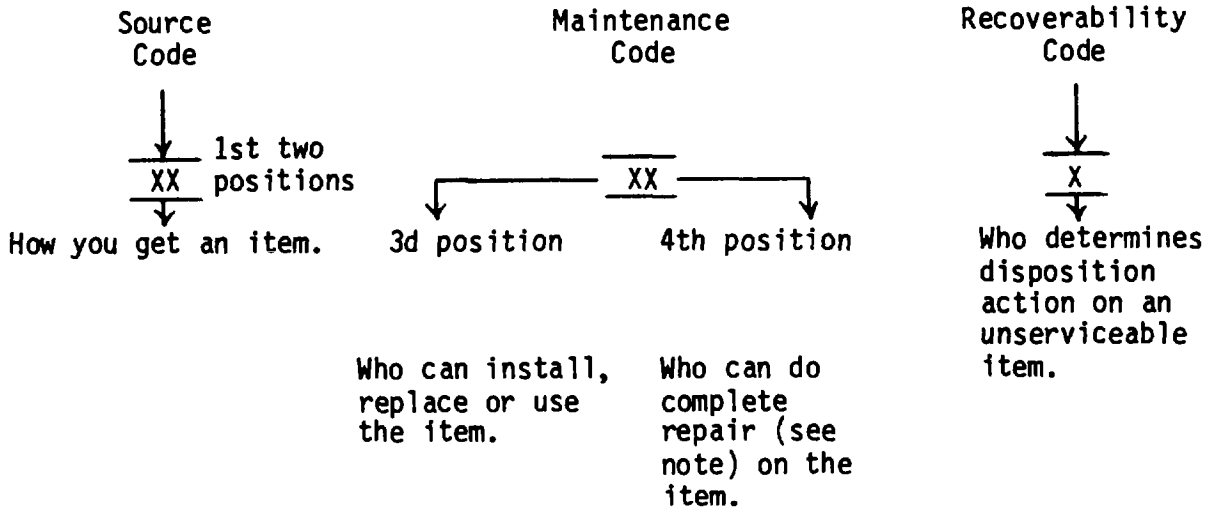
c. Section IV. Cross-Reference Indexes. A list, in National Item Identification Number (NIIN) sequence, of all National stock-numbered items appearing in the listing, followed by a list in alphameric sequence of all part numbers appearing in the listings. National Stock Numbers and part numbers are cross-referenced to each illustration figure and item number appearance.

The figure number and item number index lists figure and item numbers in numeric sequence and cross-references National Stock Number, Federal Supply Code for Manufacturer, and part numbers.

#### 3. Explanation of Columns (Section II and III)

a. Item No. (Column (1)). Indicates the number used to identify items called out in the illustration.

b. SMR Code (Column (2)). The source, maintenance, and recoverability (SMR-code is a five-position code containing supply/requisitioning information, maintenance category authorization criteria, and disposition instruction, as shown in the following breakout:



**NOTE**

**Complete Repair:** Maintenance capacity, capability, and authority to perform all corrective maintenance tasks of the "Repair" function in a use/user environment in order to restore serviceability to a failed item.

(1) Source code. The source code tells you how to get an item needed for maintenance, repair, or overhaul of an end item/equipment. Explanations of source codes follow:

<u>Code</u>	<u>Explanation</u>
PA PB PC PD PE PF PG	Stocked items; use the applicable NSN to request/requisition items with these source codes. They are authorized to the category indicated by the code entered in the third position of the SMR code.

**NOTE**

Items coded PC are subject to deterioration.

Code

Explanation

KD  
KF  
KB

Items with these codes are not to be requested/requisitioned individually. They are part of a kit which is authorized to the maintenance category indicated in the third position of the SMR code. The complete kit must be requisitioned and applied.

MO-Made at org/AVUM category  
MF-Made at DS/AVIM category  
MH-Made at GS category  
ML-Made at Specialized Repair Activity (SRA)  
MD-Made at Depot

Items with these codes are not to be requested/requisitioned individually. They must be made from bulk material which is identified by the part number in the description and usable on code (UOC) column and listed in the Bulk Material group of the repair parts list. If the item is authorized to you by the third position code of the SMR code, but the source code indicates it is made at a higher category, order the item from the higher category of maintenance.

AO-Assembled by org/AVUM category  
AF-Assembled by DS/AVIM category  
AH-Assembled by GS category  
AL-Assembled by SRA  
AD-Assembled by Depot

Items with these codes are not to be requested/requisitioned individually. The parts that make up the assembled item must be requisitioned or fabricated and assembled at the category of maintenance indicated by the source code. If the third position code of the SMR code authorizes you to replace the item, but the source code indicates the item is assembled at a higher category, order the item from the higher category of maintenance.

Code

Explanation

- XA - Do not requisition an "XA" coded item. Order its next higher assembly.
- XB - If an "XB" item is not available from salvage, order it using the FSCM and part number given.
- XC - Installation drawing, diagram, instruction sheet, field service drawing, that is identified by manufacturers part number.
- XD - Item is not stocked. Order an "XD" coded item through normal supply channels using the FSCM and part number given, if no NSN is available.

NOTE

Cannibalization or controlled exchange, when authorized, may be used as a source of supply for items with the above source codes, except for those source coded "XA" or those aircraft support items restricted by requirements of AR 750-1.

(2) Maintenance code. Maintenance codes tell you the category of maintenance authorized to USE and REPAIR support items. The maintenance codes are entered in the third and fourth positions of the SMR code as follows:

(a) The maintenance code entered in the third position tells you the lowest maintenance category authorized to remove, replace, and use an item. The maintenance code entered in the third position will indicate authorization to one of the following categories of maintenance.

<u>Code</u>	<u>Application/Explanation</u>
C--	Crew or operator maintenance done within organizational or aviation maintenance.
O--	Organizational or aviation unit category can remove, replace, and use the item.
F--	Direct support or aviation intermediate category can remove, replace, and use the item.
H--	General support category can remove, replace, and use the item.
L--	Specialized repair activity can remove, replace, and use the item.
D--	Depot category can remove, replace, and use the item.

(&) The maintenance code entered in the fourth position tells whether or not the item is to be repaired and identifies the lowest maintenance category with the capability to do complete repair (i.e., perform all authorized repair functions). This position will contain one of the following maintenance codes:

NOTE

Some limited repair may be done on the item at a lower category of maintenance, if authorized by the Maintenance Allocation Chart (MAC) and SMR codes.

<u>Code.</u>	<u>Application/Explanation</u>
O--	Organizational or aviation unit is the lowest category that can do complete repair of the item.
F--	Direct support or aviation intermediate is the lowest category that can do complete repair of the item.
H--	General support is the lowest category that can do complete repair of the item.
L--	Specialized repair activity (designate the specialized repair activity) is the lowest category that can do complete repair of the item.
D--	Depot is the lowest category that can do complete repair of the item.



<u>Code</u>	<u>Application/Explanation</u>
-------------	--------------------------------

Z--Nonreparable. No repair is authorized.

B--No repair is authorized. (No parts or special tools are authorized for the maintenance of a "B" coded item). However, the item may be reconditioned by adjusting, lubricating, etc., at the user category.

(3) Recoverability code. Recoverability codes are assigned to items to indicate the disposition action on unserviceable items. The recoverability code is entered in the fifth position of the SMR Code as follows:

<u>Recoverability Codes</u>	<u>Application/Explanation</u>
---------------------------------	--------------------------------

Z--Nonreparable item. When unserviceable, condemn and dispose of the item at the category of maintenance shown in third position of SMR Code.

O--Reparable item. When uneconomically repairable, condemn and dispose of the item at organizational or aviation unit category.

F--Reparable item. When uneconomically repairable, condemn and dispose of the item at the direct support or aviation intermediate category.

H--Reparable item. When uneconomically repairable, condemn and dispose of the item at the general support category.

D--Reparable item. When beyond lower category repair capability, return to depot. Condemnation and disposal of item not authorized below depot category.

L--Reparable item. Condemnation and disposal not authorized below specialized repair activity (SRA).

A--Item requires special handling or condemnation procedures because of specific reasons (e.g., precious metal content, high dollar value, critical material, or hazardous material). Refer to appropriate manuals/directives for specific instructions.

c. FSCM (Column (3)). The Federal Supply Code for Manufacturer (FSCM) is a 5-digit numeric code which is used to identify the manufacturer, distributor, or Government agency, etc., that supplies the item.

d. PART NUMBER (Column (4)). Indicates the primary number used by the manufacturer (individual, company, firm, corporation, or Government activity), which controls the design and characteristics of the item by means of its engineering drawings, specifications, standards, and inspection requirements to identify an item or range of items.

NOTE

When you use a NSN to requisition an item, the item you receive may have a different part number from the part ordered.

e. Description and Usable on CODE (UOC) (Column (5)). This column includes the following information:

(1) The Federal item name and, when required, a minimum description to identify the item.

(2) The statement "END OF FIGURE" appears just below the last item description in Column (5) for a given figure in both section II and section III.

f. Qty (Column (6)). Indicates the quantity of the item used in the breakout shown on the illustration figure, which is prepared for a functional group, subfunctional group, or an assembly. A "V" appearing in this column in lieu of a quantity indicates that the quantity is variable and the quantity may vary from application to application.

#### 4. Explanation of Columns (Section IV)

##### a. National Stock Number (NSN) Index.

(1) Stock Number column. This column lists the NSN by National Item Identification Number (NIIN) sequence. The NIIN consists of the last nine digits of the NSN. When using this column to locate an item, ignore the first 4 digits of the NSN. When requisitioning items, use the complete NSN (13 digits).

(2) Fig. column. This column lists the number of the figure where the item is identified/located. The illustrations are in numerical order in sections II and III.

(3) Item column. The item number identifies the item associated with the figure listed in the adjacent Fig. column. This item is also identified by the NSN listed on the same line.

b. Part Number Index. Part numbers in this index are listed by part number in ascending alphameric sequence.

(1) FSCM column. This column lists the Federal Supply Code for Manufacturer (FSCM).

(2) Part Number column. This column indicates the part number assigned to the item.

(3) Stock Number column. This column lists the National Stock Number for the associated part number and manufacturer identified in the part number and FSCM columns to the left.

(4) Fig. column. This column lists the number of the figure where the item is identified/located in sections II and III.

(5) Item column. The item number is that number assigned to the item as it appears in the figure referenced in the adjacent figure number column.

c. Figure and Item Number Index.

(1) Fig. column. This column lists the number of the figure where the item is identified/located in sections II and III.

(2) Item column. The item number is that number assigned to the item as it appears in the figure referenced in the adjacent figure number column.

(3) Stock Number column. This column lists the National Stock Number for the item.

(4) FSCM column. The Federal Supply Code for Manufacturer (FSCM) is a 5-digit numeric code used to identify the manufacturer, distributor, or Government agency, etc., that supplies the item.

(5) Part number column. Indicates the primary number used by the manufacturer (individual, firm, corporation, or Government activity), which controls the design and characteristics of the item by means of its engineering drawings, specifications standards, and inspection requirements to identify an item or range of items.

5. **Special Information**

a. Associated Publications. The publication(s) listed below pertain to the AN/USM-459A and its components:

<u>Publication</u>	<u>Short Title</u>
TM 11-6625-3232-12	Digital Electronic Counter, AN/USM-459A
TM 11-6625-3232-40	Digital Electronic Counter, AN/USM-459A

b. National Stock Numbers. National Stock Numbers (NSNs) that are missing from P source coded items have been applied for and will be added to this TM by future change/revision when they are entered in the Army Master Data File (AMDF). Until the NSNs are established and published, submit exception requisitions to: Commander, US Army Communications-Electronics Command and Fort Monmouth, ATTN: AMSEL-LC-MM, Fort Monmouth, NJ 07703-5000 for the part required to support your equipment.

6. **How to Locate Repair Parts**

a. When National Stock Number or part number is not known.

(1) First. Using the table of contents, determine the assembly group or subassembly group to which the item belongs. This is necessary since figures are prepared for assembly groups and subassembly groups, and listings are divided into the same groups.

(2) Second. Find the figure covering the assembly group or subassembly group to which the item belongs.

(3) Third. Identify the item on the figure and note the item number.

(4) Fourth. Refer to the Repair Parts List for the figure to find the part number item number noted on the figure.

(5) Fifth. Refer to the Part Number Index to find the NSN, if assigned.

b. When National stock number or part number is known.

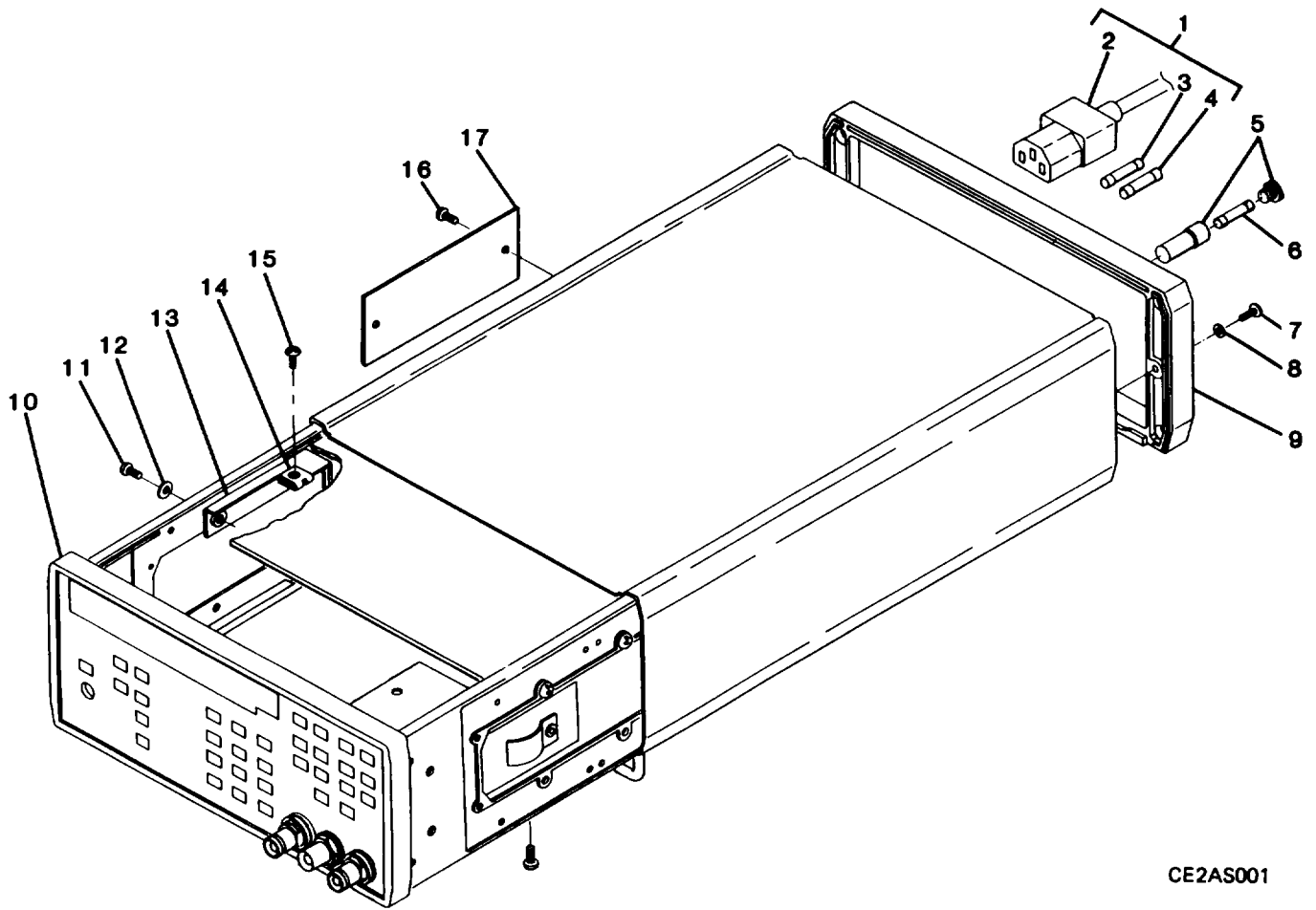
(1) First. Using the index of National stock number and part numbers, find the pertinent National stock number or part number. The NSN index is in National Item Identification Number (NIIN) sequence (para 4a(1)). The part numbers in the part number index are listed in ascending alphameric sequence (para 4b). Both indexes cross-reference you to the illustration figure and item number of the item you are looking for.

(2) Second. After finding the figure and item number, verify that the item is the one you're looking for, then locate the item number in the repair parts list for the figure.

7. Abbreviations.

Not applicable.





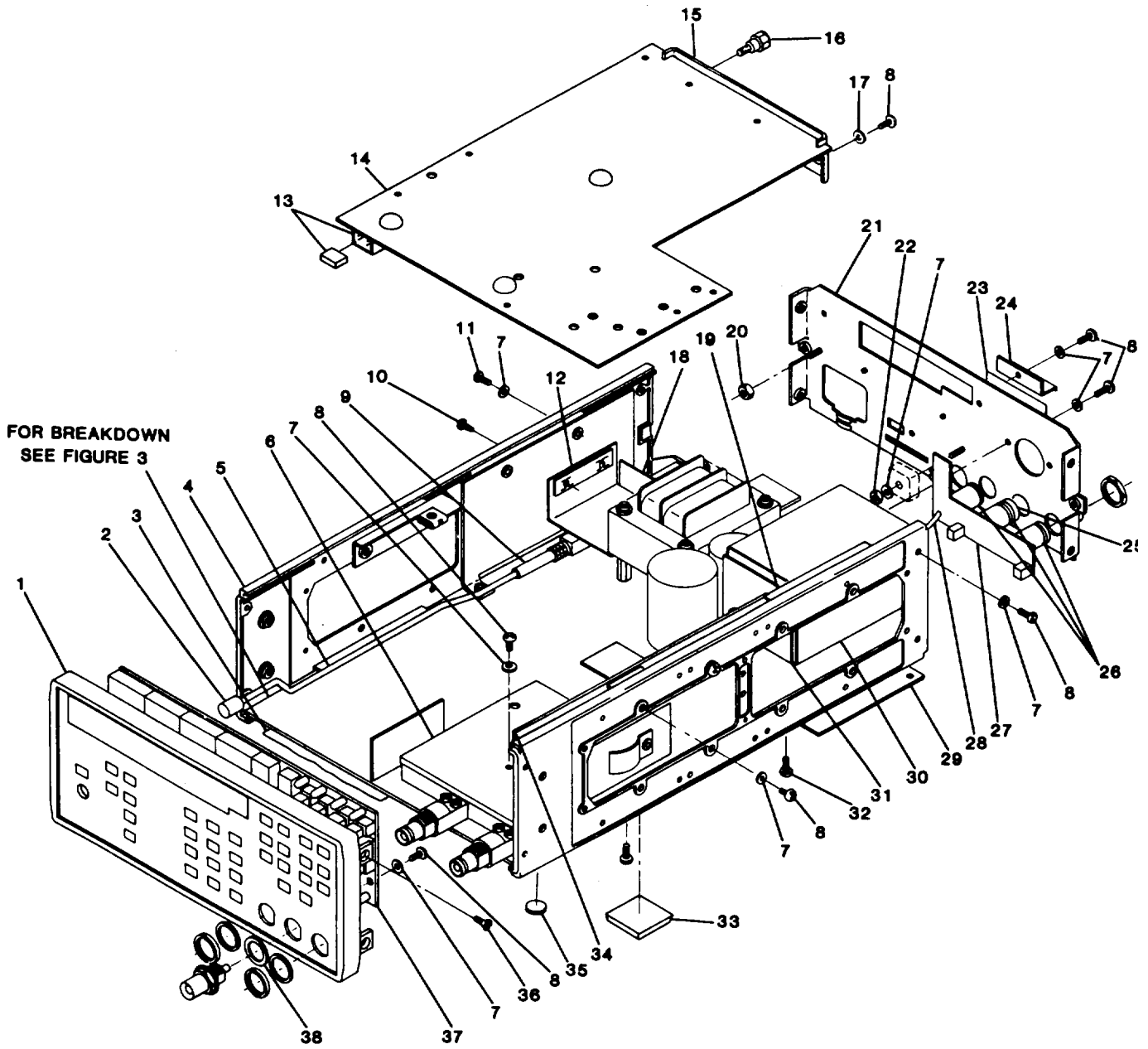
CE2AS001

Figure 1. Counter, AN/USM-459A

SECTION II (1) ITEM NO	(2) SMR CODE	(3) FSCM	TM11-6625-3232-24P (4) PART NUMBER	(5) DESCRIPTION AND USABLE ON CODE (UOC)	(6) QTY
				GROUP 00 DIGITAL ELECTRONIC COUNTER (AN/USM-459A)	
				FIG.1	
1	XBHZZ	21793	404686	SHIPPING KIT	1
2	PAOZZ	21793	600620	CABLE ASSY POWER	1
3	PAOZZ	21793	920756	FUSE .25AMP/250V	1
4	PAOZZ	21793	R-23-0066	FUSE 1/8AMP	1
5	PAOZZ	21793	R-23-0063	COVER FUSEHOLDER	1
6	PAOZZ	21793	920204	FUSE,SLOW BLOW	1
7	PAHZZ	21793	616315	SCREW,MACHINE	2
8	PAHZZ	21793	R-24-2801	WASHER,LOCK	2
9	XBHZZ	21793	R-15-0672	CASTING REAR BEZEL	1
10	XBHZZ	21793	R-13-1976	OVERLAY PANEL FRONT	1
11	PAHZZ	21793	R-24-7543	SCREW METRIC CSK HD	4
12	PAHZZ	21793	R-24-2816	WASHER NYLON	4
13	XBHZZ	21793	R-11-1728	BRACKET ASSY	2
14	PAHZZ	21793	R-24-0146	NUT CAPTIVE	2
15	PAHZZ	21793	R-24-5835	SCREW 6AB X 3/8	2
16	XBHZZ	21793	610949	RIVET PAN HD	2
17	XBHZZ	21793	921137	LABEL IDENT (1992)	1
				END OF FIGURE	

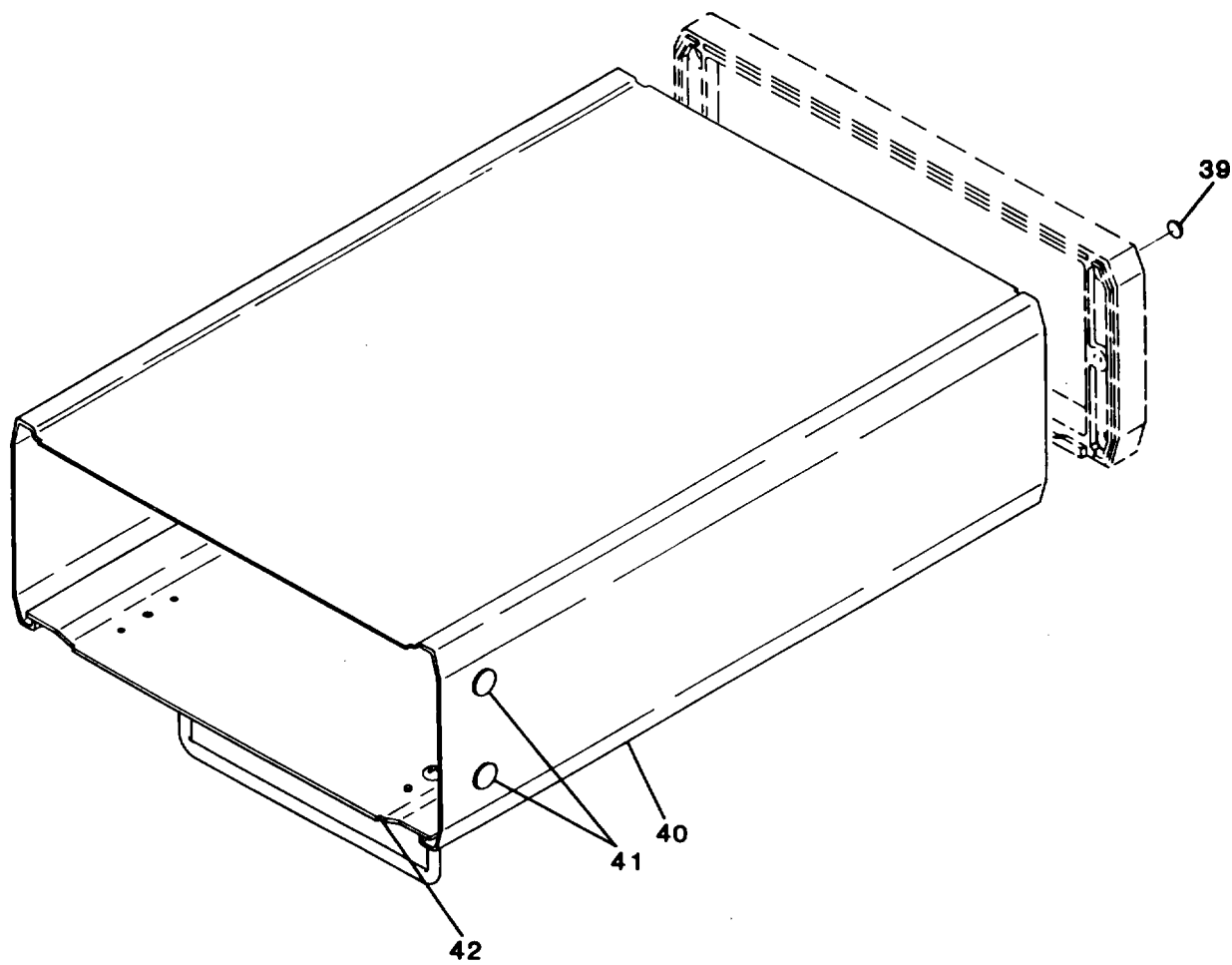






CE2AS002

Figure 2. Counter Chassis (Sheet 1 of 2)



CE2AS003

Figure 2. Counter Chassis (Sheet 2 of 2)

SECTION II (1) ITEM NO	(2) SMR CODE	(3) FSCM	TM11-6625-3232-24P (4) PART NUMBER	(5) DESCRIPTION AND USABLE ON CODE (UOC)	(6) QTY
GROUP 01 CHASSIS ASSEMBLY					
FIG. 2					
	XBHHH	21793	404506	CHASSIS ASSY RPSTL FIGURE-2	1
1	XBHZZ	21793	R-11-1592	PANEL ASSY FRONT	1
2	XBHZZ	21793	R-15-0674	PUSHBUTTON POWER	1
3	XBHZZ	21793	R-18-1239	SCREEN	1
4	XBHZZ	21793	R-11-1643	PANEL ASSY SIDE	2
5	XBHZZ	21793	R-15-0693	ROD SWITCH CONTROL	1
6	XBHZZ	21793	R-13-2024	LID	1
7	PAHZZ	21793	R-24-2801	WASHER, LOCK	16
8	PAHZZ	21793	616315	SCREW, MACHINE	11
9	XBHZZ	21793	R-25-5202	SLEEVING HEATSHRINK	35
10	PAHZZ	21793	611154	SCREW PAN 4B TAP	2
11	PAHZZ	21793	616316	SCREW, MACHINE	6
12	PAHZZ	21793	611153	NUT TWIN-4Z	1
13	PAHZZ	21793	404574	GPIB/55 OPTION	1
14	XBHZZ	21793	401820	PCB ASSY GPIB	1
15	XBHZZ	21793	R-11-1603	PLATE ASSY GPIB	1
16	XBHZZ	21793	630010	BOLT INTERNALLY REL	1
17	PAHZZ	21793	617077	WASHER LOCK	2
18	XBHZZ	21793	455112	SHIELD POWER	1
19	XBHZZ	21793	921065	CARD GUIDE 3INCH	3
20	PAHZZ	21793	617044	NUT, PLAIN, HEXAGON	1
21	XBHZZ	21793	R-11-1593	PANEL ASSY REAR	1
22	PAHZZ	21793	617042	NUT, PLAIN, HEXAGON	1
23	XBHZZ	21793	R-24-6127	LABEL BLANK	1
24	XBHZZ	21793	R-13-2102	PLATE KEEPER	1
25	PAHZZ	21793	R-17-1038	SOCKET FUSED BNC	1
26	PAHZZ	21793	R-23-3421	CONNECTOR RECEPACL	3
27	XBHZZ	21793	R-19-1206	BNC BOARD ASSY	1
28	XBHZZ	21793	500023	WIRE ELECTRICAL	20
29	XBHZZ	21793	455110	COVER	1
30	PAHZZ	21793	404386	OSCILLATOR ASSY	1
31	XBHZZ	21793	401822	PCB ASSY DOUBLER	1
32	XBHZZ	21793	R-24-0244	RIVET PLASTIC	1
33	XBHZZ	21793	R-24-0187	BUTTON RUBBER	1
34	PAHZZ	21793	R-19-1142	PCB ASSY CHANNEL-C	1
35	PAHZZ	21793	R-24-0245	BUMPER PLASTIC	3
36	PAHZZ	21793	R-24-7822	SCREW METRIC CSK HD	4
37	PAHZZ	21793	R-19-1141	DISPLAY BOARD ASSY	1
38	XBHZZ	21793	611072	SPACER BNC	1
39	PAHZZ	21793	R-24-0250	FASTENER PUSH-IN	4
40	PAHZZ	21793	R-13-1972	COVER FORMED	1
41	PAHZZ	21792	R-24-7042	GROMMET BLIND GREY	4
42	PAHZZ	21793	R-11-1623	COVER ASSY BOTTOM	1

END OF FIGURE



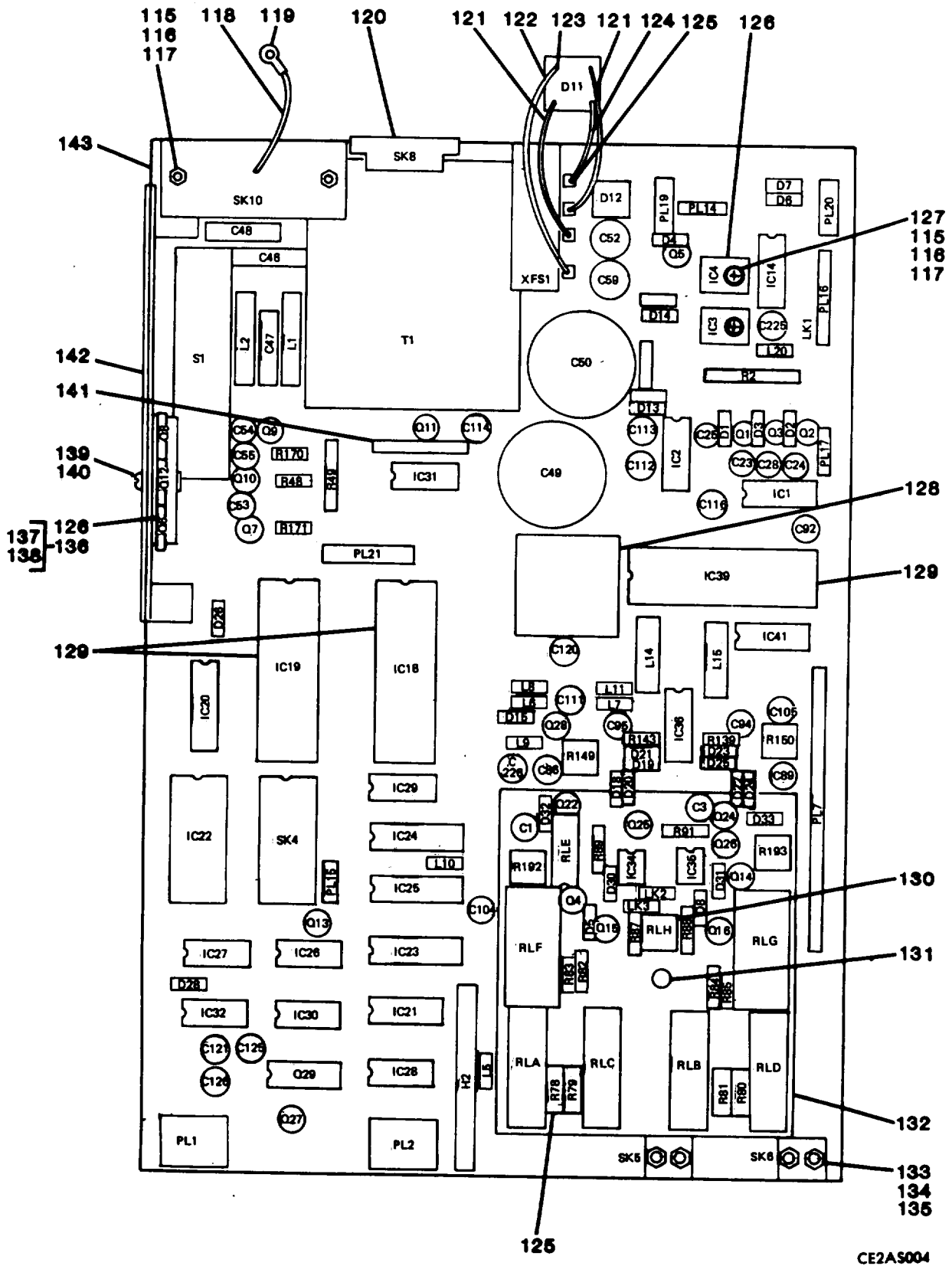


Figure 3. PCB Assy Motherboard (Sheet 1 of 4)



REF. DESIG.	ITEM NO.	REF. DESIG.	ITEM NO.	REF. DESIG.	ITEM NO.	REF. DESIG.	ITEM NO.	REF. DESIG.	ITEM NO.
C1	1	C71	14	C120	1	IC20	36	Q6	67
C2	2	C72	15	C121	20	IC21	37	Q7	68
C3	1	C73	16	C125	1	IC22	38	Q8	69
C4	2	C74	16	C126	20	IC23	39	Q9	70
C5	2	C75	2	C127	2	IC24	40	Q10	70
C6	2	C76	2	C128	3	IC25	36	Q11	66
C7	2	C77	2	C129	2	IC26	41	Q12	69
C8	2	C78	2	C130	2	IC27	42	Q13	68
C9	2	C79	5	C131	2	IC28	43	Q14	66
C10	2	C80	17	C132	5	IC29	44	Q15	71
C11	2	C81	2	C133	5	IC30	45	Q16	71
C12	2	C82	5	C225	1	IC31	46	Q17	72
C13	3	C83	18	C226	1	IC32	47	Q18	72
C14	3	C84	2	D1	21	IC34	48	Q21	72
C22	2	C85	2	D2	21	IC35	48	Q22	66
C23	1	C86	1	D3	21	IC36	49	Q23	72
C24	1	C87	19	D4	21	IC39	50	Q24	66
C25	1	C88	2	D5	22	IC41	51	Q25	73
C26	2	C89	1	D6	21	L1	52	Q26	73
C27	2	C90	2	D7	21	L2	52	Q27	73
C28	1	C91	2	D8	22	L5	53	Q28	68
C35	3	C92	1	D11	23	L6	53	Q29	74
C36	4	C93	2	D12	24	L7	53	R1	75
C37	5	C94	1	D13	21	L8	53	R2	76
C40	2	C95	1	D14	21	L9	53	R3	77
C41	5	C96	2	D15	21	L10	53	R4	77
C42	5	C97	2	D18	25	L11	53	R5	75
C43	5	C98	2	D19	25	L14	54	R6	77
C44	5	C99	2	D20	25	L15	54	R7	75
C45	5	C100	2	D21	25	L20	53	R8	78
C46	6	C101	2	D22	25	LK1	55	R11	79
C47	7	C102	2	D23	25	LK2	56	R16	79
C48	7	C103	2	D24	25	LK3	56	R18	75
C49	8	C104	1	D25	25	LK4	55	R25	80
C50	9	C105	1	D26	21	PL1	57	R28	75
C52	10	C107	5	D28	21	PL2	57	R32	75
C53	1	C108	5	D30	26	PL7	58	R33	75
C54	1	C106	2	D31	26	PL14	59	R35	81
C55	1	C109	2	D32	27	PL15	60	R40	81
C56	11	C110	2	D33	27	PL16	61	R45	82
C57	11	C111	1	XFS1	28	PL17	59	R47	75
C58	11	C112	1	H2	29	PL19	62	R48	83
C59	10	C113	1	IC1	30	PL20	63	R49	84
C65	4	C114	20	IC2	31	PL21	64	R54	75
C66	4	C115	2	IC3	32	Q1	65	R60	75
C67	12	C116	1	IC4	33	Q2	65	R63	82
C68	13	C117	2	IC14	31	Q3	65	R65	75
C69	12	C118	3	IC18	34	Q4	66	R67	77
C70	13	C119	2	IC19	35	Q5	66	R68	85

CE2AS0006

Figure 3. PCB Assy Motherboard (Sheets 3 of 4)

REF. DESIG.	ITEM NO.	REF. DESIG.	ITEM NO.	REF. DESIG.	ITEM NO.
R75	80	R141	80	R199	103
R76	80	R142	99	R200	91
R77	77	R143	98	R202	75
R78	86	R144	93	R203	75
R79	86	R145	80	R204	81
R80	86	R146	78	R205	77
R81	86	R147	75	R206	77
R82	87	R148	100	R207	77
R83	88	R149	101	R208	77
R84	87	R150	101	R209	77
R85	88	R151	80	R210	77
R87	89	R152	80	R211	75
R88	89	R155	81	R212	75
R89	89	R156	81	R213	75
R91	89	R157	85	R214	94
R93	90	R158	81	R215	80
R94	91	R159	102	R216	99
R95	90	R160	93	R217	85
R96	91	R161	99	R218	80
R97	77	R163	93	R219	80
R98	79	R164	99	R220	80
R100	92	R165	93	R221	80
R101	77	R166	93	R222	80
R102	79	R167	100	R223	80
R104	92	R168	100	R224	80
R107	75	R169	103	R225	80
R110	75	R170	83	R226	99
R111	78	R171	83	R227	78
R112	78	R174	75	R228	75
R113	93	R175	75	R229	94
R115	75	R177	75	RLA	105
R116	79	R178	100	RLB	105
R117	93	R179	75	RLC	105
R119	75	R180	80	RLD	105
R120	79	R181	79	RLE	106
R121	94	R186	90	RLF	107
R122	94	R187	90	RLG	107
R123	94	R188	75	RLH	108
R124	94	R189	104	S1	109
R125	95	R190	75	SK4	110
R126	95	R191	104	SK5	111
R128	96	R192	101	SK6	111
R129	97	R193	101	SK8	112
R135	85	R194	78	SK10	113
R136	80	R195	103	T1	114
R139	98	R196	91		
R140	93	R198	78		

CE2AS007

Figure 3. PCB Assy Motherboard (Sheet 4 of 4)



SECTION II (1) ITEM NO	(2) SMR CODE	(3) FSCM	TM11-6625-3232-24P (4) PART NUMBER	(5) DESCRIPTION AND USABLE ON CODE (UOC)	(6) QTY
GROUP 0101 MOTHERBOARD ASSEMBLY					
FIG. 3					
	PAHHH	21793	R-19-1145	MOTHERBOARD ASSY RPSTL FIGURE-3	1
1	PAHZZ	21793	R-21-0789	CAPACITOR FXD ELECT	24
2	PAHZZ	21793	R-21-1801	CAPACITOR	43
3	PAHZZ	21793	R-21-1800	CAPACITOR	5
4	PAHZZ	21793	R-21-1847	CAPACITOR	3
5	PAHZZ	21793	R-21-1808	CAPACITOR	12
6	PAHZZ	21793	R-21-7003	CAPACITOR RFI	1
7	PAHZZ	21793	R-21-7002	CAPACITOR RFI	2
8	PAHZZ	21793	R-21-0683	CAPACITOR FXD ELECT	1
9	PAHZZ	21793	R-21-0667	CAPACITOR FXD ELECT	1
10	PAHZZ	21793	R-21-0797	CAPACITOR	2
11	PAHZZ	21793	R-21-1838	CAPACITOR	3
12	PAHZZ	21793	R-21-1859	CAPACITOR	2
13	PAHZZ	21793	R-21-1862	CAPACITOR	2
14	PAHZZ	21793	R-21-1780	CAPACITOR	1
15	PAHZZ	21793	R-21-1782	CAPACITOR	1
16	PAHZZ	21793	R-21-1857	CAPACITOR	2
17	PAHZZ	21793	R-21-1802	CAPACITOR	1
18	PAHZZ	21793	100133	CAPACITOR FIXED CER	1
19	PAHZZ	21793	R-21-1858	CAPACITOR	1
20	PAHZZ	21793	R-21-0779	CAPACITOR FXD ELECT	3
21	PAHZZ	21793	R-22-1029	SEMICONDUCTOR DEVIC	11
22	PAHZZ	21793	R-22-1099	SEMICONDUCTOR DEVIC	2
23	PAHZZ	21793	R-22-1662	RECTIFIER SEMICONDU	1
24	PAHZZ	21793	R-22-1664	RECTIFIER SEMICONDU	1
25	PAHZZ	21793	210089	SEMICONDUCTOR DEVIC	8
26	PAHZZ	21793	R-22-1801	SEMICONDUCTOR DEVIC	2
27	PAHZZ	21793	R-22-1809	SEMICONDUCTOR DEVIC	2
28	PAHZZ	21793	R-23-0062	FUSEHOLDER	1
29	PAHZZ	21793	R-17-1035	HYBRID DAC	1
30	PAHZZ	21793	230750	MICROCIRCUIT DIGITA	1
31	PAHZZ	21793	230787	MICROCIRCUIT DIGITA	2
32	PAHZZ	21793	230200	MICROCIRCUIT LINEAR	1
33	PAHZZ	21793	230201	MICROCIRCUIT LINEAR	1
34	PAHZZ	21793	230790	MICROCIRCUIT	1
35	PAHZZ	21793	R-22-8307	MICROCIRCUIT DIGITA	1
36	PAHZZ	21793	230806	MICROCIRCUIT	2
37	PAHZZ	81349	M38510/30701BEB	MICROCIRCUIT ,DIGITA	1
38	PAHZZ	21793	230867	MICROCIRCUIT PROM	1
39	PAHZZ	21793	R-22-4807	MICROCIRCUIT	1
40	PAHZZ	21793	230561-001	MICROCIRCUIT DIGITA	1
41	PAHZZ	21793	230194	MICROCIRCUIT DIGITA	1
42	PAHZZ	21793	230428	MICROCIRCUIT DIGITA	1
43	PAHZZ	21793	230248	MICROCIRCUIT	1
44	PAHZZ	21793	230234	MICROCIRCUIT DIGITA	1
45	PAHZZ	21793	R-22-4700	MICROCIRCUIT	1
46	PAHZZ	21793	R-22-4262	MICROCIRCUIT LINEAR	1

SECTION II		TM11-6625-3232-24P				
(1)	(2)	(3)	(4)	(5)		(6)
ITEM	SMR		PART			
NO	CODE	FSCM	NUMBER	DESCRIPTION AND USABLE ON CODE (UOC)		QTY
47	PAHZZ	21793	R-22-4756	MICROCIRCUIT		1
48	PAHZZ	21793	R-22-4269	MICROCIRCUIT LINEAR		2
49	PAHZZ	21793	230735	MICROCIRCUIT		1
50	PAHZZ	21793	230789	MICROCIRCUIT DIGITA		1
51	PAHZZ	21793	230733	MICROCIRCUIT		1
52	PAHZZ	21793	R-23-7217	INDUCTOR CHOKE PWR		2
53	PAHZZ	21793	310151	COIL RADIO FREQUENC		8
54	PAHZZ	21793	310152	COIL WIDEBAND CHOKE		2
55	PAHZZ	21793	601195	CONNECTOR PLUG ELEC		2
56	PAHZZ	21793	600245	LEAD ELECTRICAL		2
57	PAHZZ	21793	601250	CONN ELECT PLUG		2
58	PAHZZ	21793	601208-013	CONNECTOR ELEC PLUG		1
59	PAHZZ	21793	601208-012	CONNECTOR ELEC PLUG		2
60	PAHZZ	21793	601208-016	CONNECTOR ELEC PLUG		1
61	PAHZZ	21793	601208-015	CONNECTOR ELEC PLUG		1
62	PAHZZ	21793	R-23-5176	CONN ELECT PLUG		1
63	PAHZZ	21793	R-23-5161	CONN ELECT PLUG		1
64	PAHZZ	21793	R-23-5168	CONN ELECT PLUG		1
65	PAHZZ	21793	R-22-6018	TRANSISTOR		3
66	PAHZZ	21793	200298	TRANSISTOR		6
67	PAHZZ	21793	200302	TRANSISTOR		1
68	PAHZZ	21793	R-22-6113	TRANSISTOR		3
69	PAHZZ	21793	200301	TRANSISTOR		2
70	PAHZZ	21793	R-22-6112	TRANSISTOR		2
71	PAHZZ	21793	R-22-6163	TRANSISTOR		2
72	PAHZZ	21793	R-22-6206	TRANSISTOR		4
73	PAHZZ	21793	200299	TRANSISTOR		3
74	PAHZZ	21793	R-22-4216	SEMICONDUCTOR DEVIC		1
75	PAHZZ	21793	R-20-5792	RESISTOR		28
76	PAHZZ	21793	R-20-5541	RESISTOR ARRAY		1
77	PAHZZ	21793	R-20-5787	RESISTOR		13
78	PAHZZ	21793	R-20-5771	RESISTOR		7
79	PAHZZ	21793	R-20-5765	RESISTOR		7
80	PAHZZ	21793	R-20-5768	RESISTOR		18
81	PAHZZ	21793	R-20-5799	RESISTOR		6
82	PAHZZ	21793	000391	RESISTOR FIXED COMP		2
83	PAHZZ	21793	000121	RESISTOR FIXED COMP		3
84	PAHZZ	21793	R-20-5556	RESISTOR NETWORK		1
85	PAHZZ	21793	R-20-5813	RESISTOR		4
86	PAHZZ	21793	001675	RESISTOR FIXED COMP		4
87	PAHZZ	21793	010990	RESISTOR FIXED FILM		2
88	PAHZZ	21793	010989	RESISTOR FIXED FILM		2
89	PAHZZ	21793	R-20-5554	RESISTOR NETWORK		4
90	PAHZZ	21793	R-20-5817	RESISTOR		4
91	PAHZZ	21793	R-20-5784	RESISTOR		4
92	PAHZZ	21793	R-20-5793	RESISTOR		2
93	PAHZZ	21793	R-20-5764	RESISTOR		8
94	PAHZZ	21793	R-20-5796	RESISTOR		6
95	PAHZZ	21793	R-20-5790	RESISTOR		2
96	PAHZZ	21793	R-20-5785	RESISTOR		1
97	PAHZZ	21793	R-20-5794	RESISTOR		1
98	PAHZZ	21793	000100	RESISTOR FIXED COMP		2

SECTION II		TM11-6625-3232-24P				
(1)	(2)	(3)	(4)	(5)		(6)
ITEM NO	SMR CODE	FSCM	PART NUMBER	DESCRIPTION AND USABLE ON CODE (UOC)		QTY
99	PAHZZ	21793	R-20-5780	RESISTOR		5
100	PAHZZ	21793	R-20-5797	RESISTOR		4
101	PAHZZ	21793	R-20-7071	RESISTOR VARIABLE N		4
102	PAHZZ	21793	R-20-5763	RESISTOR		1
103	PAHZZ	21793	R-20-5778	RESISTOR		3
104	PAHZZ	21793	R-20-5806	RESISTOR		2
105	PAHZZ	21793	R-23-7529	RELAY		4
106	PAHZZ	21793	R-23-7530	RELAY		1
107	PAHZZ	21793	R-23-7528	RELAY		2
108	PAHZZ	21793	R-23-7527	RELAY DPDT		1
109	PAHZZ	21793	R-23-4124	SWITCH POWER		1
110	PAHZZ	21793	920891	SOCKET PLUG-IN ELEC		2
111	PAHZZ	21793	601234	CONNECTOR ELEC BNC		2
112	PAHZZ	21793	R-23-5177	CONN ELECT SOCKET		1
113	PAHZZ	21793	R-23-3429	CONN ELECT SOCKET		1
114	PAHZZ	21793	R-17-4102	TRANSFORMER POWER		1
115	PAHZZ	21793	617042	NUT, PLAIN, HEXAGON		4
116	PAHZZ	21793	R-24-2801	WASHER, LOCK		6
117	PAHZZ	21793	616316	SCREW, MACHINE		6
118	XBHZZ	21793	500215	WIRE ELECT TEFLON		3
119	XBHZZ	21793	600191	LUG SOLDER		1
120	XBHZZ	21793	R-18-1254	BNC BOARD		1
121	XBHZZ	21793	520999	WIRE ELECT		70
122	XBHZZ	21793	520929	WIRE ELECT		70
123	XBHZZ	21793	500009	TUBING NONMETALLIC		40
124	XBHZZ	21793	520909	WIRE ELECT		70
125	XBHZZ	21793	R-24-3519	LUB TERMINAL AV		12
126	XBHZZ	21793	610851	INSULATOR PLATE		5
127	XBHZZ	21793	R-23-9148	BUSHING INSULATOR		2
128	PAHZZ	21793	230791	MICROCIRCUIT DIGITA		1
129	XBHZZ	21793	611059	SOCKET PLUG-IN ELEC		3
130	XBHZZ	21793	R-13-2038	INSULATOR		1
131	XBHZZ	21793	R-24-4146	STANDOFF		1
132	XBHZZ	21793	R-13-1988	SCREEN		1
133	XBHZZ	21793	617041	NUT METRIC HEX		4
134	XBHZZ	21793	R-24-2800	WASHER CRINKLE		4
135	XBHZZ	21793	616306	SCREW METRIC PAN HD		4
136	XBHZZ	21793	R-11-1706	CLAMP ASSY		1
137	XBHZZ	21793	R-13-2073	CLAMP		1
138	XBHZZ	21793	R-24-2247	FASTENER SELF-CL		1
139	PAHZZ	21793	R-24-2802	WASHER, LOCK		1
140	XBHZZ	21793	616344	SCREW METRIC PAN HD		1
141	PAHZZ	21793	R-20-5562	RESISTOR NETWORK		1
142	XBHZZ	21793	455117	HEATSINK		1
143	XAHZZ	21793	R-18-1145	PRINTED WIRING BD		1
144	XBHZZ	21793	R-24-2805	WASHER CRINKLE		3
145	XBHZZ	21793	616328	SCREW METRIC PAN HD		3

END OF FIGURE



CROSS-REFERENCE INDEXES

NATIONAL STOCK NUMBER INDEX

STOCK NUMBER	FIG	ITEM	STOCK NUMBER	FIG	ITEM
5905-00-107-0656	3	98			
5905-00-683-2236	3	82			
5920-01-011-2339	1	6			
5962-01-027-6863	3	44			
5962-01-050-0918	3	37			

## CROSS-REFERENCE INDEXES

## PART NUMBER INDEX

FSCM	PART NUMBER	STOCK NUMBER	FIG	ITEM
81349	M38510/30701BEB	5962-01-050-0918	3	27
21793	R-11-1592		2	1
21793	R-11-1593		2	21
21793	R-11-1603		2	15
21793	R-11-1623		2	42
21793	R-11-1643		2	4
21793	R-11-1706		3	136
21793	R-11-1728		1	13
21793	R-13-1972		2	40
21793	R-13-1976		1	10
21793	R-13-1988		3	132
21793	R-13-2024		2	6
21793	R-13-2038		3	130
21793	R-13-2073		3	137
21793	R-13-2102		2	24
21793	R-15-0672		1	9
21793	R-15-0674		2	2
21793	R-15-0693		2	5
21793	R-17-1035		3	29
21793	R-17-1038		2	25
21793	R-17-4102		3	114
21793	R-18-1145		3	143
21793	R-18-1239		2	3
21793	R-18-1254		3	120
21793	R-19-1141		2	37
21793	R-19-1142		2	34
21793	R-19-1145		3	
21793	R-19-1206		2	27
21793	R-20-5541		3	76
21793	R-20-5554		3	89
21793	R-20-5556		3	84
21793	R-20-5562		3	141
21793	R-20-5763		3	102
21793	R-20-5764		3	93
21793	R-20-5765		3	79
21793	R-20-5768		3	80
21793	R-20-5771		3	78
21793	R-20-5778		3	103
21793	R-20-5780		3	99
21793	R-20-5784		3	91
21793	R-20-5785		3	96
21793	R-20-5787		3	77
21793	R-20-5790		3	95
21793	R-20-5792		3	75
21793	R-20-5793		3	92
21793	R-20-5794		3	97
21793	R-20-5796		3	94
21793	R-20-5797		3	100
21793	R-20-5799		3	81
21793	R-20-5806		3	104
21793	R-20-5813		3	85

## CROSS-REFERENCE INDEXES

## PART NUMBER INDEX

FSCM	PART NUMBER	STOCK NUMBER	FIG	ITEM
21793	R-20-5817		3	90
21793	R-20-7071		3	101
21793	R-21-0667		3	9
21793	R-21-0683		3	8
21793	R-21-0779		3	20
21793	R-21-0789		3	1
21793	R-21-0797		3	10
21793	R-21-1780		3	14
21793	R-21-1782		3	15
21793	R-21-1800		3	3
21793	R-21-1801		3	2
21793	R-21-1802		3	17
21793	R-21-1808		3	5
21793	R-21-1838		3	11
21793	R-21-1847		3	4
21793	R-21-1857		3	16
21793	R-21-1858		3	19
21793	R-21-1859		3	12
21793	R-21-1862		3	13
21793	R-21-7002		3	7
21793	R-21-7003		3	6
21793	R-22-1029		3	21
21793	R-22-1099		3	22
21793	R-22-1662		3	23
21793	R-22-1664		3	24
21793	R-22-1801		3	26
21793	R-22-1809		3	27
21793	R-22-4216		3	74
21793	R-22-4262		3	46
21793	R-22-4269		3	48
21793	R-22-4700		3	45
21793	R-22-4756		3	47
21793	R-22-4807		3	39
21793	R-22-6018		3	65
21793	R-22-6112		3	70
21793	R-22-6113		3	68
21793	R-22-6163		3	71
21793	R-22-6206		3	72
21793	R-22-8307		3	35
21793	R-23-0062		3	28
21793	R-23-0063		1	5
21793	R-23-0066		1	4
21793	R-23-3421		2	26
21793	R-23-3429		3	113
21793	R-23-4124		3	109
21793	R-23-5161		3	63
21793	R-23-5168		3	64
21793	R-23-5176		3	62
21793	R-23-5177		3	112
21793	R-23-7217		3	52
21793	R-23-7527		3	108

## CROSS-REFERENCE INDEXES

## PART NUMBER INDEX

FSCM	PART NUMBER	STOCK NUMBER	FIG	ITEM
21793	R-23-7528		3	107
21793	R-23-7529		3	105
21793	R-23-7530		3	106
21793	R-23-9148		3	127
21793	R-24-0146		1	14
21793	R-24-0187		2	33
21793	R-24-0244		2	32
21793	R-24-0245		2	35
21793	R-24-0250		2	39
21793	R-24-2247		3	138
21793	R-24-2800		3	134
21793	R-24-2801		1	8
			2	7
			3	116
21793	R-24-2802		3	139
21793	R-24-2805		3	144
21793	R-24-2816		1	12
21793	R-24-3519		3	125
21793	R-24-4146		3	131
21793	R-24-5835		1	15
21793	R-24-6127		2	23
21792	R-24-7042		2	41
21793	R-24-7543		1	11
21793	R-24-7822		2	36
21793	R-25-5202		2	9
21793	000100	5905-00-107-0656	3	98
21793	000121		3	83
21793	000391	5905-00-683-2236	3	82
21793	001675		3	86
21793	010989		3	88
21793	010990		3	87
21793	100133		3	18
21793	200298		3	66
21793	200299		3	73
21793	200301		3	69
21793	200302		3	67
21793	210089		3	25
21793	230194		3	41
21793	230200		3	32
21793	230201		3	33
21793	230234	5962-01-027-6863	3	44
21793	230248		3	43
21793	230428		3	42
21793	230561-001		3	40
21793	230733		3	51
21793	230735		3	49
21793	230750		3	30
21793	230787		3	31
21793	230789		3	50
21793	230790		3	34
21793	230791		3	128



## CROSS-REFERENCE INDEXES

## PART NUMBER INDEX

FSCM	PART NUMBER	STOCK NUMBER	FIG	ITEM
21793	230806		3	36
21793	230867		3	38
21793	310151		3	53
21793	310152		3	54
21793	401820		2	14
21793	401822		2	31
21793	404386		2	30
21793	404506		2	
21793	404574		2	13
21793	404686		1	1
21793	455110		2	29
21793	455112		2	18
21793	455117		3	142
21793	500009		3	123
21793	500023		2	28
21793	500215		3	118
21793	520909		3	124
21793	520929		3	122
21793	520999		3	121
21793	600191		3	119
21793	600245		3	56
21793	600620		1	2
21793	601195		3	55
21793	601208-012		3	59
21793	601208-013		3	58
21793	601208-015		3	61
21793	601208-016		3	60
21793	601234		3	111
21793	601250		3	57
21793	610851		3	126
21793	610949		1	16
21793	611059		3	129
21793	611072		2	38
21793	611153		2	12
21793	611154		2	10
21793	616306		3	135
21793	616315		1	7
			2	8
21793	616316		2	11
			3	117
21793	616328		3	145
21793	616344		3	140
21793	617041		3	133
21793	617042		2	22
			3	115
21793	617044		2	20
21793	617077		2	17
21793	630010		2	16
21793	920204	5920-01-011-2339	1	6
21793	920756		1	3
21793	920891		3	110

CROSS-REFERENCE INDEXES

PART NUMBER INDEX

FSCM	PART NUMBER	STOCK NUMBER	FIG	ITEM
21793	921065		2	19
21793	921137		1	17

## CROSS-REFERENCE INDEXES

FIG	ITEM	FIGURE AND ITEM NUMBER INDEX		PART NUMBER
		STOCK NUMBER	FSCM	
1	1		21793	404686
1	2		21793	600620
1	3		21793	920756
1	4		21793	R-23-0066
1	5		21793	R-23-0063
1	6	5920-01-011-2339	21793	920204
1	7		21793	616315
1	8		21793	R-24-2801
1	9		21793	R-15-0672
1	10		21793	R-13-1976
1	11		21793	R-24-7543
1	12		21793	R-24-2816
1	13		21793	R-11-1728
1	14		21793	R-24-0146
1	15		21793	R-24-5835
1	16		21793	610949
1	17		21793	921137
2			21793	404506
2	1		21793	R-11-1592
2	2		21793	R-15-0674
2	3		21793	R-18-1239
2	4		21793	R-11-1643
2	5		21793	R-15-0693
2	6		21793	R-13-2024
2	7		21793	R-24-2801
2	8		21793	616315
2	9		21793	R-25-5202
2	10		21793	611154
2	11		21793	616316
2	12		21793	611153
2	13		21793	404574
2	14		21793	401820
2	15		21793	R-11-1603
2	16		21793	630010
2	17		21793	617077
2	18		21793	455112
2	19		21793	921065
2	20		21793	617044
2	21		21793	R-11-1593
2	22		21793	617042
2	23		21793	R-24-6127
2	24		21793	R-13-2102
2	25		21793	R-17-1038
2	26		21793	R-23-3421
2	27		21793	R-19-1206
2	28		21793	500023
2	29		21793	455110
2	30		21793	404386
2	31		21793	401822
2	32		21793	R-24-0244
2	33		21793	R-24-0187

## CROSS-REFERENCE INDEXES

FIG	ITEM	FIGURE AND ITEM NUMBER INDEX		PART NUMBER
		STOCK NUMBER	FSCM	
2	34		21793	R-19-1142
2	35		21793	R-24-0245
2	36		21793	R-24-7822
2	37		21793	R-19-1141
2	38		21793	611072
2	39		21793	R-24-0250
2	40		21793	R-13-1972
2	41		21792	R-24-7042
2	42		21793	R-11-1623
3			21793	R-19-1145
3	1		21793	R-21-0789
3	2		21793	R-21-1801
3	3		21793	R-21-1800
3	4		21793	R-21-1847
3	5		21793	R-21-1808
3	6		21793	R-21-7003
3	7		21793	R-21-7002
3	8		21793	R-21-0683
3	9		21793	R-21-0667
3	10		21793	R-21-0797
3	11		21793	R-21-1838
3	12		21793	R-21-1859
3	13		21793	R-21-1862
3	14		21793	R-21-1780
3	15		21793	R-21-1782
3	16		21793	R-21-1857
3	17		21793	R-21-1802
3	18		21793	100133
3	19		21793	R-21-1858
3	20		21793	R-21-0779
3	21		21793	R-22-1029
3	22		21793	R-22-1099
3	23		21793	R-22-1662
3	24		21793	R-22-1664
3	25		21793	210089
3	26		21793	R-22-1801
3	27		21793	R-22-1809
3	28		21793	R-23-0062
3	29		21793	R-17-1035
3	30		21793	230750
3	31		21793	230787
3	32		21793	230200
3	33		21793	230201
3	34		21793	230790
3	35		21793	R-22-8307
3	36		21793	230806
3	37	5962-01-050-0918	81349	M38510/30701BEB
3	38		21793	230867
3	39		21793	R-22-4807
3	40		21793	230561-001
3	41		21793	230194

## CROSS-REFERENCE INDEXES

FIG	ITEM	FIGURE AND ITEM NUMBER INDEX		PART NUMBER
		STOCK NUMBER	FSCM	
3	42		21793	230428
3	43		21793	230248
3	44	5962-01-027-6863	21793	230234
3	45		21793	R-22-4700
3	46		21793	R-22-4262
3	47		21793	R-22-4756
3	48		21793	R-22-4269
3	49		21793	230735
3	50		21793	230789
3	51		21793	230733
3	52		21793	R-23-7217
3	53		21793	310151
3	54		21793	310152
3	55		21793	601195
3	56		21793	600245
3	57		21793	601250
3	58		21793	601208-013
3	59		21793	601208-012
3	60		21793	601208-016
3	61		21793	601208-015
3	62		21793	R-23-5176
3	63		21793	R-23-5161
3	64		21793	R-23-5168
3	65		21793	R-22-6018
3	66		21793	200298
3	67		21793	200302
3	68		21793	R-22-6113
3	69		21793	200301
3	70		21793	R-22-6112
3	71		21793	R-22-6163
3	72		21793	R-22-6206
3	73		21793	200299
3	74		21793	R-22-4216
3	75		21793	R-20-5792
3	76		21793	R-20-5541
3	77		21793	R-20-5787
3	78		21793	R-20-5771
3	79		21793	R-20-5765
3	80		21793	R-20-5768
3	81		21793	R-20-5799
3	82	5905-00-683-2236	21793	000391
3	83		21793	000121
3	84		21793	R-20-5556
3	85		21793	R-20-5813
3	86		21793	001675
3	87		21793	010990
3	88		21793	010989
3	89		21793	R-20-5554
3	90		21793	R-20-5817
3	91		21793	R-20-5784
3	92		21793	R-20-5793

## CROSS-REFERENCE INDEXES

FIG	ITEM	FIGURE AND ITEM NUMBER INDEX		PART NUMBER
		STOCK NUMBER	FSCM	
3	93		21793	R-20-5764
3	94		21793	R-20-5796
3	95		21793	R-20-5790
3	96		21793	R-20-5785
3	97		21793	R-20-5794
3	98	5905-00-107-0656	21793	000100
3	99		21793	R-20-5780
3	100		21793	R-20-5797
3	101		21793	R-20-7071
3	102		21793	R-20-5763
3	103		2193	R-20-5778
3	104		21793	R-20-5806
3	105		21793	R-23-7529
3	106		21793	R-23-7530
3	107		21793	R-23-7528
3	108		21793	R-23-7527
3	109		21793	R-23-4124
3	110		21793	920891
3	111		21793	601234
3	112		21793	R-23-5177
3	113		21793	R-23-3429
3	114		21793	R-17-4102
3	115		21793	617042
3	116		21793	R-24-2801
3	117		21793	616316
3	118		21793	500215
3	119		21793	600191
3	120		21793	R-18-1254
3	121		21793	520999
3	122		21793	520929
3	123		21793	500009
3	124		21793	520909
3	125		21793	R-24-3519
3	126		21793	610851
3	127		21793	R-23-9148
3	128		21793	230791
3	129		21793	611059
3	130		21793	R-13-2038
3	131		21793	R-24-4146
3	132		21793	R-13-1988
3	133		21793	617041
3	134		21793	R-24-2800
3	135		21793	616306
3	136		21793	R-11-1706
3	137		21793	R-13-2073
3	138		21793	R-24-2247
3	139		21793	R-24-2802
3	140		21793	616344
3	141		21793	R-20-5562
3	142		21793	455117
3	143		21793	R-18-1145

CROSS-REFERENCE INDEXES

FIG	ITEM	FIGURE AND ITEM NUMBER INDEX		PART NUMBER
		STOCK NUMBER	FSCM	
3	144		21793	R-24-2805
3	145		21793	616328





RECOMMENDED CHANGES TO EQUIPMENT TECHNICAL PUBLICATIONS



THEN... JOT DOWN THE DOPE ABOUT IT ON THIS FORM. CAREFULLY TEAR IT OUT, FOLD IT AND DROP IT IN THE MAIL!

SOMETHING WRONG WITH THIS PUBLICATION?

FROM (PRINT YOUR UNIT'S COMPLETE ADDRESS)

Commander  
Stateside Army Depot  
ATTN: AMSTA-US  
Stateside, N.J. 07703-5007

DATE SENT

10 July 1975

PUBLICATION NUMBER

TM 11-5840-340-20P

PUBLICATION DATE

23 Jan 78

PUBLICATION TITLE

Radar Set AN/PRC-76

BE EXACT PIN-POINT WHERE IT IS

PAGE NO	PARA-GRAPH	FIGURE NO	TABLE NO
33			
44		19	
45			

IN THIS SPACE TELL WHAT IS WRONG AND WHAT SHOULD BE DONE ABOUT IT:

For item 2, change the NSN to read: 5835-00-134-9186.  
Reason: Accuracy.

Identify the cover on the junction box (item no. 5).  
Reason: It is a separate item and is not called out on figure 19.

Add the cover of the junction box as an item in the listing for figure 19.  
Reason: Same as above

S A M P L E

PRINTED NAME, GRADE OR TITLE AND TELEPHONE NUMBER

SSG I. M. DeSpirit of 999-1776

SIGN HERE

TEAR ALONG PERFORATED LINE

FILL IN YOUR  
UNIT'S ADDRESS

FOLD BACK

DEPARTMENT OF THE ARMY

\_\_\_\_\_  
\_\_\_\_\_  
\_\_\_\_\_

POSTAGE AND FEES PAID  
DEPARTMENT OF THE ARMY  
DOD 314



OFFICIAL BUSINESS  
PENALTY FOR PRIVATE USE \$300

**SAMPLE**

Commander  
US Army Communications-Electronics Command  
and Fort Monmouth  
ATTN: ANSEL-LC-ME-PS  
Fort Monmouth, New Jersey 07703-5000

TEAR ALONG PERFORATED LINE

RECOMMENDED CHANGES TO EQUIPMENT TECHNICAL PUBLICATIONS



**SOMETHING WRONG WITH THIS PUBLICATION?**

THEN...JOT DOWN THE DOPE ABOUT IT ON THIS FORM. CAREFULLY TEAR IT OUT, FOLD IT AND DROP IT IN THE MAIL.

FROM: (PRINT YOUR UNIT'S COMPLETE ADDRESS)

DATE SENT

PUBLICATION NUMBER

TM 11-6625-3232-24P

PUBLICATION DATE

15 Feb 1989

PUBLICATION TITLE

Digital Electronic Counter  
AN/USM-459A

BE EXACT PIN-POINT WHERE IT IS

PAGE NO.	PARA-GRAPH	FIGURE NO.	TABLE NO.

IN THIS SPACE TELL WHAT IS WRONG AND WHAT SHOULD BE DONE ABOUT IT:

TEAR ALONG PERFORATED LINE

PRINTED NAME GRADE OR TITLE AND TELEPHONE NUMBER

SIGN HERE

FILL IN YOUR  
UNIT'S ADDRESS

FOLD BACK

DEPARTMENT OF THE ARMY

\_\_\_\_\_  
\_\_\_\_\_

OFFICIAL BUSINESS  
PENALTY FOR PRIVATE USE \$300

POSTAGE AND FEES PAID  
DEPARTMENT OF THE ARMY  
DOD 314



TEAR ALONG SEPARATED LINE

Commander  
US Army Communications-Electronics Command  
and Fort Monmouth  
ATTN: AMSEL-LC-ME-PS  
Fort Monmouth, New Jersey 07703-5000



FILL IN YOUR  
UNIT'S ADDRESS

FOLD BACK

DEPARTMENT OF THE ARMY

\_\_\_\_\_  
\_\_\_\_\_

OFFICIAL BUSINESS  
PENALTY FOR PRIVATE USE \$300

POSTAGE AND FEES PAID  
DEPARTMENT OF THE ARMY  
DOD 314



TEAR ALONG PERFORATED LINE

Commander  
US Army Communications-Electronics Command  
and Fort Monmouth  
ATTN: AMSEL-LC-ME-PS  
Fort Monmouth, New Jersey 07703-5000



FILL IN YOUR  
UNIT'S ADDRESS

FOLD BACK

DEPARTMENT OF THE ARMY

\_\_\_\_\_  
\_\_\_\_\_

OFFICIAL BUSINESS  
PENALTY FOR PRIVATE USE \$300

POSTAGE AND FEES PAID  
DEPARTMENT OF THE ARMY  
DOD 314



TEAR ALONG PERFORATED LINE

Commander  
US Army Communications-Electronics Command  
and Fort Monmouth  
ATTN: AMSEL-LC-ME-PS  
Fort Monmouth, New Jersey 07703-5000



**By Order of the Secretary of the Army:**

**official:**

**CARL E. VUONO**  
*General, United States Army*  
*Chief of Staff*

**WILLIAM J. MEEHAN II**  
*Brigadier General, United States Army*  
*The Adjutant General*

**DISTRIBUTION:**

To be distributed in accordance with DA Form 12-36 unit and DS/GS requirements for AN/USM-459.





