

DEPARTMENT OF THE ARMY TECHNICAL MANUAL

**ORGANIZATIONAL MAINTENANCE REPAIR PARTS
AND SPECIAL TOOLS LISTS
RADIO SETS AN/GRC-26A, AN/GRC-26B, AND AN/GRC-26C
AND
RADIO TELETYPEWRITER CONTROLS C-808/GRC-26A AND
C-808A/GRC-26A FSN 5815-709-0638**

**Headquarters, Department of the Army, Washington, D.C.
31 July 1973**

Current as of January 1973

	Paragraph	Page
Section I.	INTRODUCTION	
	Scope	Text
	General	Text
	Explanation of columns	Text
	Special information	Text
	Location of repair parts	Text
	Abbreviations (Not applicable)	Text
	Reporting of equipment publication improvements	Text
II.	PRESCRIBED LOAD ALLOWANCE (Not applicable)	
III.	REPAIR PARTS LIST	6
Group 0001	Radio Set AN/GRC-26A, B, C	6
0002	Radio Teletypewriter Control C-808/GRC-26A	8
IV.	SPECIAL TOOLS, TEST AND SUPPORT EQUIPMENT (Not applicable)	
V.	INDEX—FEDERAL STOCK NUMBER AND REFERENCE NUMBER CROSS-REFERENCE TO FIGURE AND ITEM NUMBER	9

*This manual supersedes TM 11-5820-202-20P, 4 December 1958, including all changes.

SECTION I

INTRODUCTION

1 - 1 . S c o p e

This manual lists repair parts and special tools required for the performance of organizational maintenance of the AN/GRC-26A, AN/GRC-26B, AN/GRC-26C, C-808/GRC-26A, and C-808A/GRC-26A. The PCCN for the AN/GRC-26A, B, and C is GCRAAE for all models. The PCCN for the C-808/GRC-26A, -808A is GCRAHT for all models.

1 - 2 . G e n e r a l

This repair parts and special tools list is divided into the following sections:

a. *Prescribed Load Allowance (PLA)*—Section II. Not applicable.

b. *Repair Parts List*—Section III. A list of repair parts authorized for the performance of maintenance at the organizational level. This repair parts list is arranged in alphabetical order.

c. *Special Tools, Test and Support Equipment*—Section IV. Not applicable.

d. *Index—Federal Stock Number and Reference Number Cross-Reference to Figure and Item Number*—Section V. A list, in ascending numerical sequence, of all Federal stock numbers appearing in the listings, followed by a list, in alphabetic sequence, of all reference numbers appearing in the listings. Federal stock number and reference numbers are cross-referenced to each illustration figure and item number or reference designation appearance.

1-3. Explanation of Columns

The following provides an explanation of columns in the tabular lists—

a. *Source, Maintenance, and Recoverability Codes (SMR).*

(1) *Source code.* Indicates the manner of acquiring support items for maintenance, repair, or overhaul of end items. Source codes are—

<i>Code</i>	<i>Explanation</i>
PA	Item procured and stocked for anticipated or known usage.
PB	Item procured and stocked for insurance purposes because essentiality dictates that a minimum quantity be available in the supply systems.
PC	Item procured and stocked and which otherwise would be coded PA except that it is deteriorative in nature.
PD	Support item, excluding support equipment.

<i>Code</i>	<i>Explanation</i>
	procured for initial issue or outfitting and stocked only for subsequent or additional initial issues or outfittings. Not subject to automatic replenishment.
PE	Support equipment procured and stocked for initial issue or outfitting to specified maintenance repair activities.
PF	Support equipment which will not be stocked but which will be centrally procured on demand.
PG	Item procured and stocked to provide for sustained support for the life of the equipment. It is applied to an item peculiar to the equipment which because of probable discontinuance or shutdown of production facilities would prove uneconomical to reproduce at a later time.
KD	An item of depot overhaul/repair kit and not purchased separately. Depot kit defined as a kit that provides items required at the time of overhaul or repair.
KF	An item of a maintenance kit and not purchased separately. Maintenance kit defined as a kit that provides an item that can be replaced at organizational or direct support or general support levels of maintenance.
KB	Item included in both a depot overhaul/repair kit and a maintenance kit.
MO	Item to be manufactured or fabricated at or-
MF	Item to be manufactured or fabricated at direct support maintenance level.
MH	Item to be manufactured or fabricated at general support maintenance level.
MD	Item to be manufactured or fabricated at depot maintenance level.
AO	Item to be assembled at organizational level.
AF	Item to be assembled at direct support maintenance level.
AH	Item to be assembled at general support maintenance level.
AD	Item to be assembled at depot maintenance level.
ZA	Item is not procured or stocked because the requirements for the item will result in the replacement of the next higher assembly.
XB	Item is not procured or stocked. If not available through salvage, requisition.
XC	Installation drawing, diagram instruction

Code	Explanation
	sheet, field service drawing, that is identified by manufacturers' part number.

XD — Support items can be requisitioned with justification.

NOTE

Cannibalization or salvage may be used as a source of supply for any items source coded above except those coded XA and aircraft support items as restricted by AR 700-42.

(2) *Maintenance code.* Maintenance codes are assigned to indicate the levels of maintenance authorized to USE and REPAIR support items. The maintenance codes are entered in the third and fourth positions of the Uniform SMR Code Format as follows—

(a) *Use (third position).* The maintenance code entered in the third position indicates the lowest maintenance level authorized to remove, replace, and use the support item. The maintenance code entered in the third position indicates one of the following levels of maintenance.

Code	Application/Explanation
O —	Support item is removed, replaced, used at the organizational level of maintenance.

NOTE

A code "C" may be used in this position to denote crew or operator maintenance performed within organizational maintenance.

F —	Support item is removed, replaced, used at the direct support maintenance level.
H —	Support item is removed, replaced, used at the general support maintenance.
D —	Support items that are removed, replaced, used at depot only.

(b) *Repair (fourth position).* The maintenance code entered in the fourth position indicates whether the item is to be repaired and identifies the lowest maintenance level with the capability to perform complete repair (i.e., all authorized maintenance functions). When a maintenance code is not used a dash (-) sign is entered. For multi-service equipment/systems or when a code is entered, this position will contain one of the following maintenance codes as assigned by the service(s) that require the code—

Code	Application/Explanation
O —	The lowest maintenance level capable of complete repair of the support item is the organizational level.
F —	The lowest maintenance level capable of com-

Code	Application/Explanation
	plete repair of the support item is direct support.
H	The lowest maintenance level capable of complete repair of the support item is general support.
D —	The lowest maintenance level capable of complete repair of the support item is the depot level.
E —	Repair restricted to designated Specialized Repair Activity.
Z	Non-repairable. No repair is authorized.
B	No repair is authorized. The item may be reconditioned by adjusting, lubricating, etc., at the user level. No parts or special tools are procured for the maintenance of this item.

(3) *Recoverability code.* Recoverability codes are assigned to support items to indicate the disposition action on unserviceable items. The recoverability code is entered in the fifth position of the uniform SMR Code Format as follows —

Code	Explanation
Z —	Nonrepairable item. When unserviceable, condemn and dispose at the level indicated in the first digit of the maintenance code.
O —	Repairable item. When uneconomically repairable, condemn and dispose at organizational level.
F —	Repairable item. When uneconomically repairable, condemn and dispose at the direct support level.
H —	Repairable item. When uneconomically repairable, condemn and dispose at the general support level.
D —	Repairable item. When beyond lower level repair capability, return to depot. Condemnation and disposal not authorized below depot level.
L —	Repairable item. Repair, condemnation, and disposal not authorized below depot/Specialized Repair Activity level.
A —	Item requires special handling or condemnation procedures because of specific reasons (i.e., precious metal content, high dollar value, critical material or hazardous material).

b. Federal Stock Number. Indicates the Federal stock number assigned to the item and will be used for requisitioning purposes.

c. Description. Indicates the Federal item name and a minimum description required to identify the item. The last line indicates the reference number followed by the applicable Federal Supply Code for

Manufacturer (FSCM) in parentheses. The FSCM is used as an element in item identification to designate manufacturer or distributor or Government agency, etc., and is identified in SB 708-42.

d. Unit of Measure (U/M). Indicates the standard or basic quantity by which the listed item is used in performing the actual maintenance function. This measure is expressed by a two-character alphabetical abbreviation; e.g., ea, in, pr, etc., and is the basis used to indicate quantities and allowances in subsequent columns. When the unit of measure differs from the unit of issue, the lowest unit of issue that will satisfy the required units of measure will be requisitioned.

e. Quantity Incorporated in Unit. This column indicates the quantity of the item used in the equipment.

f. 15-Day Organizational Maintenance Allowance.

(1) The repair parts indicated by an asterisk in the allowance column represent those authorized for use at the Organizational category, and will be requisitioned on an "as required" basis, until stockage is based on demand in accordance with AR 710-2.

(2) Major Army commanders are authorized to approve reduction in the range of support items authorized for use in units within their commands. Recommendations for increase in range of items authorized for use will be forwarded to Command-er, US Army Electronics Command, ATTN: AMSEL-

MA- Fort Monmouth, N.J., 07703. Any changes approved will be reflected in a revision to the RPSTI.

(3) Allowance quantities are indicated in the special tools list section for special tools, TMDE, and other equipment.

g. Illustration. This column is divided as follows:

(1) *Figure number.* Not applicable.

(2) *Item number.* Indicates the item number or reference designation used to reference the item.

1-4. Special Information

a. Usable on codes are included in column 3. Uncoded items are applicable to all models. Identification of the usable on codes used in this publication are—

<i>Code</i>	<i>Used on</i>
ACF	AN/GRC-26A
ACG	AN/GRC-26B
ACH	AN/GRC-26C
BMC	C-808/GRC-26A (Barker and Williamson Order)
BMD	C-808/GRC-26A
BME	C-808A/GRC-26A

} (Halicrafters Orders
1908-PH-51, 3131-
PH-51, and 3357-
PH-52)

b. The following publications pertain to the equipments and their components:

SIG 7 & 8 CY-1216/U
SIG 7 & 8 0-39/TRA-7
SIG 7 & 8 0-41/TRA-7
SIG 7 & 8 S-69/GRC
SIG 7 & 8 TU-47
SIG 7 & 8 TU-48
SIG 7 & 8 TU-49
SIG 7 & 8 TU-50
SIG 7 & 8 TU-51
SIG 7 & 8 TU-52
SIG 7 & 8 TU-53
SIG 7 & 8 TU-54
TM 11-809-10

TM 11-809-20

TM 11-5820-217-10P

TM 11-5820-217-20P

Electrical Equipment Cabinet CY-1216/U.

Frequency Shift Exciter 0-39/TRA-7, 0-39A, B, C/TRA-7.

Oscillator 0-41/TRA-7, 0-41A/TRA-7.

Shelter S-69/GRC.

Transmitter Tuning Unit TU-47.

Transmitter Tuning Unit TU-48.

Transmitter Tuning Unit TU-49.

Transmitter Tuning Unit TU-50.

Transmitter Tuning Unit TU-51.

Transmitter Tuning Unit TU-52.

Transmitter Tuning Unit TU-53.

Transmitter Tuning Unit TU-54.

Operator's Manual: Radio Transmitters T-368/URT, T-368A/URT, T-368B/URT, T-368C/URT, T-368D/URT, and T-368E/URT; Antenna Tuning Unit BC-939-B; Radio Frequency Tuner TN-339/GR; and Standing Wave Ratio-Power Meter ME-165/G.

Organizational Maintenance: Radio Transmitter T-368/URT, T-368A/URT, T-368B/URT, T-368C/URT, T-368D/URT, and T-368E/URT; Antenna Tuning Unit BC-939-B; Radio Frequency Tuner TN-339/GR; and Standing Wave Ratio-Power Meter ME-165/G.

Operator's Maintenance Repair Parts and Special Tools List: Power Supplies PP-712/GRC-26A and PP-712A/GRC-26A.

Organizational Maintenance Repair Parts and Special Tools List and Maintenance Allocation Chart: Power Supplies PP-712/GRC-26A and PP-712A/GRC-26A.

TM 11-5820-251-2P

TM 11-5820-251-10P

TM 11-5820-251-20P

Operator and Organizational Maintenance Repair Parts and Special Tools List and Maintenance Allocation Chart: Radio Set Control Group AN/GRA-14.

Basic Issue Items List: Masts AB-155/U, AB-155A/U, and AB-155B/U.

Organizational Maintenance Repair Parts and Special Tools List and Maintenance Allocation Chart: Masts AB-155/U, AB-155A/U, and AB-155B/U.

1-5. Location of Repair Parts

a. This manual contains one cross-reference index (sec V) to be used to locate a repair part when either the Federal stock number or reference number (manufacturer's part number) is known. The first column in the index is prepared in numerical or alphanumeric sequence in ascending order. The reference numbers (manufacturer's part numbers) are listed immediately following the last listed Federal stock number in the index of Federal stock numbers.

b. When the Federal stock number or reference number is known, follow the procedures given in (1) and (2) below.

(1) Refer to the index of Federal stock numbers (sec V) and locate the Federal stock number or reference number. The FSN and reference number are cross-referenced to the applicable figure and item number or reference designation.

(2) Refer to the repair parts list (sec III) and locate the figure number (col 7a) and item number or reference designation (col 7b) as noted in the FSN index.

c. When the figure and item number or reference designation are known, scrutinize columns 7a and 7b of the repair parts list (sec III) until the item is located.

d. When the FSN, reference number, figure number, item number and reference designation are not known, scrutinize column 3 of the repair parts list (sec III), which is arranged in alphabetical order.

1-6. Abbreviations

Not applicable.

1-7. Reporting of Equipment Publication Improvements

The reporting of errors, omissions, and recommendations for improving this publication by the individual user is encouraged. Reports should be submitted on DA Form 2028 (Recommended Changes to Publications) and forwarded direct to Commander, US Army Electronics Command, ATTN: AMSEL-MA-CR, Fort Monmouth, N.J., 07703.

SECTION III

TM11-5820-202-20P

(1) SMR CODE	(2) FEDERAL STOCK NUMBER	(3) DESCRIPTION	(4) UNIT OF MEAS	(5) QTY. INC IN UNIT	(6) 15-DAY ORGANIZATIONAL MAINTENANCE ALW				(7) ILLUSTRATION	
					(a) 1-5	(b) 6-20	(c) 21-50	(d) 51-100	(e) FIGURE NO.	(f) ITEM NO.
PAOZZ	5820-497-8705	GROUP COOL RADIO SET AM/GRC-25A, B, C BRACKET NO-REF-DESIG MAST BRACKET	EA	2	*	*	*	*		
PAOZZ	5820-404-2718	9P50 (99170) ACF BRACKET NO-REF-DESIG MAST BRACKET	EA	2	*	*	*	*		
PAOZZ	5805-356-3548	9P50A (99176) ACF,ACG,ACH BRACKET NO-REF-DESIG T SHAPE HOLDS.....	EA	2	*	*	*	*		
PAOZZ	5820-497-8596	TELEPHONE EEB ICC28020 (80063) ACF,ACG,ACH BRACKET NO-REF-DESIG.....	EA	1	*	*	*	*		
PAOZZ	6145-542-6809	IT657GRC (80058) ACF,ACG,ACH IRATIO, WIRE NO-REF-DESIG TINNED COPPER 3-16..	FT	15	*	*	*	*		
PAOZZ	6145-241-1770	IN 10 I230 (92194) ACF,ACG,ACH IRATIO, WIRE NO-REF-DESIG TINNED COPPER 1 IN W	FT	9	*	*	*	*		
PAOZZ	7920-291-5812	(0-047 THK I049 (70903) ACF,ACG,ACH BRUSH, CLEANING NO-REF-DESIG 8 IN LG	EA	1	*	*	*	*		
PAOZZ	5995-164-7902	I211A (89208) ACF,ACG,ACH ABLE ASSEMBLY, POWER, ELECTRICAL W108 4 FT...	EA	1	*	*	*	*		W108
PAOZZ	5995-164-7692	ICC34601 (80063) ACF,ACG,ACH ABLE ASSEMBLY, POWER, ELECTRICAL W1 13 FT..	EA	1	*	*	*	*		W1
PAOZZ	5995-170-7943	ID763 (80058) ACF,ACG,ACH ABLE ASSEMBLY, POWER, ELECTRICAL W2 POWER..	EA	2	*	*	*	*		W2
PAOZZ	5995-170-7929	IX1165U (80053) ACF,ACG,ACH ABLE ASSEMBLY, POWER, ELECTRICAL W3 POWER..	EA	2	*	*	*	*		W3
PAOZZ	5995-170-8780	IX1166U (80058) ACF,ACG,ACH ABLE ASSEMBLY, POWER, ELECTRICAL NO-REF-DESIG.	EA	2	*	*	*	*		
PAOZZ	5995-170-8773	PECIAL PURPOSE CABLE ASSEMBLY 3-10-1-2 IX1200U (80058) ACF,ACG,ACH ABLE ASSEMBLY, POWER, ELECTRICAL NO-REF-DESIG.	EA	2	*	*	*	*		
PAOZZ	5995-160-5954	PECIAL PURPOSE CABLE ASSEMBLY 3-9 IX1201U (80058) ACF,ACG,ACH ABLE ASSEMBLY, RADIO FREQUENCY W14 3-5	EA	2	*	*	*	*		W14
PAOZZ	5995-238-3414	G674M02 (80058) ACF,ACG,ACH ABLE ASSEMBLY, RADIO FREQUENCY NO-REF-DESIG 6	EA	1	*	*	*	*		
PAOZZ	5995-253-9671	T LG G389AU (80058) ACF,ACG,ACH ABLE ASSEMBLY, RADIO FREQUENCY NO-REF-DESIG 3	EA	1	*	*	*	*		
PAOZZ	5995-542-6243	T LG G350U (80058) ACF ABLE ASSEMBLY, RADIO FREQUENCY NO-REF-DESIG...	EA	1	*	*	*	*		
PAOZZ	5995-272-9111	7-11 G390U (80058) ACF,ACG,ACH ABLE ASSEMBLY, RADIO FREQUENCY NO-REF-DESIG...	EA	1	*	*	*	*		
PAOZZ	5995-272-9144	F CABLE ASSEMBLY NO. CG-557A/U 75 FT LG CD22840 (80063) ACF,ACG,ACH ABLE ASSEMBLY, RADIO FREQUENCY NO-REF-DESIG...	EA	2	*	*	*	*		
PAOZZ	5995-272-9138	F CABLE ASSEMBLY NO. CG-557A/U 900 FT LG CD22840 (80063) ACF,ACG,ACH ABLE ASSEMBLY, RADIO FREQUENCY W17 RF CABLE.	EA	1	*	*	*	*		W17
PAOZZ	5995-284-6679	SEMBLY CG558AU 30-3-4 IN LG CD22837 (80063) ACF,ACG,ACH ABLE ASSEMBLY, RADIO FREQUENCY NO-REF-DESIG...	EA	2	*	*	*	*		
PAOZZ	5995-162-7141	F CABLE ASSEMBLY 6 FT G562AU (80058) ACF,ACG,ACH ABLE ASSEMBLY, SPECIAL PURPOSE, ELECTRICAL	EA	4	*	*	*	*		
PAOZZ	5995-164-6494)-REF-DESIG 46 IN LG CD5386 (80063) ACF ABLE ASSEMBLY, SPECIAL PURPOSE, ELECTRICAL	EA	1	*	*	*	*		W7
PAOZZ	5995-161-4670	7 14 FT 5 IN LG CD27457 (80063) ACF,ACG,ACH ABLE ASSEMBLY, SPECIAL PURPOSE, ELECTRICAL	EA	2	*	*	*	*		
PAOZZ	5995-164-6598)-REF-DESIG 6 FT 4 IN LG K955TRA7 (80058) ACF ABLE ASSEMBLY, SPECIAL PURPOSE, ELECTRICAL	EA	1	*	*	*	*		
PAOZZ	5995-161-4673)-REF-DESIG 6 FT K956TRA7 (80058) ACF ABLE ASSEMBLY, SPECIAL PURPOSE, ELECTRICAL	EA	1	*	*	*	*		
PAOZZ	5995-163-1740)-REF-DESIG 6 FT K957TRA7 (80058) ACF ABLE ASSEMBLY, SPECIAL PURPOSE, ELECTRICAL	EA	1	*	*	*	*		
PAOZZ	5995-163-0035)-REF-DESIG 6 FT 4 IN LG K958TRA7 (80058) ACF ABLE ASSEMBLY, SPECIAL PURPOSE, ELECTRICAL	EA	1	*	*	*	*		
)-REF-DESIG 6 FT 4 IN LG K959TRA7 (80058) ACF,ACH								

FORM 1115

ORGANIZATIONAL REPAIR PARTS/TOOLS LIST

SECTION III

TM11-5820-202-20P

(1) LINE CODE	(2) FEDERAL STOCK NUMBER	(3) DESCRIPTION REFERENCE NUMBER & MFR CODE	(4) UNIT OF MEAS	(5) QTY. INC IN UNIT	(6) 15-DAY ORGANIZATIONAL MAINTENANCE ALLOW				(7) ILLUSTRATION	
					(a)	(b)	(c)	(d)	(a)	(b)
					1-5	6-20	21-50	51-100	PICTURE NO.	SYM NO.
PAOZZ	5995-163-1742	CABLE ASSEMBLY, SPECIAL PURPOSE, ELECTRI CAL.... W106 CORD CX961TRA7 4FT W/RED BAND SCC34600 (80063) ACF,ACG,ACH	EA	1	*	*	*	*		W106
PAOZZ	5995-163-1741	CABLE ASSEMBLY, SPECIAL PURPOSE, ELECTRI CAL.... NO-REF-DESIG CORD CX961TRA7 4 W/BLUE BAND SCC34600 (80063) ACF,ACG,ACH	EA	1	"	"	"	"		
PAOZZ	5995-752-2487	CABLE ASSEMBLY, SPECIAL PURPOSE, ELECTRI CAL.... W8 SPECIAL PURPOSE CORD ASSEMBLY NO. CX-1120/U 4 FT 6 IN LG SCD22489 (80063) ACF,ACG,ACH	EA	1	*	*	*	*		W8
PAOZZ	5995-237-8038	CABLE ASSEMBLY, SPECIAL PURPOSE, ELECTRI CAL.... W9 SPECIAL PURPOSE CABLE ASSEMBLY CX1150J SCDL22674 (80063) ACF,ACG,ACH	EA	1	"	"	"	"		W9
PAOZZ	5995-237-8037	CABLE ASSEMBLY, SPECIAL PURPOSE, ELECTRI CAL.... NO-REF-DESIG SPECIAL PURPOSE, CABLE ASSEMBLY CX1151U 15 FT LG SCD22834A (80063) ACF,ACG,ACH	EA	2	*	*	*	*		
PAOZZ	5995-170-7919	CABLE ASSEMBLY, SPECIAL PURPOSE, ELECTRI CAL.... W11 SPECIAL PURPOSE CABLE ASSEMBLY CX1152U 4 FT SCD22630 (80063) ACF,ACG,ACH	EA	1	"	"	"	"		W11
PAOZZ	5995-228-4334	CABLE ASSEMBLY, SPECIAL PURPOSE, ELECTRI CAL.... NO-REF-DESIG ELECTRICAL SPECIAL PURPOSE CABLE ASSEMBLY CX1850U 3 FT SCDL85089 (80063) ACF,ACG,ACH	EA	1	"	"	"	"		
PAOZZ	5995-295-8175	CABLE ASSEMBLY, SPECIAL PURPOSE, ELECTRI CAL.... NO-REF-DESIG SPECIAL CABLE ASSEMBLY CX1851U (80058) ACF,ACG,ACH	EA	2	*	*	*	*		
PAOZZ	5995-256-9968	CABLE ASSEMBLY, POWER, ELECTRICAL W5 CABLE.. ASSEMBLY SPECIAL PURPOSE ELECTRICAL CX1939U 5- 3-7-8 SCC68578 (80063) ACF,ACG,ACH	EA	2	*	*	*	*		W5
PAOHD	7110-408-0217	CHAIR NO-REF-DESIG W/D ARMS 1052CB (79506) ACF,ACG,ACH	EA	2	*	*	*	*		
PAOHD	7105-141-5546	CHAIR NO-REF-DESIG W/D ARMS 674 (02860) ACF,ACG,ACH	EA	1	*	*	*	*		
PAOZZ	5925-930-558	CIRCUIT BREAKER NO-REF-DESIG AIR, OPST 20 AMP 120/240 V AC 60 CYC C660046 (14933) ACF	EA	1	*	*	*	*	3	
PAOZZ	5935-259-9828	CLAMP, ELECTRICAL NO-REF-DESIG..... AN3057-6 (80059) ACF,ACG,ACH	EA	23	"	"	"	"		
PAOZZ	5935-688-4026	CLAMP, ELECTRICAL NO-REF-DESIG..... AN3057-8 (80059) ACF,ACG,ACH	EA	2	*	*	*	*		
PAOZZ	5935-223-0572	CLAMP, ELECTRICAL NO-REF-DESIG..... AN3057-12 (80059) ACF,ACG,ACH	EA	2	*	*	*	*		
PAOZZ	5940-295-6041	CLIP, ELECTRICAL NO-REF-DESIG FERRULE TYPE ... 128003 (75915) ACF,ACG,ACH	EA	2	*	*	*	*		
PAOZZ	5920+258-2471	CLIP, ELECTRICAL NO-REF-DESIG FERRULE TYPE ... 128009 (75915) ACF,ACG,ACH	EA	1	"	"	"	"		
PAOZZ	9520-281-5918	CLIPBOARD NO-REF-DESIG 12-1/2 IN LG X 9 IN W ... CT112 (94297) ACF,ACG,ACH	EA	1	*	*	*	*		
PAOZZ	5935-196-4689	CONNECTOR, ADAPTER NO-REF-DESIG..... M359 (80063) ACF	EA	5	*	*	*	*		
PAOZZ	5935-196-4689	CONNECTOR, ADAPTER NO-REF-DESIG..... M359 (80063) ACF,ACG,ACH	EA	1	*	*	*	*		
PAOZZ	5935-295-5449	CONNECTOR, ADAPTER NO-REF-DESIG..... PL258 (80063) ACF,ACG,ACH	EA	2	*	*	*	*		
PAOZZ	4020-408-4219	CORD NO-REF-DESIG..... FC5718 (81349) ACF,ACG,ACH	FT	50	*	*	*	*		
PAOZZ	5815-404-8438	COVER NO-REF-DESIG..... BG198 (80058) ACF,ACG,ACH	EA	2	*	*	*	*		
PAOZZ	5815-498-7933	COVER NO-REF-DESIG..... BS199 (80058) ACF,ACG,ACH	EA	1	"	"	"	"		
PAOZZ	5815-498-7958	COVER, TELETYPEWRITER REPERFORATOR TRANSMITTER.. NO-REF-DESIG BG200 (80058) ACF,ACG,ACH	EA	1	*	*	*	*		
PAOZZ	5970-285-0123	INSULATOR, BOWL NO-REF-DESIG STEATITE, 2-23-32 IN LG X 5-1-4 IN DIA A9232 (73428) ACF,ACG,ACH	EA	1	*	*	*	*		
PAOZZ	5970-405-8971	INSULATOR, SPREADER NO-REF-DESIG STEATITE..... GRADE L-4, BROWN GLAZED 4 IN LG X 3-4 IN DIA L422 (81349) ACF,ACG,ACH	EA	6	"	"	"	"		
PAOHD	5805-171-3370	KEY, TELEGRAPH NO-REF-DESIG..... J45 (80063) ACF,ACG,ACH	EA	1	*	*	*	*		
PAOZZ	6240-267-2860	LAMP, INCANDESCENT NO-REF-DESIG LAMP, 125 V 15 W INTERMEDIATE SCREW BASE 157N125 (03538) ACF,ACG,ACH	EA	1	*	*	*	*		
PAOZZ	6240-155-8634	LAMP, INCANDESCENT 12 LAMP, 120 V, 50 W MED SCREW BASE 50ARS (08108) ACF,ACG,ACH	EA	1	"	"	"	"		12

IC FORM 11

ORGANIZATIONAL REPAIR PARTS/TOOLS LIST

SECTION III

TM 11-5820-202-20P

(1) SMR CODE	(2) FEDERAL STOCK NUMBER	(3) DESCRIPTION REFERENCE NUMBER & MFR CODE	(4) UNIT OF MEAS	(5) QTY. INC IN UNIT	(6) 15-DAY ORGANIZATIONAL MAINTENANCE ALU				(7) ILLUSTRATION	
					(a) 1-5	(b) 6-20	(c) 21-50	(d) 51-100	(a) FIGURE NO.	(b) ITEM NO.
PAOHD	5820-199-8842	MAST SECTION NO-REF-DESIG..... MS49 (80058) ACF,ACG,ACH	EA	1	*	*	*	*		
PAOHD	5820-155-8131	MAST SECTION NO-REF-DESIG..... MS50 (80058) ACF,ACG,ACH	EA	1	*	*	*	*		
PAOHD	5820-155-8130	MAST SECTION NO-REF-DESIG..... MS51 (80058) ACF,ACG,ACH	EA	1	*	*	*	*		
PAOHD	5820-155-8129	MAST SECTION NO-REF-DESIG..... MS52 (80058) ACF,ACG,ACH	EA	1	*	*	*	*		
PAOHD	5820-156-1055	MAST SECTION NO-REF-DESIG..... MS53 (80058) ACF,ACG,ACH	EA	1	*	*	*	*		
PAOZZ	5985-199-8831	MAST SECTION NO-REF-DESIG..... MS116 (80058) ACF,ACG,ACH	EA	4	*	*	*	*		
PAOZZ	5820-199-8843	MAST SECTION NO-REF-DESIG..... MS117 (80058) ACF,ACG,ACH	EA	2	*	*	*	*		
PAOZZ	5985-238-7474	MAST SECTION NO-REF-DESIG..... MS118 (80058) ACF,ACG,ACH	EA	2	*	*	*	*		
PAOZZ	5820-392-9654	PAD, SILENCING NO-REF-DESIG FELT PAD 17-1-4.. IN X 17-1-8 IN X 1-2 IN 8537 (70367) ACF,ACG,ACH	EA	2	*	*	*	*		
PAOZZ	5820-237-8438	RACK NO-REF-DESIG..... SCC27979 (80063) ACF,ACG,ACH	EA	2	*	*	*	*		
PAOZZ	5975-187-5295	ROD, GROUND NO-REF-DESIG..... GP26 (80058) ACF,ACG,ACH	EA	1	*	*	*	*		
PAOZZ	5940-266-2034	SPLICE, CONDUCTOR NO-REF-DESIG COMPRESSION .. ACCOM 1 CONTINUOUS AND 1 BRANCH MAX NO. 10AWG KS90 (09922) ACF,ACG,ACH	EA	6	*	*	*	*		
PAOZZ	5820-497-8792	STRAP, RETAINING NO-REF-DESIG BROOM AND HAMMER RETAINING STRA: SCB27964 (80063) ACF,ACG,ACH	EA	2	*	*	*	*		
PAOZZ	5410-408-4347	STRAP, RETAINING NO-REF-DESIG HOLDS FOLDING... CHAIR SCC19825GR1 (80063) ACF,ACG,ACH	EA	2	*	*	*	*		
PAOZZ	5815-219-6401	STRAP, RETAINING NO-REF-DESIG HOLD GND ROD IN. STORAGE POSITION B AND W 26512 (99777) ACF,ACG,ACH	EA	1	*	*	*	*		
PAOZZ	5340-498-9541	STRAP, RETAINING NO-REF-DESIG HOLD LANCE..... POLES SCC27982GR2 (80063) ACF,ACG,ACH	EA	4	*	*	*	*		
PAOZZ	5940-497-8791	STRAP, RETAINING NO-REF-DESIG MAST RETAINING.. STRAP B AND W 251 (99777) ACF,ACG,ACH	EA	3	*	*	*	*		
PAOZZ	6145-128-8695	WIRE NO-REF-DESIG BARE WIRE 14AWGW1 (81349) ACF,ACG,ACH	FT	1000	*	*	*	*		
PAOZZ	6145-160-5114	WIRE NO-REF-DESIG 1 COND..... 14AWGW128 (81349) ACF,ACG,ACH	FT	2	*	*	*	*		
PAOZZ	6145-226-8812	WIRE NO-REF-DESIG WIRE, ELECTRICAL WDLTT ON 1- 2 MILE REEL WDLTT (80058) ACF,ACG,ACH	EA	2	*	*	*	*		
PAOZZ	5815-356-3903	GROUP 0002 RADIO TELETYPEWRITER CONTROL C-808/GRC-26A CASE, RADIO TELETYPEWRITER CONTROL NO-REF-DESIG CY901GRC264 (80058) E,C,BMD,BME	EA	1	*	*	*	*		
PAOZZ	5960-262-0218	ELECTRON TUBE NO-REF-DESIG..... 5Y3MGY (81350) BMC,BMD,BME	EA	2	*	*	*	*		
PAOZZ	5920-284-4153	FUSE, CARTRIDGE F1 LAMP 413001 (75915) BMC,BMD,BME	EA	1	*	*	*	*		F1
PAOZZ	5355-160-6851	KNOB NO-REF-DESIG BAR W/CIR MUR MRP (42498) BMC,BMD,BME	EA	2	*	*	*	*		
PAOZZ	5355-160-6132	KNOB NO-REF-DESIG RD K868236-1 (23921) BMC,BMD,BME	EA	2	*	*	*	*		
PAOZZ	6240-155-8706	LAMP NO-REF-DESIG..... L452-47 (24446) BMC,BMD,BME	EA	2	*	*	*	*		
PAOZZ	6210-243-0073	LENS, INDICATOR LIGHT NO-REF-DESIG GREEN' 93246-112 (72619) BMC,BMD,BME	EA	1	*	*	*	*		
PAOZZ	6210-299-3870	LENS, INDICATOR LIGHT NO-REF-DESIG AMBER DPH (72619) BMC,BMD,BME	EA	1	*	*	*	*		
PAOZZ	6210-404-9871	LENS, INDICATOR LIGHT NO-REF-DESIG RED 93-111 (72619) BMC,BMD,BME	EA	1	*	*	*	*		
PAOZZ	5945-754-5798	RELAY ARMATURE O1..... 72J02160TGTC (78277) BMC,BMD,BME	EA	1	*	*	*	*		C1
PAOZZ	5305-206-3392	THUMBSCREW NO-REF-DESIG FRONT PANEL FASTENER .. 738606 (26916) BMC,BMD,BME	EA	4	*	*	*	*		

SECTION V

TM11-5820-202-20P

INDEX - FEDERAL STOCK NUMBER AND REFERENCE NUMBER
CROSS-REFERENCE TO ITEM NUMBER

STOCK NUMBER	FIGURE NO.	ITEM NO.	STOCK NUMBER	FIGURE NO.	ITEM NO.
4020-466-4219			5995-161-4670		
5305-206-3392			5995-161-4673		
5346-458-9541			5995-162-7141		
5355-160-6132			5995-163-0035		
5355-160-6851			5995-163-1740		
5410-408-4347			5995-163-1741		
5805-171-3370			5995-163-1742		
5805-356-3548			5995-164-6494		W106
5815-219-8401			5995-164-6598		W7
5815-212-8403			5995-164-7692		W1
5815-404-8438			5995-166-7902		W108
5815-498-7933			5995-170-7919		W11
5815-498-7959			5995-170-7929		W3
5820-155-8129			5995-170-7943		W2
5820-155-8130			5995-170-8773		
5820-155-8131			5995-170-8780		
5820-156-1055			5995-228-4334		
5820-199-8842			5995-237-8037		
5820-199-8843			5995-237-8038		W9
5820-237-8438			5995-238-3414		
5820-392-9654			5995-253-9671		
5820-404-2718			5995-256-9968		W5
5820-497-8596			5995-272-9111		
5820-497-8705			5999-272-9138		W17
5820-497-8792			5995-272-9144		
5920-258-2471			5995-284-6679		
5920-284-4153			5995-295-8175		
5925-930-5559	3	F1	5995-542-6243		
5935-196-4689			5995-752-2487		W8
5935-223-0562			6145-128-8695		
5935-259-9828			6145-160-5114		
5935-295-5449			6145-226-8812		
5935-688-4026			6145-241-1770		
5940-266-2034			6145-542-6809		
5940-295-6041			6210-243-0073		
5945-754-5798			6218-299-3870		
5960-262-0218			6210-404-9871		
5970-285-0123			6240-155-8634		12
5970-405-8971			6240-155-8706		
5975-187-5295			6240-267-2860		
5985-199-8831			7105-141-5546		
5985-238-7474			7110-408-0217		
5985-497-8791			7520-281-5918		
5995-160-5954		W14	7920-291-5812		

REFERENCE NO.	MFR CODE	FIG. NO.	ITEM NO.	REFERENCE NO.	MFR CODE	FIG. NO.	ITEM NO.
AN3057-12	80059			GP26	80058		
AN3057-6	80059			HRP	42498		
AN3057-8	80059			J45	80063		
A9232	73428			KS90	09922		
8G198	80058			K848236-1	23921		
8G199	80058			LMS2-47	24446		
9G200	80058			L422	81349		
CD763	80058		W1	MP50	99176		
CG389AU	80058			MP50A	99176		
CG390U	80058			MS116	80058		
CG562AU	80058			MS117	80058		
CG67AMQ2	80058		W14	MS118	80058		
CT112	94297			MS49	80058		
CX1165U	80058		W2	MS50	80058		
CX1166U	80058		W3	MS51	80058		
CX1200U	80058			MS52	80058		
CX1201U	80058			MS53	80058		
CX1851U	80058			MT657GRC	80058		
CX955TRA7	80058			M359	80063		
CX956TRA7	80058			PL258	80063		
CX957TRA7	80058			SCB27964	80063		
CX958TRA7	80058			SCC19825GR1	80063		
CX959TRA7	80058			SCC27979	80063		
CY901CRC264	80058			SCC27982GR2	80063		
C660046	14933	3		SCC28023	80063		
DPH	72619			SCC34600	80063		
FC571A	81349			SCC34600	80063		W106

SECTION V

TM11-5820-202-20P

REFERENCE NO.	MFR CODE	FIG. NO.	ITEM NO.	REFERENCE NO.	MFR CODE	FIG. NO.	ITEM NO.
SCC34601	80063		W108	14A8GW1	81349		
SCC68578	80063		W5	14A8GW128	81349		
SCDL2267A	80063		W9	15T7N125	03538		
SCDL85089	80063			251	99777		
SCD22489	80063		W8	26512	99777		
SCD22630	80063		W11	413001	75915		F1
SCD22834A	80063			42124	89208		
SCD22837	80063		W17.	5Y3MGT	81350		
SCD22840	80063			50ARS	08108		12
SCD27457	80063		W7	5049	70903		
SCD5386	80063			574	02860		
WD1TY	80058			72J0Z160TGTC	78277		01
1052CB	79506			738606	26916		
1230	92194			8537	70367		
128003	75915			93-111	72619		
128009	75915			93246-112	72619		

By Order of the Secretary of the Army:

CREIGHTON W. ABRAMS
General, United States Army
Chief of Staff

Official:

VERNE L. BOWERS
Major General, United States Army
The Adjutant General

Distribution:

To be distributed in accordance with DA Form 12-51 (qty rqr block no. 98) Organizational Maintenance requirements for AN/GRC-26.

U.S. GOVERNMENT PRINTING OFFICE: 1973-765109/81
029-001

END

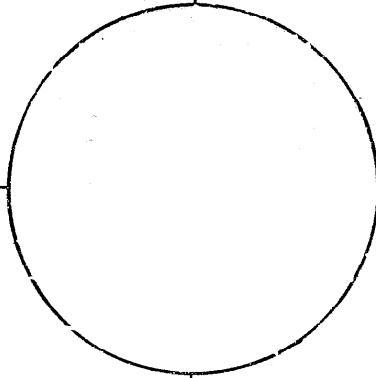
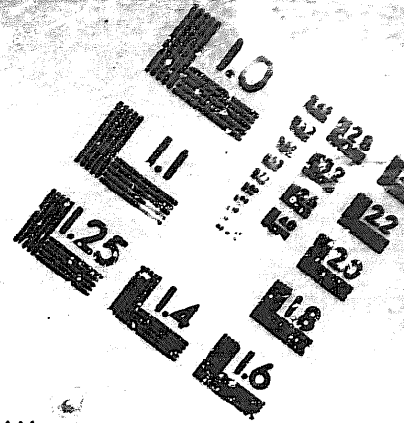
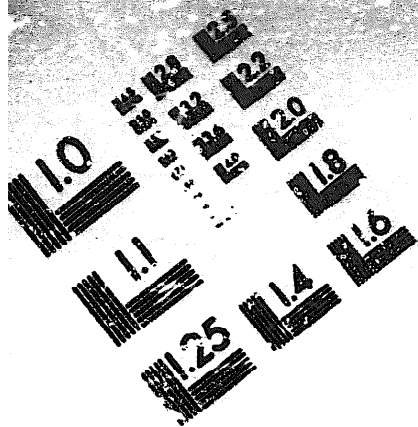
7-25-83

DATE





DEPARTMENT OF THE ARMY
MICROFORM
TEST TARGET



150 MM

1.0 mm (e= .81 mm)

ABCDEFGHIJKLMN OPQRSTUVWXYZ 1234567890
abcdefghijklmnopqrstuvwxyz \$%&'()*+,-./:;=<=>?@*~

1.5 mm (e= 1.09 mm)

ABCDEFGHIJKLMN OPQRSTUVWXYZ 1234567890
abcdefghijklmnopqrstuvwxyz \$%&'()*+,-./:;=<=>?@*~

2.0 mm (e= 1.37 mm)

ABCDEFGHIJKLMN OPQRSTUVWXYZ
abcdefghijklmnopqrstuvwxyz
1234567890 \$%&'()*+,-./:;=<=>?@*~

2.5 mm (e= 1.77 mm)

ABCDEFGHIJKLMN OPQRSTUVWXYZ
abcdefghijklmnopqrstuvwxyz
1234567890 \$%&'()*+,-./:;=<=>?@*~

1.0 mm (e= .81 mm)

ABCDEFGHIJKLMN OPQRSTUVWXYZ 1234567890
abcdefghijklmnopqrstuvwxyz \$%&'()*+,-./:;=<=>?@*~

1.5 mm (e= 1.09 mm)

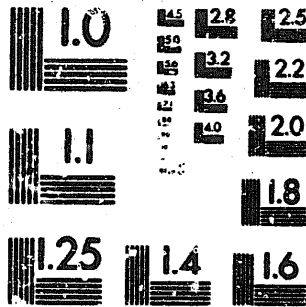
ABCDEFGHIJKLMN OPQRSTUVWXYZ 1234567890
abcdefghijklmnopqrstuvwxyz \$%&'()*+,-./:;=<=>?@*~

2.0 mm (e= 1.37 mm)

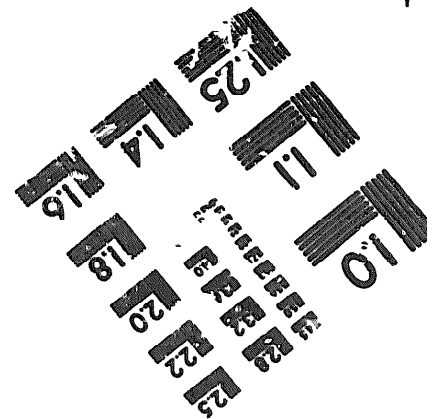
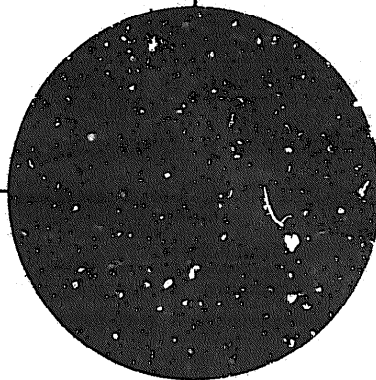
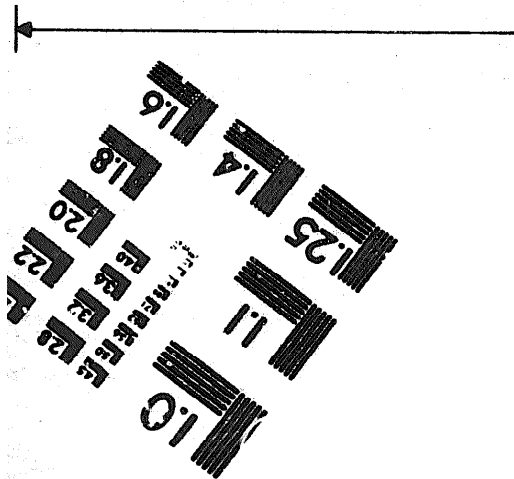
ABCDEFGHIJKLMN OPQRSTUVWXYZ
abcdefghijklmnopqrstuvwxyz
1234567890 \$%&'()*+,-./:;=<=>?@*~

2.5 mm (e= 1.77 mm)

ABCDEFGHIJKLMN OPQRSTUVWXYZ
abcdefghijklmnopqrstuvwxyz
1234567890 \$%&'()*+,-./:;=<=>?@*~



200 MM



250 MM